

Converting Colors

HunterLab(65.1408, 6.7992,
6.9829)

Have a look what the booklet for
HunterLab(65.1408, 6.7992, 6.9829)
contains.

HunterLab(65.1408, 6.7992, 6.9829)	3
<i>Conversions</i>	4
<i>Details</i>	6
<i>Harmonies</i>	12
<i>Previews</i>	24
<i>Color Blindness Simulation</i>	28
<i>CSS Examples</i>	31

Color

**HunterLab(65.1408, 6.7992,
6.9829)**

Conversions

Conversions Part 1

Format	Color
Hex	C6A7A7
RGB	198, 167, 167
RGB Percent	78%, 65%, 65%
CMY	0.2235, 0.3451, 0.3451
CMYK	0.00, 0.16, 0.16, 0.22
HSL	0°, 21%, 72%
HSV	0°, 16%, 78%
XYZ	44.0825, 42.4332, 42.4263
YIQ	176.2690, 18.4760, 6.5720

Conversions

Conversions Part 2

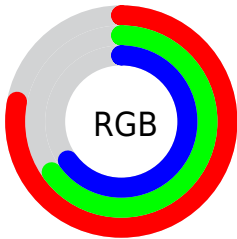
Format	Color
RYB	198, 167, 167
Decimal	13019047
CIELab	71.17, 11.30, 4.21
CIELCh	71, 12.062, 20.442
Yxy	42.4351, 0.3419, 0.3291
Android (android.graphics.Color)	4291209127 (0xFFC6A7A7)
YUV	176.2690, -4.5696, 19.0581
Hunter-Lab	65.1408, 6.7992, 6.9829

Details

The HunterLab color $65.1408, 6.7992, 6.9829$ is a light color, and the websafe version is hex $CC9999$. A complement of this color would be $72.5808, -13.0925, 0.8516$, and the grayscale version is $66.0165, -3.5225, 3.5868$.

A 20% lighter version of the original color is $88.7561, 6.6654, 8.6434$, and $44.0778, 6.8003, 5.4622$ is the 20% darker color. If you saturate the color by 10%, you get $59.2036, 14.0913, 9.0007$, and if you desaturate by 10%, it is $71.4438, -0.1889, 5.0966$.

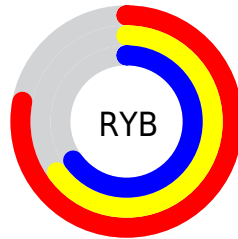
Distribution



Red (78%)

Green (65%)

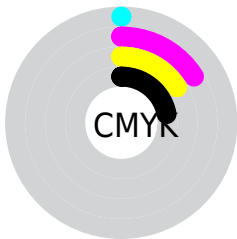
Blue (65%)



Red (78%)

Yellow (65%)

Blue (65%)

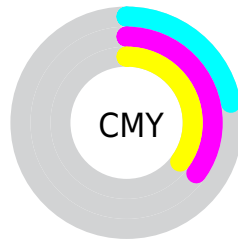


Cyan (0%)

Magenta (16%)

Yellow (16%)

Black (22%)



Cyan (22%)


Magenta (35%)


Yellow (35%)

Brightness & Saturation Gradients


These gradients show how the HunterLab color 65.1408, 6.7992, 6.9829 changes by changing the brightness by 10 percent. The first figure shows a shift by +10% for each color and the second figure -10%.


Similar to the brightness gradients but the following saturation gradients show a change of the HunterLab color 65.1408, 6.7992, 6.9829 by changing the saturation by 10% instead.


 65.1408, 6.7992,
6.9829


 65.1408, 6.7992,
6.9829


188.7548, 4.3485,
15.2467

 54.2606, 6.8083,
6.1766


 88.8019, 6.5883,
8.6661

 44.0631, 6.7476,
5.3912

 101.5166, 6.4016,
9.5408

 34.5990, 6.6051,
4.6265


114.7862, 6.1656,
10.4379

 25.9305, 6.3670,
3.8804

128.5882, 5.8836,
11.3569

 18.1384, 6.0141,
3.1481

142.9031, 5.5587,
12.2976

 11.3356, 5.5173,
2.4191

157.7129, 5.1931,

 3.5988, 13.4926,

13.2597

2.5192

173.0016, 4.7891,
14.2429

0.0000, NaN, NaN

0.0000, NaN, NaN

■ 65.1408, 6.7992,
6.9829

■ 65.1408, 6.7992,
6.9829

■ 59.2036, 14.0913,
9.0007

■ 71.4438, -0.1889,
5.0966

■ 53.6967, 21.6746,
11.1453

■ 78.0536, -6.8841,
3.3289

■ 48.7067, 29.4570,
13.3937

■ 84.9285, -13.3208,
1.6669

■ 44.3352, 37.2254,
15.6817

■ 92.0342, -19.5351,
0.0960

■ 40.6932, 44.5915,

■ 95.2606, -22.2377,

17.8873

-0.5738

■ 37.8850, 50.9852,
19.8268

■ 35.9753, 55.7707,
21.2919

■ 34.9455, 58.5226,
22.1388

■ 34.6502, 59.3358,
22.3901

Harmonies

Analogous

The Analogous color harmony consists of three colors that are next to each other on the color wheel.



65.1423, 7.3524, 1.8422



65.1408, 6.7992, 6.9829



65.1423, 3.4387, 10.8791

Triad

The Triadic color harmony groups three colors that are evenly spaced from another and form a triangle on the color wheel.



65.1423, 6.7971, 6.9840



65.1423, -11.4840, 9.6701



65.1423, -5.2372, -7.2497

Complementary

The Complementary color scheme is a pair of colors which are on the opposite of each other on the color wheel.



65.1408, 6.7992, 6.9829



72.5808, -13.0925, 0.8516

Split Complementary

Split-complementary colors differ from the complementary color scheme. The scheme consists of three colors, the original color and two neighbors of the complement color.



65.1423, -10.1202, -4.7534



65.1408, 6.7992, 6.9829



65.1423, -13.6465, 5.2048

Square

The Square scheme is like the rectangle color scheme, but the four colors are evenly spaced on the color wheel.



65.1423, 6.7971, 6.9840



65.1423, -7.1552, 12.3377



65.1423, -13.1558, -0.0905



65.1423, 0.2800, -6.6729

Rectangle

The Rectangle color scheme consists of four colors that form a rectangle on the color wheel.



65.1408, 6.7992, 6.9829



65.1423, 0.1222, 12.3834



65.1423, -13.1558, -0.0905



65.1423, -7.0042, -6.7348

Sweetspot

The Sweet Spot groups the original color and five complimentary colors.



65.1423, 6.7971, 6.9840



95.5719, -0.7794, 6.6413



66.1219, 11.9785, -6.9526



43.9318, -0.0607, 3.1526

0.0000, NaN, NaN



46.2646, -2.4686, 2.5136

Same Dimension

The Same Dimension uses a secret algorithm to generate beautiful new colors.



65.1423, 6.7971, 6.9840



83.7578, 12.5200, 10.2473



69.6113, -1.0577, 11.7366



32.6146, 1.1243, 2.7326



27.9429, 47.8493, 18.0560



6.0810, 10.4101, 3.9293

Inverse Universe

The Inverse Universe completely reimagines the original color for something new.



72.5808, -13.0925, 0.8516



95.8838, -19.9559, 0.2329



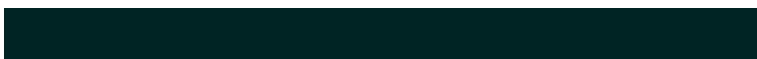
67.7896, -5.5107, -5.0525



34.7381, -4.5429, 0.9855



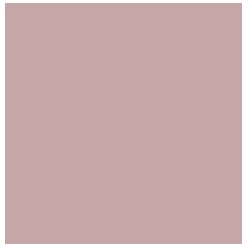
53.7683, -28.5012, -5.6797



11.7003, -6.2022, -1.2355

Previews

White Background



This preview shows how the HunterLab color 65.1408, 6.7992, 6.9829 looks on a white background.

Color Contrast Check

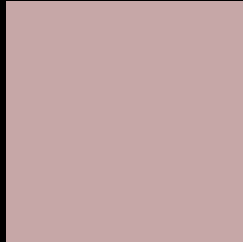
Large Text (above 18pt) WCAG AA × Fail

Any Text WCAG AA × Fail

Large Text (above 18pt) WCAG AAA × Fail

Any Text WCAG AAA × Fail

Black Background



This preview shows how the HunterLab color 65.1408, 6.7992, 6.9829 looks on a black background.

Color Contrast Check

Large Text (above 18pt) WCAG AA ✓ Pass

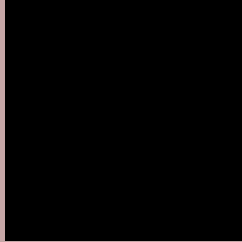
Any Text WCAG AA ✓ Pass

Large Text (above 18pt) WCAG AAA ✓ Pass

Any Text WCAG AAA ✓ Pass

If you want to check with other color combinations, try the [Color Contrast Checker](#).

HunterLab 65.1408, 6.7992, 6.9829 Background



This preview shows how black text looks on a background with the HunterLab color 65.1408, 6.7992, 6.9829.



This preview shows how white text looks on a background with the HunterLab color 65.1408, 6.7992,

6.9829.

Color Blindness Simulation

Color vision deficiency is a very complex topic, and I could not describe the different causes any better than Wikipedia does, so if you want to learn more, you should check out their [article about color blindness](#).

Dichromacy



Original Color

65.1408, 6.7992, 6.9829

Protanopia

65.3279, -2.7152, 5.2401

Deuteranopia

65.2957, 4.4063, 7.1154



Tritanopia

65.0129, 9.9013, 1.8221

Trichromacy



Original Color

65.1408, 6.7992, 6.9829

Protanomaly

65.0710, 0.8615, 5.4600

Deuteranomaly

65.1133, 5.2560, 6.9249

Tritanomaly

65.1694, 8.7418, 3.8784

Monochromacy



Original Color

65.1408, 6.7992, 6.9829

Achromatopsia

65.8903, -3.5157, 3.5799

Achromatomaly

65.6465, 0.0107, 4.7442

CSS Examples

Text

The CSS property to change the color of the text to HunterLab 65.1408, 6.7992, 6.9829 is called "color". The color property can be set on classes, ids or directly on the HTML element.

This example shows how text in the color `rgb(198, 167, 167)` looks like.

```
.text, #text, p{  
    color:rgb(198, 167, 167)  
}
```

If you want to add a text shadow in that color use the text-shadow property, you can generate a text shadow directly with our [CSS Text Shadow Generator](#).

Here you see how black text with a 4 pixel rgb(198, 167, 167) colored shadow looks like.

```
.shadow{ text-shadow: 4px 4px 2px rgb(198, 167, 167) }
```

Border

The CSS property to change the border of an element to HunterLab 65.1408, 6.7992, 6.9829 is called "border". The border property can be set on classes, ids or directly on the HTML element.

This example shows the color as border, it can be applied via the CSS property "border" or "border-color".

```
.border, #border, table{ border:4px solid rgb(198, 167, 167) }
```


If only the border color should be changed use the property border-color.

```
.border{ border-color:rgb(198, 167, 167) }
```

If you want to add a box shadow in that color use:

Here you see how a box with a 4 pixel rgb(198, 167, 167) colored shadow looks like.

```
.boxshadow{ -moz-box-shadow:4px 4px 4px  
4px rgb(198, 167, 167); -webkit-box-  
shadow:4px 4px 4px 4px rgb(198, 167, 167);  
box-shadow:4px 4px 4px 4px rgb(198, 167,  
167) }
```

Background

The CSS property to change the background color of an element to HunterLab 65.1408, 6.7992, 6.9829 is called "background". The background property can be set on classes, ids or directly on the HTML element.

```
.background, #background, body{  
background: rgb(198, 167, 167) }
```

If only the background color should be changed can be used:

```
.background{ background-color: rgb(198,  
167, 167) }
```

This example shows the color as background, it is applied via the CSS property "background".

To optimize and compress your CSS code, you can use our [online CSS compressor and optimizer](#) based on csstidy. If you want to create a linear or radial gradient as background or border, check our [CSS Gradient Generator](#).

Hey! You found this booklet interesting? Support Converting Colors with the new Membership Option!

The pro membership hides all ads, plus gives you double the colors in the color bucket, and more awesome pro features!

[Learn more, Memberships starting at \\$2.50/m!](#)

**Follow me
on Twitter!**

@ConvertingColor