

Converting Colors

HunterLab(65.2415, 4.2872,
-0.1809)

Have a look what the booklet for
HunterLab(65.2415, 4.2872, -0.1809)
contains.

HunterLab(65.3388, 3.9809, 0.1723)	3
<i>Conversions</i>	4
<i>Details</i>	6
<i>Harmonies</i>	12
<i>Previews</i>	24
<i>Color Blindness Simulation</i>	28
<i>CSS Examples</i>	31

Color

**HunterLab(65.3388, 3.9809,
0.1723)**

Conversions

Conversions Part 1

Format	Color
Hex	BBAAB6
RGB	187, 170, 182
RGB Percent	73%, 67%, 71%
CMY	0.2667, 0.3333, 0.2863
CMYK	0.00, 0.09, 0.03, 0.27
HSL	318°, 11%, 70%
HSV	318°, 9%, 73%
XYZ	43.3117, 42.6916, 50.2134
YIQ	176.4510, 6.2800, 7.3360

Conversions

Conversions Part 2

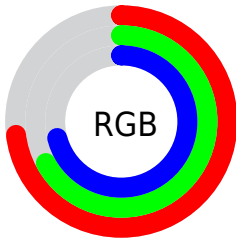
Format	Color
R_{YB}	187, 170, 182
Decimal	12298934
CIE Lab	71.35, 8.27, -3.92
CIE LCh	71, 9.156, 334.628
Yxy	42.6934, 0.3180, 0.3134
Android (android.graphics.Color)	4290489014 (0xFFBBAAB6)
YUV	176.4510, 2.7357, 9.2515
Hunter-Lab	65.3388, 3.9809, 0.1723

Details

The HunterLab color $65.3388, 3.9809, 0.1723$ is a light color, and the websafe version is hex 999999 . A complement of this color would be $68.6898, -10.8375, 7.1273$, and the grayscale version is $66.0664, -3.5251, 3.5895$.

A 20% lighter version of the original color is $88.9259, 3.5978, 0.9272$, and $44.2834, 4.2192, -0.4459$ is the 20% darker color. If you saturate the color by 10%, you get $59.9588, 12.6517, -3.7052$, and if you desaturate by 10%, it is $71.0229, -4.5291, 4.2019$.

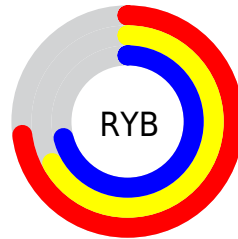
Distribution



Red (73%)

Green (67%)

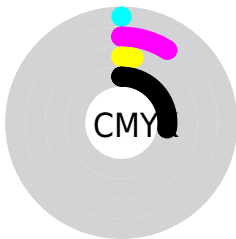
Blue (71%)



Red (73%)

Yellow (67%)

Blue (71%)

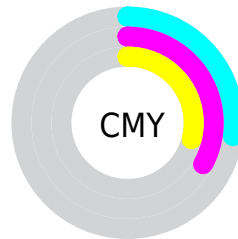


Cyan (0%)

Magenta (9%)

Yellow (3%)

Black (27%)



Cyan (27%)

Magenta (33%)

Yellow (29%)

Brightness & Saturation Gradients

These gradients show how the HunterLab color 65.3388, 3.9809, 0.1723 changes by changing the brightness by 10 percent. The first figure shows a shift by +10% for each color and the second figure -10%.

Similar to the brightness gradients but the following saturation gradients show a change of the HunterLab color 65.3388, 3.9809, 0.1723 by changing the saturation by 10% instead.

■ 65.3388, 3.9809,
0.1723

■ 65.3388, 3.9809,
0.1723

189.0369, 0.4288,
5.5319

■ 54.4469, 4.1403,
-0.2306

■ 89.0214, 3.4918,
1.1131

■ 44.2369, 4.2383,
-0.5856

101.7461, 3.1747,
1.6428

■ 34.7594, 4.2648,
-0.8865

115.0252, 2.8133,
2.2091

■ 26.0762, 4.2083,
-1.1262

128.8365, 2.4105,
2.8103

■ 18.2678, 4.0522,
-1.2952

143.1602, 1.9687,
3.4445

■ 11.4463, 3.7710,
-1.3792

157.9786, 1.4900,

■ 3.8608, 9.1307,

4.1104

-4.0020

173.2757, 0.9761,
4.8066

0.0000, NaN, NaN

0.0000, NaN, NaN

■ 65.3388, 3.9809,
0.1723

■ 65.3388, 3.9809,
0.1723

■ 59.9588, 12.6517,
-3.7052

■ 71.0229, -4.5291,
4.2019

■ 54.9291, 21.4391,
-7.3639

■ 76.9657, -12.8600,
8.3339

■ 50.3117, 30.2309,
-10.6991

■ 83.1355, -21.0200,
12.5398

■ 46.1780, 38.8220,
-13.5647

■ 89.5051, -29.0248,
16.8002

■ 42.6065, 46.8803,

■ 93.1201, -32.9473,

-15.7699

18.1866

■ 39.6750, 53.9389,
-17.0958

■ 93.2693, -32.0858,
16.0388

■ 37.4445, 59.4550,
-17.3442

■ 93.4234, -31.1978,
13.8248

■ 35.9365, 62.9671,
-16.4190

■ 93.5823, -30.2833,
11.5446

■ 35.0447, 64.5360,
-14.5069

■ 93.7461, -29.3424,
9.1982

Harmonies

Analogous

The Analogous color harmony consists of three colors that are next to each other on the color wheel.



65.3402, 1.1695, -3.0959



65.3388, 3.9809, 0.1723



65.3402, 4.7682, 4.1743

Triad

The Triadic color harmony groups three colors that are evenly spaced from another and form a triangle on the color wheel.



65.3402, 3.9792, 0.1734



65.3402, -4.1411, 10.7696



65.3402, -10.0124, -0.9678

Complementary

The Complementary color scheme is a pair of colors which are on the opposite of each other on the color wheel.



65.3388, 3.9809, 0.1723



68.6898, -10.8375, 7.1273

Split Complementary

Split-complementary colors differ from the complementary color scheme. The scheme consists of three colors, the original color and two neighbors of the complement color.



65.3402, -11.3572, 2.9329



65.3388, 3.9809, 0.1723



65.3402, -8.0223, 9.5758

Square

The Square scheme is like the rectangle color scheme, but the four colors are evenly spaced on the color wheel.



65.3402, 3.9792, 0.1734



65.3402, 0.0118, 10.1331



65.3402, -10.6379, 6.7681



65.3402, -6.9193, -3.7835

Rectangle

The Rectangle color scheme consists of four colors that form a rectangle on the color wheel.



65.3388, 3.9809, 0.1723



65.3402, 4.0256, 6.6821



65.3402, -10.6379, 6.7681



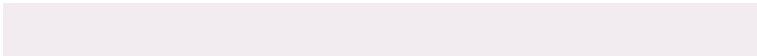
65.3402, -10.6803, 0.2687

Sweetspot

The Sweet Spot groups the original color and five complimentary colors.



65.3402, 3.9792, 0.1734



91.9924, -1.5810, 3.4692



64.3678, 1.0105, -3.6246



42.8797, -0.3099, 1.4228



97.7295, -5.2146, 5.3098



44.2712, -2.3622, 2.4053

Same Dimension

The Same Dimension uses a secret algorithm to generate beautiful new colors.



65.3402, 3.9792, 0.1734



85.9034, 7.7326, -0.8712



65.0844, 2.6043, 3.8166



31.0598, 2.0063, 0.0317



29.0517, 53.7472, -12.1988



5.8440, 10.9729, -3.7033

Inverse Universe

The Inverse Universe completely reimagines the original color for something new.



65.3402, 3.9792, 0.1734



85.9034, 7.7326, -0.8712



68.9346, -9.4735, 3.6299



31.0598, 2.0063, 0.0317



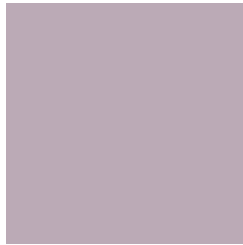
29.0517, 53.7472, -12.1988



5.8440, 10.9729, -3.7033

Previews

White Background



This preview shows how the HunterLab color 65.3388, 3.9809, 0.1723 looks on a white background.

Color Contrast Check

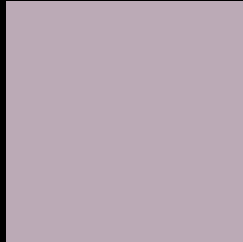
Large Text (above 18pt) WCAG AA × Fail

Any Text WCAG AA × Fail

Large Text (above 18pt) WCAG AAA × Fail

Any Text WCAG AAA × Fail

Black Background



This preview shows how the HunterLab color 65.3388, 3.9809, 0.1723 looks on a black background.

Color Contrast Check

Large Text (above 18pt) WCAG AA ✓ Pass

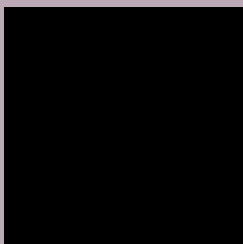
Any Text WCAG AA ✓ Pass

Large Text (above 18pt) WCAG AAA ✓ Pass

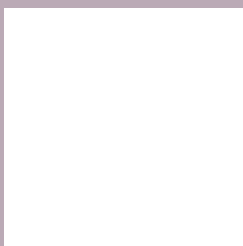
Any Text WCAG AAA ✓ Pass

If you want to check with other color combinations, try the [Color Contrast Checker](#).

HunterLab 65.3388, 3.9809, 0.1723 Background



This preview shows how black text looks on a background with the HunterLab color 65.3388, 3.9809, 0.1723.



This preview shows how white text looks on a background with the HunterLab color 65.3388, 3.9809,

0.1723.

Color Blindness Simulation

Color vision deficiency is a very complex topic, and I could not describe the different causes any better than Wikipedia does, so if you want to learn more, you should check out their [article about color blindness](#).

Dichromacy



Original Color

65.3388, 3.9809, 0.1723

Protanopia

65.4574, -1.4716, -0.7659

Deuteranopia

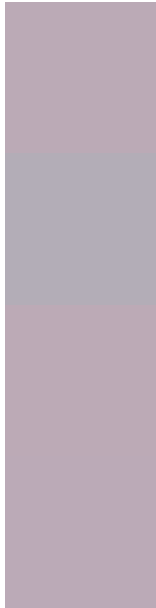
65.4356, 4.3063, 0.2970



Tritanopia

65.3706, 4.1512, -0.2789

Trichromacy



Original Color

65.3388, 3.9809, 0.1723

Protanomaly

65.4903, 0.0884, -0.2020

Deuteranomaly

65.4356, 4.3063, 0.2970

Tritanomaly

65.3706, 4.1512, -0.2789

Monochromacy



Original Color

65.3388, 3.9809, 0.1723

Achromatopsia

65.8903, -3.5157, 3.5799

Achromatomaly

65.7189, -0.9468, 2.4799

CSS Examples

Text

The CSS property to change the color of the text to HunterLab 65.3388, 3.9809, 0.1723 is called "color". The color property can be set on classes, ids or directly on the HTML element.

This example shows how text in the color `rgb(187, 170, 182)` looks like.

```
.text, #text, p{  
    color:rgb(187, 170, 182)  
}
```

If you want to add a text shadow in that color use the text-shadow property, you can generate a text shadow directly with our [CSS Text Shadow Generator](#).

Here you see how black text with a 4 pixel rgb(187, 170, 182) colored shadow looks like.

```
.shadow{ text-shadow: 4px 4px 2px rgb(187, 170, 182) }
```

Border

The CSS property to change the border of an element to HunterLab 65.3388, 3.9809, 0.1723 is called "border". The border property can be set on classes, ids or directly on the HTML element.

This example shows the color as border, it can be applied via the CSS property "border" or "border-color".

```
.border, #border, table{ border:4px solid rgb(187, 170, 182) }
```


If only the border color should be changed use the property `border-color`.

```
.border{ border-color:rgb(187, 170, 182) }
```

If you want to add a box shadow in that color use:

Here you see how a box with a 4 pixel `rgb(187, 170, 182)` colored shadow looks like.

```
.boxshadow{ -moz-box-shadow:4px 4px 4px  
4px rgb(187, 170, 182); -webkit-box-  
shadow:4px 4px 4px 4px rgb(187, 170, 182);  
box-shadow:4px 4px 4px 4px rgb(187, 170,  
182) }
```

Background

The CSS property to change the background color of an element to HunterLab 65.3388, 3.9809, 0.1723 is called "background". The background property can be set on classes, ids or directly on the HTML element.

```
.background, #background, body{  
background: rgb(187, 170, 182) }
```

If only the background color should be changed can be used:

```
.background{ background-color: rgb(187,  
170, 182) }
```

This example shows the color as background, it is applied via the CSS property "background".

To optimize and compress your CSS code, you can use our [online CSS compressor and optimizer](#) based on csstidy. If you want to create a linear or radial gradient as background or border, check our [CSS Gradient Generator](#).

Hey! You found this booklet interesting? Support Converting Colors with the new Membership Option!

The pro membership hides all ads, plus gives you double the colors in the color bucket, and more awesome pro features!

[Learn more, Memberships starting at \\$2.50/m!](#)

**Follow me
on Twitter!**

@ConvertingColor