

Converting Colors

HunterLab(65.2727, 1.8163,
2.8637)

Have a look what the booklet for
HunterLab(65.2727, 1.8163, 2.8637)
contains.

HunterLab(65.2493, 1.8249, 2.9153)	3
<i>Conversions</i>	4
<i>Details</i>	6
<i>Harmonies</i>	12
<i>Previews</i>	24
<i>Color Blindness Simulation</i>	28
<i>CSS Examples</i>	31

Color

**HunterLab(65.2493, 1.8249,
2.9153)**

Conversions

Conversions Part 1

Format	Color
Hex	B9ABB0
RGB	185, 171, 176
RGB Percent	73%, 67%, 69%
CMY	0.2745, 0.3294, 0.3098
CMYK	0.00, 0.08, 0.05, 0.27
HSL	339°, 9%, 70%
HSV	339°, 8%, 73%
XYZ	42.4070, 42.5747, 47.0570
YIQ	175.7560, 6.7390, 4.5230

Conversions

Conversions Part 2

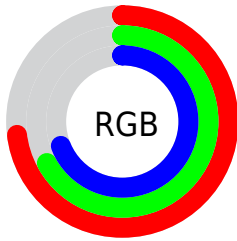
Format	Color
RYB	185, 171, 176
Decimal	12168112
CIELab	71.27, 5.92, -0.75
CIELCh	71, 5.966, 352.752
Yxy	42.5766, 0.3212, 0.3224
Android (android.graphics.Color)	4290358192 (0xFFB9ABB0)
YUV	175.7560, 0.1203, 8.1070
Hunter-Lab	65.2493, 1.8249, 2.9153

Details

The HunterLab color $65.2493, 1.8249, 2.9153$ is a light color, and the websafe version is hex 999999 . A complement of this color would be $68.3025, -8.7656, 4.4498$, and the grayscale version is $65.7876, -3.5103, 3.5744$.

A 20% lighter version of the original color is $88.8367, 1.3367, 3.8119$, and $44.2204, 2.3398, 1.7222$ is the 20% darker color. If you saturate the color by 10%, you get $59.6818, 9.2950, 1.9972$, and if you desaturate by 10%, it is $71.1010, -5.4781, 4.0911$.

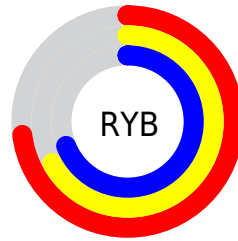
Distribution



Red (73%)

Green (67%)

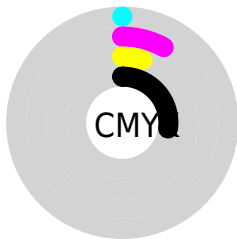
Blue (69%)



Red (73%)

Yellow (67%)

Blue (69%)

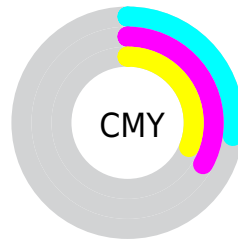


Cyan (0%)

Magenta (8%)

Yellow (5%)

Black (27%)



Cyan (27%)

Magenta (33%)

Yellow (31%)

Brightness & Saturation Gradients

These gradients show how the HunterLab color 65.2493, 1.8249, 2.9153 changes by changing the brightness by 10 percent. The first figure shows a shift by +10% for each color and the second figure -10%.

Similar to the brightness gradients but the following saturation gradients show a change of the HunterLab color 65.2493, 1.8249, 2.9153 by changing the saturation by 10% instead.

■ 65.2493, 1.8249,
2.9153

■ 65.2493, 1.8249,
2.9153

188.9094, -2.5842,
9.3796

■ 54.3627, 2.1015,
2.3609

■ 88.9222, 1.1186,
4.1365

■ 44.1583, 2.3237,
1.8450

101.6423, 0.7000,
4.7971

■ 34.6869, 2.4828,
1.3720

114.9171, 0.2411,
5.4892

■ 26.0103, 2.5694,
0.9462

128.7243, -0.2556,
6.2114

■ 18.2093, 2.5697,
0.5732

143.0440, -0.7882,
6.9626

■ 11.3962, 2.4619,
0.2612

157.8585, -1.3549,

■ 3.7446, 6.6872,

7.7416

-0.6294

173.1518, -1.9540,
8.5476

0.0000, NaN, NaN

0.0000, NaN, NaN

■ 65.2493, 1.8249,
2.9153

■ 65.2493, 1.8249,
2.9153

■ 59.6818, 9.2950,
1.9972

■ 71.1010, -5.4781,
4.0911

■ 54.4423, 16.9173,
1.3941

■ 77.1938, -12.6129,
5.4734

■ 49.5923, 24.6246,
1.1813

■ 83.4984, -19.5964,
7.0261

■ 45.2041, 32.2747,
1.4438

■ 89.9897, -26.4483,
8.7201

■ 41.3621, 39.6094,

■ 93.7338, -29.1457,

2.2664

7.3027

■ 38.1560, 46.2261,
3.7093

■ 94.1132, -26.9742,
1.8927

■ 35.6664, 51.6023,
5.7689

■ 94.3687, -25.5174,
-1.7374

■ 33.9396, 55.2245,
8.3372

■ 32.9259, 56.9262,
11.1642

Harmonies

Analogous

The Analogous color harmony consists of three colors that are next to each other on the color wheel.



65.2507, 0.7613, 0.4454



65.2493, 1.8249, 2.9153



65.2507, 1.4441, 5.4602

Triad

The Triadic color harmony groups three colors that are evenly spaced from another and form a triangle on the color wheel.



65.2507, 1.8232, 2.9164



65.2507, -5.5099, 8.0060



65.2507, -6.6430, -0.5644

Complementary

The Complementary color scheme is a pair of colors which are on the opposite of each other on the color wheel.



65.2493, 1.8249, 2.9153



68.3025, -8.7656, 4.4498

Split Complementary

Split-complementary colors differ from the complementary color scheme. The scheme consists of three colors, the original color and two neighbors of the complement color.



65.2507, -8.2722, 1.5839



65.2493, 1.8249, 2.9153



65.2507, -7.6256, 6.5126

Square

The Square scheme is like the rectangle color scheme, but the four colors are evenly spaced on the color wheel.



65.2507, 1.8232, 2.9164



65.2507, -2.8192, 8.3298



65.2507, -8.6290, 4.1808



65.2507, -4.1484, -1.6173

Rectangle

The Rectangle color scheme consists of four colors that form a rectangle on the color wheel.



65.2493, 1.8249, 2.9153



65.2507, 0.4282, 6.8627



65.2507, -8.6290, 4.1808



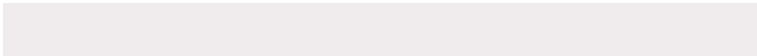
65.2507, -7.3083, 0.0577

Sweetspot

The Sweet Spot groups the original color and five complimentary colors.



65.2507, 1.8232, 2.9164



91.6121, -2.9948, 4.7350



65.0522, 1.7138, -1.7190



42.5748, -1.4388, 2.2063



96.5975, -5.1542, 5.2483



43.2801, -2.3093, 2.3515

Same Dimension

The Same Dimension uses a secret algorithm to generate beautiful new colors.



65.2507, 1.8232, 2.9164



86.1180, 4.0062, 3.6838



65.6448, 0.0823, 5.6511



30.1061, 1.4672, 1.2811



27.0260, 47.3225, 9.4051



5.1916, 9.3135, 0.0781

Inverse Universe

The Inverse Universe completely reimagines the original color for something new.



65.2507, 1.8232, 2.9164



86.1180, 4.0062, 3.6838



67.8851, -7.0110, 1.6197



30.1061, 1.4672, 1.2811



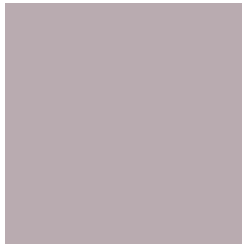
27.0260, 47.3225, 9.4051



5.1916, 9.3135, 0.0781

Previews

White Background



This preview shows how the HunterLab color 65.2493, 1.8249, 2.9153 looks on a white background.

Color Contrast Check

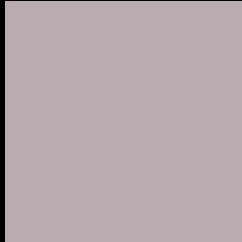
Large Text (above 18pt) WCAG AA × Fail

Any Text WCAG AA × Fail

Large Text (above 18pt) WCAG AAA × Fail

Any Text WCAG AAA × Fail

Black Background



This preview shows how the HunterLab color 65.2493, 1.8249, 2.9153 looks on a black background.

Color Contrast Check

Large Text (above 18pt) WCAG AA ✓ Pass

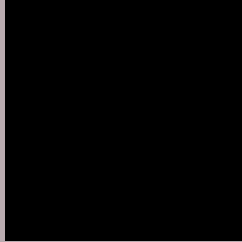
Any Text WCAG AA ✓ Pass

Large Text (above 18pt) WCAG AAA ✓ Pass

Any Text WCAG AAA ✓ Pass

If you want to check with other color combinations, try the [Color Contrast Checker](#).

HunterLab 65.2493, 1.8249, 2.9153 Background



This preview shows how black text looks on a background with the HunterLab color 65.2493, 1.8249, 2.9153.



This preview shows how white text looks on a background with the HunterLab color 65.2493, 1.8249,

2.9153.

Color Blindness Simulation

Color vision deficiency is a very complex topic, and I could not describe the different causes any better than Wikipedia does, so if you want to learn more, you should check out their [article about color blindness](#).

Dichromacy



Original Color

65.2493, 1.8249, 2.9153

Protanopia

65.4474, -1.8827, 2.1386

Deuteranopia

65.1596, 4.4775, 2.8551



Tritanopia

65.2744, 3.8275, -0.4037

Trichromacy



Original Color

65.2493, 1.8249, 2.9153

Protanomaly

65.3948, -0.6127, 2.5733

Deuteranomaly

65.2498, 3.3091, 2.9419

Tritanomaly

65.1796, 3.3187, 0.9432

Monochromacy



Original Color

65.2493, 1.8249, 2.9153

Achromatopsia

65.8903, -3.5157, 3.5799

Achromatomaly

65.5671, -1.5913, 3.2322

CSS Examples

Text

The CSS property to change the color of the text to HunterLab 65.2493, 1.8249, 2.9153 is called "color". The color property can be set on classes, ids or directly on the HTML element.

This example shows how text in the color `rgb(185, 171, 176)` looks like.

```
.text, #text, p{  
    color:rgb(185, 171, 176)  
}
```

If you want to add a text shadow in that color use the text-shadow property, you can generate a text shadow directly with our [CSS Text Shadow Generator](#).

Here you see how black text with a 4 pixel rgb(185, 171, 176) colored shadow looks like.

```
.shadow{ text-shadow: 4px 4px 2px rgb(185, 171, 176) }
```

Border

The CSS property to change the border of an element to HunterLab 65.2493, 1.8249, 2.9153 is called "border". The border property can be set on classes, ids or directly on the HTML element.

This example shows the color as border, it can be applied via the CSS property "border" or "border-color".

```
.border, #border, table{ border:4px solid rgb(185, 171, 176) }
```


If only the border color should be changed use the property `border-color`.

```
.border{ border-color:rgb(185, 171, 176) }
```

If you want to add a box shadow in that color use:

Here you see how a box with a 4 pixel `rgb(185, 171, 176)` colored shadow looks like.

```
.boxshadow{ -moz-box-shadow:4px 4px 4px  
4px rgb(185, 171, 176); -webkit-box-  
shadow:4px 4px 4px 4px rgb(185, 171, 176);  
box-shadow:4px 4px 4px 4px rgb(185, 171,  
176) }
```

Background

The CSS property to change the background color of an element to HunterLab 65.2493, 1.8249, 2.9153 is called "background". The background property can be set on classes, ids or directly on the HTML element.

```
.background, #background, body{  
background: rgb(185, 171, 176) }
```

If only the background color should be changed can be used:

```
.background{ background-color: rgb(185,  
171, 176) }
```

This example shows the color as background, it is applied via the CSS property "background".

To optimize and compress your CSS code, you can use our [online CSS compressor and optimizer](#) based on csstidy. If you want to create a linear or radial gradient as background or border, check our [CSS Gradient Generator](#).

Hey! You found this booklet interesting? Support Converting Colors with the new Membership Option!

The pro membership hides all ads, plus gives you double the colors in the color bucket, and more awesome pro features!

[Learn more, Memberships starting at \\$2.50/m!](#)

**Follow me
on Twitter!**

@ConvertingColor