

Converting Colors

HunterLab(65.2770, 1.8531,
3.5031)

Have a look what the booklet for
HunterLab(65.2770, 1.8531, 3.5031)
contains.

| | |
|---|----|
| HunterLab(65.3147, 1.9865, 3.4650) | 3 |
| <i>Conversions</i> | 4 |
| <i>Details</i> | 6 |
| <i>Harmonies</i> | 12 |
| <i>Previews</i> | 24 |
| <i>Color Blindness Simulation</i> | 28 |
| <i>CSS Examples</i> | 31 |

Color

**HunterLab(65.3147, 1.9865,
3.4650)**

Conversions

Conversions Part 1

| Format | Color |
|-------------|---------------------------|
| Hex | BAABAF |
| RGB | 186, 171, 175 |
| RGB Percent | 73%, 67%, 69% |
| CMY | 0.2706, 0.3294, 0.3137 |
| CMYK | 0.00, 0.08, 0.06, 0.27 |
| HSL | 344°, 10%, 70% |
| HSV | 344°, 8%, 73% |
| XYZ | 42.5505, 42.6601, 46.5490 |
| YIQ | 175.9410, 7.6560, 4.4240 |

Conversions

Conversions Part 2

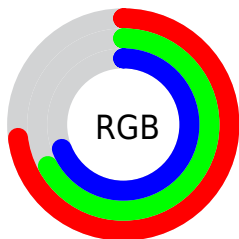
| Format | Color |
|-------------------------------------|------------------------------|
| RYB | 186, 171, 175 |
| Decimal | 12233647 |
| CIELab | 71.32, 6.10, -0.11 |
| CIELCh | 71, 6.099, 359.003 |
| Yxy | 42.6620, 0.3229, 0.3238 |
| Android (android.graphics.Color) | 4290423727 (0xFFBAABAF) |
| YUV | 175.9410, -0.4639, 8.8217 |
| Hunter-Lab | 65.3147, 1.9865, 3.4650 |

Details

The HunterLab color $65.3147, 1.9865, 3.4650$ is a light color, and the websafe version is hex 999999 . A complement of this color would be $68.6690, -8.9187, 3.9439$, and the grayscale version is $65.8667, -3.5145, 3.5787$.

A 20% lighter version of the original color is $88.8725, 1.3312, 4.8424$, and $44.2835, 2.4955, 2.2419$ is the 20% darker color. If you saturate the color by 10%, you get $59.6767, 9.2540, 3.2700$, and if you desaturate by 10%, it is $71.2417, -5.0963, 3.9105$.

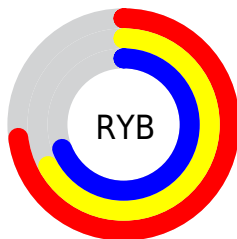
Distribution



Red (73%)

Green (67%)

Blue (69%)



Red (73%)

Yellow (67%)

Blue (69%)

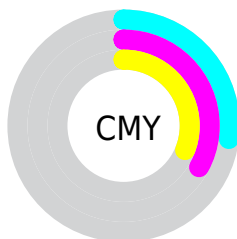


Cyan (0%)

Magenta (8%)

Yellow (6%)

Black (27%)



Cyan (27%)

Magenta (33%)

Yellow (31%)

Brightness & Saturation Gradients

These gradients show how the HunterLab color 65.3147, 1.9865, 3.4650 changes by changing the brightness by 10 percent. The first figure shows a shift by +10% for each color and the second figure -10%.

Similar to the brightness gradients but the following saturation gradients show a change of the HunterLab color 65.3147, 1.9865, 3.4650 by changing the saturation by 10% instead.

■ 65.3147, 1.9865,
3.4650

■ 65.3147, 1.9865,
3.4650

189.0026, -2.3589,
10.1608

■ 54.4242, 2.2543,
2.8785

■ 88.9947, 1.2964,
4.7453

■ 44.2157, 2.4673,
2.3284

101.7182, 0.8853,
5.4334

■ 34.7399, 2.6166,
1.8187

114.9961, 0.4336,
6.1518

■ 26.0584, 2.6926,
1.3527

128.8063, -0.0561,
6.8994

■ 18.2520, 2.6813,
0.9351

143.1289, -0.5820,
7.6750

■ 11.4328, 2.5607,
0.5723

157.9463, -1.1421,

■ 3.8299, 6.7333,

8.4777

0.0936

173.2423, -1.7348,
9.3066

0.0000, NaN, NaN

0.0000, NaN, NaN

■ 65.3147, 1.9865,
3.4650

■ 65.3147, 1.9865,
3.4650

■ 59.6767, 9.2540,
3.2700

■ 71.2417, -5.0963,
3.9105

■ 54.3732, 16.6967,
3.3751

■ 77.4137, -11.9975,
4.5597

■ 49.4677, 24.2534,
3.8422

■ 83.8003, -18.7374,
5.3785

■ 45.0357, 31.7873,
4.7336

■ 90.3762, -25.3382,
6.3389

■ 41.1651, 39.0426,

■ 94.0443, -27.5005,

6.0997

3.9020

■ 37.9496, 45.6136,
7.9515

■ 94.4348, -25.2731,
-1.6508

■ 35.4731, 50.9691,
10.2269

■ 33.7824, 54.5880,
12.7650

■ 32.8136, 56.3431,
15.2900

Harmonies

Analogous

The Analogous color harmony consists of three colors that are next to each other on the color wheel.



65.3161, 1.1931, 0.8611



65.3147, 1.9865, 3.4650



65.3161, 1.2894, 5.9912

Triad

The Triadic color harmony groups three colors that are evenly spaced from another and form a triangle on the color wheel.



65.3161, 1.9848, 3.4661



65.3161, -6.0798, 7.8799



65.3161, -6.2395, -0.9912

Complementary

The Complementary color scheme is a pair of colors which are on the opposite of each other on the color wheel.



65.3147, 1.9865, 3.4650



68.6690, -8.9187, 3.9439

Split Complementary

Split-complementary colors differ from the complementary color scheme. The scheme consists of three colors, the original color and two neighbors of the complement color.



65.3161, -8.1331, 1.0218



65.3147, 1.9865, 3.4650



65.3161, -8.0420, 6.1395

Square

The Square scheme is like the rectangle color scheme, but the four colors are evenly spaced on the color wheel.



65.3161, 1.9848, 3.4661



65.3161, -3.3948, 8.4739



65.3161, -8.7875, 3.6445



65.3161, -3.5823, -1.7782

Rectangle

The Rectangle color scheme consists of four colors that form a rectangle on the color wheel.



65.3147, 1.9865, 3.4650



65.3161, 0.0827, 7.3056



65.3161, -8.7875, 3.6445



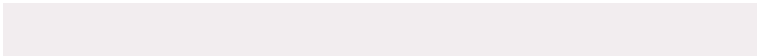
65.3161, -6.9848, -0.4314

Sweetspot

The Sweet Spot groups the original color and five complimentary colors.



65.3161, 1.9848, 3.4661



92.7031, -3.1061, 4.9912



65.2825, 2.5600, -1.9191



43.5420, -1.5037, 2.3453



97.7295, -5.2146, 5.3098



44.2712, -2.3622, 2.4053

Same Dimension

The Same Dimension uses a secret algorithm to generate beautiful new colors.



65.3161, 1.9848, 3.4661



86.3048, 4.7091, 4.5809



66.2169, -0.4109, 6.2957



30.0840, 1.3484, 1.5961



26.8075, 46.5177, 12.6006



5.1377, 9.1174, 0.8482

Inverse Universe

The Inverse Universe completely reimagines the original color for something new.



65.3161, 1.9848, 3.4661



86.3048, 4.7091, 4.5809



67.7241, -6.5277, 0.9473



30.0840, 1.3484, 1.5961



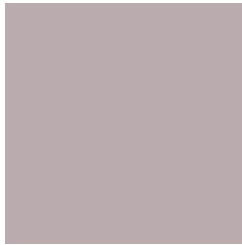
26.8075, 46.5177, 12.6006



5.1377, 9.1174, 0.8482

Previews

White Background



This preview shows how the HunterLab color 65.3147, 1.9865, 3.4650 looks on a white background.

Color Contrast Check

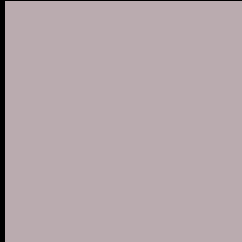
Large Text (above 18pt) WCAG AA × Fail

Any Text WCAG AA × Fail

Large Text (above 18pt) WCAG AAA × Fail

Any Text WCAG AAA × Fail

Black Background



This preview shows how the HunterLab color 65.3147, 1.9865, 3.4650 looks on a black background.

Color Contrast Check

Large Text (above 18pt) WCAG AA ✓ Pass

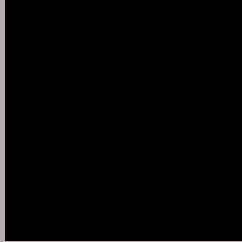
Any Text WCAG AA ✓ Pass

Large Text (above 18pt) WCAG AAA ✓ Pass

Any Text WCAG AAA ✓ Pass

If you want to check with other color combinations, try the [Color Contrast Checker](#).

HunterLab 65.3147, 1.9865, 3.4650 Background



This preview shows how black text looks on a background with the HunterLab color 65.3147, 1.9865, 3.4650.



This preview shows how white text looks on a background with the HunterLab color 65.3147, 1.9865,

3.4650.

Color Blindness Simulation

Color vision deficiency is a very complex topic, and I could not describe the different causes any better than Wikipedia does, so if you want to learn more, you should check out their [article about color blindness](#).

Dichromacy



Original Color

65.3147, 1.9865, 3.4650

Protanopia

65.4168, -2.0496, 2.5743

Deuteranopia

65.2284, 4.6480, 3.4097



Tritanopia

65.3706, 4.1512, -0.2789

Trichromacy



Original Color

65.3147, 1.9865, 3.4650

Protanomaly

65.3644, -0.7779, 3.0064

Deuteranomaly

65.3172, 3.4761, 3.4941

Tritanomaly

65.2760, 3.6435, 1.0662

Monochromacy



Original Color

65.3147, 1.9865, 3.4650

Achromatopsia

65.8903, -3.5157, 3.5799

Achromatomaly

65.6582, -1.2772, 3.3454

CSS Examples

Text

The CSS property to change the color of the text to HunterLab 65.3147, 1.9865, 3.4650 is called "color". The color property can be set on classes, ids or directly on the HTML element.

This example shows how text in the color `rgb(186, 171, 175)` looks like.

```
.text, #text, p{  
    color:rgb(186, 171, 175)  
}
```

If you want to add a text shadow in that color use the text-shadow property, you can generate a text shadow directly with our [CSS Text Shadow Generator](#).

Here you see how black text with a 4 pixel rgb(186, 171, 175) colored shadow looks like.

```
.shadow{ text-shadow: 4px 4px 2px rgb(186, 171, 175) }
```

Border

The CSS property to change the border of an element to HunterLab 65.3147, 1.9865, 3.4650 is called "border". The border property can be set on classes, ids or directly on the HTML element.

This example shows the color as border, it can be applied via the CSS property "border" or "border-color".

```
.border, #border, table{ border:4px solid rgb(186, 171, 175) }
```


If only the border color should be changed use the property `border-color`.

```
.border{ border-color:rgb(186, 171, 175) }
```

If you want to add a box shadow in that color use:

Here you see how a box with a 4 pixel `rgb(186, 171, 175)` colored shadow looks like.

```
.boxshadow{ -moz-box-shadow:4px 4px 4px  
4px rgb(186, 171, 175); -webkit-box-  
shadow:4px 4px 4px 4px rgb(186, 171, 175);  
box-shadow:4px 4px 4px 4px rgb(186, 171,  
175) }
```

Background

The CSS property to change the background color of an element to HunterLab 65.3147, 1.9865, 3.4650 is called "background". The background property can be set on classes, ids or directly on the HTML element.

```
.background, #background, body{  
background: rgb(186, 171, 175) }
```

If only the background color should be changed can be used:

```
.background{ background-color: rgb(186,  
171, 175) }
```

This example shows the color as background, it is applied via the CSS property "background".

To optimize and compress your CSS code, you can use our [online CSS compressor and optimizer](#) based on csstidy. If you want to create a linear or radial gradient as background or border, check our [CSS Gradient Generator](#).

Hey! You found this booklet interesting? Support Converting Colors with the new Membership Option!

The pro membership hides all ads, plus gives you double the colors in the color bucket, and more awesome pro features!

[Learn more, Memberships starting at \\$2.50/m!](#)

**Follow me
on Twitter!**

@ConvertingColor