

Converting Colors

HunterLab(65.3150, -0.3208,
15.7379)

Have a look what the booklet for
HunterLab(65.3150, -0.3208,
15.7379) contains.

HunterLab(65.2216, 0.1068, 15.4702)	3
<i>Conversions</i>	4
<i>Details</i>	6
<i>Harmonies</i>	12
<i>Previews</i>	24
<i>Color Blindness Simulation</i>	28
<i>CSS Examples</i>	31

Color

**HunterLab(65.2216, 0.1068,
15.4702)**

Conversions

Conversions Part 1

Format	Color
Hex	C1AB92
RGB	193, 171, 146
RGB Percent	76%, 67%, 57%
CMY	0.2431, 0.3294, 0.4274
CMYK	0.00, 0.11, 0.24, 0.24
HSL	32°, 27%, 66%
HSV	32°, 24%, 76%
XYZ	41.7435, 42.5386, 33.2047
YIQ	174.7280, 21.1370, -3.1110

Conversions

Conversions Part 2

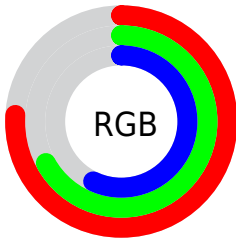
Format	Color
RYB	187, 193, 146
Decimal	12692370
CIELab	71.24, 4.02, 15.80
CIElCh	71, 16.300, 75.716
Yxy	42.5405, 0.3553, 0.3621
Android (android.graphics.Color)	4290882450 (0xFFC1AB92)
YUV	174.7280, -14.1629, 16.0245
Hunter-Lab	65.2216, 0.1068, 15.4702

Details

The HunterLab color $65.2216, 0.1068, 15.4702$ is a light color, and the websafe version is hex $CC9999$. A complement of this color would be $61.6161, -5.0379, -10.6682$, and the grayscale version is $65.4134, -3.4903, 3.5540$.

A 20% lighter version of the original color is $88.8183, -0.5909, 18.2421$, and $44.1688, 0.7417, 12.6967$ is the 20% darker color. If you saturate the color by 10%, you get $62.2037, 2.2524, 19.3280$, and if you desaturate by 10%, it is $68.3540, -1.7401, 11.0871$.

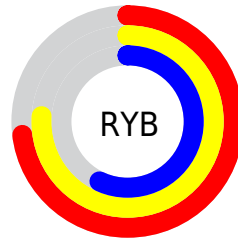
Distribution



Red (76%)

Green (67%)

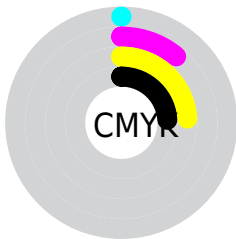
Blue (57%)



Red (73%)

Yellow (76%)

Blue (57%)

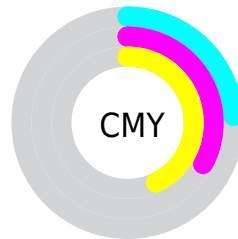


Cyan (0%)

Magenta (11%)

Yellow (24%)

Black (24%)



Cyan (24%)

Magenta (33%)

Yellow (43%)

Brightness & Saturation Gradients

These gradients show how the HunterLab color 65.2216, 0.1068, 15.4702 changes by changing the brightness by 10 percent. The first figure shows a shift by +10% for each color and the second figure -10%.

Similar to the brightness gradients but the following saturation gradients show a change of the HunterLab color 65.2216, 0.1068, 15.4702 by changing the saturation by 10% instead.

■ 65.2216, 0.1068,
15.4702

■ 65.2216, 0.1068,
15.4702

188.8700, -5.0008,
28.2276

■ 54.3367, 0.4789,
14.0175

■ 88.8915, -0.7773,
18.3252

■ 44.1340, 0.8030,
12.5334

■ 101.6103, -1.2787,
19.7382

■ 34.6645, 1.0714,
11.0039

114.8838, -1.8170,
21.1477

■ 25.9899, 1.2763,
9.4054

128.6896, -2.3903,
22.5566

■ 18.1912, 1.4066,
7.6999

143.0081, -2.9967,
23.9674

■ 11.3808, 1.4447,
6.6601

157.8214, -3.6348,

■ 3.7080, 4.5279,

25.3819

2.5956

173.1135, -4.3032,
26.8015

0.0000, NaN, NaN

0.0000, NaN, NaN

■ 65.2216, 0.1068,
15.4702

■ 65.2216, 0.1068,
15.4702

■ 62.2037, 2.2524,
19.3280

■ 68.3540, -1.7401,
11.0871

■ 59.3046, 4.7198,
22.6084

■ 71.5881, -3.3009,
6.2230

■ 56.5352, 7.5199,
25.2629

■ 74.9181, -4.5975,
0.9228

■ 53.9053, 10.6589,
27.2457

■ 78.3370, -5.6495,
-4.7736

■ 51.4247, 14.1331,

■ 81.8387, -6.4757,

28.5207

-10.8302

■ 49.1027, 17.9239,
29.0712

■ 85.1561, -8.5362,
-13.5473

■ 46.9466, 21.9910,
28.9172

■ 88.0540, -13.1433,
-9.6745

■ 45.7971, 24.3525,
28.6463

■ 91.0037, -17.6941,
-5.8717

■ 94.0025, -22.1904,
-2.1364

Harmonies

Analogous

The Analogous color harmony consists of three colors that are next to each other on the color wheel.



65.2231, 6.8704, 12.6090



65.2216, 0.1068, 15.4702



65.2231, -7.3358, 15.4001

Triad

The Triadic color harmony groups three colors that are evenly spaced from another and form a triangle on the color wheel.



65.2231, 0.1047, 15.4711



65.2231, -16.7652, -0.2674



65.2231, 7.1406, -6.7484

Complementary

The Complementary color scheme is a pair of colors which are on the opposite of each other on the color wheel.



65.2216, 0.1068, 15.4702



61.6161, -5.0379, -10.6682

Split Complementary

Split-complementary colors differ from the complementary color scheme. The scheme consists of three colors, the original color and two neighbors of the complement color.



65.2231, 0.4600, -11.0485



65.2216, 0.1068, 15.4702



65.2231, -13.2295, -7.0289

Square

The Square scheme is like the rectangle color scheme, but the four colors are evenly spaced on the color wheel.



65.2231, 0.1047, 15.4711



65.2231, -16.8507, 6.8380



65.2231, -6.9960, -11.1566



65.2231, 11.0549, 0.0819

Rectangle

The Rectangle color scheme consists of four colors that form a rectangle on the color wheel.



65.2216, 0.1068, 15.4702



65.2231, -11.6730, 13.7149



65.2231, -6.9960, -11.1566



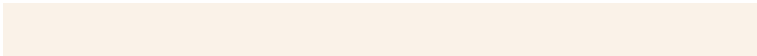
65.2231, 5.1309, -8.5700

Sweetspot

The Sweet Spot groups the original color and five complimentary colors.



65.2231, 0.1047, 15.4711



94.5984, -3.8779, 10.1841



58.9488, 16.1641, -1.0067



43.6937, -1.7396, 4.9030



98.8636, -5.2751, 5.3714



45.2661, -2.4153, 2.4594

Same Dimension

The Same Dimension uses a secret algorithm to generate beautiful new colors.



65.2231, 0.1047, 15.4711



85.2058, 1.5545, 23.4308



71.7288, -10.9241, 21.5290



33.0835, -1.2069, 4.1247



37.5651, 19.3783, 23.4867



8.6413, 2.2803, 5.3646

Inverse Universe

The Inverse Universe completely reimagines the original color for something new.



61.6161, -5.0379, -10.6682



79.4064, -6.6724, -18.6559



55.3097, 6.1545, -19.8937



32.4156, -2.1668, -0.7042



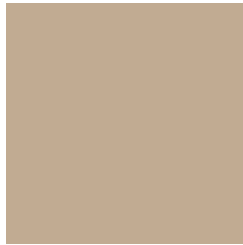
27.6008, 9.4558, -54.9108



6.8338, -0.0796, -8.3697

Previews

White Background



This preview shows how the HunterLab color 65.2216, 0.1068, 15.4702 looks on a white background.

Color Contrast Check

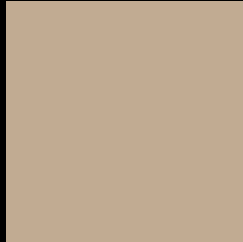
Large Text (above 18pt) WCAG AA × Fail

Any Text WCAG AA × Fail

Large Text (above 18pt) WCAG AAA × Fail

Any Text WCAG AAA × Fail

Black Background



This preview shows how the HunterLab color 65.2216, 0.1068, 15.4702 looks on a black background.

Color Contrast Check

Large Text (above 18pt) WCAG AA ✓ Pass

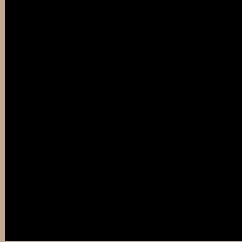
Any Text WCAG AA ✓ Pass

Large Text (above 18pt) WCAG AAA ✓ Pass

Any Text WCAG AAA ✓ Pass

If you want to check with other color combinations, try the [Color Contrast Checker](#).

HunterLab 65.2216, 0.1068, 15.4702 Background



This preview shows how black text looks on a background with the HunterLab color 65.2216, 0.1068, 15.4702.



This preview shows how white text looks on a background with the HunterLab color 65.2216, 0.1068,

15.4702.

Color Blindness Simulation

Color vision deficiency is a very complex topic, and I could not describe the different causes any better than Wikipedia does, so if you want to learn more, you should check out their [article about color blindness](#).

Dichromacy



Original Color

65.2216, 0.1068, 15.4702

Protanopia

65.2691, -4.1481, 14.6955

Deuteranopia

65.2145, 4.5465, 15.1684



Tritanopia

65.1133, 8.8622, 1.4440

Trichromacy



Original Color

65.2216, 0.1068, 15.4702

Protanomaly

65.2369, -2.7923, 15.0623

Deuteranomaly

65.1830, 2.9793, 15.1095

Tritanomaly

65.2158, 5.5987, 7.0464

Monochromacy



Original Color

65.2216, 0.1068, 15.4702

Achromatopsia

65.4745, -3.4936, 3.5574

Achromatomaly

65.4962, -2.5294, 8.5203

CSS Examples

Text

The CSS property to change the color of the text to HunterLab 65.2216, 0.1068, 15.4702 is called "color". The color property can be set on classes, ids or directly on the HTML element.

This example shows how text in the color `rgb(193, 171, 146)` looks like.

```
.text, #text, p{  
    color:rgb(193, 171, 146)  
}
```

If you want to add a text shadow in that color use the text-shadow property, you can generate a text shadow directly with our [CSS Text Shadow Generator](#).

Here you see how black text with a 4 pixel rgb(193, 171, 146) colored shadow looks like.

```
.shadow{ text-shadow: 4px 4px 2px rgb(193, 171, 146) }
```

Border

The CSS property to change the border of an element to HunterLab 65.2216, 0.1068, 15.4702 is called "border". The border property can be set on classes, ids or directly on the HTML element.

This example shows the color as border, it can be applied via the CSS property "border" or "border-color".

```
.border, #border, table{ border:4px solid rgb(193, 171, 146) }
```


If only the border color should be changed use the property `border-color`.

```
.border{ border-color:rgb(193, 171, 146) }
```

If you want to add a box shadow in that color use:

Here you see how a box with a 4 pixel `rgb(193, 171, 146)` colored shadow looks like.

```
.boxshadow{ -moz-box-shadow:4px 4px 4px 4px rgb(193, 171, 146); -webkit-box-shadow:4px 4px 4px 4px rgb(193, 171, 146); box-shadow:4px 4px 4px 4px rgb(193, 171, 146) }
```

Background

The CSS property to change the background color of an element to HunterLab 65.2216, 0.1068, 15.4702 is called "background". The background property can be set on classes, ids or directly on the HTML element.

```
.background, #background, body{  
background: rgb(193, 171, 146) }
```

If only the background color should be changed can be used:

```
.background{ background-color: rgb(193,  
171, 146) }
```

This example shows the color as background, it is applied via the CSS property "background".

To optimize and compress your CSS code, you can use our [online CSS compressor and optimizer](#) based on csstidy. If you want to create a linear or radial gradient as background or border, check our [CSS Gradient Generator](#).

Hey! You found this booklet interesting? Support Converting Colors with the new Membership Option!

The pro membership hides all ads, plus gives you double the colors in the color bucket, and more awesome pro features!

[Learn more, Memberships starting at \\$2.50/m!](#)

**Follow me
on Twitter!**

@ConvertingColor