

Converting Colors

HunterLab(65.4214, 6.3899,
7.1121)

Have a look what the booklet for
HunterLab(65.4214, 6.3899, 7.1121)
contains.

HunterLab(65.4225, 6.2878, 7.2909)	3
<i>Conversions</i>	4
<i>Details</i>	6
<i>Harmonies</i>	12
<i>Previews</i>	24
<i>Color Blindness Simulation</i>	28
<i>CSS Examples</i>	31

Color

**HunterLab(65.4225, 6.2878,
7.2909)**

Conversions

Conversions Part 1

Format	Color
Hex	C6A8A7
RGB	198, 168, 167
RGB Percent	78%, 66%, 65%
CMY	0.2235, 0.3412, 0.3451
CMYK	0.00, 0.15, 0.16, 0.22
HSL	2°, 21%, 72%
HSV	2°, 16%, 78%
XYZ	44.2664, 42.8010, 42.4875
YIQ	176.8560, 18.2010, 6.0490

Conversions

Conversions Part 2

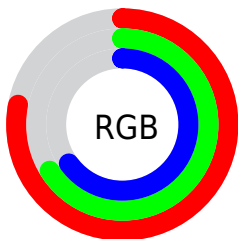
Format	Color
RYB	198, 168, 167
Decimal	13019303
CIELab	71.42, 10.76, 4.58
CIELCh	71, 11.690, 23.042
Yxy	42.8030, 0.3417, 0.3304
Android (android.graphics.Color)	4291209383 (0xFFC6A8A7)
YUV	176.8560, -4.8590, 18.5433
Hunter-Lab	65.4225, 6.2878, 7.2909

Details

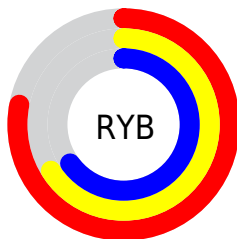
The HunterLab color $65.4225, 6.2878, 7.2909$ is a light color, and the websafe version is hex $CC9999$. A complement of this color would be $72.2661, -12.6088, 0.4761$, and the grayscale version is $66.2621, -3.5356, 3.6001$.

A 20% lighter version of the original color is $89.0558, 6.1299, 8.9740$, and $44.3372, 6.3170, 5.7412$ is the 20% darker color. If you saturate the color by 10%, you get $59.6363, 13.2496, 9.4538$, and if you desaturate by 10%, it is $71.5509, -0.3723, 5.2178$.

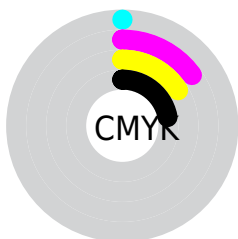
Distribution



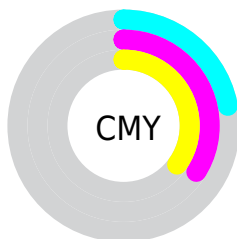
- Red (78%)
- Green (66%)
- Blue (65%)



- Red (78%)
- Yellow (66%)
- Blue (65%)



- Cyan (0%)
- Magenta (15%)
- Yellow (16%)
- Black (22%)





- Cyan (22%)
- Magenta (34%)
- Yellow (35%)

Brightness & Saturation Gradients


These gradients show how the HunterLab color 65.4225, 6.2878, 7.2909 changes by changing the brightness by 10 percent. The first figure shows a shift by +10% for each color and the second figure -10%.


Similar to the brightness gradients but the following saturation gradients show a change of the HunterLab color 65.4225, 6.2878, 7.2909 by changing the saturation by 10% instead.


 65.4225, 6.2878,
7.2909


 65.4225, 6.2878,
7.2909


189.1562, 3.6309,
15.6943

 54.5257, 6.3251,
6.4650


 89.1142, 6.0246,
9.0100

 44.3104, 6.2944,
5.6586

 101.8432, 5.8134,
9.9013

 34.8273, 6.1838,
4.8712

115.1263, 5.5539,
10.8143

 26.1378, 5.9802,
4.1000

128.9415, 5.2494,
11.7486

 18.3226, 5.6649,
3.3396

143.2690, 4.9026,
12.7040

 11.4931, 5.2094,
2.5780

158.0910, 4.5159,

 3.9663, 11.6062,

13.6803

2.7764

173.3916, 4.0914,
14.6771

0.0000, NaN, NaN

0.0000, NaN, NaN

■ 65.4225, 6.2878,
7.2909

■ 65.4225, 6.2878,
7.2909

■ 59.6363, 13.2496,
9.4538

■ 71.5509, -0.3723,
5.2178

■ 54.2501, 20.5093,
11.6937

■ 77.9676, -6.7443,
3.2292

■ 49.3419, 27.9955,
13.9801

■ 84.6346, -12.8622,
1.3188

■ 45.0028, 35.5365,
16.2460

■ 91.5203, -18.7611,
-0.5230

■ 41.3342, 42.8093,

■ 95.2606, -22.2377,

18.3747

-0.5738

■ 38.4341, 49.3218,
20.1991

■ 36.3724, 54.4844,
21.5343

■ 35.1552, 57.8150,
22.2581

■ 34.8497, 58.6549,
22.5011

Harmonies

Analogous

The Analogous color harmony consists of three colors that are next to each other on the color wheel.



65.4240, 7.0789, 2.3596



65.4225, 6.2878, 7.2909



65.4240, 2.8331, 10.9371

Triad

The Triadic color harmony groups three colors that are evenly spaced from another and form a triangle on the color wheel.



65.4240, 6.2857, 7.2920



65.4240, -11.5462, 9.1982



65.4240, -4.7411, -6.9636

Complementary

The Complementary color scheme is a pair of colors which are on the opposite of each other on the color wheel.



65.4225, 6.2878, 7.2909



72.2661, -12.6088, 0.4761

Split Complementary

Split-complementary colors differ from the complementary color scheme. The scheme consists of three colors, the original color and two neighbors of the complement color.



65.4240, -9.5901, -4.7880



65.4225, 6.2878, 7.2909



65.4240, -13.4361, 4.7405

Square

The Square scheme is like the rectangle color scheme, but the four colors are evenly spaced on the color wheel.



65.4240, 6.2857, 7.2920



65.4240, -7.4888, 11.9741



65.4240, -12.7317, -0.4031



65.4240, 0.5983, -6.1425

Rectangle

The Rectangle color scheme consists of four colors that form a rectangle on the color wheel.



65.4225, 6.2878, 7.2909



65.4240, -0.4540, 12.2808



65.4240, -12.7317, -0.4031



65.4240, -6.4802, -6.5530

Sweetspot

The Sweet Spot groups the original color and five complimentary colors.



65.4240, 6.2857, 7.2920



95.7003, -0.9983, 6.7866



66.1038, 11.8842, -6.6987



43.9993, -0.1763, 3.2288

0.0000, NaN, NaN



46.2646, -2.4686, 2.5136

Same Dimension

The Same Dimension uses a secret algorithm to generate beautiful new colors.



65.4240, 6.2857, 7.2920



84.2097, 11.6799, 10.7342



69.7640, -1.3169, 11.8943



32.6971, 0.9802, 2.8247



28.1467, 47.1547, 18.1694



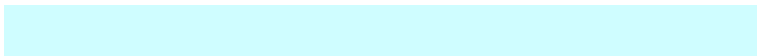
6.2832, 9.7338, 4.0421

Inverse Universe

The Inverse Universe completely reimagines the original color for something new.



72.2661, -12.6088, 0.4761



95.3645, -19.1715, -0.3920



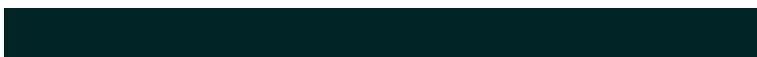
67.6330, -5.2546, -5.2527



34.6502, -4.4035, 0.8822



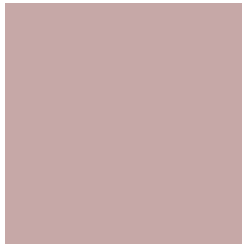
52.0351, -26.4287, -7.9874



11.4060, -5.8510, -1.6259

Previews

White Background



This preview shows how the HunterLab color 65.4225, 6.2878, 7.2909 looks on a white background.

Color Contrast Check

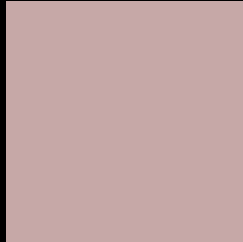
Large Text (above 18pt) WCAG AA × Fail

Any Text WCAG AA × Fail

Large Text (above 18pt) WCAG AAA × Fail

Any Text WCAG AAA × Fail

Black Background



This preview shows how the HunterLab color 65.4225, 6.2878, 7.2909 looks on a black background.

Color Contrast Check

Large Text (above 18pt) WCAG AA ✓ Pass

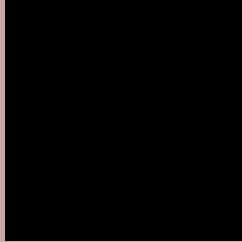
Any Text WCAG AA ✓ Pass

Large Text (above 18pt) WCAG AAA ✓ Pass

Any Text WCAG AAA ✓ Pass

If you want to check with other color combinations, try the [Color Contrast Checker](#).

HunterLab 65.4225, 6.2878, 7.2909 Background



This preview shows how black text looks on a background with the HunterLab color 65.4225, 6.2878, 7.2909.



This preview shows how white text looks on a background with the HunterLab color 65.4225, 6.2878,

Color Blindness Simulation

Color vision deficiency is a very complex topic, and I could not describe the different causes any better than Wikipedia does, so if you want to learn more, you should check out their [article about color blindness](#).

Dichromacy



Original Color

65.4225, 6.2878, 7.2909

Protanopia

65.3897, -2.5593, 5.7653

Deuteranopia

65.3973, 4.7472, 7.2356



Tritanopia

65.4267, 9.8904, 1.8410

Trichromacy



Original Color

65.4225, 6.2878, 7.2909

Protanomaly

65.4284, 0.5301, 6.3114

Deuteranomaly

65.4994, 5.0892, 7.3562

Tritanomaly

65.4788, 8.3847, 3.7704

Monochromacy



Original Color

65.4225, 6.2878, 7.2909

Achromatopsia

66.3066, -3.5380, 3.6026

Achromatomaly

66.0330, -0.1678, 5.1882

CSS Examples

Text

The CSS property to change the color of the text to HunterLab 65.4225, 6.2878, 7.2909 is called "color". The color property can be set on classes, ids or directly on the HTML element.

This example shows how text in the color `rgb(198, 168, 167)` looks like.

```
.text, #text, p{  
    color:rgb(198, 168, 167)  
}
```

If you want to add a text shadow in that color use the text-shadow property, you can generate a text shadow directly with our [CSS Text Shadow Generator](#).

Here you see how black text with a 4 pixel rgb(198, 168, 167) colored shadow looks like.

```
.shadow{ text-shadow: 4px 4px 2px rgb(198, 168, 167) }
```

Border

The CSS property to change the border of an element to HunterLab 65.4225, 6.2878, 7.2909 is called "border".

The border property can be set on classes, ids or directly on the HTML element.

This example shows the color as border, it can be applied via the CSS property "border" or "border-color".

```
.border, #border, table{ border:4px solid rgb(198, 168, 167) }
```


If only the border color should be changed use the property border-color.

```
.border{ border-color:rgb(198, 168, 167) }
```

If you want to add a box shadow in that color use:

Here you see how a box with a 4 pixel rgb(198, 168, 167) colored shadow looks like.

```
.boxshadow{ -moz-box-shadow:4px 4px 4px  
4px rgb(198, 168, 167); -webkit-box-  
shadow:4px 4px 4px 4px rgb(198, 168, 167);  
box-shadow:4px 4px 4px 4px rgb(198, 168,  
167) }
```

Background

The CSS property to change the background color of an element to HunterLab 65.4225, 6.2878, 7.2909 is called "background". The background property can be set on classes, ids or directly on the HTML element.

```
.background, #background, body{  
background: rgb(198, 168, 167) }
```

If only the background color should be changed can be used:

```
.background{ background-color: rgb(198,  
168, 167) }
```

This example shows the color as background, it is applied via the CSS property "background".

To optimize and compress your CSS code, you can use our [online CSS compressor and optimizer](#) based on csstidy. If you want to create a linear or radial gradient as background or border, check our [CSS Gradient Generator](#).

Hey! You found this booklet interesting? Support Converting Colors with the new Membership Option!

The pro membership hides all ads, plus gives you double the colors in the color bucket, and more awesome pro features!

[Learn more, Memberships starting at \\$2.50/m!](#)

**Follow me
on Twitter!**

@ConvertingColor