

Converting Colors

HunterLab(65.4255, 23.5798,
1.4184)

Have a look what the booklet for
HunterLab(65.4255, 23.5798,
1.4184) contains.

HunterLab(65.3913, 23.5748, 1.5554)	3
<i>Conversions</i>	4
<i>Details</i>	6
<i>Harmonies</i>	12
<i>Previews</i>	24
<i>Color Blindness Simulation</i>	28
<i>CSS Examples</i>	31

Color

**HunterLab(65.3913, 23.5748,
1.5554)**

Conversions

Conversions Part 1

Format	Color
Hex	DF9CB4
RGB	223, 156, 180
RGB Percent	87%, 61%, 71%
CMY	0.1255, 0.3882, 0.2941
CMYK	0.00, 0.30, 0.19, 0.13
HSL	339°, 51%, 74%
HSV	339°, 30%, 87%
XYZ	50.5581, 42.7602, 48.7689
YIQ	178.7690, 32.2280, 21.6680

Conversions

Conversions Part 2

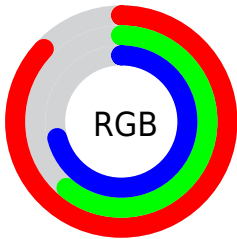
Format	Color
R _Y B	223, 156, 180
Decimal	14654644
CIE Lab	71.39, 28.43, -2.35
CIE LCh	71, 28.528, 355.283
Yxy	42.7622, 0.3558, 0.3009
Android (android.graphics.Color)	4292844724 (0xFFDF9CB4)
YUV	178.7690, 0.6069, 38.7906
Hunter-Lab	65.3913, 23.5748, 1.5554

Details

The HunterLab color $65.3913, 23.5748, 1.5554$ is a light color, and the websafe version is hex $CC9999$. A complement of this color would be $79.9799, -27.4625, 8.7451$, and the grayscale version is $67.0336, -3.5767, 3.6421$.

A 20% lighter version of the original color is $85.9678, 14.9893, -1.4952$, and $44.3265, 21.9640, 0.8416$ is the 20% darker color. If you saturate the color by 10%, you get $59.4968, 33.1992, 1.4412$, and if you desaturate by 10%, it is $71.8051, 14.0130, 2.1953$.

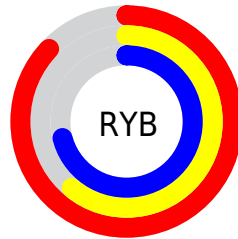
Distribution



Red (87%)

Green (61%)

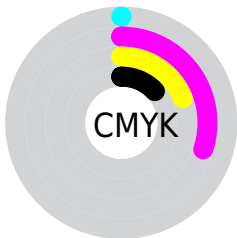
Blue (71%)



Red (87%)

Yellow (61%)

Blue (71%)

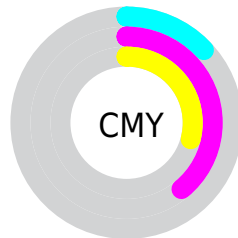


Cyan (0%)

Magenta (30%)

Yellow (19%)

Black (13%)



Cyan (13%)

Magenta (39%)

Yellow (29%)

Brightness & Saturation Gradients

These gradients show how the HunterLab color 65.3913, 23.5748, 1.5554 changes by changing the brightness by 10 percent. The first figure shows a shift by +10% for each color and the second figure -10%.

Similar to the brightness gradients but the following saturation gradients show a change of the HunterLab color 65.3913, 23.5748, 1.5554 by changing the saturation by 10% instead.

65.3913, 23.5748,
1.5554

65.3913, 23.5748,
1.5554

189.1118, 27.0373,
7.4628

54.4964, 22.8017,
1.0779

89.0797, 24.8353,
2.6351

44.2831, 21.9246,
0.6436

101.8070, 25.3444,
3.2296

34.8020, 20.9284,
0.2581

115.0887, 25.7807,
3.8582

26.1149, 19.7989,
-0.0728

128.9025, 26.1497,
4.5194

18.3022, 18.5238,
-0.3412

143.2285, 26.4560,
5.2117

11.4757, 17.1100,
-0.5351

158.0492, 26.7038,

3.9274, 31.3355,

5.9337

-2.2624

173.3485, 26.8965,
6.6844

0.0000, NaN, NaN

0.0000, NaN, NaN

■ 65.3913, 23.5748,
1.5554

■ 65.3913, 23.5748,
1.5554

■ 59.4968, 33.1992,
1.4412

■ 71.8051, 14.0130,
2.1953

■ 54.2146, 42.6736,
1.9597

■ 78.6529, 4.6278,
3.2574

■ 49.6571, 51.6112,
3.2160

■ 85.8706, -4.5450,
4.6606

■ 45.9381, 59.4407,
5.2681

■ 93.4059, -13.5044,
6.3398

■ 43.1501, 65.4721,

■ 97.0612, -15.9410,

8.0733

3.4932

■ 41.3281, 69.1191,
11.4423

■ 97.1741, -15.3105,
1.8860

■ 40.3303, 70.4983,
14.9648

Harmonies

Analogous

The Analogous color harmony consists of three colors that are next to each other on the color wheel.



65.3928, 18.5430, -11.6223



65.3913, 23.5748, 1.5554



65.3928, 20.8958, 12.9945

Triad

The Triadic color harmony groups three colors that are evenly spaced from another and form a triangle on the color wheel.



65.3928, 23.5723, 1.5567



65.3928, -13.9136, 21.7410



65.3928, -17.2382, -19.3765

Complementary

The Complementary color scheme is a pair of colors which are on the opposite of each other on the color wheel.



65.3913, 23.5748, 1.5554



79.9799, -27.4625, 8.7451

Split Complementary

Split-complementary colors differ from the complementary color scheme. The scheme consists of three colors, the original color and two neighbors of the complement color.



65.3928, -24.7596, -7.5317



65.3913, 23.5748, 1.5554



65.3928, -22.9488, 15.7962

Square

The Square scheme is like the rectangle color scheme, but the four colors are evenly spaced on the color wheel.



65.3928, 23.5723, 1.5567



65.3928, -1.4068, 23.2310



65.3928, -26.7655, 5.5009



65.3928, -5.5528, -25.1304

Rectangle

The Rectangle color scheme consists of four colors that form a rectangle on the color wheel.



65.3913, 23.5748, 1.5554



65.3928, 15.2047, 18.4087



65.3928, -26.7655, 5.5009



65.3928, -20.3000, -15.8743

Sweetspot

The Sweet Spot groups the original color and five complimentary colors.



65.3928, 23.5723, 1.5567



92.3627, 4.3349, 3.9352



64.1651, 22.9455, -24.5683



42.1745, 2.7378, 1.7217

0.0000, NaN, NaN



46.2646, -2.4686, 2.5136

Same Dimension

The Same Dimension uses a secret algorithm to generate beautiful new colors.



65.3928, 23.5723, 1.5567



71.7737, 34.4226, 1.6488



67.0646, 15.3899, 13.7858



37.1231, 1.9138, 1.5643



30.9570, 54.1748, 11.0118



8.2520, 14.6358, 1.4259

Inverse Universe

The Inverse Universe completely reimagines the original color for something new.



65.3928, 23.5723, 1.5567



71.7737, 34.4226, 1.6488



77.7970, -18.9119, -5.5978



37.1231, 1.9138, 1.5643



30.9570, 54.1748, 11.0118



8.2520, 14.6358, 1.4259

Previews

White Background



This preview shows how the HunterLab color 65.3913, 23.5748, 1.5554 looks on a white background.

Color Contrast Check

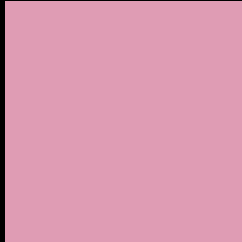
Large Text (above 18pt) WCAG AA × Fail

Any Text WCAG AA × Fail

Large Text (above 18pt) WCAG AAA × Fail

Any Text WCAG AAA × Fail

Black Background



This preview shows how the HunterLab color 65.3913, 23.5748, 1.5554 looks on a black background.

Color Contrast Check

Large Text (above 18pt) WCAG AA ✓ Pass

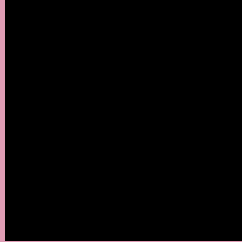
Any Text WCAG AA ✓ Pass

Large Text (above 18pt) WCAG AAA ✓ Pass

Any Text WCAG AAA ✓ Pass

If you want to check with other color combinations, try the [Color Contrast Checker](#).

HunterLab 65.3913, 23.5748, 1.5554 Background



This preview shows how black text looks on a background with the HunterLab color 65.3913, 23.5748, 1.5554.



This preview shows how white text looks on a background with the HunterLab color 65.3913, 23.5748,

1.5554.

Color Blindness Simulation

Color vision deficiency is a very complex topic, and I could not describe the different causes any better than Wikipedia does, so if you want to learn more, you should check out their [article about color blindness](#).

Dichromacy



Original Color

65.3913, 23.5748, 1.5554

Protanopia

65.5991, -0.5252, -4.1370

Deuteranopia

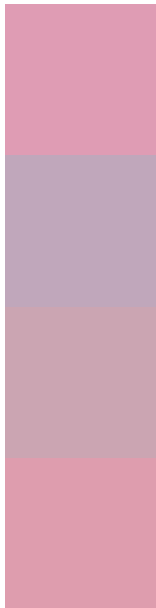
65.5745, 4.4626, 2.8762



Tritanopia

65.4871, 20.6121, 6.2823

Trichromacy



Original Color

65.3913, 23.5748, 1.5554

Protanomaly

65.1397, 8.0203, -2.5126

Deuteranomaly

65.4379, 11.2879, 2.3577

Tritanomaly

65.3449, 21.7409, 4.3119

Monochromacy



Original Color

65.3913, 23.5748, 1.5554

Achromatopsia

67.1406, -3.5825, 3.6479

Achromatomaly

66.3194, 5.6120, 2.8365

CSS Examples

Text

The CSS property to change the color of the text to HunterLab 65.3913, 23.5748, 1.5554 is called "color". The color property can be set on classes, ids or directly on the HTML element.

This example shows how text in the color `rgb(223, 156, 180)` looks like.

```
.text, #text, p{  
    color:rgb(223, 156, 180)  
}
```

If you want to add a text shadow in that color use the text-shadow property, you can generate a text shadow directly with our [CSS Text Shadow Generator](#).

Here you see how black text with a 4 pixel rgb(223, 156, 180) colored shadow looks like.

```
.shadow{ text-shadow: 4px 4px 2px rgb(223, 156, 180) }
```

Border

The CSS property to change the border of an element to HunterLab 65.3913, 23.5748, 1.5554 is called "border". The border property can be set on classes, ids or directly on the HTML element.

This example shows the color as border, it can be applied via the CSS property "border" or "border-color".

```
.border, #border, table{ border:4px solid rgb(223, 156, 180) }
```


If only the border color should be changed use the property `border-color`.

```
.border{ border-color:rgb(223, 156, 180) }
```

If you want to add a box shadow in that color use:

Here you see how a box with a 4 pixel `rgb(223, 156, 180)` colored shadow looks like.

```
.boxshadow{ -moz-box-shadow:4px 4px 4px  
4px rgb(223, 156, 180); -webkit-box-  
shadow:4px 4px 4px 4px rgb(223, 156, 180);  
box-shadow:4px 4px 4px 4px rgb(223, 156,  
180) }
```

Background

The CSS property to change the background color of an element to HunterLab 65.3913, 23.5748, 1.5554 is called "background". The background property can be set on classes, ids or directly on the HTML element.

```
.background, #background, body{  
background: rgb(223, 156, 180) }
```

If only the background color should be changed can be used:

```
.background{ background-color: rgb(223,  
156, 180) }
```

This example shows the color as background, it is applied via the CSS property "background".

To optimize and compress your CSS code, you can use our [online CSS compressor and optimizer](#) based on csstidy. If you want to create a linear or radial gradient as background or border, check our [CSS Gradient Generator](#).

Hey! You found this booklet interesting? Support Converting Colors with the new Membership Option!

The pro membership hides all ads, plus gives you double the colors in the color bucket, and more awesome pro features!

[Learn more, Memberships starting at \\$2.50/m!](#)

**Follow me
on Twitter!**

@ConvertingColor