

Converting Colors

HunterLab(65.4393, 3.4442,
5.8713)

Have a look what the booklet for
HunterLab(65.4393, 3.4442, 5.8713)
contains.

HunterLab(65.3667, 3.3479, 5.8425)	3
<i>Conversions</i>	4
<i>Details</i>	6
<i>Harmonies</i>	12
<i>Previews</i>	24
<i>Color Blindness Simulation</i>	28
<i>CSS Examples</i>	31

Color

**HunterLab(65.3667, 3.3479,
5.8425)**

Conversions

Conversions Part 1

Format	Color
Hex	BFAAAA
RGB	191, 170, 170
RGB Percent	75%, 67%, 67%
CMY	0.2510, 0.3333, 0.3333
CMYK	0.00, 0.11, 0.11, 0.25
HSL	0°, 14%, 71%
HSV	0°, 11%, 75%
XYZ	43.1163, 42.7281, 44.0050
YIQ	176.2790, 12.5160, 4.4520

Conversions

Conversions Part 2

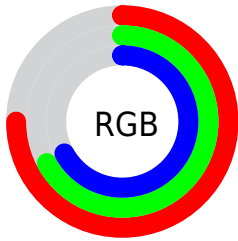
Format	Color
RYB	191, 170, 170
Decimal	12561066
CIELab	71.37, 7.59, 2.77
CIELCh	71, 8.076, 20.061
Yxy	42.7299, 0.3320, 0.3291
Android (android.graphics.Color)	4290751146 (0xFFBFAAAA)
YUV	176.2790, -3.0955, 12.9103
Hunter-Lab	65.3667, 3.3479, 5.8425

Details

The HunterLab color $65.3667, 3.3479, 5.8425$ is a light color, and the websafe version is hex 999999 . A complement of this color would be $70.4047, -10.1014, 1.6970$, and the grayscale version is $66.0165, -3.5225, 3.5868$.

A 20% lighter version of the original color is $88.9162, 2.7362, 7.3381$, and $44.2530, 3.4920, 4.3661$ is the 20% darker color. If you saturate the color by 10%, you get $59.5072, 10.1955, 7.7172$, and if you desaturate by 10%, it is $71.5499, -3.2139, 4.0900$.

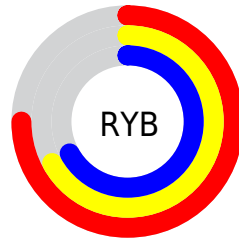
Distribution



Red (75%)

Green (67%)

Blue (67%)



Red (75%)

Yellow (67%)

Blue (67%)

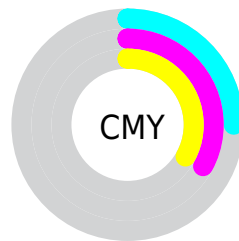


Cyan (0%)

Magenta (11%)

Yellow (11%)

Black (25%)



Cyan (25%)

Magenta (33%)

Yellow (33%)

Brightness & Saturation Gradients

These gradients show how the HunterLab color 65.3667, 3.3479, 5.8425 changes by changing the brightness by 10 percent. The first figure shows a shift by +10% for each color and the second figure -10%.

Similar to the brightness gradients but the following saturation gradients show a change of the HunterLab color 65.3667, 3.3479, 5.8425 by changing the saturation by 10% instead.

■ 65.3667, 3.3479,
5.8425

■ 65.3667, 3.3479,
5.8425

189.0767, -0.4554,
13.5789

■ 54.4732, 3.5414,
5.1106

■ 89.0523, 2.7951,
7.3896

■ 44.2614, 3.6757,
4.4051

101.7785, 2.4482,
8.2015

■ 34.7820, 3.7410,
3.7274

115.0589, 2.0583,
9.0384

■ 26.0967, 3.7263,
3.0772

128.8715, 1.6280,
9.8998

■ 18.2861, 3.6158,
2.4533

143.1965, 1.1596,
10.7851

■ 11.4619, 3.3850,
1.8519

158.0161, 0.6551,

■ 3.8963, 8.2754,

11.6938

2.7274

173.3143, 0.1163,
12.6252

0.0000, NaN, NaN

0.0000, NaN, NaN

■ 65.3667, 3.3479,
5.8425

■ 65.3667, 3.3479,
5.8425

■ 59.5072, 10.1955,
7.7172

■ 71.5499, -3.2139,
4.0900

■ 54.0261, 17.3361,
9.7156

■ 78.0058, -9.5093,
2.4447

■ 48.9984, 24.7191,
11.8278

■ 84.6990, -15.5735,
0.8939

■ 44.5139, 32.2039,
14.0129

■ 91.6000, -21.4409,
-0.5760

■ 40.6754, 39.5051,

■ 94.7716, -24.0319,

16.1828

-1.2105

■ 37.5884, 46.1576,
18.1889

■ 35.3373, 51.5613,
19.8364

■ 33.9494, 55.1716,
20.9447

■ 33.2823, 56.9918,
21.5062

Harmonies

Analogous

The Analogous color harmony consists of three colors that are next to each other on the color wheel.



65.3681, 3.6854, 2.3759



65.3667, 3.3479, 5.8425



65.3681, 1.1520, 8.5508

Triad

The Triadic color harmony groups three colors that are evenly spaced from another and form a triangle on the color wheel.



65.3681, 3.3460, 5.8436



65.3681, -8.8720, 7.7668



65.3681, -4.7182, -3.4859

Complementary

The Complementary color scheme is a pair of colors which are on the opposite of each other on the color wheel.



65.3667, 3.3479, 5.8425



70.4047, -10.1014, 1.6970

Split Complementary

Split-complementary colors differ from the complementary color scheme. The scheme consists of three colors, the original color and two neighbors of the complement color.



65.3681, -8.0087, -1.8622



65.3667, 3.3479, 5.8425



65.3681, -10.3713, 4.7188

Square

The Square scheme is like the rectangle color scheme, but the four colors are evenly spaced on the color wheel.



65.3681, 3.3460, 5.8436



65.3681, -5.9206, 9.6175



65.3681, -10.0588, 1.1871



65.3681, -1.0261, -3.1432

Rectangle

The Rectangle color scheme consists of four colors that form a rectangle on the color wheel.



65.3667, 3.3479, 5.8425



65.3681, -1.0406, 9.6219



65.3681, -10.0588, 1.1871



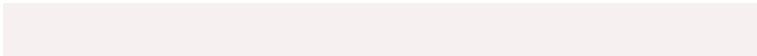
65.3681, -5.9066, -3.1486

Sweetspot

The Sweet Spot groups the original color and five complimentary colors.



65.3681, 3.3460, 5.8436



94.0236, -2.5291, 5.9429



66.0212, 6.8450, -3.4635



43.7409, -0.8544, 2.8728



98.8636, -5.2751, 5.3714



45.2661, -2.4153, 2.4594

Same Dimension

The Same Dimension uses a secret algorithm to generate beautiful new colors.



65.3681, 3.3460, 5.8436



85.7069, 6.4707, 8.3605



68.4280, -1.9340, 9.1791



30.8814, 1.0444, 2.5808



26.9811, 46.2007, 17.4345



5.3408, 9.1411, 3.4510

Inverse Universe

The Inverse Universe completely reimagines the original color for something new.



70.4047, -10.1014, 1.6970



93.7796, -15.0966, 1.7098



67.1960, -4.9493, -2.1722



32.8775, -4.2829, 0.9381



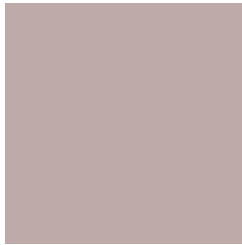
51.9145, -27.5171, -5.4872



10.2751, -5.4466, -1.0854

Previews

White Background



This preview shows how the HunterLab color 65.3667, 3.3479, 5.8425 looks on a white background.

Color Contrast Check

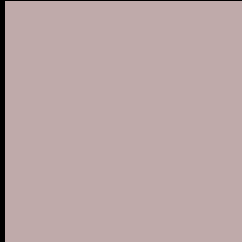
Large Text (above 18pt) WCAG AA × Fail

Any Text WCAG AA × Fail

Large Text (above 18pt) WCAG AAA × Fail

Any Text WCAG AAA × Fail

Black Background



This preview shows how the HunterLab color 65.3667, 3.3479, 5.8425 looks on a black background.

Color Contrast Check

Large Text (above 18pt) WCAG AA ✓ Pass

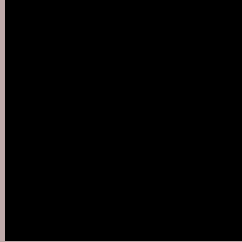
Any Text WCAG AA ✓ Pass

Large Text (above 18pt) WCAG AAA ✓ Pass

Any Text WCAG AAA ✓ Pass

If you want to check with other color combinations, try the [Color Contrast Checker](#).

HunterLab 65.3667, 3.3479, 5.8425 Background



This preview shows how black text looks on a background with the HunterLab color 65.3667, 3.3479, 5.8425.



This preview shows how white text looks on a background with the HunterLab color 65.3667, 3.3479,

Color Blindness Simulation

Color vision deficiency is a very complex topic, and I could not describe the different causes any better than Wikipedia does, so if you want to learn more, you should check out their [article about color blindness](#).

Dichromacy



Original Color

65.3667, 3.3479, 5.8425

Protanopia

65.3572, -2.5551, 4.8215

Deuteranopia

65.2807, 4.5278, 5.7647



Tritanopia

65.3291, 6.8127, 0.6999

Trichromacy



Original Color

65.3667, 3.3479, 5.8425

Protanomaly

65.4940, -0.6294, 5.4677

Deuteranomaly

65.1803, 4.1907, 5.6437

Tritanomaly

65.3886, 5.3058, 2.6695

Monochromacy



Original Color

65.3667, 3.3479, 5.8425

Achromatopsia

65.8903, -3.5157, 3.5799

Achromatomaly

65.6901, -1.2871, 4.3124

CSS Examples

Text

The CSS property to change the color of the text to HunterLab 65.3667, 3.3479, 5.8425 is called "color". The color property can be set on classes, ids or directly on the HTML element.

This example shows how text in the color `rgb(191, 170, 170)` looks like.

```
.text, #text, p{  
    color:rgb(191, 170, 170)  
}
```

If you want to add a text shadow in that color use the text-shadow property, you can generate a text shadow directly with our [CSS Text Shadow Generator](#).

Here you see how black text with a 4 pixel rgb(191, 170, 170) colored shadow looks like.

```
.shadow{ text-shadow: 4px 4px 2px rgb(191, 170, 170) }
```

Border

The CSS property to change the border of an element to HunterLab 65.3667, 3.3479, 5.8425 is called "border".

The border property can be set on classes, ids or directly on the HTML element.

This example shows the color as border, it can be applied via the CSS property "border" or "border-color".

```
.border, #border, table{ border:4px solid rgb(191, 170, 170) }
```


If only the border color should be changed use the property `border-color`.

```
.border{ border-color:rgb(191, 170, 170) }
```

If you want to add a box shadow in that color use:

Here you see how a box with a 4 pixel `rgb(191, 170, 170)` colored shadow looks like.

```
.boxshadow{ -moz-box-shadow:4px 4px 4px  
4px rgb(191, 170, 170); -webkit-box-  
shadow:4px 4px 4px 4px rgb(191, 170, 170);  
box-shadow:4px 4px 4px 4px rgb(191, 170,  
170) }
```

Background

The CSS property to change the background color of an element to HunterLab 65.3667, 3.3479, 5.8425 is called "background". The background property can be set on classes, ids or directly on the HTML element.

```
.background, #background, body{  
background: rgb(191, 170, 170) }
```

If only the background color should be changed can be used:

```
.background{ background-color: rgb(191,  
170, 170) }
```

This example shows the color as background, it is applied via the CSS property "background".

To optimize and compress your CSS code, you can use our [online CSS compressor and optimizer](#) based on csstidy. If you want to create a linear or radial gradient as background or border, check our [CSS Gradient Generator](#).

Hey! You found this booklet interesting? Support Converting Colors with the new Membership Option!

The pro membership hides all ads, plus gives you double the colors in the color bucket, and more awesome pro features!

[Learn more, Memberships starting at \\$2.50/m!](#)

**Follow me
on Twitter!**

@ConvertingColor