

Converting Colors

HunterLab(65.5646, 1.7536,
9.7757)

Have a look what the booklet for
HunterLab(65.5646, 1.7536, 9.7757)
contains.

HunterLab(65.5023, 1.8257, 9.8738)	3
<i>Conversions</i>	4
<i>Details</i>	6
<i>Harmonies</i>	12
<i>Previews</i>	24
<i>Color Blindness Simulation</i>	28
<i>CSS Examples</i>	31

Color

**HunterLab(65.5023, 1.8257,
9.8738)**

Conversions

Conversions Part 1

Format	Color
Hex	C0ABA1
RGB	192, 171, 161
RGB Percent	75%, 67%, 63%
CMY	0.2471, 0.3294, 0.3686
CMYK	0.00, 0.11, 0.16, 0.25
HSL	19°, 20%, 69%
HSV	19°, 16%, 75%
XYZ	42.7342, 42.9055, 39.7475
YIQ	176.1390, 15.7260, 1.3420

Conversions

Conversions Part 2

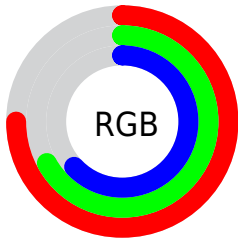
Format	Color
R_{YB}	192, 176, 161
Decimal	12626849
CIE _{Lab}	71.49, 5.93, 7.91
CIE _{LCh}	71, 9.884, 53.156
Yxy	42.9074, 0.3408, 0.3422
Android (android.graphics.Color)	4290816929 (0xFFC0ABA1)
YUV	176.1390, -7.4635, 13.9101
Hunter-Lab	65.5023, 1.8257, 9.8738

Details

The HunterLab color $65.5023, 1.8257, 9.8738$ is a light color, and the websafe version is hex 999999 . A complement of this color would be $66.9610, -8.0465, -3.0363$, and the grayscale version is $65.9749, -3.5203, 3.5845$.

A 20% lighter version of the original color is $89.1573, 1.4540, 11.7613$, and $44.4103, 2.2369, 7.7101$ is the 20% darker color. If you saturate the color by 10%, you get $61.3249, 5.7133, 13.2217$, and if you desaturate by 10%, it is $69.8533, -1.7849, 6.2703$.

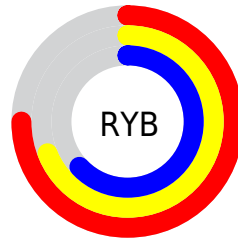
Distribution



Red (75%)

Green (67%)

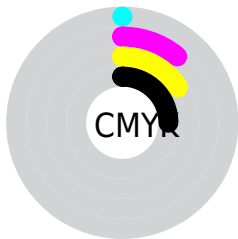
Blue (63%)



Red (75%)

Yellow (69%)

Blue (63%)

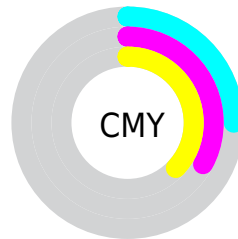


Cyan (0%)

Magenta (11%)

Yellow (16%)

Black (25%)



Cyan (25%)

Magenta (33%)

Yellow (37%)

Brightness & Saturation Gradients

These gradients show how the HunterLab color 65.5023, 1.8257, 9.8738 changes by changing the brightness by 10 percent. The first figure shows a shift by +10% for each color and the second figure -10%.

Similar to the brightness gradients but the following saturation gradients show a change of the HunterLab color 65.5023, 1.8257, 9.8738 by changing the saturation by 10% instead.

■ 65.5023, 1.8257,
9.8738

■ 65.5023, 1.8257,
9.8738

189.2699, -2.5884,
19.5342

■ 54.6008, 2.1028,
8.8690

■ 89.2027, 1.1178,
11.9185

■ 44.3805, 2.3259,
7.8700

■ 101.9356, 0.6986,
12.9601

■ 34.8919, 2.4861,
6.8727

115.2227, 0.2392,
14.0162

■ 26.1966, 2.5740,
5.8687

129.0416, -0.2581,
15.0877

■ 18.3748, 2.5758,
4.8436

143.3726, -0.7911,
16.1750

■ 11.5378, 2.4702,
3.7997

158.1981, -1.3582,

■ 4.0643, 6.1372,

17.2784

2.8450

173.5020, -1.9577,
18.3981

0.0000, NaN, NaN

0.0000, NaN, NaN

■ 65.5023, 1.8257,
9.8738

■ 65.5023, 1.8257,
9.8738

■ 61.3249, 5.7133,
13.2217

■ 69.8533, -1.7849,
6.2703

■ 57.3379, 9.9053,
16.2629

■ 74.3554, -5.1375,
2.4473

■ 53.5670, 14.4132,
18.9400

■ 78.9949, -8.2595,
-1.5627

■ 50.0405, 19.2351,
21.1846

■ 83.7586, -11.1756,
-5.7346

■ 46.7898, 24.3442,

■ 88.5621, -14.3168,

22.9206

-9.0165

■ 43.8489, 29.6756,
24.0718

■ 92.8422, -20.8279,
-3.5732

■ 41.2523, 35.1124,
24.5784

■ 94.8402, -23.7796,
-1.1209

■ 39.0302, 40.4719,
24.4359

■ 38.2717, 42.4365,
24.3258

Harmonies

Analogous

The Analogous color harmony consists of three colors that are next to each other on the color wheel.



65.5038, 4.7305, 6.7507



65.5023, 1.8257, 9.8738



65.5038, -2.4541, 11.2932

Triad

The Triadic color harmony groups three colors that are evenly spaced from another and form a triangle on the color wheel.



65.5038, 1.8237, 9.8748



65.5038, -11.9505, 4.5483



65.5038, -0.0270, -4.5466

Complementary

The Complementary color scheme is a pair of colors which are on the opposite of each other on the color wheel.



65.5023, 1.8257, 9.8738



66.9610, -8.0465, -3.0363

Split Complementary

Split-complementary colors differ from the complementary color scheme. The scheme consists of three colors, the original color and two neighbors of the complement color.



65.5038, -4.5366, -5.2359



65.5023, 1.8257, 9.8738



65.5038, -11.3405, 0.2120

Square

The Square scheme is like the rectangle color scheme, but the four colors are evenly spaced on the color wheel.



65.5038, 1.8237, 9.8748



65.5038, -10.3457, 8.3565



65.5038, -8.6563, -3.4413



65.5038, 3.6418, -1.6171

Rectangle

The Rectangle color scheme consists of four colors that form a rectangle on the color wheel.



65.5023, 1.8257, 9.8738



65.5038, -5.4756, 11.1541



65.5038, -8.6563, -3.4413



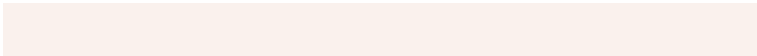
65.5038, -1.4980, -5.0558

Sweetspot

The Sweet Spot groups the original color and five complimentary colors.



65.5038, 1.8237, 9.8748



94.6643, -2.8992, 7.9053



63.3102, 10.2915, -2.3477



43.6503, -1.1901, 3.8265



98.8636, -5.2751, 5.3714



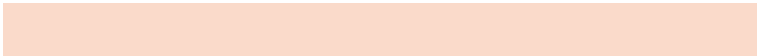
45.2661, -2.4153, 2.4594

Same Dimension

The Same Dimension uses a secret algorithm to generate beautiful new colors.



65.5038, 1.8237, 9.8748



86.3703, 4.0665, 14.7558



70.0225, -5.7936, 14.4955



32.5527, -0.3088, 3.5485



31.5952, 34.2454, 20.0684



7.4718, 4.7999, 4.6881

Inverse Universe

The Inverse Universe completely reimagines the original color for something new.



66.9610, -8.0465, -3.0363



88.7053, -11.7627, -5.9424



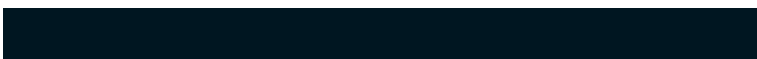
62.3739, -0.4820, -8.9779



32.9586, -3.0546, -0.0451



36.6843, -6.5352, -31.7446



8.3781, -2.4694, -5.1412

Previews

White Background



This preview shows how the HunterLab color 65.5023, 1.8257, 9.8738 looks on a white background.

Color Contrast Check

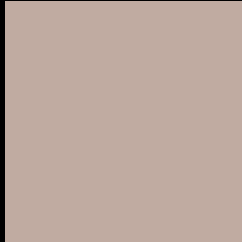
Large Text (above 18pt) WCAG AA × Fail

Any Text WCAG AA × Fail

Large Text (above 18pt) WCAG AAA × Fail

Any Text WCAG AAA × Fail

Black Background



This preview shows how the HunterLab color 65.5023, 1.8257, 9.8738 looks on a black background.

Color Contrast Check

Large Text (above 18pt) WCAG AA ✓ Pass

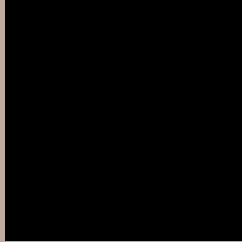
Any Text WCAG AA ✓ Pass

Large Text (above 18pt) WCAG AAA ✓ Pass

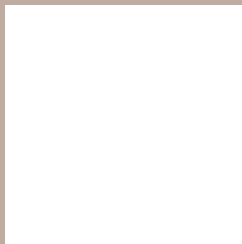
Any Text WCAG AAA ✓ Pass

If you want to check with other color combinations, try the [Color Contrast Checker](#).

HunterLab 65.5023, 1.8257, 9.8738 Background



This preview shows how black text looks on a background with the HunterLab color 65.5023, 1.8257, 9.8738.



This preview shows how white text looks on a background with the HunterLab color 65.5023, 1.8257,

9.8738.

Color Blindness Simulation

Color vision deficiency is a very complex topic, and I could not describe the different causes any better than Wikipedia does, so if you want to learn more, you should check out their [article about color blindness](#).

Dichromacy



Original Color

65.5023, 1.8257, 9.8738

Protanopia

65.6719, -3.4941, 9.1225

Deuteranopia

65.4366, 4.5475, 9.8503



Tritanopia

65.5313, 7.4832, 0.9587

Trichromacy



Original Color

65.5023, 1.8257, 9.8738

Protanomaly

65.7229, -1.8546, 9.6290

Deuteranomaly

65.5170, 3.3520, 9.9164

Tritanomaly

65.4991, 5.4941, 4.2080

Monochromacy



Original Color

65.5023, 1.8257, 9.8738

Achromatopsia

65.8903, -3.5157, 3.5799

Achromatomaly

65.6943, -1.4485, 5.6831

CSS Examples

Text

The CSS property to change the color of the text to HunterLab 65.5023, 1.8257, 9.8738 is called "color". The color property can be set on classes, ids or directly on the HTML element.

This example shows how text in the color `rgb(192, 171, 161)` looks like.

```
.text, #text, p{  
    color:rgb(192, 171, 161)  
}
```

If you want to add a text shadow in that color use the text-shadow property, you can generate a text shadow directly with our [CSS Text Shadow Generator](#).

Here you see how black text with a 4 pixel rgb(192, 171, 161) colored shadow looks like.

```
.shadow{ text-shadow: 4px 4px 2px rgb(192, 171, 161) }
```

Border

The CSS property to change the border of an element to HunterLab 65.5023, 1.8257, 9.8738 is called "border".

The border property can be set on classes, ids or directly on the HTML element.

This example shows the color as border, it can be applied via the CSS property "border" or "border-color".

```
.border, #border, table{ border:4px solid rgb(192, 171, 161) }
```


If only the border color should be changed use the property `border-color`.

```
.border{ border-color:rgb(192, 171, 161) }
```

If you want to add a box shadow in that color use:

Here you see how a box with a 4 pixel `rgb(192, 171, 161)` colored shadow looks like.

```
.boxshadow{ -moz-box-shadow:4px 4px 4px  
4px rgb(192, 171, 161); -webkit-box-  
shadow:4px 4px 4px 4px rgb(192, 171, 161);  
box-shadow:4px 4px 4px 4px rgb(192, 171,  
161) }
```

Background

The CSS property to change the background color of an element to HunterLab 65.5023, 1.8257, 9.8738 is called "background". The background property can be set on classes, ids or directly on the HTML element.

```
.background, #background, body{  
background: rgb(192, 171, 161) }
```

If only the background color should be changed can be used:

```
.background{ background-color: rgb(192,  
171, 161) }
```

This example shows the color as background, it is applied via the CSS property "background".

To optimize and compress your CSS code, you can use our [online CSS compressor and optimizer](#) based on csstidy. If you want to create a linear or radial gradient as background or border, check our [CSS Gradient Generator](#).

Hey! You found this booklet interesting? Support Converting Colors with the new Membership Option!

The pro membership hides all ads, plus gives you double the colors in the color bucket, and more awesome pro features!

[Learn more, Memberships starting at \\$2.50/m!](#)

**Follow me
on Twitter!**

@ConvertingColor