

# Converting Colors

HunterLab(65.7673, 6.2543,  
13.4662)

Have a look what the booklet for  
HunterLab(65.7673, 6.2543,  
13.4662) contains.

<b>HunterLab(65.6830, 6.4071, 13.3820)</b> .....	3
<b><i>Conversions</i></b> .....	4
<b><i>Details</i></b> .....	6
<b><i>Harmonies</i></b> .....	12
<b><i>Previews</i></b> .....	24
<b><i>Color Blindness Simulation</i></b> .....	28
<b><i>CSS Examples</i></b> .....	31

# Color

**HunterLab(65.6830, 6.4071,  
13.3820)**

# Conversions

## Conversions Part 1

<b>Format</b>	<b>Color</b>
Hex	CCA899
RGB	204, 168, 153
RGB Percent	80%, 66%, 60%
CMY	0.2000, 0.3412, 0.4000
CMYK	0.00, 0.18, 0.25, 0.20
HSL	18°, 33%, 70%
HSV	18°, 25%, 80%
XYZ	44.6543, 43.1426, 36.1108
YIQ	177.0540, 26.2710, 2.9670

# Conversions

## Conversions Part 2

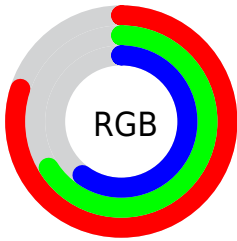
Format	Color
R <sub>Y</sub> B	204, 174, 153
Decimal	13412505
CIE Lab	71.65, 10.89, 12.69
CIE LCh	72, 16.717, 49.368
Yxy	43.1445, 0.3604, 0.3482
Android (android.graphics.Color)	4291602585 (0xFFCCA899)
YUV	177.0540, -11.8586, 23.6316
Hunter-Lab	65.6830, 6.4071, 13.3820

# Details

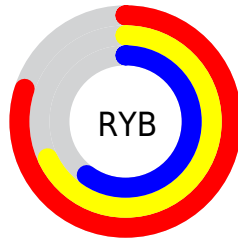
The HunterLab color **65.6830, 6.4071, 13.3820** is a light color, and the websafe version is hex **CC9999**. A complement of this color would be **68.9390, -11.2912, -6.8491**, and the grayscale version is **66.3705, -3.5414, 3.6060**.

A 20% lighter version of the original color is **88.6230, 3.8064, 15.1828**, and **44.5417, 6.3617, 10.8252** is the 20% darker color. If you saturate the color by 10%, you get **61.2385, 11.1718, 16.5857**, and if you desaturate by 10%, it is **70.3502, 1.9620, 9.8924**.

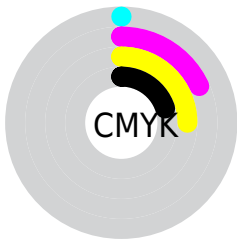
# Distribution



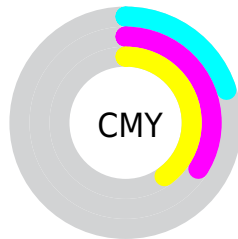
- Red (80%)
- Green (66%)
- Blue (60%)



- Red (80%)
- Yellow (68%)
- Blue (60%)



- Cyan (0%)
- Magenta (18%)
- Yellow (25%)
- Black (20%)



- Cyan (20%)
- Magenta (34%)
- Yellow (40%)

# Brightness & Saturation Gradients

These gradients show how the HunterLab color 65.6830, 6.4071, 13.3820 changes by changing the brightness by 10 percent. The first figure shows a shift by +10% for each color and the second figure -10%.

Similar to the brightness gradients but the following saturation gradients show a change of the HunterLab color 65.6830, 6.4071, 13.3820 by changing the saturation by 10% instead.



65.6830, 6.4071,  
13.3820

65.6830, 6.4071,  
13.3820

189.5273, 3.7868,  
24.8986

54.7709, 6.4394,  
12.1104

89.4030, 6.1527,  
15.9107

44.5393, 6.4038,  
10.8229

102.1451, 5.9458,  
17.1746

35.0385, 6.2882,  
9.5097

115.4408, 5.6906,  
18.4425

26.3298, 6.0794,  
8.1539

129.2681, 5.3901,  
19.7164

18.4932, 5.7587,  
6.7271

143.6072, 5.0473,  
20.9978

11.6393, 5.2981,  
5.5104

158.4405, 4.6644,

4.2778, 10.8605,

22.2881

2.9944

173.7520, 4.2437,  
23.5881

0.0000, NaN, NaN

0.0000, NaN, NaN

■ 65.6830, 6.4071,  
13.3820

■ 65.6830, 6.4071,  
13.3820

■ 61.2385, 11.1718,  
16.5857

■ 70.3502, 1.9620,  
9.8924

■ 57.0416, 16.2761,  
19.4391

■ 75.2105, -2.1798,  
6.1632

■ 53.1280, 21.7119,  
21.8685

■ 80.2439, -6.0482,  
2.2345

■ 49.5363, 27.4414,  
23.7884

■ 85.4326, -9.6717,  
-1.8632

■ 46.3083, 33.3788,

■ 90.7612, -13.0776,

25.1092

-6.1051

■ 43.4867, 39.3734,  
25.7555

■ 95.4947, -20.3461,  
-0.2521

■ 41.1095, 45.1982,  
25.7002

■ 95.6961, -20.6483,  
-0.0097

■ 40.0885, 47.9235,  
25.5413

# Harmonies

## Analogous

The Analogous color harmony consists of three colors that are next to each other on the color wheel.



65.6845, 11.0377, 8.0728



65.6830, 6.4071, 13.3820



65.6845, -0.7566, 15.9563

# Triad

The Triadic color harmony groups three colors that are evenly spaced from another and form a triangle on the color wheel.



65.6845, 6.4048, 13.3830



65.6845, -17.4237, 6.1191



65.6845, 1.4696, -11.1335

# Complementary

The Complementary color scheme is a pair of colors which are on the opposite of each other on the color wheel.



65.6830, 6.4071, 13.3820



68.9390, -11.2912, -6.8491

# Split Complementary

Split-complementary colors differ from the complementary color scheme. The scheme consists of three colors, the original color and two neighbors of the complement color.



65.6845, -6.2154, -11.8127



65.6830, 6.4071, 13.3820



65.6845, -16.8892, -1.2644

# Square

The Square scheme is like the rectangle color scheme, but the four colors are evenly spaced on the color wheel.



65.6845, 6.4048, 13.3830



65.6845, -14.3616, 12.0946



65.6845, -12.8663, -8.0252



65.6845, 8.0989, -6.2640



# Rectangle

The Rectangle color scheme consists of four colors that form a rectangle on the color wheel.



65.6830, 6.4071, 13.3820



65.6845, -5.8987, 15.9992



65.6845, -12.8663, -8.0252



65.6845, -1.0832, -11.8790

# Sweetspot

The Sweet Spot groups the original color and five complimentary colors.



65.6845, 6.4048, 13.3830



95.4603, -1.7206, 8.9580



62.7044, 19.9017, -6.8329



43.9856, -0.6480, 4.2822

0.0000, NaN, NaN



46.2646, -2.4686, 2.5136



# Same Dimension

The Same Dimension uses a secret algorithm to generate beautiful new colors.



65.6845, 6.4048, 13.3830



81.4068, 11.4964, 19.4953



72.9764, -6.1159, 20.3752



34.2674, -0.1850, 3.6726



32.0264, 37.3772, 20.3888



8.1365, 6.1893, 5.1220



# Inverse Universe

The Inverse Universe completely reimagines the original color for something new.



68.9390, -11.2912, -6.8491



86.4499, -16.0012, -11.8950



61.4014, 1.0431, -17.3091



34.8538, -3.3594, 0.0344



39.3236, -8.8085, -30.1360



9.6192, -2.9947, -5.5585



# Previews

## White Background



This preview shows how the HunterLab color 65.6830, 6.4071, 13.3820 looks on a white background.

## Color Contrast Check

Large Text (above 18pt) WCAG AA × Fail

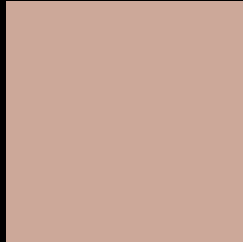
Any Text WCAG AA × Fail

Large Text (above 18pt) WCAG AAA × Fail

Any Text WCAG AAA × Fail



# Black Background



This preview shows how the HunterLab color 65.6830, 6.4071, 13.3820 looks on a black background.

## Color Contrast Check

Large Text (above 18pt) WCAG AA ✓ Pass

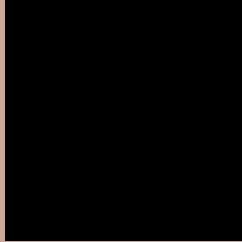
Any Text WCAG AA ✓ Pass

Large Text (above 18pt) WCAG AAA ✓ Pass

Any Text WCAG AAA ✓ Pass

If you want to check with other color combinations, try the [Color Contrast Checker](#).

## HunterLab 65.6830, 6.4071, 13.3820 Background



This preview shows how black text looks on a background with the HunterLab color 65.6830, 6.4071, 13.3820.



This preview shows how white text looks on a background with the HunterLab color 65.6830, 6.4071,



# Color Blindness Simulation

Color vision deficiency is a very complex topic, and I could not describe the different causes any better than Wikipedia does, so if you want to learn more, you should check out their [article about color blindness](#).

## Dichromacy



### Original Color

65.6830, 6.4071, 13.3820

### Protanopia

65.6974, -3.7251, 11.6300

### Deuteranopia

65.6455, 4.8312, 13.3158



## Tritanopia

65.5672, 13.0558, 3.0180

# Trichromacy



## Original Color

65.6830, 6.4071, 13.3820

## Protanomaly

65.5604, 0.2728, 11.9586

## Deuteranomaly

65.7513, 5.1856, 13.4310

## Tritanomaly

65.4670, 10.7911, 6.9789

# Monochromacy



## Original Color

65.6830, 6.4071, 13.3820

## Achromatopsia

66.3066, -3.5380, 3.6026

## Achromatomaly

66.0788, -0.2983, 7.4724

# CSS Examples

## Text

The CSS property to change the color of the text to HunterLab 65.6830, 6.4071, 13.3820 is called "color". The color property can be set on classes, ids or directly on the HTML element.

This example shows how text in the color `rgb(204, 168, 153)` looks like.

```
.text, #text, p{  
    color:rgb(204, 168, 153)  
}
```

If you want to add a text shadow in that color use the text-shadow property, you can generate a text shadow directly with our [CSS Text Shadow Generator](#).

Here you see how black text with a 4 pixel rgb(204, 168, 153) colored shadow looks like.

```
.shadow{ text-shadow: 4px 4px 2px rgb(204, 168, 153) }
```

## Border

The CSS property to change the border of an element to HunterLab 65.6830, 6.4071, 13.3820 is called "border". The border property can be set on classes, ids or directly on the HTML element.

This example shows the color as border, it can be applied via the CSS property "border" or "border-color".

```
.border, #border, table{ border:4px solid rgb(204, 168, 153) }
```



If only the border color should be changed use the property `border-color`.

```
.border{ border-color:rgb(204, 168, 153) }
```

If you want to add a box shadow in that color use:

Here you see how a box with a 4 pixel `rgb(204, 168, 153)` colored shadow looks like.

```
.boxshadow{ -moz-box-shadow:4px 4px 4px  
4px rgb(204, 168, 153); -webkit-box-  
shadow:4px 4px 4px 4px rgb(204, 168, 153);  
box-shadow:4px 4px 4px 4px rgb(204, 168,  
153) }
```

# Background

The CSS property to change the background color of an element to HunterLab 65.6830, 6.4071, 13.3820 is called "background". The background property can be set on classes, ids or directly on the HTML element.

```
.background, #background, body{  
background: rgb(204, 168, 153) }
```

If only the background color should be changed can be used:

```
.background{ background-color: rgb(204,  
168, 153) }
```

This example shows the color as background, it is applied via the CSS property "background".

To optimize and compress your CSS code, you can use our [online CSS compressor and optimizer](#) based on csstidy. If you want to create a linear or radial gradient as background or border, check our [CSS Gradient Generator](#).

Hey! You found this booklet interesting? Support Converting Colors with the new Membership Option!

The pro membership hides all ads, plus gives you double the colors in the color bucket, and more awesome pro features!

**[Learn more, Memberships starting at \\$2.50/m!](#)**

**Follow me  
on Twitter!**

@ConvertingColor