

# Converting Colors

HunterLab(65.9124, 6.1938,  
4.6533)

Have a look what the booklet for  
HunterLab(65.9124, 6.1938, 4.6533)  
contains.

<b>HunterLab(65.8044, 6.5122, 4.5823)</b> .....	3
<i><b>Conversions</b></i> .....	4
<i><b>Details</b></i> .....	6
<i><b>Harmonies</b></i> .....	12
<i><b>Previews</b></i> .....	24
<i><b>Color Blindness Simulation</b></i> .....	28
<i><b>CSS Examples</b></i> .....	31

# Color

**HunterLab(65.8044, 6.5122,  
4.5823)**

# Conversions

## Conversions Part 1

Format	Color
Hex	C5A9AE
RGB	197, 169, 174
RGB Percent	77%, 66%, 68%
CMY	0.2274, 0.3372, 0.3176
CMYK	0.00, 0.14, 0.12, 0.23
HSL	349°, 19%, 72%
HSV	349°, 14%, 77%
XYZ	44.8539, 43.3022, 46.0384
YIQ	177.9420, 15.0830, 7.4910

# Conversions

## Conversions Part 2

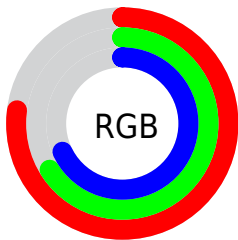
<b>Format</b>	<b>Color</b>
<b>RYB</b>	197, 169, 174
Decimal	12954030
CIELab	71.76, 11.00, 1.20
CIElCh	72, 11.064, 6.218
Yxy	43.3041, 0.3342, 0.3227
Android (android.graphics.Color)	4291144110 (0xFFC5A9AE)
YUV	177.9420, -1.9434, 16.7139
Hunter-Lab	65.8044, 6.5122, 4.5823

# Details

The HunterLab color  $65.8044, 6.5122, 4.5823$  is a light color, and the websafe version is hex  $CC9999$ . A complement of this color would be  $72.2318, -13.1142, 3.3431$ , and the grayscale version is  $66.7038, -3.5592, 3.6241$ .

A 20% lighter version of the original color is  $89.4647, 6.3880, 6.1130$ , and  $44.6849, 6.4953, 3.2179$  is the 20% darker color. If you saturate the color by 10%, you get  $59.9367, 14.1697, 5.2638$ , and if you desaturate by 10%, it is  $72.0170, -0.9238, 4.1668$ .

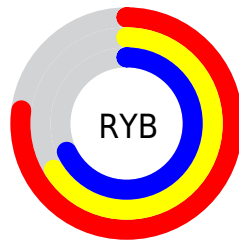
# Distribution



Red (77%)

Green (66%)

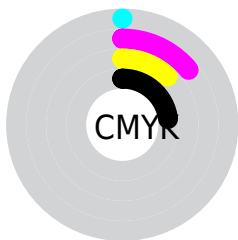
Blue (68%)



Red (77%)

Yellow (66%)

Blue (68%)

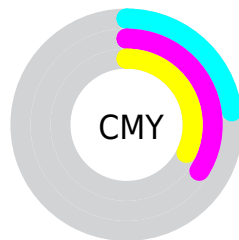


Cyan (0%)

Magenta (14%)

Yellow (12%)

Black (23%)



Cyan (23%)

Magenta (34%)


Yellow (32%)

# Brightness & Saturation Gradients

These gradients show how the HunterLab color 65.8044, 6.5122, 4.5823 changes by changing the brightness by 10 percent. The first figure shows a shift by +10% for each color and the second figure -10%.


Similar to the brightness gradients but the following saturation gradients show a change of the HunterLab color 65.8044, 6.5122, 4.5823 by changing the saturation by 10% instead.





 65.8044, 6.5122,  
4.5823

 65.8044, 6.5122,  
4.5823


189.7000, 3.9285,  
11.7569

 54.8852, 6.5401,  
3.9292


 89.5375, 6.2672,  
5.9851

 44.6459, 6.4994,  
3.3081


 102.2856, 6.0646,  
6.7301

 35.1369, 6.3785,  
2.7217


115.5873, 5.8134,  
7.5030

 26.4193, 6.1642,  
2.1719

129.4202, 5.5169,  
8.3030

 18.5728, 5.8378,  
1.6610

143.7647, 5.1779,  
9.1291

 11.7075, 5.3711,  
1.1909

158.6032, 4.7989,

 4.4152, 10.6197,

9.9806

1.3655

173.9198, 4.3818,  
10.8567

0.0000, NaN, NaN

0.0000, NaN, NaN

■ 65.8044, 6.5122,  
4.5823

■ 65.8044, 6.5122,  
4.5823

■ 59.9367, 14.1697,  
5.2638

■ 72.0170, -0.9238,  
4.1668

■ 54.4726, 22.0219,  
6.2541

■ 78.5201, -8.1355,  
3.9715

■ 49.4912, 29.9667,  
7.5972

■ 85.2752, -15.1448,  
3.9613

■ 45.0856, 37.7924,  
9.3188

■ 92.2507, -21.9776,  
4.1058

■ 41.3592, 45.1304,

■ 95.1869, -22.5128,

11.4033

-0.6289

■ 38.4127, 51.4472,  
13.7631

■ 95.1895, -22.4979,  
-0.6662

■ 36.3176, 56.1407,  
16.2205

■ 35.0785, 58.7804,  
18.5283

■ 34.6305, 59.6589,  
19.6401

# Harmonies

## Analogous

The Analogous color harmony consists of three colors that are next to each other on the color wheel.



65.8059, 5.6922, -0.2880



65.8044, 6.5122, 4.5823



65.8059, 4.5769, 8.8539

# Triad

The Triadic color harmony groups three colors that are evenly spaced from another and form a triangle on the color wheel.



65.8059, 6.5102, 4.5834



65.8059, -9.2038, 10.6657



65.8059, -7.4189, -5.5294

# Complementary

The Complementary color scheme is a pair of colors which are on the opposite of each other on the color wheel.



65.8044, 6.5122, 4.5823



72.2318, -13.1142, 3.3431

# Split Complementary

Split-complementary colors differ from the complementary color scheme. The scheme consists of three colors, the original color and two neighbors of the complement color.



65.8059, -11.2334, -2.1658



65.8044, 6.5122, 4.5823



65.8059, -12.2418, 7.2303

# Square

The Square scheme is like the rectangle color scheme, but the four colors are evenly spaced on the color wheel.



65.8059, 6.5102, 4.5834



65.8059, -4.5725, 12.1893



65.8059, -12.9734, 2.5646



65.8059, -2.4503, -6.3723



# Rectangle

The Rectangle color scheme consists of four colors that form a rectangle on the color wheel.



65.8044, 6.5122, 4.5823



65.8059, 2.0216, 10.8666



65.8059, -12.9734, 2.5646



65.8059, -8.8739, -4.6442

# Sweetspot

The Sweet Spot groups the original color and five complimentary colors.



65.8059, 6.5102, 4.5834



96.5069, -1.3831, 5.5704



66.0289, 8.7278, -6.5931



44.3479, -0.2934, 2.5915

0.0000, NaN, NaN



46.2646, -2.4686, 2.5136



# Same Dimension

The Same Dimension uses a secret algorithm to generate beautiful new colors.



65.8059, 6.5102, 4.5834



85.6195, 11.8075, 6.3714



68.2087, 1.2314, 9.4214



32.6609, 1.3756, 2.0673



28.1016, 48.4427, 15.6944



6.1940, 10.8328, 2.2550



# Inverse Universe

The Inverse Universe completely reimagines the original color for something new.



65.8059, 6.5102, 4.5834



85.6195, 11.8075, 6.3714



69.6355, -7.9126, -2.2054



32.6609, 1.3756, 2.0673



28.1016, 48.4427, 15.6944

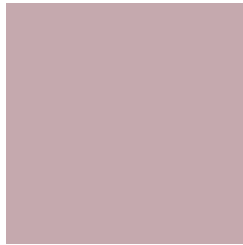


6.1940, 10.8328, 2.2550



# Previews

## White Background



This preview shows how the HunterLab color 65.8044, 6.5122, 4.5823 looks on a white background.

## Color Contrast Check

Large Text (above 18pt) WCAG AA × Fail

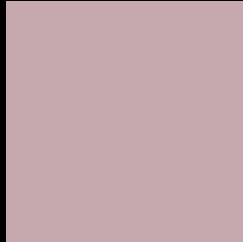
Any Text WCAG AA × Fail

Large Text (above 18pt) WCAG AAA × Fail

Any Text WCAG AAA × Fail



# Black Background



This preview shows how the HunterLab color 65.8044, 6.5122, 4.5823 looks on a black background.

## Color Contrast Check

Large Text (above 18pt) WCAG AA ✓ Pass

Any Text WCAG AA ✓ Pass

Large Text (above 18pt) WCAG AAA ✓ Pass

Any Text WCAG AAA ✓ Pass

If you want to check with other color combinations, try the [Color Contrast Checker](#).

## HunterLab 65.8044, 6.5122, 4.5823 Background



This preview shows how black text looks on a background with the HunterLab color 65.8044, 6.5122, 4.5823.



This preview shows how white text looks on a background with the HunterLab color 65.8044, 6.5122,

4.5823.

# Color Blindness Simulation

Color vision deficiency is a very complex topic, and I could not describe the different causes any better than Wikipedia does, so if you want to learn more, you should check out their [article about color blindness](#).

## Dichromacy



### Original Color

65.8044, 6.5122, 4.5823

### Protanopia

65.8923, -1.9246, 3.1416

### Deuteranopia

65.7836, 4.9835, 4.5312



## Tritanopia

65.8386, 8.4983, 1.3504

# Trichromacy



## Original Color

65.8044, 6.5122, 4.5823

## Protanomaly

65.9248, 1.1401, 3.7021

## Deuteranomaly

65.8844, 5.3210, 4.6545

## Tritanomaly

65.7460, 8.0076, 2.6691

# Monochromacy



## Original Color

65.8044, 6.5122, 4.5823

## Achromatopsia

66.7234, -3.5602, 3.6252

## Achromatomaly

66.4444, -0.0256, 3.8260

# CSS Examples

## Text

The CSS property to change the color of the text to HunterLab 65.8044, 6.5122, 4.5823 is called "color". The color property can be set on classes, ids or directly on the HTML element.

This example shows how text in the color `rgb(197, 169, 174)` looks like.

```
.text, #text, p{  
    color:rgb(197, 169, 174)  
}
```

If you want to add a text shadow in that color use the text-shadow property, you can generate a text shadow directly with our [CSS Text Shadow Generator](#).

Here you see how black text with a 4 pixel rgb(197, 169, 174) colored shadow looks like.

```
.shadow{ text-shadow: 4px 4px 2px rgb(197, 169, 174) }
```

## Border

The CSS property to change the border of an element to HunterLab 65.8044, 6.5122, 4.5823 is called "border". The border property can be set on classes, ids or directly on the HTML element.

This example shows the color as border, it can be applied via the CSS property "border" or "border-color".

```
.border, #border, table{ border:4px solid rgb(197, 169, 174) }
```



If only the border color should be changed use the property `border-color`.

```
.border{ border-color:rgb(197, 169, 174) }
```

If you want to add a box shadow in that color use:

Here you see how a box with a 4 pixel `rgb(197, 169, 174)` colored shadow looks like.

```
.boxshadow{ -moz-box-shadow:4px 4px 4px 4px rgb(197, 169, 174); -webkit-box-shadow:4px 4px 4px 4px rgb(197, 169, 174); box-shadow:4px 4px 4px 4px rgb(197, 169, 174) }
```

# Background

The CSS property to change the background color of an element to HunterLab 65.8044, 6.5122, 4.5823 is called "background". The background property can be set on classes, ids or directly on the HTML element.

```
.background, #background, body{  
background: rgb(197, 169, 174) }
```

If only the background color should be changed can be used:

```
.background{ background-color: rgb(197,  
169, 174) }
```

This example shows the color as background, it is applied via the CSS property "background".

To optimize and compress your CSS code, you can use our [online CSS compressor and optimizer](#) based on csstidy. If you want to create a linear or radial gradient as background or border, check our [CSS Gradient Generator](#).

Hey! You found this booklet interesting? Support Converting Colors with the new Membership Option!

The pro membership hides all ads, plus gives you double the colors in the color bucket, and more awesome pro features!

**[Learn more, Memberships starting at \\$2.50/m!](#)**

**Follow me  
on Twitter!**

@ConvertingColor