

Converting Colors

HunterLab(66.0017, 0.3929,
11.6185)

Have a look what the booklet for
HunterLab(66.0017, 0.3929,
11.6185) contains.

HunterLab(66.0017, 0.3929, 11.6185)	3
<i>Conversions</i>	4
<i>Details</i>	6
<i>Harmonies</i>	12
<i>Previews</i>	24
<i>Color Blindness Simulation</i>	28
<i>CSS Examples</i>	31

Color

**HunterLab(66.0017, 0.3929,
11.6185)**

Conversions

Conversions Part 1

Format	Color
Hex	C0AD9E
RGB	192, 173, 158
RGB Percent	75%, 68%, 62%
CMY	0.2471, 0.3215, 0.3804
CMYK	0.00, 0.10, 0.18, 0.25
HSL	26°, 21%, 69%
HSV	26°, 18%, 75%
XYZ	42.8534, 43.5622, 38.4975
YIQ	176.9710, 16.1390, -0.6370

Conversions

Conversions Part 2

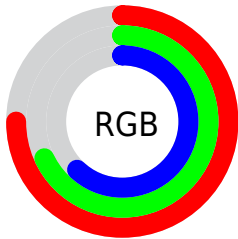
Format	Color
R _Y B	192, 185, 158
Decimal	12627358
CIE Lab	71.94, 4.37, 10.19
CIE LCh	72, 11.087, 66.797
Yxy	43.5642, 0.3431, 0.3487
Android (android.graphics.Color)	4290817438 (0xFFC0AD9E)
YUV	176.9710, -9.3527, 13.1804
Hunter-Lab	66.0017, 0.3929, 11.6185

Details

The HunterLab color $66.0017, 0.3929, 11.6185$ is a light color, and the websafe version is hex 999999 . A complement of this color would be $65.2060, -6.4265, -5.2779$, and the grayscale version is $66.3288, -3.5391, 3.6038$.

A 20% lighter version of the original color is $89.6831, -0.0657, 13.6441$, and $44.8771, 0.9060, 9.2917$ is the 20% darker color. If you saturate the color by 10%, you get $62.4527, 3.1861, 15.4219$, and if you desaturate by 10%, it is $69.6841, -2.1194, 7.4216$.

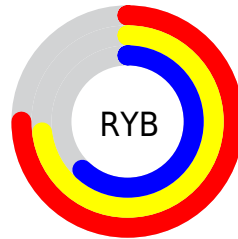
Distribution



Red (75%)

Green (68%)

Blue (62%)



Red (75%)

Yellow (73%)

Blue (62%)

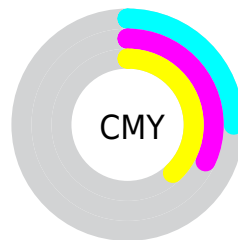


Cyan (0%)

Magenta (10%)

Yellow (18%)

Black (25%)



Cyan (25%)

Magenta (32%)

Yellow (38%)

Brightness & Saturation Gradients

These gradients show how the HunterLab color 66.0017, 0.3929, 11.6185 changes by changing the brightness by 10 percent. The first figure shows a shift by +10% for each color and the second figure -10%.

Similar to the brightness gradients but the following saturation gradients show a change of the HunterLab color 66.0017, 0.3929, 11.6185 by changing the saturation by 10% instead.

■ 66.0017, 0.3929,
11.6185

■ 66.0017, 0.3929,
11.6185

189.9808, -4.6086,
22.1606

■ 55.0709, 0.7508,
10.4878

■ 89.7561, -0.4644,
13.8922

■ 44.8193, 1.0600,
9.3531

■ 102.5142, -0.9533,
15.0392

■ 35.2971, 1.3124,
8.2076

115.8253, -1.4796,
16.1959

■ 26.5649, 1.5004,
7.0392

129.6673, -2.0413,
17.3636

■ 18.7023, 1.6124,
5.8274

144.0207, -2.6364,
18.5433

■ 11.8186, 1.6309,
4.6289

158.8677, -3.2636,

■ 4.6298, 3.8638,

19.7357

3.2409

174.1926, -3.9214,
20.9414

0.0000, NaN, NaN

0.0000, NaN, NaN

■ 66.0017, 0.3929,
11.6185

■ 66.0017, 0.3929,
11.6185

■ 62.4527, 3.1861,
15.4219

■ 69.6841, -2.1194,
7.4216

■ 59.0455, 6.2870,
18.7779

■ 73.4839, -4.3671,
2.8733

■ 55.7961, 9.7104,
21.6312

■ 77.3924, -6.3746,
-1.9861

■ 52.7204, 13.4657,
23.9226

■ 81.4008, -8.1634,
-7.1227

■ 49.8356, 17.5499,

■ 85.5012, -9.7537,

25.5935

-12.5074

■ 47.1597, 21.9415,
26.5943

■ 88.9992, -14.9943,
-8.4479

■ 44.7103, 26.5917,
26.8985

■ 92.5313, -20.3638,
-3.9597

■ 42.5004, 31.4038,
26.5620

■ 94.8402, -23.7796,
-1.1210

■ 42.0247, 32.4978,
26.4643

Harmonies

Analogous

The Analogous color harmony consists of three colors that are next to each other on the color wheel.



66.0032, 4.5288, 8.9499



66.0017, 0.3929, 11.6185



66.0032, -4.6842, 12.2167

Triad

The Triadic color harmony groups three colors that are evenly spaced from another and form a triangle on the color wheel.



66.0032, 0.3909, 11.6195



66.0032, -13.0017, 2.4769



66.0032, 2.4640, -4.3391

Complementary

The Complementary color scheme is a pair of colors which are on the opposite of each other on the color wheel.



66.0017, 0.3929, 11.6185



65.2060, -6.4265, -5.2779

Split Complementary

Split-complementary colors differ from the complementary color scheme. The scheme consists of three colors, the original color and two neighbors of the complement color.



66.0032, -2.3584, -6.3791



66.0017, 0.3929, 11.6185



66.0032, -11.2108, -2.2549

Square

The Square scheme is like the rectangle color scheme, but the four colors are evenly spaced on the color wheel.



66.0032, 0.3909, 11.6195



66.0032, -12.3160, 7.1704



66.0032, -7.3523, -5.5888



66.0032, 5.7510, -0.1972

Rectangle

The Rectangle color scheme consists of four colors that form a rectangle on the color wheel.



66.0017, 0.3929, 11.6185



66.0032, -7.8970, 11.4035



66.0032, -7.3523, -5.5888



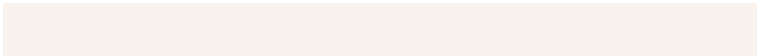
66.0032, 0.9632, -5.3072

Sweetspot

The Sweet Spot groups the original color and five complimentary colors.



66.0032, 0.3909, 11.6195



95.1295, -3.6809, 8.4247



62.3263, 11.0089, -1.1038



43.8954, -1.6026, 4.0990



98.8636, -5.2751, 5.3714



45.2661, -2.4153, 2.4594

Same Dimension

The Same Dimension uses a secret algorithm to generate beautiful new colors.



66.0032, 0.3909, 11.6195



87.0903, 1.8456, 17.5630



70.9838, -7.8786, 16.5826



32.8527, -0.8182, 3.8752



34.6895, 26.1207, 21.8328



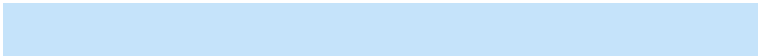
8.1060, 3.3792, 5.0540

Inverse Universe

The Inverse Universe completely reimagines the original color for something new.



65.2060, -6.4265, -5.2779



85.8021, -9.1578, -9.7292



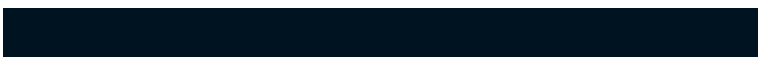
60.2575, 1.8808, -11.9055



32.6503, -2.5522, -0.4180



31.3565, 2.2679, -44.0887



7.4857, -1.1421, -6.8911

Previews

White Background



This preview shows how the HunterLab color 66.0017, 0.3929, 11.6185 looks on a white background.

Color Contrast Check

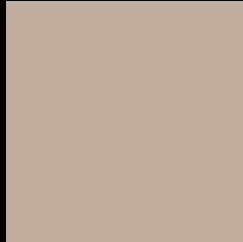
Large Text (above 18pt) WCAG AA × Fail

Any Text WCAG AA × Fail

Large Text (above 18pt) WCAG AAA × Fail

Any Text WCAG AAA × Fail

Black Background



This preview shows how the HunterLab color 66.0017, 0.3929, 11.6185 looks on a black background.

Color Contrast Check

Large Text (above 18pt) WCAG AA ✓ Pass

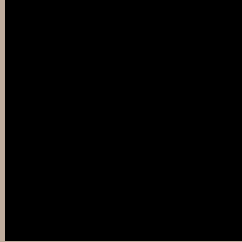
Any Text WCAG AA ✓ Pass

Large Text (above 18pt) WCAG AAA ✓ Pass

Any Text WCAG AAA ✓ Pass

If you want to check with other color combinations, try the [Color Contrast Checker](#).

HunterLab 66.0017, 0.3929, 11.6185 Background



This preview shows how black text looks on a background with the HunterLab color 66.0017, 0.3929, 11.6185.



This preview shows how white text looks on a background with the HunterLab color 66.0017, 0.3929,

Color Blindness Simulation

Color vision deficiency is a very complex topic, and I could not describe the different causes any better than Wikipedia does, so if you want to learn more, you should check out their [article about color blindness](#).

Dichromacy



Original Color

66.0017, 0.3929, 11.6185

Protanopia

66.0463, -3.9298, 11.1832

Deuteranopia

65.9788, 4.7986, 11.2642



Tritanopia

65.8763, 7.3021, 0.3999

Trichromacy



Original Color

66.0017, 0.3929, 11.6185

Protanomaly

66.0320, -2.4589, 11.1937

Deuteranomaly

65.9540, 3.2490, 11.2108

Tritanomaly

65.7836, 4.9835, 4.5312

Monochromacy



Original Color

66.0017, 0.3929, 11.6185

Achromatopsia

66.3066, -3.5380, 3.6026

Achromatomaly

66.2556, -2.5994, 6.7489

CSS Examples

Text

The CSS property to change the color of the text to HunterLab 66.0017, 0.3929, 11.6185 is called "color". The color property can be set on classes, ids or directly on the HTML element.

This example shows how text in the color `rgb(192, 173, 158)` looks like.

```
.text, #text, p{  
    color:rgb(192, 173, 158)  
}
```

If you want to add a text shadow in that color use the text-shadow property, you can generate a text shadow directly with our [CSS Text Shadow Generator](#).

Here you see how black text with a 4 pixel rgb(192, 173, 158) colored shadow looks like.

```
.shadow{ text-shadow: 4px 4px 2px rgb(192, 173, 158) }
```

Border

The CSS property to change the border of an element to HunterLab 66.0017, 0.3929, 11.6185 is called "border". The border property can be set on classes, ids or directly on the HTML element.

This example shows the color as border, it can be applied via the CSS property "border" or "border-color".

```
.border, #border, table{ border:4px solid rgb(192, 173, 158) }
```


If only the border color should be changed use the property `border-color`.

```
.border{ border-color:rgb(192, 173, 158) }
```

If you want to add a box shadow in that color use:

Here you see how a box with a 4 pixel `rgb(192, 173, 158)` colored shadow looks like.

```
.boxshadow{ -moz-box-shadow:4px 4px 4px  
4px rgb(192, 173, 158); -webkit-box-  
shadow:4px 4px 4px 4px rgb(192, 173, 158);  
box-shadow:4px 4px 4px 4px rgb(192, 173,  
158) }
```

Background

The CSS property to change the background color of an element to HunterLab 66.0017, 0.3929, 11.6185 is called "background". The background property can be set on classes, ids or directly on the HTML element.

```
.background, #background, body{  
background: rgb(192, 173, 158) }
```

If only the background color should be changed can be used:

```
.background{ background-color: rgb(192,  
173, 158) }
```

This example shows the color as background, it is applied via the CSS property "background".

To optimize and compress your CSS code, you can use our [online CSS compressor and optimizer](#) based on csstidy. If you want to create a linear or radial gradient as background or border, check our [CSS Gradient Generator](#).

Hey! You found this booklet interesting? Support Converting Colors with the new Membership Option!

The pro membership hides all ads, plus gives you double the colors in the color bucket, and more awesome pro features!

[Learn more, Memberships starting at \\$2.50/m!](#)

**Follow me
on Twitter!**

@ConvertingColor