

Converting Colors

HunterLab(66.0430, 1.8710,
19.7498)

Have a look what the booklet for
HunterLab(66.0430, 1.8710,
19.7498) contains.

HunterLab(65.9242, 2.0475, 19.7095)	3
<i>Conversions</i>	4
<i>Details</i>	6
<i>Harmonies</i>	12
<i>Previews</i>	24
<i>Color Blindness Simulation</i>	28
<i>CSS Examples</i>	31

Color

**HunterLab(65.9242, 2.0475,
19.7095)**

Conversions

Conversions Part 1

Format	Color
Hex	CAAB88
RGB	202, 171, 136
RGB Percent	79%, 67%, 53%
CMY	0.2078, 0.3294, 0.4667
CMYK	0.00, 0.15, 0.33, 0.21
HSL	32°, 38%, 66%
HSV	32°, 33%, 79%
XYZ	43.3640, 43.4600, 29.3956
YIQ	176.2790, 29.7110, -4.3130

Conversions

Conversions Part 2

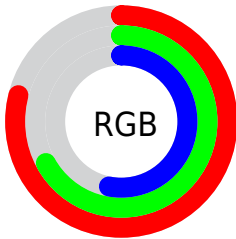
Format	Color
RYB	194, 202, 136
Decimal	13282184
CIELab	71.87, 6.18, 22.23
CIELCh	72, 23.076, 74.462
Yxy	43.4620, 0.3731, 0.3740
Android (android.graphics.Color)	4291472264 (0xFFCAAB88)
YUV	176.2790, -19.8575, 22.5573
Hunter-Lab	65.9242, 2.0475, 19.7095

Details

The HunterLab color $65.9242, 2.0475, 19.7095$ is a light color, and the websafe version is hex $CC9966$. A complement of this color would be $60.9384, -5.1973, -16.9069$, and the grayscale version is $66.0790, -3.5258, 3.5902$.

A 20% lighter version of the original color is $89.0656, -0.3001, 22.8276$, and $44.7980, 2.5265, 15.9963$ is the 20% darker color. If you saturate the color by 10%, you get $62.8366, 4.6122, 23.2670$, and if you desaturate by 10%, it is $69.1413, -0.1860, 15.5534$.

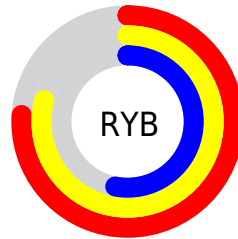
Distribution



Red (79%)

Green (67%)

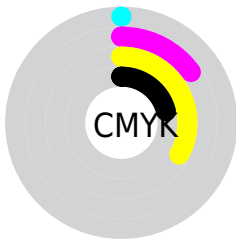
Blue (53%)



Red (76%)

Yellow (79%)

Blue (53%)

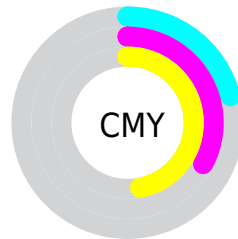


Cyan (0%)

Magenta (15%)

Yellow (33%)

Black (21%)



Cyan (21%)

Magenta (33%)

Yellow (47%)

Brightness & Saturation Gradients

These gradients show how the HunterLab color 65.9242, 2.0475, 19.7095 changes by changing the brightness by 10 percent. The first figure shows a shift by +10% for each color and the second figure -10%.

Similar to the brightness gradients but the following saturation gradients show a change of the HunterLab color 65.9242, 2.0475, 19.7095 by changing the saturation by 10% instead.

65.9242, 2.0475,
19.7095

65.9242, 2.0475,
19.7095

189.8706, -2.2865,
35.1077

54.9980, 2.3134,
17.8726

89.6703, 1.3594,
23.2584

44.7512, 2.5252,
15.9725

102.4245, 0.9497,
24.9889

35.2342, 2.6734,
13.9869

115.7319, 0.4994,
26.6999

26.5078, 2.7486,
11.8815

129.5703, 0.0110,
28.3964

18.6514, 2.7368,
9.6025

143.9202, -0.5135,
30.0825

11.7749, 2.6167,
8.2425

158.7639, -1.0723,

4.5468, 5.6811,

31.7614

3.1828

174.0855, -1.6637,
33.4358

0.0000, NaN, NaN

0.0000, NaN, NaN

■ 65.9242, 2.0475,
19.7095

■ 65.9242, 2.0475,
19.7095

■ 62.8366, 4.6122,
23.2670

■ 69.1413, -0.1860,
15.5534

■ 59.8838, 7.5298,
26.1704

■ 72.4739, -2.0997,
10.8483

■ 57.0779, 10.8058,
28.3706

■ 75.9149, -3.7162,
5.6447

■ 54.4294, 14.4381,
29.8271

■ 79.4564, -5.0567,
-0.0115

■ 51.9483, 18.4093,

■ 83.0912, -6.1418,

30.5177

-6.0785

■ 49.6433, 22.6804,
30.4561

■ 86.7306, -7.4444,
-11.3623

■ 48.0626, 25.9298,
30.0699

■ 89.7682, -12.3139,
-7.3872

■ 92.8631, -17.1228,
-3.4818

■ 95.5493, -21.1834,
-0.1996

Harmonies

Analogous

The Analogous color harmony consists of three colors that are next to each other on the color wheel.



65.9257, 11.7137, 15.8088



65.9242, 2.0475, 19.7095



65.9257, -8.5496, 19.7791

Triad

The Triadic color harmony groups three colors that are evenly spaced from another and form a triangle on the color wheel.



65.9257, 2.0451, 19.7104



65.9257, -22.1724, -1.4555



65.9257, 11.4184, -11.8553

Complementary

The Complementary color scheme is a pair of colors which are on the opposite of each other on the color wheel.



65.9242, 2.0475, 19.7095



60.9384, -5.1973, -16.9069

Split Complementary

Split-complementary colors differ from the complementary color scheme. The scheme consists of three colors, the original color and two neighbors of the complement color.



65.9257, 1.6626, -18.1571



65.9242, 2.0475, 19.7095



65.9257, -17.4870, -11.5385

Square

The Square scheme is like the rectangle color scheme, but the four colors are evenly spaced on the color wheel.



65.9257, 2.0451, 19.7104



65.9257, -22.0844, 8.5884



65.9257, -8.9087, -18.0327



65.9257, 17.3545, -1.8365

Rectangle

The Rectangle color scheme consists of four colors that form a rectangle on the color wheel.



65.9242, 2.0475, 19.7095



65.9257, -14.6954, 17.6938



65.9257, -8.9087, -18.0327



65.9257, 8.4507, -14.5442

Sweetspot

The Sweet Spot groups the original color and five complimentary colors.



65.9257, 2.0451, 19.7104



95.4258, -3.3010, 12.4577



57.4359, 24.4842, -2.3714



43.8561, -1.3807, 6.1968

0.0000, NaN, NaN



46.2646, -2.4686, 2.5136

Same Dimension

The Same Dimension uses a secret algorithm to generate beautiful new colors.



65.9257, 2.0451, 19.7104



83.0066, 4.9045, 28.9106



75.1149, -13.5237, 27.6629



34.9030, -1.2617, 4.3630



38.7872, 20.2779, 24.2555



9.6298, 2.8672, 5.9840

Inverse Universe

The Inverse Universe completely reimagines the original color for something new.



60.9384, -5.1973, -16.9069



75.2355, -6.2641, -28.3063



52.1536, 10.7182, -31.1988



34.2026, -2.2960, -0.7554



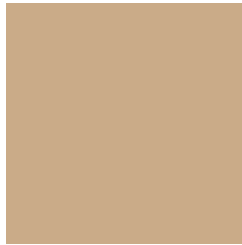
28.5837, 9.7611, -56.7986



7.5696, 0.1854, -9.8615

Previews

White Background



This preview shows how the HunterLab color 65.9242, 2.0475, 19.7095 looks on a white background.

Color Contrast Check

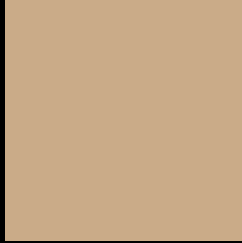
Large Text (above 18pt) WCAG AA × Fail

Any Text WCAG AA × Fail

Large Text (above 18pt) WCAG AAA × Fail

Any Text WCAG AAA × Fail

Black Background



This preview shows how the HunterLab color 65.9242, 2.0475, 19.7095 looks on a black background.

Color Contrast Check

Large Text (above 18pt) WCAG AA ✓ Pass

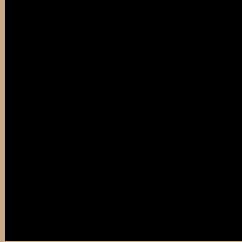
Any Text WCAG AA ✓ Pass

Large Text (above 18pt) WCAG AAA ✓ Pass

Any Text WCAG AAA ✓ Pass

If you want to check with other color combinations, try the [Color Contrast Checker](#).

HunterLab 65.9242, 2.0475, 19.7095 Background



This preview shows how black text looks on a background with the HunterLab color 65.9242, 2.0475, 19.7095.



This preview shows how white text looks on a background with the HunterLab color 65.9242, 2.0475,

Color Blindness Simulation

Color vision deficiency is a very complex topic, and I could not describe the different causes any better than Wikipedia does, so if you want to learn more, you should check out their [article about color blindness](#).

Dichromacy



Original Color

65.9242, 2.0475, 19.7095

Protanopia

66.0129, -5.0585, 18.9923

Deuteranopia

65.8930, 4.8665, 19.7297



Tritanopia

65.8711, 12.6926, 2.9003

Trichromacy



Original Color

65.9242, 2.0475, 19.7095

Protanomaly

65.8906, -2.4942, 19.2617

Deuteranomaly

65.9592, 3.6328, 19.7699

Tritanomaly

65.7730, 8.6675, 9.4458

Monochromacy



Original Color

65.9242, 2.0475, 19.7095

Achromatopsia

65.8903, -3.5157, 3.5799

Achromatomaly

65.6960, -2.0016, 10.0161

CSS Examples

Text

The CSS property to change the color of the text to HunterLab 65.9242, 2.0475, 19.7095 is called "color". The color property can be set on classes, ids or directly on the HTML element.

This example shows how text in the color `rgb(202, 171, 136)` looks like.

```
.text, #text, p{  
    color:rgb(202, 171, 136)  
}
```

If you want to add a text shadow in that color use the text-shadow property, you can generate a text shadow directly with our [CSS Text Shadow Generator](#).

Here you see how black text with a 4 pixel rgb(202, 171, 136) colored shadow looks like.

```
.shadow{ text-shadow: 4px 4px 2px rgb(202, 171, 136) }
```

Border

The CSS property to change the border of an element to HunterLab 65.9242, 2.0475, 19.7095 is called "border". The border property can be set on classes, ids or directly on the HTML element.

This example shows the color as border, it can be applied via the CSS property "border" or "border-color".

```
.border, #border, table{ border:4px solid rgb(202, 171, 136) }
```


If only the border color should be changed use the property `border-color`.

```
.border{ border-color:rgb(202, 171, 136) }
```

If you want to add a box shadow in that color use:

Here you see how a box with a 4 pixel `rgb(202, 171, 136)` colored shadow looks like.

```
.boxshadow{ -moz-box-shadow:4px 4px 4px  
4px rgb(202, 171, 136); -webkit-box-  
shadow:4px 4px 4px 4px rgb(202, 171, 136);  
box-shadow:4px 4px 4px 4px rgb(202, 171,  
136) }
```

Background

The CSS property to change the background color of an element to HunterLab 65.9242, 2.0475, 19.7095 is called "background". The background property can be set on classes, ids or directly on the HTML element.

```
.background, #background, body{  
background: rgb(202, 171, 136) }
```

If only the background color should be changed can be used:

```
.background{ background-color: rgb(202,  
171, 136) }
```

This example shows the color as background, it is applied via the CSS property "background".

To optimize and compress your CSS code, you can use our [online CSS compressor and optimizer](#) based on csstidy. If you want to create a linear or radial gradient as background or border, check our [CSS Gradient Generator](#).

Hey! You found this booklet interesting? Support Converting Colors with the new Membership Option!

The pro membership hides all ads, plus gives you double the colors in the color bucket, and more awesome pro features!

[Learn more, Memberships starting at \\$2.50/m!](#)

**Follow me
on Twitter!**

@ConvertingColor