

Converting Colors

HunterLab(66.0951, 3.3167,
3.6731)

Have a look what the booklet for
HunterLab(66.0951, 3.3167, 3.6731)
contains.

HunterLab(66.1481, 3.4444, 3.5380)	3
<i>Conversions</i>	4
<i>Details</i>	6
<i>Harmonies</i>	12
<i>Previews</i>	24
<i>Color Blindness Simulation</i>	28
<i>CSS Examples</i>	31

Color

**HunterLab(66.1481, 3.4444,
3.5380)**

Conversions

Conversions Part 1

Format	Color
Hex	BFACB1
RGB	191, 172, 177
RGB Percent	75%, 67%, 69%
CMY	0.2510, 0.3255, 0.3059
CMYK	0.00, 0.10, 0.07, 0.25
HSL	344°, 13%, 71%
HSV	344°, 10%, 75%
XYZ	44.1742, 43.7557, 47.7124
YIQ	178.2510, 9.7190, 5.5830

Conversions

Conversions Part 2

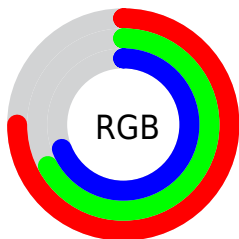
Format	Color
RYB	191, 172, 177
Decimal	12561585
CIELab	72.07, 7.71, -0.07
CIELCh	72, 7.708, 359.458
Yxy	43.7576, 0.3257, 0.3226
Android (android.graphics.Color)	4290751665 (0xFFBFACB1)
YUV	178.2510, -0.6167, 11.1809
Hunter-Lab	66.1481, 3.4444, 3.5380

Details

The HunterLab color $66.1481, 3.4444, 3.5380$ is a light color, and the websafe version is hex 999999 . A complement of this color would be $70.4120, -10.3882, 4.0870$, and the grayscale version is $66.8289, -3.5658, 3.6309$.

A 20% lighter version of the original color is $89.7750, 3.0215, 4.4589$, and $45.0460, 3.7336, 2.7240$ is the 20% darker color. If you saturate the color by 10%, you get $60.3898, 10.9707, 3.4194$, and if you desaturate by 10%, it is $72.2141, -3.8906, 3.9244$.

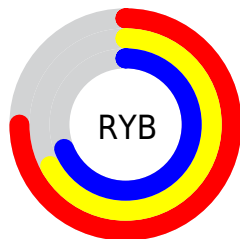
Distribution



Red (75%)

Green (67%)

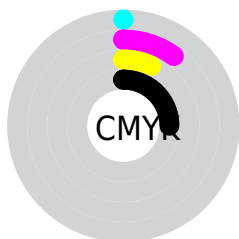
Blue (69%)



Red (75%)

Yellow (67%)

Blue (69%)

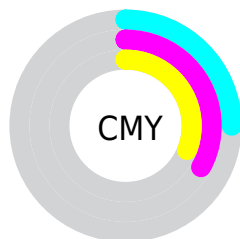


Cyan (0%)

Magenta (10%)

Yellow (7%)

Black (25%)



Cyan (25%)

Magenta (33%)

Yellow (31%)

Brightness & Saturation Gradients

These gradients show how the HunterLab color 66.1481, 3.4444, 3.5380 changes by changing the brightness by 10 percent. The first figure shows a shift by +10% for each color and the second figure -10%.

Similar to the brightness gradients but the following saturation gradients show a change of the HunterLab color 66.1481, 3.4444, 3.5380 by changing the saturation by 10% instead.

■ 66.1481, 3.4444,
3.5380

■ 66.1481, 3.4444,
3.5380

■ 190.1889, -0.3398,
10.2649

■ 55.2087, 3.6359,
2.9472

■ 89.9182, 2.8959,
4.8263

■ 44.9480, 3.7683,
2.3925

■ 102.6837, 2.5512,
5.5181

■ 35.4159, 3.8319,
1.8778

■ 116.0018, 2.1634,
6.2400

■ 26.6731, 3.8158,
1.4064

■ 129.8506, 1.7352,
6.9910

■ 18.7985, 3.7047,
0.9827

■ 144.2105, 1.2689,
7.7699

■ 11.9011, 3.4745,
0.6130

■ 159.0639, 0.7665,

■ 4.7827, 6.7665,

8.5758

0.1971

174.3948, 0.2298,
9.4077

0.0000, NaN, NaN

0.0000, NaN, NaN

■ 66.1481, 3.4444,
3.5380

■ 66.1481, 3.4444,
3.5380

■ 60.3898, 10.9707,
3.4194

■ 72.2141, -3.8906,
3.9244

■ 54.9889, 18.6719,
3.6212

■ 78.5405, -11.0346,
4.5286

■ 50.0135, 26.4727,
4.2078

■ 85.0944, -18.0073,
5.3138

■ 45.5447, 34.2111,
5.2419

■ 91.8484, -24.8315,
6.2500

■ 41.6757, 41.5937,

■ 94.5175, -25.4767,

6.7684

2.4020

■ 38.5034, 48.1699,
8.7849

■ 94.7716, -24.0318,
-1.2104

■ 36.1096, 53.3756,
11.2055

■ 34.5309, 56.7021,
13.8415

■ 33.6330, 58.2731,
16.3620

Harmonies

Analogous

The Analogous color harmony consists of three colors that are next to each other on the color wheel.



66.1496, 2.4582, 0.2100



66.1481, 3.4444, 3.5380



66.1496, 2.5252, 6.7197

Triad

The Triadic color harmony groups three colors that are evenly spaced from another and form a triangle on the color wheel.



66.1496, 3.4426, 3.5391



66.1496, -6.8616, 9.0165



66.1496, -6.9714, -2.2486

Complementary

The Complementary color scheme is a pair of colors which are on the opposite of each other on the color wheel.



66.1481, 3.4444, 3.5380



70.4120, -10.3882, 4.0870

Split Complementary

Split-complementary colors differ from the complementary color scheme. The scheme consists of three colors, the original color and two neighbors of the complement color.



66.1496, -9.3810, 0.3221



66.1481, 3.4444, 3.5380



66.1496, -9.3185, 6.8209

Square

The Square scheme is like the rectangle color scheme, but the four colors are evenly spaced on the color wheel.



66.1496, 3.4426, 3.5391



66.1496, -3.4684, 9.7791



66.1496, -10.2312, 3.6622



66.1496, -3.5978, -3.2378

Rectangle

The Rectangle color scheme consists of four colors that form a rectangle on the color wheel.



66.1481, 3.4444, 3.5380



66.1496, 0.9694, 8.3544



66.1496, -10.2312, 3.6622



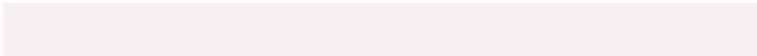
66.1496, -7.9184, -1.5343

Sweetspot

The Sweet Spot groups the original color and five complimentary colors.



66.1496, 3.4426, 3.5391



94.0852, -2.1906, 5.0580



66.1055, 4.1824, -3.4017



43.7774, -0.6542, 2.3487



98.8636, -5.2751, 5.3714



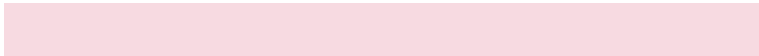
45.2661, -2.4153, 2.4594

Same Dimension

The Same Dimension uses a secret algorithm to generate beautiful new colors.



66.1496, 3.4426, 3.5391



86.7588, 6.8457, 4.6670



67.2886, 0.4094, 7.0778



30.9459, 1.3944, 1.6543



27.2827, 47.3243, 12.9639



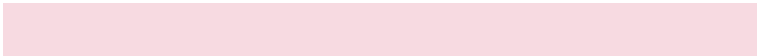
5.5025, 9.7437, 1.0708

Inverse Universe

The Inverse Universe completely reimagines the original color for something new.



66.1496, 3.4426, 3.5391



86.7588, 6.8457, 4.6670



69.2030, -7.3624, 0.2836



30.9459, 1.3944, 1.6543



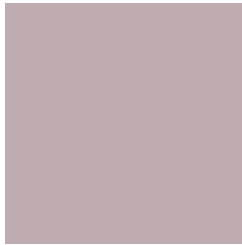
27.2827, 47.3243, 12.9639



5.5025, 9.7437, 1.0708

Previews

White Background



This preview shows how the HunterLab color 66.1481, 3.4444, 3.5380 looks on a white background.

Color Contrast Check

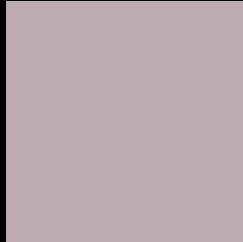
Large Text (above 18pt) WCAG AA × Fail

Any Text WCAG AA × Fail

Large Text (above 18pt) WCAG AAA × Fail

Any Text WCAG AAA × Fail

Black Background



This preview shows how the HunterLab color 66.1481, 3.4444, 3.5380 looks on a black background.

Color Contrast Check

Large Text (above 18pt) WCAG AA ✓ Pass

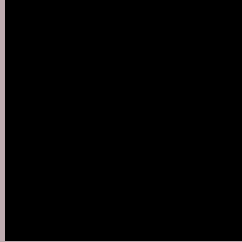
Any Text WCAG AA ✓ Pass

Large Text (above 18pt) WCAG AAA ✓ Pass

Any Text WCAG AAA ✓ Pass

If you want to check with other color combinations, try the [Color Contrast Checker](#).

HunterLab 66.1481, 3.4444, 3.5380 Background



This preview shows how black text looks on a background with the HunterLab color 66.1481, 3.4444, 3.5380.



This preview shows how white text looks on a background with the HunterLab color 66.1481, 3.4444,

3.5380.

Color Blindness Simulation

Color vision deficiency is a very complex topic, and I could not describe the different causes any better than Wikipedia does, so if you want to learn more, you should check out their [article about color blindness](#).

Dichromacy



Original Color

66.1481, 3.4444, 3.5380

Protanopia

66.2488, -2.0910, 2.6175

Deuteranopia

66.0588, 4.6182, 3.4530



Tritanopia

66.1763, 5.4448, 0.2442

Trichromacy



Original Color

66.1481, 3.4444, 3.5380

Protanomaly

66.2884, -0.5000, 3.1652

Deuteranomaly

65.9595, 4.2850, 3.3299

Tritanomaly

66.0821, 4.9415, 1.5832

Monochromacy



Original Color

66.1481, 3.4444, 3.5380

Achromatopsia

66.7234, -3.5602, 3.6252

Achromatomaly

66.5825, -1.0010, 3.5040

CSS Examples

Text

The CSS property to change the color of the text to HunterLab 66.1481, 3.4444, 3.5380 is called "color". The color property can be set on classes, ids or directly on the HTML element.

This example shows how text in the color `rgb(191, 172, 177)` looks like.

```
.text, #text, p{  
    color:rgb(191, 172, 177)  
}
```

If you want to add a text shadow in that color use the text-shadow property, you can generate a text shadow directly with our [CSS Text Shadow Generator](#).

Here you see how black text with a 4 pixel rgb(191, 172, 177) colored shadow looks like.

```
.shadow{ text-shadow: 4px 4px 2px rgb(191, 172, 177) }
```

Border

The CSS property to change the border of an element to HunterLab 66.1481, 3.4444, 3.5380 is called "border".

The border property can be set on classes, ids or directly on the HTML element.

This example shows the color as border, it can be applied via the CSS property "border" or "border-color".

```
.border, #border, table{ border:4px solid rgb(191, 172, 177) }
```


If only the border color should be changed use the property `border-color`.

```
.border{ border-color:rgb(191, 172, 177) }
```

If you want to add a box shadow in that color use:

Here you see how a box with a 4 pixel `rgb(191, 172, 177)` colored shadow looks like.

```
.boxshadow{ -moz-box-shadow:4px 4px 4px  
4px rgb(191, 172, 177); -webkit-box-  
shadow:4px 4px 4px 4px rgb(191, 172, 177);  
box-shadow:4px 4px 4px 4px rgb(191, 172,  
177) }
```

Background

The CSS property to change the background color of an element to HunterLab 66.1481, 3.4444, 3.5380 is called "background". The background property can be set on classes, ids or directly on the HTML element.

```
.background, #background, body{  
background: rgb(191, 172, 177) }
```

If only the background color should be changed can be used:

```
.background{ background-color: rgb(191,  
172, 177) }
```

This example shows the color as background, it is applied via the CSS property "background".

To optimize and compress your CSS code, you can use our [online CSS compressor and optimizer](#) based on csstidy. If you want to create a linear or radial gradient as background or border, check our [CSS Gradient Generator](#).

Hey! You found this booklet interesting? Support Converting Colors with the new Membership Option!

The pro membership hides all ads, plus gives you double the colors in the color bucket, and more awesome pro features!

[Learn more, Memberships starting at \\$2.50/m!](#)

**Follow me
on Twitter!**

@ConvertingColor