

Converting Colors

HunterLab(66.1006, 9.9859,
8.1154)

Have a look what the booklet for
HunterLab(66.1006, 9.9859, 8.1154)
contains.

HunterLab(66.1006, 9.9640, 8.1129)	3
<i>Conversions</i>	4
<i>Details</i>	6
<i>Harmonies</i>	12
<i>Previews</i>	24
<i>Color Blindness Simulation</i>	28
<i>CSS Examples</i>	31

Color

**HunterLab(66.1006, 9.9640,
8.1129)**

Conversions

Conversions Part 1

Format	Color
Hex	CFA7A7
RGB	207, 167, 167
RGB Percent	81%, 65%, 65%
CMY	0.1882, 0.3451, 0.3451
CMYK	0.00, 0.19, 0.19, 0.19
HSL	0°, 29%, 73%
HSV	0°, 19%, 81%
XYZ	46.5260, 43.6929, 42.5406
YIQ	178.9600, 23.8400, 8.4800

Conversions

Conversions Part 2

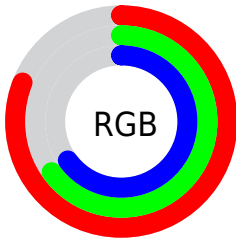
Format	Color
R_{YB}	207, 167, 167
Decimal	13608871
CIE _{Lab}	72.02, 14.64, 5.55
CIE _{LCh}	72, 15.661, 20.772
Yxy	43.6949, 0.3505, 0.3291
Android (android.graphics.Color)	4291798951 (0xFFCFA7A7)
YUV	178.9600, -5.8963, 24.5911
Hunter-Lab	66.1006, 9.9640, 8.1129

Details

The HunterLab color **66.1006, 9.9640, 8.1129** is a light color, and the websafe version is hex **CC9999**. A complement of this color would be **75.7263, -15.8146, 0.1663**, and the grayscale version is **67.1420, -3.5825, 3.6480**.

A 20% lighter version of the original color is **88.7561, 6.6654, 8.6434**, and **44.9162, 9.5181, 6.4336** is the 20% darker color. If you saturate the color by 10%, you get **60.0023, 17.7706, 10.2914**, and if you desaturate by 10%, it is **72.6108, 2.4772, 6.0747**.

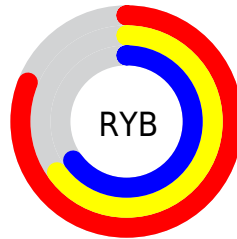
Distribution



Red (81%)

Green (65%)

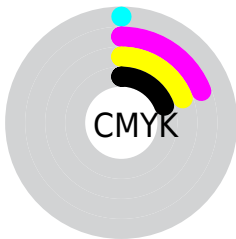
Blue (65%)



Red (81%)

Yellow (65%)

Blue (65%)

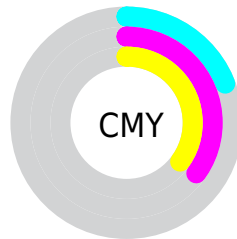


Cyan (0%)

Magenta (19%)

Yellow (19%)

Black (19%)



Cyan (19%)

Magenta (35%)

Yellow (35%)

Brightness & Saturation Gradients


These gradients show how the HunterLab color 66.1006, 9.9640, 8.1129 changes by changing the brightness by 10 percent. The first figure shows a shift by +10% for each color and the second figure -10%.


Similar to the brightness gradients but the following saturation gradients show a change of the HunterLab color 66.1006, 9.9640, 8.1129 by changing the saturation by 10% instead.


 66.1006, 9.9640,
8.1129

 66.1006, 9.9640,
8.1129

190.1215, 8.6660,
16.8920

 55.1640, 9.8186,
7.2342


 89.8657, 10.0417,
9.9287

 44.9063, 9.5958,
6.3711


 102.6287, 9.9909,
10.8649

 35.3774, 9.2821,
5.5224

115.9446, 9.8860,
11.8206

 26.6380, 8.8627,
4.6837

129.7912, 9.7308,
12.7960

 18.7673, 8.3170,
3.8474

144.1490, 9.5286,
13.7909

 11.8744, 7.6164,
2.9977

159.0003, 9.2821,

 4.7337, 13.2266,

14.8053

3.3136

174.3293, 8.9939,
15.8391

0.0000, NaN, NaN

0.0000, NaN, NaN

■ 66.1006, 9.9640,
8.1129

■ 66.1006, 9.9640,
8.1129

■ 60.0023, 17.7706,
10.2914

■ 72.6108, 2.4772,
6.0747

■ 54.3907, 25.8609,
12.5982

■ 79.4651, -4.6904,
4.1665

■ 49.3643, 34.0949,
14.9952

■ 86.6152, -11.5711,
2.3757

■ 45.0361, 42.1816,
17.3929

■ 94.0216, -18.2028,
0.6868

■ 41.5238, 49.6312,

■ 95.9195, -19.8360,

19.6357

0.2787

■ 38.9267, 55.7884,
21.5112

■ 37.2856, 60.0226,
22.8109

■ 36.4683, 62.2443,
23.4959

■ 36.4224, 62.3715,
23.5352

Harmonies

Analogous

The Analogous color harmony consists of three colors that are next to each other on the color wheel.



66.1021, 10.7433, 1.4444



66.1006, 9.9640, 8.1129



66.1021, 5.4832, 13.0354

Triad

The Triadic color harmony groups three colors that are evenly spaced from another and form a triangle on the color wheel.



66.1021, 9.9618, 8.1140



66.1021, -13.9481, 11.4193



66.1021, -5.7428, -10.8150

Complementary

The Complementary color scheme is a pair of colors which are on the opposite of each other on the color wheel.



66.1006, 9.9640, 8.1129



75.7263, -15.8146, 0.1663

Split Complementary

Split-complementary colors differ from the complementary color scheme. The scheme consists of three colors, the original color and two neighbors of the complement color.



66.1021, -12.0858, -7.4753



66.1006, 9.9640, 8.1129



66.1021, -16.6874, 5.6817

Square

The Square scheme is like the rectangle color scheme, but the four colors are evenly spaced on the color wheel.



66.1021, 9.9618, 8.1140



66.1021, -8.3841, 14.7967



66.1021, -16.0206, -1.2607



66.1021, 1.4671, -9.9840

Rectangle

The Rectangle color scheme consists of four colors that form a rectangle on the color wheel.



66.1006, 9.9640, 8.1129



66.1021, 1.1053, 14.8960



66.1021, -16.0206, -1.2607



66.1021, -8.0422, -10.1306

Sweetspot

The Sweet Spot groups the original color and five complimentary colors.



66.1021, 9.9618, 8.1140



94.6985, 0.1438, 6.8876



67.3858, 16.6770, -10.1250



43.5490, 0.3465, 3.2614

0.0000, NaN, NaN



46.2646, -2.4686, 2.5136

Same Dimension

The Same Dimension uses a secret algorithm to generate beautiful new colors.



66.1021, 9.9618, 8.1140



80.5618, 16.4727, 11.3412



71.8308, -0.2657, 14.0802



34.3634, 1.2050, 2.8858



28.9105, 49.5069, 18.6812



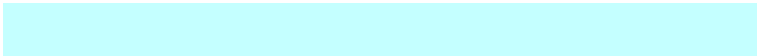
6.8367, 11.7048, 4.4176

Inverse Universe

The Inverse Universe completely reimagines the original color for something new.



75.7263, -15.8146, 0.1663



95.1416, -22.6639, -0.7283



69.4707, -6.0271, -7.6790



36.6155, -4.8053, 1.0332



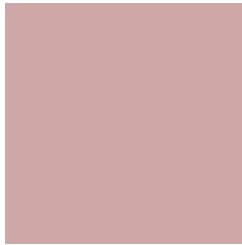
55.6314, -29.4896, -5.8749



13.1549, -6.9734, -1.3889

Previews

White Background



This preview shows how the HunterLab color 66.1006, 9.9640, 8.1129 looks on a white background.

Color Contrast Check

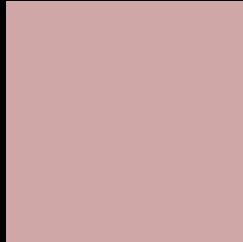
Large Text (above 18pt) WCAG AA × Fail

Any Text WCAG AA × Fail

Large Text (above 18pt) WCAG AAA × Fail

Any Text WCAG AAA × Fail

Black Background



This preview shows how the HunterLab color 66.1006, 9.9640, 8.1129 looks on a black background.

Color Contrast Check

Large Text (above 18pt) WCAG AA ✓ Pass

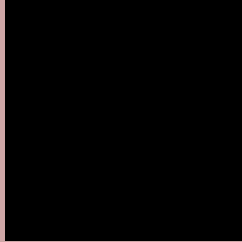
Any Text WCAG AA ✓ Pass

Large Text (above 18pt) WCAG AAA ✓ Pass

Any Text WCAG AAA ✓ Pass

If you want to check with other color combinations, try the [Color Contrast Checker](#).

HunterLab 66.1006, 9.9640, 8.1129 Background



This preview shows how black text looks on a background with the HunterLab color 66.1006, 9.9640, 8.1129.



This preview shows how white text looks on a background with the HunterLab color 66.1006, 9.9640,

Color Blindness Simulation

Color vision deficiency is a very complex topic, and I could not describe the different causes any better than Wikipedia does, so if you want to learn more, you should check out their [article about color blindness](#).

Dichromacy



Original Color

66.1006, 9.9640, 8.1129

Protanopia

66.2216, -2.6021, 5.8155

Deuteranopia

66.2456, 4.6084, 8.6124



Tritanopia

65.9807, 13.0466, 3.0370

Trichromacy



Original Color

66.1006, 9.9640, 8.1129

Protanomaly

66.1336, 1.4993, 6.6827

Deuteranomaly

66.2723, 6.1575, 8.6690

Tritanomaly

66.1350, 11.8971, 5.0605

Monochromacy



Original Color

66.1006, 9.9640, 8.1129

Achromatopsia

67.1406, -3.5825, 3.6479

Achromatomaly

66.7637, 0.9470, 5.1387

CSS Examples

Text

The CSS property to change the color of the text to HunterLab 66.1006, 9.9640, 8.1129 is called "color". The color property can be set on classes, ids or directly on the HTML element.

This example shows how text in the color `rgb(207, 167, 167)` looks like.

```
.text, #text, p{  
    color:rgb(207, 167, 167)  
}
```

If you want to add a text shadow in that color use the text-shadow property, you can generate a text shadow directly with our [CSS Text Shadow Generator](#).

Here you see how black text with a 4 pixel rgb(207, 167, 167) colored shadow looks like.

```
.shadow{ text-shadow: 4px 4px 2px rgb(207, 167, 167) }
```

Border

The CSS property to change the border of an element to HunterLab 66.1006, 9.9640, 8.1129 is called "border".

The border property can be set on classes, ids or directly on the HTML element.

This example shows the color as border, it can be applied via the CSS property "border" or "border-color".

```
.border, #border, table{ border:4px solid rgb(207, 167, 167) }
```


If only the border color should be changed use the property `border-color`.

```
.border{ border-color:rgb(207, 167, 167) }
```

If you want to add a box shadow in that color use:

Here you see how a box with a 4 pixel `rgb(207, 167, 167)` colored shadow looks like.

```
.boxshadow{ -moz-box-shadow:4px 4px 4px  
4px rgb(207, 167, 167); -webkit-box-  
shadow:4px 4px 4px 4px rgb(207, 167, 167);  
box-shadow:4px 4px 4px 4px rgb(207, 167,  
167) }
```

Background

The CSS property to change the background color of an element to HunterLab 66.1006, 9.9640, 8.1129 is called "background". The background property can be set on classes, ids or directly on the HTML element.

```
.background, #background, body{  
background: rgb(207, 167, 167) }
```

If only the background color should be changed can be used:

```
.background{ background-color: rgb(207,  
167, 167) }
```

This example shows the color as background, it is applied via the CSS property "background".

To optimize and compress your CSS code, you can use our [online CSS compressor and optimizer](#) based on csstidy. If you want to create a linear or radial gradient as background or border, check our [CSS Gradient Generator](#).

Hey! You found this booklet interesting? Support Converting Colors with the new Membership Option!

The pro membership hides all ads, plus gives you double the colors in the color bucket, and more awesome pro features!

[Learn more, Memberships starting at \\$2.50/m!](#)

**Follow me
on Twitter!**

@ConvertingColor