

Converting Colors

HunterLab(66.1645, 7.2200,
7.1458)

Have a look what the booklet for
HunterLab(66.1645, 7.2200, 7.1458)
contains.

HunterLab(66.0742, 7.1180, 7.1572)	3
<i>Conversions</i>	4
<i>Details</i>	6
<i>Harmonies</i>	12
<i>Previews</i>	24
<i>Color Blindness Simulation</i>	28
<i>CSS Examples</i>	31

Color

**HunterLab(66.0742, 7.1180,
7.1572)**

Conversions

Conversions Part 1

Format	Color
Hex	C9A9A9
RGB	201, 169, 169
RGB Percent	79%, 66%, 66%
CMY	0.2118, 0.3372, 0.3373
CMYK	0.00, 0.16, 0.16, 0.21
HSL	0°, 23%, 73%
HSV	0°, 16%, 79%
XYZ	45.4368, 43.6580, 43.5681
YIQ	178.5680, 19.0720, 6.7840

Conversions

Conversions Part 2

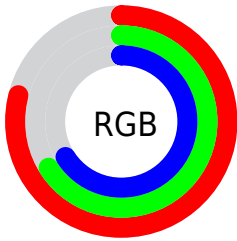
Format	Color
R _Y B	201, 169, 169
Decimal	13216169
CIE Lab	72.00, 11.65, 4.35
CIE LCh	72, 12.430, 20.466
Yxy	43.6600, 0.3425, 0.3291
Android (android.graphics.Color)	4291406249 (0xFFC9A9A9)
YUV	178.5680, -4.7170, 19.6729
Hunter-Lab	66.0742, 7.1180, 7.1572

Details

The HunterLab color $66.0742, 7.1180, 7.1572$ is a light color, and the websafe version is hex $CC9999$. A complement of this color would be $73.7727, -13.4672, 0.8120$, and the grayscale version is $66.9750, -3.5736, 3.6389$.

A 20% lighter version of the original color is $89.4165, 5.9185, 8.4408$, and $44.9555, 7.1117, 5.6300$ is the 20% darker color. If you saturate the color by 10%, you get $60.0416, 14.5502, 9.2151$, and if you desaturate by 10%, it is $72.4814, -0.0044, 5.2334$.

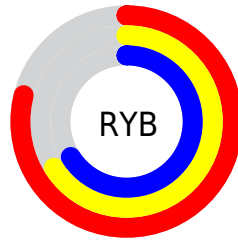
Distribution



Red (79%)

Green (66%)

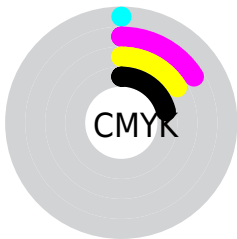
Blue (66%)



Red (79%)

Yellow (66%)

Blue (66%)

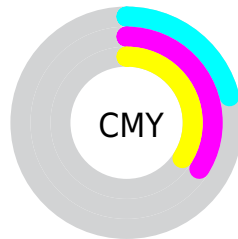


Cyan (0%)

Magenta (16%)

Yellow (16%)

Black (21%)



Cyan (21%)


Magenta (34%)

Yellow (34%)

Brightness & Saturation Gradients


These gradients show how the HunterLab color 66.0742, 7.1180, 7.1572 changes by changing the brightness by 10 percent. The first figure shows a shift by +10% for each color and the second figure -10%.


Similar to the brightness gradients but the following saturation gradients show a change of the HunterLab color 66.0742, 7.1180, 7.1572 by changing the saturation by 10% instead.


 66.0742, 7.1180,
7.1572

 66.0742, 7.1180,
7.1572


190.0839, 4.7557,
15.4866

 55.1392, 7.1161,
6.3421


 89.8364, 6.9284,
8.8568

 44.8831, 7.0442,
5.5474


 102.5981, 6.7519,
9.7394

 35.3559, 6.8903,
4.7730


115.9127, 6.5259,
10.6438

 26.6185, 6.6410,
4.0165

129.7581, 6.2537,
11.5701

 18.7499, 6.2771,
3.2731

144.1147, 5.9383,
12.5178

 11.8595, 5.7706,
2.5327

158.9649, 5.5821,

 4.7062, 10.5309,

13.4867

3.2943

174.2928, 5.1873,
14.4764

0.0000, NaN, NaN

0.0000, NaN, NaN

■ 66.0742, 7.1180,
7.1572

■ 66.0742, 7.1180,
7.1572

■ 60.0416, 14.5502,
9.2151

■ 72.4814, -0.0044,
5.2334

■ 54.4497, 22.2779,
11.4020

■ 79.2025, -6.8277,
3.4308

■ 49.3874, 30.2040,
13.6933

■ 86.1947, -13.3865,
1.7363

■ 44.9587, 38.1064,
16.0222

■ 93.4230, -19.7178,
0.1350

■ 41.2772, 45.5829,

■ 95.4765, -21.4489,

18.2619

-0.2938

■ 38.4482, 52.0472,
20.2235

■ 36.5359, 56.8526,
21.6950

■ 35.5163, 59.5816,
22.5349

■ 35.2393, 60.3447,
22.7708

Harmonies

Analogous

The Analogous color harmony consists of three colors that are next to each other on the color wheel.



66.0757, 7.6941, 1.8367



66.0742, 7.1180, 7.1572



66.0757, 3.6331, 11.1820

Triad

The Triadic color harmony groups three colors that are evenly spaced from another and form a triangle on the color wheel.



66.0757, 7.1159, 7.1583



66.0757, -11.8157, 9.9278



66.0757, -5.3446, -7.5998

Complementary

The Complementary color scheme is a pair of colors which are on the opposite of each other on the color wheel.



66.0742, 7.1180, 7.1572



73.7727, -13.4672, 0.8120

Split Complementary

Split-complementary colors differ from the complementary color scheme. The scheme consists of three colors, the original color and two neighbors of the complement color.



66.0757, -10.3988, -5.0103



66.0742, 7.1180, 7.1572



66.0757, -14.0500, 5.3096

Square

The Square scheme is like the rectangle color scheme, but the four colors are evenly spaced on the color wheel.



66.0757, 7.1159, 7.1583



66.0757, -7.3386, 12.6839



66.0757, -13.5403, -0.1749



66.0757, 0.3685, -6.9982

Rectangle

The Rectangle color scheme consists of four colors that form a rectangle on the color wheel.



66.0742, 7.1180, 7.1572



66.0757, 0.1962, 12.7336



66.0757, -13.5403, -0.1749



66.0757, -7.1738, -7.0659

Sweetspot

The Sweet Spot groups the original color and five complimentary colors.



66.0757, 7.1159, 7.1583



95.5719, -0.7794, 6.6413



67.0903, 12.4782, -7.2750



43.9318, -0.0607, 3.1526

0.0000, NaN, NaN



46.2646, -2.4686, 2.5136

Same Dimension

The Same Dimension uses a secret algorithm to generate beautiful new colors.



66.0757, 7.1159, 7.1583



83.7578, 12.5200, 10.2473



70.6969, -1.0156, 12.0652



32.6146, 1.1243, 2.7326



27.9429, 47.8493, 18.0560



6.0810, 10.4100, 3.9293

Inverse Universe

The Inverse Universe completely reimagines the original color for something new.



73.7727, -13.4672, 0.8120



95.8838, -19.9559, 0.2328



68.8117, -5.6234, -5.3094



34.7381, -4.5429, 0.9855



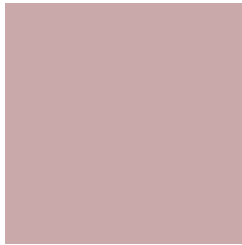
53.7682, -28.5011, -5.6798



11.7003, -6.2022, -1.2355

Previews

White Background



This preview shows how the HunterLab color 66.0742, 7.1180, 7.1572 looks on a white background.

Color Contrast Check

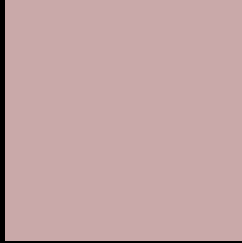
Large Text (above 18pt) WCAG AA × Fail

Any Text WCAG AA × Fail

Large Text (above 18pt) WCAG AAA × Fail

Any Text WCAG AAA × Fail

Black Background



This preview shows how the HunterLab color 66.0742, 7.1180, 7.1572 looks on a black background.

Color Contrast Check

Large Text (above 18pt) WCAG AA ✓ Pass

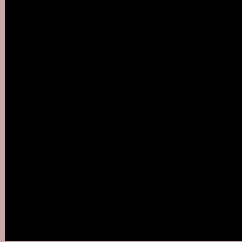
Any Text WCAG AA ✓ Pass

Large Text (above 18pt) WCAG AAA ✓ Pass

Any Text WCAG AAA ✓ Pass

If you want to check with other color combinations, try the [Color Contrast Checker](#).

HunterLab 66.0742, 7.1180, 7.1572 Background



This preview shows how black text looks on a background with the HunterLab color 66.0742, 7.1180, 7.1572.



This preview shows how white text looks on a background with the HunterLab color 66.0742, 7.1180,

7.1572.

Color Blindness Simulation

Color vision deficiency is a very complex topic, and I could not describe the different causes any better than Wikipedia does, so if you want to learn more, you should check out their [article about color blindness](#).

Dichromacy



Original Color

66.0742, 7.1180, 7.1572

Protanopia

66.2507, -2.4430, 5.3992

Deuteranopia

66.2274, 4.7156, 7.2874



Tritanopia

65.9464, 10.2248, 1.9933

Trichromacy



Original Color

66.0742, 7.1180, 7.1572

Protanomaly

65.9978, 1.1522, 5.6248

Deuteranomaly

66.0453, 5.5685, 7.0975

Tritanomaly

66.1033, 9.0639, 4.0504

Monochromacy



Original Color

66.0742, 7.1180, 7.1572

Achromatopsia

67.1406, -3.5825, 3.6479

Achromatomaly

66.5732, 0.2962, 4.9069

CSS Examples

Text

The CSS property to change the color of the text to HunterLab 66.0742, 7.1180, 7.1572 is called "color". The color property can be set on classes, ids or directly on the HTML element.

This example shows how text in the color `rgb(201, 169, 169)` looks like.

```
.text, #text, p{  
    color:rgb(201, 169, 169)  
}
```

If you want to add a text shadow in that color use the text-shadow property, you can generate a text shadow directly with our [CSS Text Shadow Generator](#).

Here you see how black text with a 4 pixel rgb(201, 169, 169) colored shadow looks like.

```
.shadow{ text-shadow: 4px 4px 2px rgb(201, 169, 169) }
```

Border

The CSS property to change the border of an element to HunterLab 66.0742, 7.1180, 7.1572 is called "border". The border property can be set on classes, ids or directly on the HTML element.

This example shows the color as border, it can be applied via the CSS property "border" or "border-color".

```
.border, #border, table{ border:4px solid rgb(201, 169, 169) }
```


If only the border color should be changed use the property `border-color`.

```
.border{ border-color:rgb(201, 169, 169) }
```

If you want to add a box shadow in that color use:

Here you see how a box with a 4 pixel `rgb(201, 169, 169)` colored shadow looks like.

```
.boxshadow{ -moz-box-shadow:4px 4px 4px  
4px rgb(201, 169, 169); -webkit-box-  
shadow:4px 4px 4px 4px rgb(201, 169, 169);  
box-shadow:4px 4px 4px 4px rgb(201, 169,  
169) }
```

Background

The CSS property to change the background color of an element to HunterLab 66.0742, 7.1180, 7.1572 is called "background". The background property can be set on classes, ids or directly on the HTML element.

```
.background, #background, body{  
background: rgb(201, 169, 169) }
```

If only the background color should be changed can be used:

```
.background{ background-color: rgb(201,  
169, 169) }
```

This example shows the color as background, it is applied via the CSS property "background".

To optimize and compress your CSS code, you can use our [online CSS compressor and optimizer](#) based on csstidy. If you want to create a linear or radial gradient as background or border, check our [CSS Gradient Generator](#).

Hey! You found this booklet interesting? Support Converting Colors with the new Membership Option!

The pro membership hides all ads, plus gives you double the colors in the color bucket, and more awesome pro features!

[Learn more, Memberships starting at \\$2.50/m!](#)

**Follow me
on Twitter!**

@ConvertingColor