

Converting Colors

HunterLab(66.1895, 0.3452,
7.3788)

Have a look what the booklet for
HunterLab(66.1895, 0.3452, 7.3788)
contains.

HunterLab(66.2028, 0.1829, 7.1804)	3
<i>Conversions</i>	4
<i>Details</i>	6
<i>Harmonies</i>	12
<i>Previews</i>	24
<i>Color Blindness Simulation</i>	28
<i>CSS Examples</i>	31

Color

**HunterLab(66.2028, 0.1829,
7.1804)**

Conversions

Conversions Part 1

Format	Color
Hex	BCAEA9
RGB	188, 174, 169
RGB Percent	74%, 68%, 66%
CMY	0.2627, 0.3176, 0.3372
CMYK	0.00, 0.07, 0.10, 0.26
HSL	16°, 12%, 70%
HSV	16°, 10%, 74%
XYZ	43.0366, 43.8281, 43.7275
YIQ	177.6160, 9.9490, 1.4130

Conversions

Conversions Part 2

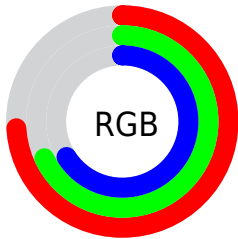
Format	Color
RYB	188, 176, 169
Decimal	12365481
CIELab	72.11, 4.14, 4.36
CIELCh	72, 6.018, 46.475
Yxy	43.8300, 0.3295, 0.3356
Android (android.graphics.Color)	4290555561 (0xFFBCAEA9)
YUV	177.6160, -4.2477, 9.1068
Hunter-Lab	66.2028, 0.1829, 7.1804

Details

The HunterLab color $66.2028, 0.1829, 7.1804$ is a light color, and the websafe version is hex 999999 . A complement of this color would be $67.7731, -7.0025, 0.0167$, and the grayscale version is $66.5788, -3.5525, 3.6174$.

A 20% lighter version of the original color is $89.8073, -0.5764, 8.7714$, and $45.1158, 0.8185, 5.6974$ is the 20% darker color. If you saturate the color by 10%, you get $61.7216, 4.3661, 10.3099$, and if you desaturate by 10%, it is $70.8645, -3.7435, 3.8887$.

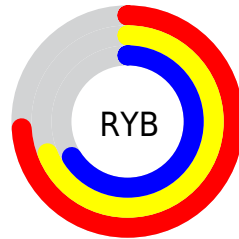
Distribution



Red (74%)

Green (68%)

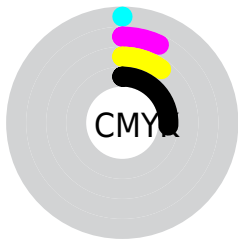
Blue (66%)



Red (74%)

Yellow (69%)

Blue (66%)

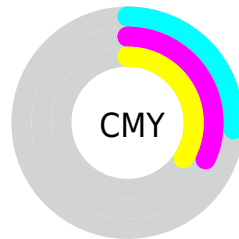


Cyan (0%)

Magenta (7%)

Yellow (10%)

Black (26%)



Cyan (26%)

Magenta (32%)

Yellow (34%)

Brightness & Saturation Gradients

These gradients show how the HunterLab color 66.2028, 0.1829, 7.1804 changes by changing the brightness by 10 percent. The first figure shows a shift by +10% for each color and the second figure -10%.

Similar to the brightness gradients but the following saturation gradients show a change of the HunterLab color 66.2028, 0.1829, 7.1804 by changing the saturation by 10% instead.

■ 66.2028, 0.1829,
7.1804

■ 66.2028, 0.1829,
7.1804

190.2667, -4.9065,
15.5183

■ 55.2602, 0.5532,
6.3641

■ 89.9788, -0.6967,
8.8821

■ 44.9961, 0.8753,
5.5682

102.7470, -1.1961,
9.7657

■ 35.4603, 1.1417,
4.7925

116.0678, -1.7324,
10.6711

■ 26.7135, 1.3449,
4.0347

129.9191, -2.3037,
11.5983

■ 18.8344, 1.4738,
3.2899

144.2814, -2.9082,
12.5469

■ 11.9320, 1.5114,
2.5480

159.1372, -3.5443,

■ 4.8385, 3.4738,

13.5167

3.3870

174.4704, -4.2108,
14.5073

0.0000, NaN, NaN

0.0000, NaN, NaN

■ 66.2028, 0.1829,
7.1804

■ 66.2028, 0.1829,
7.1804

■ 61.7216, 4.3661,
10.3099

■ 70.8645, -3.7435,
3.8887

■ 57.4399, 8.8347,
13.2371

■ 75.6828, -7.4335,
0.4598

■ 53.3869, 13.6020,
15.9151

■ 80.6426, -10.9149,
-3.0836

■ 49.5949, 18.6677,
18.2831

■ 85.7301, -14.2121,
-6.7251

■ 46.1016, 24.0037,

■ 90.6437, -18.9774,

20.2667

-6.3609

■ 42.9485, 29.5391,
21.7812

■ 94.5682, -24.7807,
-1.4761

■ 40.1793, 35.1425,
22.7419

■ 37.8360, 40.6091,
23.0876

■ 35.9596, 45.5766,
22.9560

Harmonies

Analogous

The Analogous color harmony consists of three colors that are next to each other on the color wheel.



66.2043, 1.6620, 5.0279



66.2028, 0.1829, 7.1804



66.2043, -2.2827, 8.3539

Triad

The Triadic color harmony groups three colors that are evenly spaced from another and form a triangle on the color wheel.



66.2043, 0.1811, 7.1814



66.2043, -8.6474, 4.7805



66.2043, -2.0151, -1.4540

Complementary

The Complementary color scheme is a pair of colors which are on the opposite of each other on the color wheel.



66.2028, 0.1829, 7.1804



67.7731, -7.0025, 0.0167

Split Complementary

Split-complementary colors differ from the complementary color scheme. The scheme consists of three colors, the original color and two neighbors of the complement color.



66.2043, -4.7801, -1.5269



66.2028, 0.1829, 7.1804



66.2043, -8.5785, 2.1471

Square

The Square scheme is like the rectangle color scheme, but the four colors are evenly spaced on the color wheel.



66.2043, 0.1811, 7.1814



66.2043, -7.3629, 7.0068



66.2043, -7.1729, -0.1856



66.2043, 0.3798, 0.0097

Rectangle

The Rectangle color scheme consists of four colors that form a rectangle on the color wheel.



66.2028, 0.1829, 7.1804



66.2043, -4.1370, 8.4541



66.2043, -7.1729, -0.1856



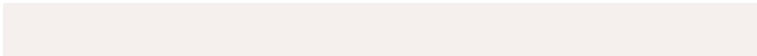
66.2043, -2.9329, -1.6440

Sweetspot

The Sweet Spot groups the original color and five complimentary colors.



66.2043, 0.1811, 7.1814



93.5303, -3.5191, 6.5601



65.1899, 5.0297, -0.6121



43.1365, -1.4362, 3.2094



97.7295, -5.2146, 5.3098



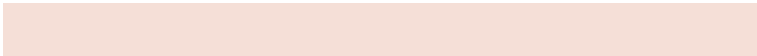
44.2712, -2.3622, 2.4053

Same Dimension

The Same Dimension uses a secret algorithm to generate beautiful new colors.



66.2043, 0.1811, 7.1814



87.8439, 1.3913, 10.5680



68.9396, -4.4242, 10.1202



31.5183, -0.0579, 3.2867



29.8486, 37.0808, 19.0417



6.7828, 4.9875, 4.2669

Inverse Universe

The Inverse Universe completely reimagines the original color for something new.



67.7731, -7.0025, 0.0167



90.3865, -10.2546, -1.0448



64.9939, -2.4337, -3.3957



32.2068, -3.2098, 0.1428



38.8206, -10.5552, -25.7368



8.3161, -2.9742, -3.9741

Previews

White Background



This preview shows how the HunterLab color 66.2028, 0.1829, 7.1804 looks on a white background.

Color Contrast Check

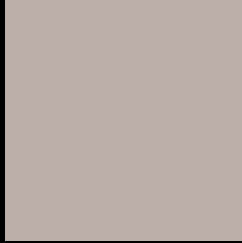
Large Text (above 18pt) WCAG AA × Fail

Any Text WCAG AA × Fail

Large Text (above 18pt) WCAG AAA × Fail

Any Text WCAG AAA × Fail

Black Background



This preview shows how the HunterLab color 66.2028, 0.1829, 7.1804 looks on a black background.

Color Contrast Check

Large Text (above 18pt) WCAG AA ✓ Pass

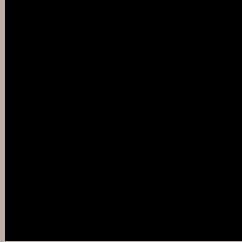
Any Text WCAG AA ✓ Pass

Large Text (above 18pt) WCAG AAA ✓ Pass

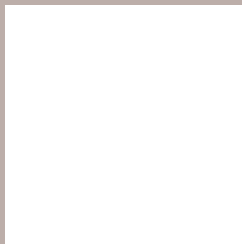
Any Text WCAG AAA ✓ Pass

If you want to check with other color combinations, try the [Color Contrast Checker](#).

HunterLab 66.2028, 0.1829, 7.1804 Background



This preview shows how black text looks on a background with the HunterLab color 66.2028, 0.1829, 7.1804.



This preview shows how white text looks on a background with the HunterLab color 66.2028, 0.1829,

7.1804.

Color Blindness Simulation

Color vision deficiency is a very complex topic, and I could not describe the different causes any better than Wikipedia does, so if you want to learn more, you should check out their [article about color blindness](#).

Dichromacy



Original Color

66.2028, 0.1829, 7.1804

Protanopia

66.2556, -2.5994, 6.7489

Deuteranopia

66.2559, 4.8680, 6.8799



Tritanopia

66.2986, 4.4466, -0.1162

Trichromacy



Original Color

66.2028, 0.1829, 7.1804

Protanomaly

66.1457, -1.4622, 6.6445

Deuteranomaly

66.2395, 3.3416, 6.8346

Tritanomaly

66.3028, 2.6057, 2.7641

Monochromacy



Original Color

66.2028, 0.1829, 7.1804

Achromatopsia

66.7234, -3.5602, 3.6252

Achromatomaly

66.6967, -2.3039, 5.0044

CSS Examples

Text

The CSS property to change the color of the text to HunterLab 66.2028, 0.1829, 7.1804 is called "color". The color property can be set on classes, ids or directly on the HTML element.

This example shows how text in the color `rgb(188, 174, 169)` looks like.

```
.text, #text, p{  
    color:rgb(188, 174, 169)  
}
```

If you want to add a text shadow in that color use the text-shadow property, you can generate a text shadow directly with our [CSS Text Shadow Generator](#).

Here you see how black text with a 4 pixel rgb(188, 174, 169) colored shadow looks like.

```
.shadow{ text-shadow: 4px 4px 2px rgb(188, 174, 169) }
```

Border

The CSS property to change the border of an element to HunterLab 66.2028, 0.1829, 7.1804 is called "border".

The border property can be set on classes, ids or directly on the HTML element.

This example shows the color as border, it can be applied via the CSS property "border" or "border-color".

```
.border, #border, table{ border:4px solid rgb(188, 174, 169) }
```


If only the border color should be changed use the property `border-color`.

```
.border{ border-color:rgb(188, 174, 169) }
```

If you want to add a box shadow in that color use:

Here you see how a box with a 4 pixel `rgb(188, 174, 169)` colored shadow looks like.

```
.boxshadow{ -moz-box-shadow:4px 4px 4px  
4px rgb(188, 174, 169); -webkit-box-  
shadow:4px 4px 4px 4px rgb(188, 174, 169);  
box-shadow:4px 4px 4px 4px rgb(188, 174,  
169) }
```

Background

The CSS property to change the background color of an element to HunterLab 66.2028, 0.1829, 7.1804 is called "background". The background property can be set on classes, ids or directly on the HTML element.

```
.background, #background, body{  
background: rgb(188, 174, 169) }
```

If only the background color should be changed can be used:

```
.background{ background-color: rgb(188,  
174, 169) }
```

This example shows the color as background, it is applied via the CSS property "background".

To optimize and compress your CSS code, you can use our [online CSS compressor and optimizer](#) based on csstidy. If you want to create a linear or radial gradient as background or border, check our [CSS Gradient Generator](#).

Hey! You found this booklet interesting? Support Converting Colors with the new Membership Option!

The pro membership hides all ads, plus gives you double the colors in the color bucket, and more awesome pro features!

[Learn more, Memberships starting at \\$2.50/m!](#)

**Follow me
on Twitter!**

@ConvertingColor