

Converting Colors

HunterLab(66.2164, 3.6145,
4.0877)

Have a look what the booklet for
HunterLab(66.2164, 3.6145, 4.0877)
contains.

HunterLab(66.2164, 3.6145, 4.0877)	3
<i>Conversions</i>	4
<i>Details</i>	6
<i>Harmonies</i>	12
<i>Previews</i>	24
<i>Color Blindness Simulation</i>	28
<i>CSS Examples</i>	31

Color

**HunterLab(66.2164, 3.6145,
4.0877)**

Conversions

Conversions Part 1

Format	Color
Hex	C0ACB0
RGB	192, 172, 176
RGB Percent	75%, 67%, 69%
CMY	0.2471, 0.3255, 0.3098
CMYK	0.00, 0.10, 0.08, 0.25
HSL	348°, 14%, 71%
HSV	348°, 10%, 75%
XYZ	44.3272, 43.8461, 47.2011
YIQ	178.4360, 10.6360, 5.4840

Conversions

Conversions Part 2

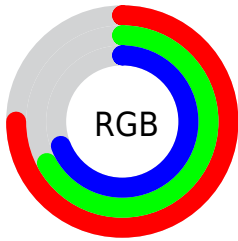
Format	Color
RYB	192, 172, 176
Decimal	12627120
CIELab	72.13, 7.89, 0.58
CIElCh	72, 7.914, 4.175
Yxy	43.8480, 0.3274, 0.3239
Android (android.graphics.Color)	4290817200 (0xFFC0ACB0)
YUV	178.4360, -1.2009, 11.8956
Hunter-Lab	66.2164, 3.6145, 4.0877

Details

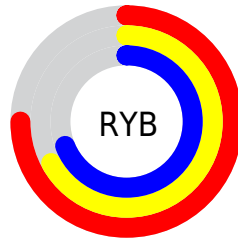
The HunterLab color $66.2164, 3.6145, 4.0877$ is a light color, and the websafe version is hex 999999 . A complement of this color would be $70.7827, -10.5356, 3.5774$, and the grayscale version is $66.9082, -3.5701, 3.6353$.

A 20% lighter version of the original color is $89.8448, 3.1945, 5.0373$, and $45.0460, 3.7336, 2.7240$ is the 20% darker color. If you saturate the color by 10%, you get $60.4033, 11.0189, 4.4802$, and if you desaturate by 10%, it is $72.3431, -3.5802, 3.9459$.

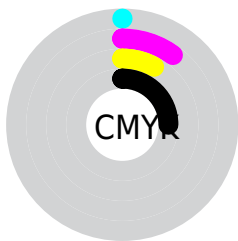
Distribution



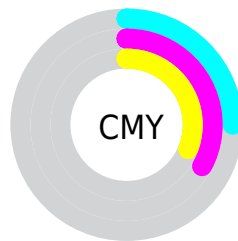
- Red (75%)
- Green (67%)
- Blue (69%)



- Red (75%)
- Yellow (67%)
- Blue (69%)



- Cyan (0%)
- Magenta (10%)
- Yellow (8%)
- Black (25%)



- Cyan (25%)
- Magenta (33%)
- Yellow (31%)

Brightness & Saturation Gradients

These gradients show how the HunterLab color 66.2164, 3.6145, 4.0877 changes by changing the brightness by 10 percent. The first figure shows a shift by +10% for each color and the second figure -10%.

Similar to the brightness gradients but the following saturation gradients show a change of the HunterLab color 66.2164, 3.6145, 4.0877 by changing the saturation by 10% instead.

■ 66.2164, 3.6145,
4.0877

■ 66.2164, 3.6145,
4.0877

190.2861, -0.1046,
11.0478

■ 55.2730, 3.7972,
3.4645

■ 89.9939, 3.0824,
5.4355

■ 45.0080, 3.9202,
2.8753

102.7628, 2.7454,
6.1550

■ 35.4714, 3.9739,
2.3234

116.0842, 2.3650,
6.9035

■ 26.7235, 3.9472,
1.8115

129.9362, 1.9440,
7.6800

■ 18.8434, 3.8245,
1.3427

144.2991, 1.4846,
8.4836

■ 11.9397, 3.5817,
0.9214

159.1554, 0.9889,

■ 4.8523, 6.8286,

9.3132

0.7563

174.4892, 0.4587,
10.1682

0.0000, NaN, NaN

0.0000, NaN, NaN

■ 66.2164, 3.6145,
4.0877

■ 66.2164, 3.6145,
4.0877

■ 60.4033, 11.0189,
4.4802

■ 72.3431, -3.5802,
3.9459

■ 54.9550, 18.6207,
5.1673

■ 78.7347, -10.5689,
4.0100

■ 49.9420, 26.3485,
6.1995

■ 85.3576, -17.3746,
4.2469

■ 45.4481, 34.0419,
7.6178

■ 92.1837, -24.0224,
4.6282

■ 41.5698, 41.4053,

■ 94.7664, -24.1987,

9.4365

-0.0724

■ 38.4069, 47.9804,
11.6134

■ 94.8402, -23.7795,
-1.1209

■ 36.0425, 53.1926,
14.0220

■ 34.5114, 56.5293,
16.4483

■ 33.6882, 58.1147,
18.4927

Harmonies

Analogous

The Analogous color harmony consists of three colors that are next to each other on the color wheel.



66.2179, 2.9028, 0.6282



66.2164, 3.6145, 4.0877



66.2179, 2.3731, 7.2476

Triad

The Triadic color harmony groups three colors that are evenly spaced from another and form a triangle on the color wheel.



66.2179, 3.6127, 4.0888



66.2179, -7.4349, 8.8958



66.2179, -6.5679, -2.6941

Complementary

The Complementary color scheme is a pair of colors which are on the opposite of each other on the color wheel.



66.2164, 3.6145, 4.0877



70.7827, -10.5356, 3.5774

Split Complementary

Split-complementary colors differ from the complementary color scheme. The scheme consists of three colors, the original color and two neighbors of the complement color.



66.2179, -9.2463, -0.2583



66.2164, 3.6145, 4.0877



66.2179, -9.7392, 6.4486

Square

The Square scheme is like the rectangle color scheme, but the four colors are evenly spaced on the color wheel.



66.2179, 3.6127, 4.0888



66.2179, -4.0471, 9.9260



66.2179, -10.3952, 3.1163



66.2179, -3.0248, -3.4093

Rectangle

The Rectangle color scheme consists of four colors that form a rectangle on the color wheel.



66.2164, 3.6145, 4.0877



66.2179, 0.6234, 8.7946



66.2179, -10.3952, 3.1163



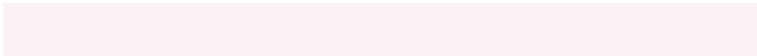
66.2179, -7.5967, -2.0432

Sweetspot

The Sweet Spot groups the original color and five complimentary colors.



66.2179, 3.6127, 4.0888



95.1712, -2.2971, 5.3330



66.3357, 5.0211, -3.6093



43.7686, -0.7024, 2.4750



98.8636, -5.2751, 5.3714



45.2661, -2.4153, 2.4594

Same Dimension

The Same Dimension uses a secret algorithm to generate beautiful new colors.



66.2179, 3.6127, 4.0888



87.7106, 6.6142, 5.5713



67.8436, -0.0490, 7.6931



31.7963, 1.3576, 1.9328



27.6507, 47.7320, 14.9272



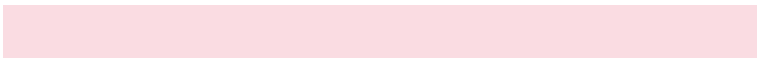
5.8338, 10.2395, 1.8404

Inverse Universe

The Inverse Universe completely reimagines the original color for something new.



66.2179, 3.6127, 4.0888



87.7106, 6.6142, 5.5713



69.0620, -6.9069, -0.3785



31.7963, 1.3576, 1.9328



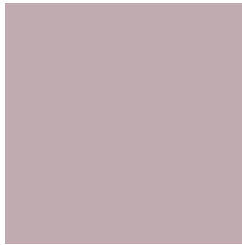
27.6507, 47.7320, 14.9272



5.8338, 10.2395, 1.8404

Previews

White Background



This preview shows how the HunterLab color 66.2164, 3.6145, 4.0877 looks on a white background.

Color Contrast Check

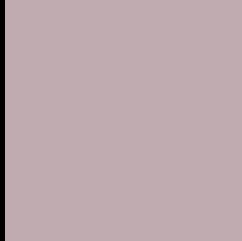
Large Text (above 18pt) WCAG AA × Fail

Any Text WCAG AA × Fail

Large Text (above 18pt) WCAG AAA × Fail

Any Text WCAG AAA × Fail

Black Background



This preview shows how the HunterLab color 66.2164, 3.6145, 4.0877 looks on a black background.

Color Contrast Check

Large Text (above 18pt) WCAG AA ✓ Pass

Any Text WCAG AA ✓ Pass

Large Text (above 18pt) WCAG AAA ✓ Pass

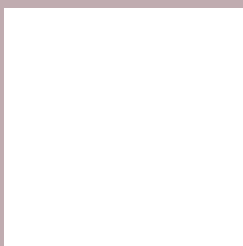
Any Text WCAG AAA ✓ Pass

If you want to check with other color combinations, try the [Color Contrast Checker](#).

HunterLab 66.2164, 3.6145, 4.0877 Background



This preview shows how black text looks on a background with the HunterLab color 66.2164, 3.6145, 4.0877.



This preview shows how white text looks on a background with the HunterLab color 66.2164, 3.6145,

Color Blindness Simulation

Color vision deficiency is a very complex topic, and I could not describe the different causes any better than Wikipedia does, so if you want to learn more, you should check out their [article about color blindness](#).

Dichromacy



Original Color

66.2164, 3.6145, 4.0877

Protanopia

66.3086, -1.9452, 3.1638

Deuteranopia

66.1285, 4.7918, 4.0052



Tritanopia

66.2752, 5.7751, 0.3716

Trichromacy



Original Color

66.2164, 3.6145, 4.0877

Protanomaly

66.3510, -0.3455, 3.7107

Deuteranomaly

66.0287, 4.4570, 3.8822

Tritanomaly

66.1812, 5.2731, 1.7088

Monochromacy



Original Color

66.2164, 3.6145, 4.0877

Achromatopsia

66.7234, -3.5602, 3.6252

Achromatomaly

66.5524, -1.1646, 3.9329

CSS Examples

Text

The CSS property to change the color of the text to HunterLab 66.2164, 3.6145, 4.0877 is called "color". The color property can be set on classes, ids or directly on the HTML element.

This example shows how text in the color `rgb(192, 172, 176)` looks like.

```
.text, #text, p{  
    color:rgb(192, 172, 176)  
}
```

If you want to add a text shadow in that color use the text-shadow property, you can generate a text shadow directly with our [CSS Text Shadow Generator](#).

Here you see how black text with a 4 pixel rgb(192, 172, 176) colored shadow looks like.

```
.shadow{ text-shadow: 4px 4px 2px rgb(192, 172, 176) }
```

Border

The CSS property to change the border of an element to HunterLab 66.2164, 3.6145, 4.0877 is called "border".

The border property can be set on classes, ids or directly on the HTML element.

This example shows the color as border, it can be applied via the CSS property "border" or "border-color".

```
.border, #border, table{ border:4px solid rgb(192, 172, 176) }
```


If only the border color should be changed use the property `border-color`.

```
.border{ border-color:rgb(192, 172, 176) }
```

If you want to add a box shadow in that color use:

Here you see how a box with a 4 pixel `rgb(192, 172, 176)` colored shadow looks like.

```
.boxshadow{ -moz-box-shadow:4px 4px 4px  
4px rgb(192, 172, 176); -webkit-box-  
shadow:4px 4px 4px 4px rgb(192, 172, 176);  
box-shadow:4px 4px 4px 4px rgb(192, 172,  
176) }
```

Background

The CSS property to change the background color of an element to HunterLab 66.2164, 3.6145, 4.0877 is called "background". The background property can be set on classes, ids or directly on the HTML element.

```
.background, #background, body{  
background: rgb(192, 172, 176) }
```

If only the background color should be changed can be used:

```
.background{ background-color: rgb(192,  
172, 176) }
```

This example shows the color as background, it is applied via the CSS property "background".

To optimize and compress your CSS code, you can use our [online CSS compressor and optimizer](#) based on csstidy. If you want to create a linear or radial gradient as background or border, check our [CSS Gradient Generator](#).

Hey! You found this booklet interesting? Support Converting Colors with the new Membership Option!

The pro membership hides all ads, plus gives you double the colors in the color bucket, and more awesome pro features!

[Learn more, Memberships starting at \\$2.50/m!](#)

**Follow me
on Twitter!**

@ConvertingColor