

# Converting Colors

HunterLab(66.2523, 7.4298,  
9.5233)

Have a look what the booklet for  
HunterLab(66.2523, 7.4298, 9.5233)  
contains.

<b>HunterLab(66.2523, 7.4298, 9.5233)</b> .....	3
<b><i>Conversions</i></b> .....	4
<b><i>Details</i></b> .....	6
<b><i>Harmonies</i></b> .....	12
<b><i>Previews</i></b> .....	24
<b><i>Color Blindness Simulation</i></b> .....	28
<b><i>CSS Examples</i></b> .....	31

# Color

**HunterLab(66.2523, 7.4298,  
9.5233)**

# Conversions

## Conversions Part 1

Format	Color
Hex	CCA9A4
RGB	204, 169, 164
RGB Percent	80%, 66%, 64%
CMY	0.2000, 0.3372, 0.3569
CMYK	0.00, 0.17, 0.20, 0.20
HSL	8°, 28%, 72%
HSV	8°, 20%, 80%
XYZ	45.7907, 43.8937, 41.1809
YIQ	178.8950, 22.4650, 5.8650

# Conversions

## Conversions Part 2

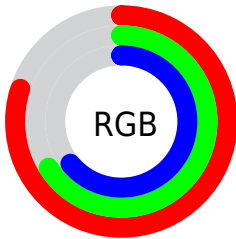
<b>Format</b>	<b>Color</b>
<b>R<sub>YB</sub></b>	204, 170, 164
Decimal	13412772
CIE <sub>Lab</sub>	72.16, 11.98, 7.36
CIE <sub>LCh</sub>	72, 14.057, 31.577
Yxy	43.8957, 0.3499, 0.3354
Android (android.graphics.Color)	4291602852 (0xFFCCA9A4)
YUV	178.8950, -7.3432, 22.0171
Hunter-Lab	66.2523, 7.4298, 9.5233

# Details

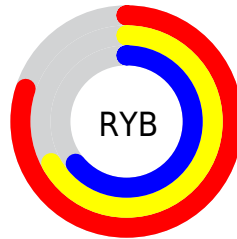
The HunterLab color **66.2523, 7.4298, 9.5233** is a light color, and the websafe version is hex **CC9999**. A complement of this color would be **72.8682, -13.2883, -1.8137**, and the grayscale version is **67.1211, -3.5814, 3.6468**.

A 20% lighter version of the original color is **89.2669, 5.1161, 10.5830**, and **45.0355, 7.1187, 7.6941** is the 20% darker color. If you saturate the color by 10%, you get **60.8463, 13.7902, 12.1793**, and if you desaturate by 10%, it is **71.9676, 1.3821, 6.8292**.

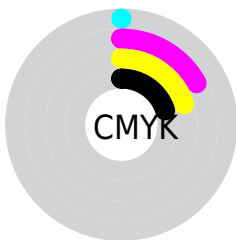
# Distribution



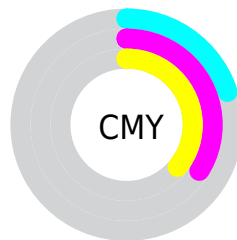
- Red (80%)
- Green (66%)
- Blue (64%)



- Red (80%)
- Yellow (67%)
- Blue (64%)



- Cyan (0%)
- Magenta (17%)
- Yellow (20%)
- Black (20%)




- Cyan (20%)
- Magenta (34%)
- Yellow (36%)


# Brightness & Saturation Gradients

These gradients show how the HunterLab color 66.2523, 7.4298, 9.5233 changes by changing the brightness by 10 percent. The first figure shows a shift by +10% for each color and the second figure -10%.


Similar to the brightness gradients but the following saturation gradients show a change of the HunterLab color 66.2523, 7.4298, 9.5233 by changing the saturation by 10% instead.



 66.2523, 7.4298,  
9.5233

 66.2523, 7.4298,  
9.5233

190.3372, 5.1790,  
18.9844

 55.3069, 7.4129,  
8.5477


 90.0337, 7.2680,  
11.5156

 45.0396, 7.3253,  
7.5804

 102.8044, 7.1046,  
12.5332

 35.5006, 7.1550,  
6.6182


116.1275, 6.8913,  
13.5667

 26.7501, 6.8882,  
5.6538

129.9812, 6.6315,  
14.6165

 18.8670, 6.5059,  
4.6749

144.3457, 6.3280,  
15.6830

 11.9600, 5.9798,  
3.6577

159.2035, 5.9833,

 4.8886, 10.4139,

16.7664

3.4220

174.5388, 5.5997,  
17.8669

0.0000, NaN, NaN

0.0000, NaN, NaN

■ 66.2523, 7.4298,  
9.5233

■ 66.2523, 7.4298,  
9.5233

■ 60.8463, 13.7902,  
12.1793

■ 71.9676, 1.3821,  
6.8292

■ 55.7964, 20.4673,  
14.7573

■ 77.9458, -4.3667,  
4.1152

■ 51.1660, 27.4116,  
17.1993

■ 84.1544, -9.8491,  
1.3943

■ 47.0275, 34.5011,  
19.4168

■ 90.5656, -15.0982,  
-1.3279

■ 43.4605, 41.5036,

■ 95.6961, -20.6483,

21.2892

-0.0097

■ 40.5437, 48.0560,  
22.6753

■ 38.3390, 53.6904,  
23.4519

■ 36.8616, 57.9122,  
23.6908

■ 36.8173, 58.0409,  
23.7027

# Harmonies

## Analogous

The Analogous color harmony consists of three colors that are next to each other on the color wheel.



66.2538, 9.3983, 3.9321



66.2523, 7.4298, 9.5233



66.2538, 2.5042, 13.2170

# Triad

The Triadic color harmony groups three colors that are evenly spaced from another and form a triangle on the color wheel.



66.2538, 7.4276, 9.5244



66.2538, -14.1567, 9.0098



66.2538, -3.1950, -9.3866

# Complementary

The Complementary color scheme is a pair of colors which are on the opposite of each other on the color wheel.



66.2523, 7.4298, 9.5233



72.8682, -13.2883, -1.8137

# Split Complementary

Split-complementary colors differ from the complementary color scheme. The scheme consists of three colors, the original color and two neighbors of the complement color.



66.2538, -9.3725, -7.7020



66.2523, 7.4298, 9.5233



66.2538, -15.5534, 3.2790

# Square

The Square scheme is like the rectangle color scheme, but the four colors are evenly spaced on the color wheel.



66.2538, 7.4276, 9.5244



66.2538, -9.9453, 12.9407



66.2538, -13.8351, -2.9135



66.2538, 3.1211, -7.3211



# Rectangle

The Rectangle color scheme consists of four colors that form a rectangle on the color wheel.



66.2523, 7.4298, 9.5233



66.2538, -1.7014, 14.3042



66.2538, -13.8351, -2.9135



66.2538, -5.3561, -9.2393

# Sweetspot

The Sweet Spot groups the original color and five complimentary colors.



66.2538, 7.4276, 9.5244



95.2933, -0.8741, 7.5576



65.9757, 15.8299, -7.8092



43.8533, -0.1759, 3.6033

0.0000, NaN, NaN



46.2646, -2.4686, 2.5136



# Same Dimension

The Same Dimension uses a secret algorithm to generate beautiful new colors.



66.2538, 7.4276, 9.5244



81.9343, 13.3598, 13.8733



71.9515, -2.5452, 15.3496



33.8172, 0.5898, 3.1766



29.3371, 45.6271, 18.8761



7.2160, 8.6582, 4.5981

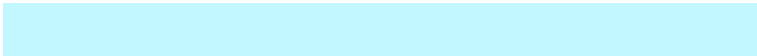


# Inverse Universe

The Inverse Universe completely reimagines the original color for something new.



72.8682, -13.2883, -1.8137



92.4095, -19.5243, -4.0999



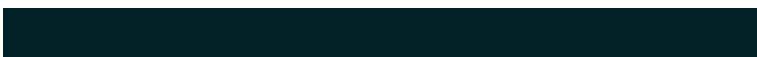
66.8032, -3.6212, -9.6016



35.3245, -4.1165, 0.5961



47.9578, -20.6973, -15.2636

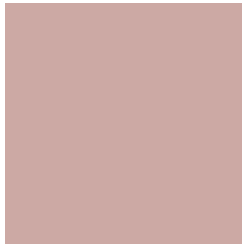


11.2039, -5.0967, -3.0016



# Previews

## White Background



This preview shows how the HunterLab color 66.2523, 7.4298, 9.5233 looks on a white background.

## Color Contrast Check

Large Text (above 18pt) WCAG AA × Fail

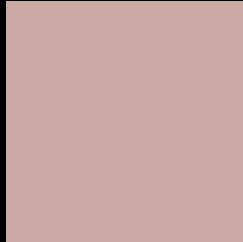
Any Text WCAG AA × Fail

Large Text (above 18pt) WCAG AAA × Fail

Any Text WCAG AAA × Fail



# Black Background



This preview shows how the HunterLab color 66.2523, 7.4298, 9.5233 looks on a black background.

## Color Contrast Check

Large Text (above 18pt) WCAG AA ✓ Pass

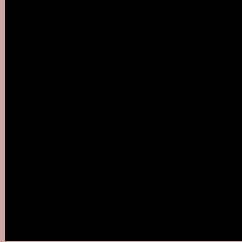
Any Text WCAG AA ✓ Pass

Large Text (above 18pt) WCAG AAA ✓ Pass

Any Text WCAG AAA ✓ Pass

If you want to check with other color combinations, try the [Color Contrast Checker](#).

## HunterLab 66.2523, 7.4298, 9.5233 Background



This preview shows how black text looks on a background with the HunterLab color 66.2523, 7.4298, 9.5233.



This preview shows how white text looks on a background with the HunterLab color 66.2523, 7.4298, 9.5233.

9.5233.

# Color Blindness Simulation

Color vision deficiency is a very complex topic, and I could not describe the different causes any better than Wikipedia does, so if you want to learn more, you should check out their [article about color blindness](#).

## Dichromacy



### Original Color

66.2523, 7.4298, 9.5233

### Protanopia

66.1989, -2.9095, 7.5610

### Deuteranopia

66.2935, 4.6592, 9.5198



## Tritanopia

66.3736, 11.6174, 2.5308

# Trichromacy



## Original Color

66.2523, 7.4298, 9.5233

## Protanomaly

66.0487, 1.0402, 7.8990

## Deuteranomaly

66.2173, 5.8642, 9.4578

## Tritanomaly

66.3629, 9.7977, 5.2876

# Monochromacy



## Original Color

66.2523, 7.4298, 9.5233

## Achromatopsia

67.1406, -3.5825, 3.6479

## Achromatomaly

66.6388, 0.4618, 5.4422

# CSS Examples

## Text

The CSS property to change the color of the text to HunterLab 66.2523, 7.4298, 9.5233 is called "color". The color property can be set on classes, ids or directly on the HTML element.

This example shows how text in the color `rgb(204, 169, 164)` looks like.

```
.text, #text, p{  
    color:rgb(204, 169, 164)  
}
```

If you want to add a text shadow in that color use the text-shadow property, you can generate a text shadow directly with our [CSS Text Shadow Generator](#).

Here you see how black text with a 4 pixel rgb(204, 169, 164) colored shadow looks like.

```
.shadow{ text-shadow: 4px 4px 2px rgb(204, 169, 164) }
```

## Border

The CSS property to change the border of an element to HunterLab 66.2523, 7.4298, 9.5233 is called "border". The border property can be set on classes, ids or directly on the HTML element.

This example shows the color as border, it can be applied via the CSS property "border" or "border-color".

```
.border, #border, table{ border:4px solid rgb(204, 169, 164) }
```



If only the border color should be changed use the property `border-color`.

```
.border{ border-color:rgb(204, 169, 164) }
```

If you want to add a box shadow in that color use:

Here you see how a box with a 4 pixel `rgb(204, 169, 164)` colored shadow looks like.

```
.boxshadow{ -moz-box-shadow:4px 4px 4px  
4px rgb(204, 169, 164); -webkit-box-  
shadow:4px 4px 4px 4px rgb(204, 169, 164);  
box-shadow:4px 4px 4px 4px rgb(204, 169,  
164) }
```

# Background

The CSS property to change the background color of an element to HunterLab 66.2523, 7.4298, 9.5233 is called "background". The background property can be set on classes, ids or directly on the HTML element.

```
.background, #background, body{  
background: rgb(204, 169, 164) }
```

If only the background color should be changed can be used:

```
.background{ background-color: rgb(204,  
169, 164) }
```

This example shows the color as background, it is applied via the CSS property "background".

To optimize and compress your CSS code, you can use our [online CSS compressor and optimizer](#) based on csstidy. If you want to create a linear or radial gradient as background or border, check our [CSS Gradient Generator](#).

Hey! You found this booklet interesting? Support Converting Colors with the new Membership Option!

The pro membership hides all ads, plus gives you double the colors in the color bucket, and more awesome pro features!

**[Learn more, Memberships starting at \\$2.50/m!](#)**

**Follow me  
on Twitter!**

@ConvertingColor