

Converting Colors

HunterLab(66.3310, 11.1771,
4.8162)

Have a look what the booklet for
HunterLab(66.3310, 11.1771,
4.8162) contains.

HunterLab(66.3310, 11.1771, 4.8162)	3
<i>Conversions</i>	4
<i>Details</i>	6
<i>Harmonies</i>	12
<i>Previews</i>	24
<i>Color Blindness Simulation</i>	28
<i>CSS Examples</i>	31

Color

**HunterLab(66.3310, 11.1771,
4.8162)**

Conversions

Conversions Part 1

Format	Color
Hex	CFA7AF
RGB	207, 167, 175
RGB Percent	81%, 65%, 69%
CMY	0.1882, 0.3451, 0.3137
CMYK	0.00, 0.19, 0.15, 0.19
HSL	348°, 29%, 73%
HSV	348°, 19%, 81%
XYZ	47.2887, 43.9980, 46.5576
YIQ	179.8720, 21.2720, 10.9680

Conversions

Conversions Part 2

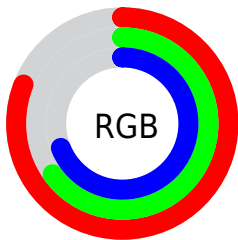
Format	Color
R _Y B	207, 167, 175
Decimal	13608879
CIE Lab	72.23, 15.90, 1.44
CIE LCh	72, 15.969, 5.183
Yxy	44.0000, 0.3431, 0.3192
Android (android.graphics.Color)	4291798959 (0xFFCFA7AF)
YUV	179.8720, -2.4019, 23.7913
Hunter-Lab	66.3310, 11.1771, 4.8162

Details

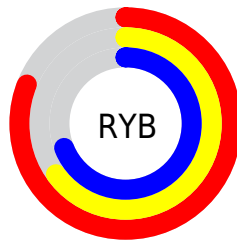
The HunterLab color $66.3310, 11.1771, 4.8162$ is a light color, and the websafe version is hex $CC9999$. A complement of this color would be $75.4757, -17.2386, 3.7582$, and the grayscale version is $67.5095, -3.6021, 3.6679$.

A 20% lighter version of the original color is $89.0032, 7.9855, 5.1128$, and $45.1297, 10.6286, 3.3762$ is the 20% darker color. If you saturate the color by 10%, you get $60.3334, 19.4682, 5.5344$, and if you desaturate by 10%, it is $72.7272, 3.1005, 4.4200$.

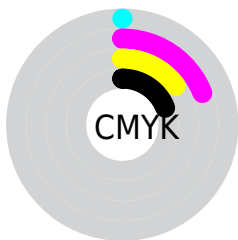
Distribution



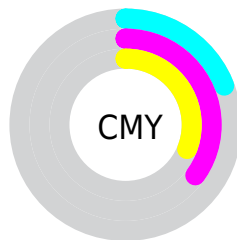
- Red (81%)
- Green (65%)
- Blue (69%)



- Red (81%)
- Yellow (65%)
- Blue (69%)



- Cyan (0%)
- Magenta (19%)
- Yellow (15%)
- Black (19%)



- Cyan (19%)
- Magenta (35%)
- Yellow (31%)

Brightness & Saturation Gradients

These gradients show how the HunterLab color 66.3310, 11.1771, 4.8162 changes by changing the brightness by 10 percent. The first figure shows a shift by +10% for each color and the second figure -10%.

Similar to the brightness gradients but the following saturation gradients show a change of the HunterLab color 66.3310, 11.1771, 4.8162 by changing the saturation by 10% instead.

66.3310, 11.1771,
4.8162

66.3310, 11.1771,
4.8162

190.4490, 10.3137,
12.0900

55.3810, 10.9739,
4.1494

90.1209, 11.3635,
6.2444

45.1088, 10.6904,
3.5136

102.8955, 11.3638,
7.0011

35.5645, 10.3128,
2.9114

116.2224, 11.3083,
7.7854

26.8083, 9.8260,
2.3444

130.0797, 11.2009,
8.5962

18.9188, 9.2093,
1.8143

144.4477, 11.0450,
9.4328

12.0045, 8.4345,
1.3223

159.3089, 10.8435,

4.9670, 13.6871,

10.2944

1.4742

174.6475, 10.5990,
11.1804

0.0000, NaN, NaN

0.0000, NaN, NaN

■ 66.3310, 11.1771,
4.8162

■ 66.3310, 11.1771,
4.8162

■ 60.3334, 19.4682,
5.5344

■ 72.7272, 3.1005,
4.4200

■ 54.8048, 27.9104,
6.6255

■ 79.4577, -4.7395,
4.2905

■ 49.8378, 36.3359,
8.1378

■ 86.4763, -12.3573,
4.3841

■ 45.5377, 44.4331,
10.0907

■ 93.7451, -19.7772,
4.6636

■ 42.0152, 51.7102,

■ 95.9195, -19.8360,

12.4440

0.2787

■ 39.3647, 57.5382,
15.0661

■ 37.6295, 61.3364,
17.7265

■ 36.6972, 63.0970,
20.1006

■ 36.6446, 63.1993,
20.2352

Harmonies

Analogous

The Analogous color harmony consists of three colors that are next to each other on the color wheel.



66.3325, 9.8216, -2.3030



66.3310, 11.1771, 4.8162



66.3325, 8.4465, 10.9207

Triad

The Triadic color harmony groups three colors that are evenly spaced from another and form a triangle on the color wheel.



66.3325, 11.1749, 4.8174



66.3325, -11.5155, 13.7145



66.3325, -9.3891, -9.8336

Complementary

The Complementary color scheme is a pair of colors which are on the opposite of each other on the color wheel.



66.3310, 11.1771, 4.8162



75.4757, -17.2386, 3.7582

Split Complementary

Split-complementary colors differ from the complementary color scheme. The scheme consists of three colors, the original color and two neighbors of the complement color.



66.3325, -14.7370, -4.6394



66.3310, 11.1771, 4.8162



66.3325, -15.9265, 9.0255

Square

The Square scheme is like the rectangle color scheme, but the four colors are evenly spaced on the color wheel.



66.3325, 11.1749, 4.8174



66.3325, -4.8187, 15.6865



66.3325, -17.0798, 2.3808



66.3325, -2.2574, -11.2736

Rectangle

The Rectangle color scheme consists of four colors that form a rectangle on the color wheel.



66.3310, 11.1771, 4.8162



66.3325, 4.7473, 13.7557



66.3325, -17.0798, 2.3808



66.3325, -11.4449, -8.4429

Sweetspot

The Sweet Spot groups the original color and five complimentary colors.



66.3325, 11.1749, 4.8174



94.7946, 0.6682, 5.5080



66.5482, 13.9948, -11.3418



43.5982, 0.6146, 2.5552

0.0000, NaN, NaN



46.2646, -2.4686, 2.5136

Same Dimension

The Same Dimension uses a secret algorithm to generate beautiful new colors.



66.3325, 11.1749, 4.8174



80.9047, 18.2707, 6.4055



69.4964, 3.7970, 11.6976



34.4185, 1.5037, 2.0947



29.1054, 50.2338, 15.7852



6.9656, 12.1854, 2.5117

Inverse Universe

The Inverse Universe completely reimagines the original color for something new.



66.3325, 11.1749, 4.8174



80.9047, 18.2707, 6.4055



71.9390, -9.9794, -4.4986



34.4185, 1.5037, 2.0947



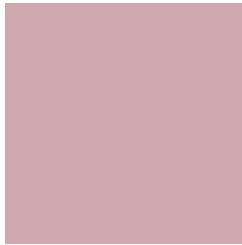
29.1054, 50.2338, 15.7852



6.9656, 12.1854, 2.5117

Previews

White Background



This preview shows how the HunterLab color 66.3310, 11.1771, 4.8162 looks on a white background.

Color Contrast Check

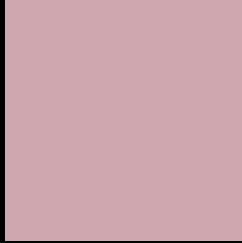
Large Text (above 18pt) WCAG AA × Fail

Any Text WCAG AA × Fail

Large Text (above 18pt) WCAG AAA × Fail

Any Text WCAG AAA × Fail

Black Background



This preview shows how the HunterLab color 66.3310, 11.1771, 4.8162 looks on a black background.

Color Contrast Check

Large Text (above 18pt) WCAG AA ✓ Pass

Any Text WCAG AA ✓ Pass

Large Text (above 18pt) WCAG AAA ✓ Pass

Any Text WCAG AAA ✓ Pass

If you want to check with other color combinations, try the [Color Contrast Checker](#).

HunterLab 66.3310, 11.1771, 4.8162 Background



This preview shows how black text looks on a background with the HunterLab color 66.3310, 11.1771, 4.8162.



This preview shows how white text looks on a background with the HunterLab color 66.3310, 11.1771,

4.8162.

Color Blindness Simulation

Color vision deficiency is a very complex topic, and I could not describe the different causes any better than Wikipedia does, so if you want to learn more, you should check out their [article about color blindness](#).

Dichromacy



Original Color

66.3310, 11.1771, 4.8162

Protanopia

66.2795, -1.9238, 2.1809

Deuteranopia

66.5558, 4.6377, 5.4198



Tritanopia

66.2850, 12.6832, 2.9193

Trichromacy



Original Color

66.3310, 11.1771, 4.8162

Protanomaly

66.2724, 2.4418, 3.1977

Deuteranomaly

66.3964, 7.0267, 5.2777

Tritanomaly

66.2546, 12.5239, 3.3531

Monochromacy



Original Color

66.3310, 11.1771, 4.8162

Achromatopsia

67.5582, -3.6047, 3.6706

Achromatomaly

66.9488, 1.7556, 3.9832

CSS Examples

Text

The CSS property to change the color of the text to HunterLab 66.3310, 11.1771, 4.8162 is called "color". The color property can be set on classes, ids or directly on the HTML element.

This example shows how text in the color `rgb(207, 167, 175)` looks like.

```
.text, #text, p{  
    color:rgb(207, 167, 175)  
}
```

If you want to add a text shadow in that color use the text-shadow property, you can generate a text shadow directly with our [CSS Text Shadow Generator](#).

Here you see how black text with a 4 pixel rgb(207, 167, 175) colored shadow looks like.

```
.shadow{ text-shadow: 4px 4px 2px rgb(207, 167, 175) }
```

Border

The CSS property to change the border of an element to HunterLab 66.3310, 11.1771, 4.8162 is called "border". The border property can be set on classes, ids or directly on the HTML element.

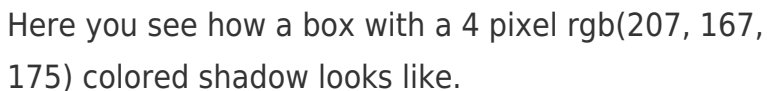
This example shows the color as border, it can be applied via the CSS property "border" or "border-color".

```
.border, #border, table{ border:4px solid rgb(207, 167, 175) }
```


If only the border color should be changed use the property `border-color`.

```
.border{ border-color:rgb(207, 167, 175) }
```

If you want to add a box shadow in that color use:



Here you see how a box with a 4 pixel `rgb(207, 167, 175)` colored shadow looks like.

```
.boxshadow{ -moz-box-shadow:4px 4px 4px 4px rgb(207, 167, 175); -webkit-box-shadow:4px 4px 4px 4px rgb(207, 167, 175); box-shadow:4px 4px 4px 4px rgb(207, 167, 175) }
```

Background

The CSS property to change the background color of an element to HunterLab 66.3310, 11.1771, 4.8162 is called "background". The background property can be set on classes, ids or directly on the HTML element.

```
.background, #background, body{  
background: rgb(207, 167, 175) }
```

If only the background color should be changed can be used:

```
.background{ background-color: rgb(207,  
167, 175) }
```

This example shows the color as background, it is applied via the CSS property "background".

To optimize and compress your CSS code, you can use our [online CSS compressor and optimizer](#) based on csstidy. If you want to create a linear or radial gradient as background or border, check our [CSS Gradient Generator](#).

Hey! You found this booklet interesting? Support Converting Colors with the new Membership Option!

The pro membership hides all ads, plus gives you double the colors in the color bucket, and more awesome pro features!

[Learn more, Memberships starting at \\$2.50/m!](#)

**Follow me
on Twitter!**

@ConvertingColor