

Converting Colors

HunterLab(66.3476, -1.4089,
1.7262)

Have a look what the booklet for
HunterLab(66.3476, -1.4089, 1.7262)
contains.

HunterLab(66.4004, -1.4448, 1.8556)	3
<i>Conversions</i>	4
<i>Details</i>	6
<i>Harmonies</i>	12
<i>Previews</i>	24
<i>Color Blindness Simulation</i>	28
<i>CSS Examples</i>	31

Color

**HunterLab(66.4004, -1.4448,
1.8556)**

Conversions

Conversions Part 1

Format	Color
Hex	B4B0B5
RGB	180, 176, 181
RGB Percent	71%, 69%, 71%
CMY	0.2941, 0.3098, 0.2902
CMYK	0.01, 0.03, 0.00, 0.29
HSL	288°, 3%, 70%
HSV	288°, 3%, 71%
XYZ	42.6882, 44.0901, 49.9763
YIQ	177.7660, 0.7790, 2.4030

Conversions

Conversions Part 2

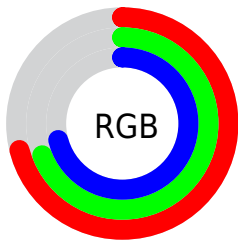
Format	Color
RYB	180, 176, 181
Decimal	11841717
CIELab	72.29, 2.35, -2.05
CIELCh	72, 3.121, 318.866
Yxy	44.0920, 0.3122, 0.3224
Android (android.graphics.Color)	4290031797 (0xFFB4B0B5)
YUV	177.7660, 1.5944, 1.9592
Hunter-Lab	66.4004, -1.4448, 1.8556

Details

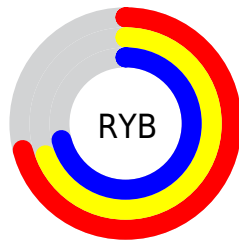
The HunterLab color $66.4004, -1.4448, 1.8556$ is a light color, and the websafe version is hex 999999 . A complement of this color would be $67.4763, -5.6727, 5.3862$, and the grayscale version is $66.6204, -3.5547, 3.6196$.

A 20% lighter version of the original color is $90.3662, -2.6164, 3.0695$, and $45.2613, -0.8985, 1.1222$ is the 20% darker color. If you saturate the color by 10%, you get $60.8536, 6.5585, -4.9809$, and if you desaturate by 10%, it is $72.1874, -9.2869, 8.4130$.

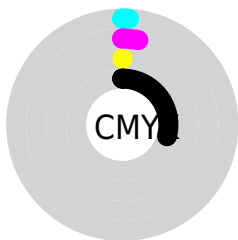
Distribution



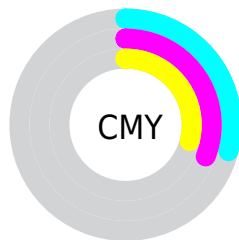
- Red (71%)
- Green (69%)
- Blue (71%)



- Red (71%)
- Yellow (69%)
- Blue (71%)



- Cyan (1%)
- Magenta (3%)
- Yellow (0%)
- Black (29%)



- Cyan (29%)
- Magenta (31%)
- Yellow (29%)

Brightness & Saturation Gradients

These gradients show how the HunterLab color 66.4004, -1.4448, 1.8556 changes by changing the brightness by 10 percent. The first figure shows a shift by +10% for each color and the second figure -10%.

Similar to the brightness gradients but the following saturation gradients show a change of the HunterLab color 66.4004, -1.4448, 1.8556 by changing the saturation by 10% instead.

■ 66.4004, -1.4448,
1.8556

■ 66.4004, -1.4448,
1.8556

190.5475, -7.2021,
7.8911

■ 55.4462, -0.9822,
1.3601

■ 90.1977, -2.4942,
2.9679

■ 45.1698, -0.5621,
0.9068

102.9757, -3.0729,
3.5776

■ 35.6208, -0.1906,
0.5008

116.3060, -3.6852,
4.2209

■ 26.8595, 0.1266,
0.1476

130.1664, -4.3297,
4.8961

■ 18.9645, 0.3813,
-0.1457

144.5375, -5.0048,
5.6019

■ 12.0437, 0.5612,
-0.3680

159.4018, -5.7093,

■ 5.0350, 1.7651,

6.3371

-1.4159

174.7432, -6.4421,
7.1004

0.0000, NaN, NaN

0.0000, NaN, NaN

■ 66.4004, -1.4448,
1.8556

■ 66.4004, -1.4448,
1.8556

■ 60.8536, 6.5585,
-4.9809

■ 72.1874, -9.2869,
8.4130

■ 55.5803, 14.7214,
-12.1285

■ 78.1801, -16.9731,
14.7234

■ 50.6286, 23.0044,
-19.5957

■ 84.3557, -24.5219,
20.8237

■ 46.0561, 31.3124,
-27.3506

■ 90.6943, -31.9527,
26.7469

■ 41.9317, 39.4568,

■ 93.2080, -34.0017,

-35.2850

29.0307

■ 38.3340, 47.1148,
-43.1692

■ 93.4751, -32.9912,
29.2924

■ 35.3437, 53.8083,
-50.6151

■ 93.7477, -31.9629,
29.5591

■ 33.0278, 58.9535,
-57.0946

■ 94.0258, -30.9170,
29.8306

■ 31.4115, 62.0372,
-62.0745

■ 94.3096, -29.8537,
30.1069

Harmonies

Analogous

The Analogous color harmony consists of three colors that are next to each other on the color wheel.



66.4018, -2.6481, 1.0710



66.4004, -1.4448, 1.8556



66.4018, -0.8055, 3.1033

Triad

The Triadic color harmony groups three colors that are evenly spaced from another and form a triangle on the color wheel.



66.4018, -1.4464, 1.8567



66.4018, -3.0106, 6.1494



66.4018, -6.1488, 2.7563

Complementary

The Complementary color scheme is a pair of colors which are on the opposite of each other on the color wheel.



66.4004, -1.4448, 1.8556



67.4763, -5.6727, 5.3862

Split Complementary

Split-complementary colors differ from the complementary color scheme. The scheme consists of three colors, the original color and two neighbors of the complement color.



66.4018, -6.2440, 4.1215



66.4004, -1.4448, 1.8556



66.4018, -4.4403, 6.0610

Square

The Square scheme is like the rectangle color scheme, but the four colors are evenly spaced on the color wheel.



66.4018, -1.4464, 1.8567



66.4018, -1.7137, 5.5695



66.4018, -5.6210, 5.3254



66.4018, -5.3598, 1.5980

Rectangle

The Rectangle color scheme consists of four colors that form a rectangle on the color wheel.



66.4004, -1.4448, 1.8556



66.4018, -0.7861, 4.0195



66.4018, -5.6210, 5.3254



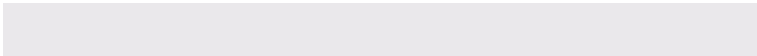
66.4018, -6.2627, 3.2068

Sweetspot

The Sweet Spot groups the original color and five complimentary colors.



66.4018, -1.4464, 1.8567



90.1920, -3.7812, 4.0407



66.3668, -3.2180, 1.7835



41.9499, -1.7845, 1.9010



95.4677, -5.0939, 5.1869



42.2927, -2.2566, 2.2978

Same Dimension

The Same Dimension uses a secret algorithm to generate beautiful new colors.



66.4018, -1.4464, 1.8567



88.6437, -1.6287, 2.2254



66.4490, -1.3710, 2.5909



30.7099, -0.3180, 0.5644



25.4270, 52.5893, -53.6841



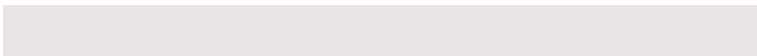
4.7464, 9.6529, -8.7513

Inverse Universe

The Inverse Universe completely reimagines the original color for something new.



66.3707, -1.7973, 3.7064



88.5978, -2.1473, 4.9632



67.4314, -5.7470, 4.6840



30.6905, -0.5385, 1.7322



26.2092, 45.2540, 14.0689



4.7357, 8.3462, 1.2295

Previews

White Background



This preview shows how the HunterLab color 66.4004, -1.4448, 1.8556 looks on a white background.

Color Contrast Check

Large Text (above 18pt) WCAG AA × Fail

Any Text WCAG AA × Fail

Large Text (above 18pt) WCAG AAA × Fail

Any Text WCAG AAA × Fail

Black Background



This preview shows how the HunterLab color 66.4004, -1.4448, 1.8556 looks on a black background.

Color Contrast Check

Large Text (above 18pt) WCAG AA ✓ Pass

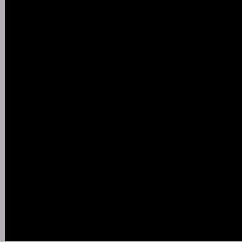
Any Text WCAG AA ✓ Pass

Large Text (above 18pt) WCAG AAA ✓ Pass

Any Text WCAG AAA ✓ Pass

If you want to check with other color combinations, try the [Color Contrast Checker](#).

HunterLab 66.4004, -1.4448, 1.8556 Background



This preview shows how black text looks on a background with the HunterLab color 66.4004, -1.4448, 1.8556.



This preview shows how white text looks on a background with the HunterLab color 66.4004, -1.4448,

Color Blindness Simulation

Color vision deficiency is a very complex topic, and I could not describe the different causes any better than Wikipedia does, so if you want to learn more, you should check out their [article about color blindness](#).

Dichromacy



Original Color

66.4004, -1.4448, 1.8556

Protanopia

66.3103, -1.7556, 1.7415

Deuteranopia

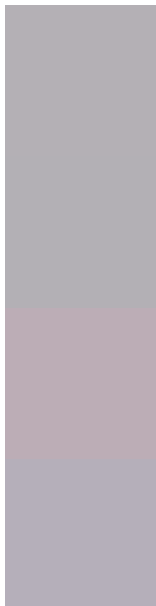
66.3995, 4.5965, 1.4781



Tritanopia

66.4514, 0.7504, -1.9956

Trichromacy



Original Color

66.4004, -1.4448, 1.8556

Protanomaly

66.3103, -1.7556, 1.7415

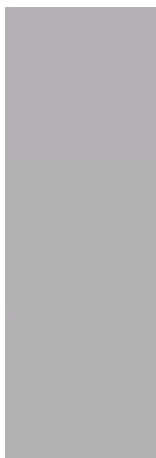
Deuteranomaly

66.2992, 2.7787, 1.3248

Tritanomaly

66.3543, 0.2243, -0.6176

Monochromacy



Original Color

66.4004, -1.4448, 1.8556

Achromatopsia

66.7234, -3.5602, 3.6252

Achromatomaly

66.5452, -2.5889, 2.9615

CSS Examples

Text

The CSS property to change the color of the text to HunterLab 66.4004, -1.4448, 1.8556 is called "color". The color property can be set on classes, ids or directly on the HTML element.

This example shows how text in the color `rgb(180, 176, 181)` looks like.

```
.text, #text, p{  
    color:rgb(180, 176, 181)  
}
```

If you want to add a text shadow in that color use the text-shadow property, you can generate a text shadow directly with our [CSS Text Shadow Generator](#).

Here you see how black text with a 4 pixel rgb(180, 176, 181) colored shadow looks like.

```
.shadow{ text-shadow: 4px 4px 2px rgb(180, 176, 181) }
```

Border

The CSS property to change the border of an element to HunterLab 66.4004, -1.4448, 1.8556 is called "border". The border property can be set on classes, ids or directly on the HTML element.

This example shows the color as border, it can be applied via the CSS property "border" or "border-color".

```
.border, #border, table{ border:4px solid rgb(180, 176, 181) }
```


If only the border color should be changed use the property `border-color`.

```
.border{ border-color:rgb(180, 176, 181) }
```

If you want to add a box shadow in that color use:

Here you see how a box with a 4 pixel `rgb(180, 176, 181)` colored shadow looks like.

```
.boxshadow{ -moz-box-shadow:4px 4px 4px  
4px rgb(180, 176, 181); -webkit-box-  
shadow:4px 4px 4px 4px rgb(180, 176, 181);  
box-shadow:4px 4px 4px 4px rgb(180, 176,  
181) }
```

Background

The CSS property to change the background color of an element to HunterLab 66.4004, -1.4448, 1.8556 is called "background". The background property can be set on classes, ids or directly on the HTML element.

```
.background, #background, body{  
background: rgb(180, 176, 181) }
```

If only the background color should be changed can be used:

```
.background{ background-color: rgb(180,  
176, 181) }
```

This example shows the color as background, it is applied via the CSS property "background".

To optimize and compress your CSS code, you can use our [online CSS compressor and optimizer](#) based on csstidy. If you want to create a linear or radial gradient as background or border, check our [CSS Gradient Generator](#).

Hey! You found this booklet interesting? Support Converting Colors with the new Membership Option!

The pro membership hides all ads, plus gives you double the colors in the color bucket, and more awesome pro features!

[Learn more, Memberships starting at \\$2.50/m!](#)

**Follow me
on Twitter!**

@ConvertingColor