

# Converting Colors

HunterLab(66.5040, -0.6908,  
11.6221)

Have a look what the booklet for  
HunterLab(66.5040, -0.6908,  
11.6221) contains.

<b>HunterLab(66.5128, -0.8004, 11.7319)</b> .....	3
<b><i>Conversions</i></b> .....	4
<b><i>Details</i></b> .....	6
<b><i>Harmonies</i></b> .....	12
<b><i>Previews</i></b> .....	24
<b><i>Color Blindness Simulation</i></b> .....	28
<b><i>CSS Examples</i></b> .....	31

# Color

**HunterLab(66.5128, -0.8004,  
11.7319)**

# Conversions

## Conversions Part 1

Format	Color
Hex	BFAF9F
RGB	191, 175, 159
RGB Percent	75%, 69%, 62%
CMY	0.2510, 0.3137, 0.3765
CMYK	0.00, 0.08, 0.17, 0.25
HSL	30°, 20%, 69%
HSV	30°, 17%, 75%
XYZ	43.0738, 44.2395, 39.0697
YIQ	177.9600, 14.6720, -1.5840

# Conversions

## Conversions Part 2

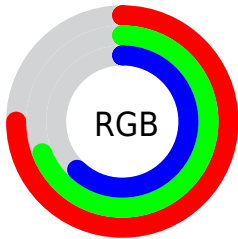
Format	Color
<a href="#">RYB</a>	<a href="#">191, 191, 159</a>
Decimal	<a href="#">12562335</a>
CIELab	<a href="#">72.39, 3.07, 10.27</a>
CIELCh	<a href="#">72, 10.723, 73.362</a>
Yxy	<a href="#">44.2415, 0.3408, 0.3500</a>
Android (android.graphics.Color)	<a href="#">4290752415</a> ( <a href="#">0xFFBFAF9F</a> )
YUV	<a href="#">177.9600, -9.3473, 11.4361</a>
Hunter-Lab	<a href="#">66.5128, -0.8004, 11.7319</a>

# Details

The HunterLab color **66.5128, -0.8004, 11.7319** is a light color, and the websafe version is hex **999999**. A complement of this color would be **64.6464, -5.3575, -5.4655**, and the grayscale version is **66.7414, -3.5612, 3.6262**.

A 20% lighter version of the original color is **90.2248, -1.3119, 13.7672**, and **45.3508, -0.2262, 9.3930** is the 20% darker color. If you saturate the color by 10%, you get **63.2791, 1.3901, 15.8055**, and if you desaturate by 10%, it is **69.8612, -2.7117, 7.2092**.

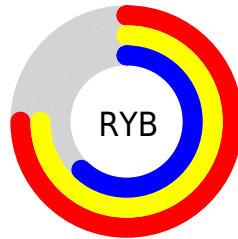
# Distribution



Red (75%)

Green (69%)

Blue (62%)



Red (75%)

Yellow (75%)

Blue (62%)

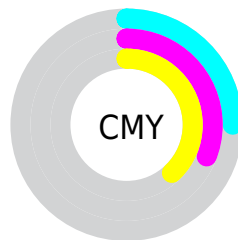


Cyan (0%)

Magenta (8%)

Yellow (17%)

Black (25%)



Cyan (25%)

Magenta (31%)

Yellow (38%)

# Brightness & Saturation Gradients

These gradients show how the HunterLab color 66.5128, -0.8004, 11.7319 changes by changing the brightness by 10 percent. The first figure shows a shift by +10% for each color and the second figure -10%.

Similar to the brightness gradients but the following saturation gradients show a change of the HunterLab color 66.5128, -0.8004, 11.7319 by changing the saturation by 10% instead.



■ 66.5128, -0.8004,  
11.7319

■ 66.5128, -0.8004,  
11.7319

190.7073, -6.2946,  
22.3110

■ 55.5521, -0.3745,  
10.5965

■ 90.3222, -1.7832,  
14.0146

■ 45.2687, 0.0070,  
9.4570

■ 103.1059, -2.3306,  
15.1659

■ 35.7122, 0.3371,  
8.3067

116.4415, -2.9129,  
16.3268

■ 26.9427, 0.6094,  
7.1336

130.3072, -3.5285,  
17.4986

■ 19.0385, 0.8147,  
5.9173

144.6833, -4.1758,  
18.6823

■ 12.1074, 0.9386,  
4.6793

159.5523, -4.8534,

■ 5.1434, 2.3264,

19.8786

3.6004

174.8985, -5.5600,  
21.0880

0.0000, NaN, NaN

0.0000, NaN, NaN

■ 66.5128, -0.8004,  
11.7319

■ 66.5128, -0.8004,  
11.7319

■ 63.2791, 1.3901,  
15.8055

■ 69.8612, -2.7117,  
7.2092

■ 60.1652, 3.8851,  
19.3784

■ 73.3111, -4.3584,  
2.2790

■ 57.1832, 6.6992,  
22.4002

■ 76.8561, -5.7629,  
-3.0177

■ 54.3445, 9.8440,  
24.8186

■ 80.4891, -6.9449,  
-8.6454

■ 51.6609, 13.3228,

■ 84.2038, -7.9229,

26.5847

-14.5726

■ 49.1446, 17.1261,  
27.6598

■ 87.2776, -12.6915,  
-10.7117

■ 46.8071, 21.2254,  
28.0273

■ 90.3908, -17.5016,  
-6.6640

■ 44.6569, 25.5609,  
27.7284

■ 93.5589, -22.2503,  
-2.6936

■ 43.9948, 26.9794,  
27.5817

■ 94.7715, -24.0319,  
-1.2105

# Harmonies

## Analogous

The Analogous color harmony consists of three colors that are next to each other on the color wheel.



66.5143, 3.5176, 9.5482



66.5128, -0.8004, 11.7319



66.5143, -5.7404, 11.8494

# Triad

The Triadic color harmony groups three colors that are evenly spaced from another and form a triangle on the color wheel.



66.5143, -0.8024, 11.7329



66.5143, -12.5716, 1.4915



66.5143, 3.1170, -3.3122

# Complementary

The Complementary color scheme is a pair of colors which are on the opposite of each other on the color wheel.



66.5128, -0.8004, 11.7319



64.6464, -5.3575, -5.4655

# Split Complementary

Split-complementary colors differ from the complementary color scheme. The scheme consists of three colors, the original color and two neighbors of the complement color.



66.5143, -1.3362, -5.8157



66.5128, -0.8004, 11.7319



66.5143, -10.3393, -2.9085

# Square

The Square scheme is like the rectangle color scheme, but the four colors are evenly spaced on the color wheel.



66.5143, -0.8024, 11.7329



66.5143, -12.4381, 6.1639



66.5143, -6.2589, -5.6628



66.5143, 5.8253, 0.9727



# Rectangle

The Rectangle color scheme consists of four colors that form a rectangle on the color wheel.



66.5128, -0.8004, 11.7319



66.5143, -8.7119, 10.7548



66.5143, -6.2589, -5.6628



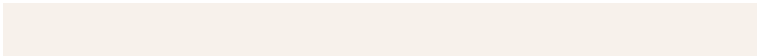
66.5143, 1.7689, -4.4035

# Sweetspot

The Sweet Spot groups the original color and five complimentary colors.



66.5143, -0.8024, 11.7329



94.2576, -4.0218, 8.5797



62.4247, 9.7737, 0.1156



44.0173, -1.8070, 4.2341



98.8636, -5.2751, 5.3714



45.2661, -2.4153, 2.4594

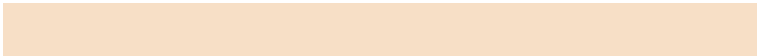


# Same Dimension

The Same Dimension uses a secret algorithm to generate beautiful new colors.



66.5143, -0.8024, 11.7329



87.4543, -0.0732, 17.7164



71.3033, -8.6858, 16.5096



32.0990, -1.0437, 3.9190



35.8903, 21.3492, 22.4892



7.9713, 2.3575, 4.9532



# Inverse Universe

The Inverse Universe completely reimagines the original color for something new.



64.6464, -5.3575, -5.4655



84.4353, -7.4251, -10.0905



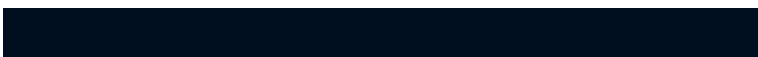
59.9412, 2.6081, -11.7740



31.6102, -2.2377, -0.5785



28.4052, 6.7119, -49.9930

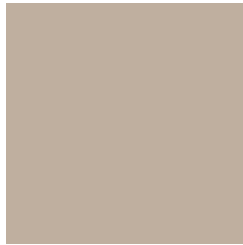


6.6852, -0.5615, -7.1438



# Previews

## White Background



This preview shows how the HunterLab color 66.5128, -0.8004, 11.7319 looks on a white background.

## Color Contrast Check

Large Text (above 18pt) WCAG AA × Fail

Any Text WCAG AA × Fail

Large Text (above 18pt) WCAG AAA × Fail

Any Text WCAG AAA × Fail



# Black Background



This preview shows how the HunterLab color 66.5128, -0.8004, 11.7319 looks on a black background.

## Color Contrast Check

Large Text (above 18pt) WCAG AA ✓ Pass

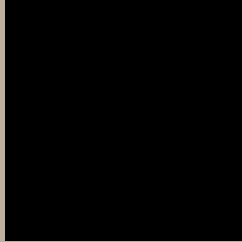
Any Text WCAG AA ✓ Pass

Large Text (above 18pt) WCAG AAA ✓ Pass

Any Text WCAG AAA ✓ Pass

If you want to check with other color combinations, try the [Color Contrast Checker](#).

# HunterLab 66.5128, -0.8004, 11.7319 Background



This preview shows how black text looks on a background with the HunterLab color 66.5128, -0.8004, 11.7319.



This preview shows how white text looks on a background with the HunterLab color 66.5128, -0.8004,



# Color Blindness Simulation

Color vision deficiency is a very complex topic, and I could not describe the different causes any better than Wikipedia does, so if you want to learn more, you should check out their [article about color blindness](#).

## Dichromacy



### Original Color

66.5128, -0.8004, 11.7319

### Protanopia

66.5557, -3.6292, 11.3207

### Deuteranopia

66.3938, 4.7813, 11.2960



## Tritanopia

66.4063, 6.2758, 0.0488

# Trichromacy



## Original Color

66.5128, -0.8004, 11.7319

## Protanomaly

66.4481, -2.4815, 11.2266

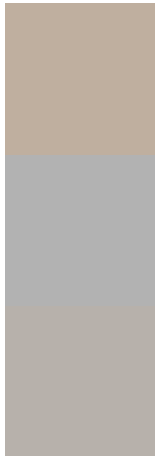
## Deuteranomaly

66.2672, 2.8856, 11.1280

## Tritanomaly

66.3152, 3.9474, 4.2092

# Monochromacy



## Original Color

66.5128, -0.8004, 11.7319

## Achromatopsia

66.7234, -3.5602, 3.6252

## Achromatomaly

66.6722, -2.6210, 6.7751

# CSS Examples

## Text

The CSS property to change the color of the text to HunterLab 66.5128, -0.8004, 11.7319 is called "color". The color property can be set on classes, ids or directly on the HTML element.

This example shows how text in the color `rgb(191, 175, 159)` looks like.

```
.text, #text, p{  
    color:rgb(191, 175, 159)  
}
```

If you want to add a text shadow in that color use the text-shadow property, you can generate a text shadow directly with our [CSS Text Shadow Generator](#).

Here you see how black text with a 4 pixel rgb(191, 175, 159) colored shadow looks like.

```
.shadow{ text-shadow: 4px 4px 2px rgb(191, 175, 159) }
```

## Border

The CSS property to change the border of an element to HunterLab 66.5128, -0.8004, 11.7319 is called "border". The border property can be set on classes, ids or directly on the HTML element.

This example shows the color as border, it can be applied via the CSS property "border" or "border-color".

```
.border, #border, table{ border:4px solid rgb(191, 175, 159) }
```



If only the border color should be changed use the property `border-color`.

```
.border{ border-color:rgb(191, 175, 159) }
```

If you want to add a box shadow in that color use:

Here you see how a box with a 4 pixel `rgb(191, 175, 159)` colored shadow looks like.

```
.boxshadow{ -moz-box-shadow:4px 4px 4px  
4px rgb(191, 175, 159); -webkit-box-  
shadow:4px 4px 4px 4px rgb(191, 175, 159);  
box-shadow:4px 4px 4px 4px rgb(191, 175,  
159) }
```

# Background

The CSS property to change the background color of an element to HunterLab 66.5128, -0.8004, 11.7319 is called "background". The background property can be set on classes, ids or directly on the HTML element.

```
.background, #background, body{  
background: rgb(191, 175, 159) }
```

If only the background color should be changed can be used:

```
.background{ background-color: rgb(191,  
175, 159) }
```

This example shows the color as background, it is applied via the CSS property "background".

To optimize and compress your CSS code, you can use our [online CSS compressor and optimizer](#) based on csstidy. If you want to create a linear or radial gradient as background or border, check our [CSS Gradient Generator](#).

Hey! You found this booklet interesting? Support Converting Colors with the new Membership Option!

The pro membership hides all ads, plus gives you double the colors in the color bucket, and more awesome pro features!

**[Learn more, Memberships starting at \\$2.50/m!](#)**

**Follow me  
on Twitter!**

@ConvertingColor