

Converting Colors

HunterLab(66.5396, 1.6207,
5.3483)

Have a look what the booklet for
HunterLab(66.5396, 1.6207, 5.3483)
contains.

HunterLab(66.5396, 1.6207, 5.3483)	3
<i>Conversions</i>	4
<i>Details</i>	6
<i>Harmonies</i>	12
<i>Previews</i>	24
<i>Color Blindness Simulation</i>	28
<i>CSS Examples</i>	31

Color

**HunterLab(66.5396, 1.6207,
5.3483)**

Conversions

Conversions Part 1

Format	Color
Hex	BEAEAE
RGB	190, 174, 174
RGB Percent	75%, 68%, 68%
CMY	0.2549, 0.3176, 0.3176
CMYK	0.00, 0.08, 0.08, 0.25
HSL	0°, 11%, 71%
HSV	0°, 8%, 75%
XYZ	44.0112, 44.2752, 46.2707
YIQ	178.7840, 9.5360, 3.3920

Conversions

Conversions Part 2

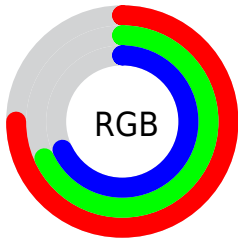
Format	Color
RYB	190, 174, 174
Decimal	12496558
CIELab	72.41, 5.73, 2.07
CIELCh	72, 6.097, 19.861
Yxy	44.2771, 0.3271, 0.3290
Android (android.graphics.Color)	4290686638 (0xFFBEAEAE)
YUV	178.7840, -2.3585, 9.8364
Hunter-Lab	66.5396, 1.6207, 5.3483

Details

The HunterLab color **66.5396, 1.6207, 5.3483** is a light color, and the websafe version is hex **999999**. A complement of this color would be **70.3864, -8.6424, 2.1848**, and the grayscale version is **67.0584, -3.5781, 3.6434**.

A 20% lighter version of the original color is **90.1602, 0.9374, 6.8251**, and **45.4341, 2.1651, 4.0067** is the 20% darker color. If you saturate the color by 10%, you get **60.6294, 8.3498, 7.1800**, and if you desaturate by 10%, it is **72.7584, -4.8293, 3.6354**.

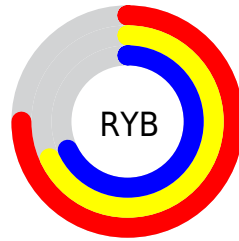
Distribution



Red (75%)

Green (68%)

Blue (68%)



Red (75%)

Yellow (68%)

Blue (68%)

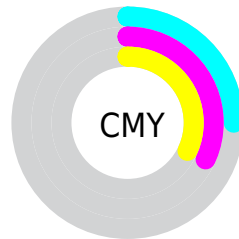


Cyan (0%)

Magenta (8%)

Yellow (8%)

Black (25%)



Cyan (25%)

Magenta (32%)

Yellow (32%)

Brightness & Saturation Gradients

These gradients show how the HunterLab color 66.5396, 1.6207, 5.3483 changes by changing the brightness by 10 percent. The first figure shows a shift by +10% for each color and the second figure -10%.

Similar to the brightness gradients but the following saturation gradients show a change of the HunterLab color 66.5396, 1.6207, 5.3483 by changing the saturation by 10% instead.

■ 66.5396, 1.6207,
5.3483

■ 66.5396, 1.6207,
5.3483

190.7454, -2.8949,
12.8535

■ 55.5774, 1.9124,
4.6492

■ 90.3519, 0.8866,
6.8357

■ 45.2923, 2.1512,
3.9788

103.1369, 0.4552,
7.6200

■ 35.7340, 2.3285,
3.3393

116.4738, -0.0158,
8.4306

■ 26.9625, 2.4353,
2.7315

130.3407, -0.5242,
9.2668

■ 19.0562, 2.4588,
2.1558

144.7180, -1.0679,
10.1278

■ 12.1226, 2.3787,
1.6112

159.5882, -1.6452,

■ 5.1689, 4.5578,

11.0130

1.9424

174.9354, -2.2547,
11.9218

0.0000, NaN, NaN

0.0000, NaN, NaN

■ 66.5396, 1.6207,
5.3483

■ 66.5396, 1.6207,
5.3483

■ 60.6294, 8.3498,
7.1800

■ 72.7584, -4.8293,
3.6354

■ 55.0787, 15.3729,
9.1344

■ 79.2377, -11.0228,
2.0255

■ 49.9579, 22.6563,
11.2067

■ 85.9446, -16.9956,
0.5059

■ 45.3522, 30.0886,
13.3658

■ 92.8515, -22.7813,
-0.9367

■ 41.3608, 37.4286,

■ 94.7034, -24.2828,

15.5377

-1.2995

■ 38.0895, 44.2611,
17.5909

■ 35.6306, 50.0133,
19.3401

■ 34.0299, 54.1037,
20.5937

■ 33.1961, 56.3584,
21.2880

Harmonies

Analogous

The Analogous color harmony consists of three colors that are next to each other on the color wheel.



66.5411, 1.8639, 2.7083



66.5396, 1.6207, 5.3483



66.5411, -0.0251, 7.4430

Triad

The Triadic color harmony groups three colors that are evenly spaced from another and form a triangle on the color wheel.



66.5411, 1.6189, 5.3494



66.5411, -7.6456, 6.8596



66.5411, -4.5051, -1.6540

Complementary

The Complementary color scheme is a pair of colors which are on the opposite of each other on the color wheel.



66.5396, 1.6207, 5.3483



70.3864, -8.6424, 2.1848

Split Complementary

Split-complementary colors differ from the complementary color scheme. The scheme consists of three colors, the original color and two neighbors of the complement color.



66.5411, -7.0109, -0.4399



66.5396, 1.6207, 5.3483



66.5411, -8.8040, 4.5229

Square

The Square scheme is like the rectangle color scheme, but the four colors are evenly spaced on the color wheel.



66.5411, 1.6189, 5.3494



66.5411, -5.3848, 8.2895



66.5411, -8.5736, 1.8470



66.5411, -1.7032, -1.4102

Rectangle

The Rectangle color scheme consists of four colors that form a rectangle on the color wheel.



66.5396, 1.6207, 5.3483



66.5411, -1.6783, 8.2816



66.5411, -8.5736, 1.8470



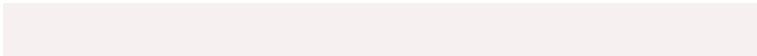
66.5411, -5.4092, -1.4010

Sweetspot

The Sweet Spot groups the original color and five complimentary colors.



66.5411, 1.6189, 5.3494



94.0237, -2.5293, 5.9430



67.0355, 4.2861, -1.7049



43.7410, -0.8545, 2.8728



98.8636, -5.2751, 5.3714



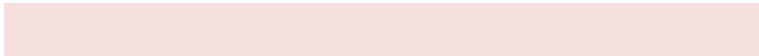
45.2661, -2.4153, 2.4594

Same Dimension

The Same Dimension uses a secret algorithm to generate beautiful new colors.



66.5411, 1.6189, 5.3494



88.1575, 3.7287, 7.6185



68.8909, -2.3977, 7.9441



30.8815, 1.0442, 2.5809



26.9814, 46.1997, 17.4346



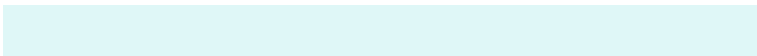
5.3411, 9.1402, 3.4512

Inverse Universe

The Inverse Universe completely reimagines the original color for something new.



70.3864, -8.6424, 2.1848



94.3910, -12.9118, 2.4863



67.9506, -4.7000, -0.7181



32.8774, -4.2827, 0.9380



51.9123, -27.5144, -5.4901



10.2748, -5.4462, -1.0859

Previews

White Background



This preview shows how the HunterLab color 66.5396, 1.6207, 5.3483 looks on a white background.

Color Contrast Check

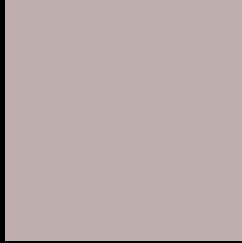
Large Text (above 18pt) WCAG AA × Fail

Any Text WCAG AA × Fail

Large Text (above 18pt) WCAG AAA × Fail

Any Text WCAG AAA × Fail

Black Background



This preview shows how the HunterLab color 66.5396, 1.6207, 5.3483 looks on a black background.

Color Contrast Check

Large Text (above 18pt) WCAG AA ✓ Pass

Any Text WCAG AA ✓ Pass

Large Text (above 18pt) WCAG AAA ✓ Pass

Any Text WCAG AAA ✓ Pass

If you want to check with other color combinations, try the [Color Contrast Checker](#).

HunterLab 66.5396, 1.6207, 5.3483 Background



This preview shows how black text looks on a background with the HunterLab color 66.5396, 1.6207, 5.3483.



This preview shows how white text looks on a background with the HunterLab color 66.5396, 1.6207,

Color Blindness Simulation

Color vision deficiency is a very complex topic, and I could not describe the different causes any better than Wikipedia does, so if you want to learn more, you should check out their [article about color blindness](#).

Dichromacy



Original Color

66.5396, 1.6207, 5.3483

Protanopia

66.6353, -2.4573, 4.4707

Deuteranopia

66.5558, 4.6377, 5.4198



Tritanopia

66.5257, 5.2718, -0.3166

Trichromacy



Original Color

66.5396, 1.6207, 5.3483

Protanomaly

66.5854, -1.1701, 4.8954

Deuteranomaly

66.6427, 3.4554, 5.4991

Tritanomaly

66.5890, 3.7568, 1.6926

Monochromacy



Original Color

66.5396, 1.6207, 5.3483

Achromatopsia

67.1406, -3.5825, 3.6479

Achromatomaly

66.8475, -1.6644, 4.2696

CSS Examples

Text

The CSS property to change the color of the text to HunterLab 66.5396, 1.6207, 5.3483 is called "color". The color property can be set on classes, ids or directly on the HTML element.

This example shows how text in the color `rgb(190, 174, 174)` looks like.

```
.text, #text, p{  
    color:rgb(190, 174, 174)  
}
```

If you want to add a text shadow in that color use the text-shadow property, you can generate a text shadow directly with our [CSS Text Shadow Generator](#).

Here you see how black text with a 4 pixel rgb(190, 174, 174) colored shadow looks like.

```
.shadow{ text-shadow: 4px 4px 2px rgb(190, 174, 174) }
```

Border

The CSS property to change the border of an element to HunterLab 66.5396, 1.6207, 5.3483 is called "border".

The border property can be set on classes, ids or directly on the HTML element.

This example shows the color as border, it can be applied via the CSS property "border" or "border-color".

```
.border, #border, table{ border:4px solid rgb(190, 174, 174) }
```


If only the border color should be changed use the property `border-color`.

```
.border{ border-color:rgb(190, 174, 174) }
```

If you want to add a box shadow in that color use:

Here you see how a box with a 4 pixel `rgb(190, 174, 174)` colored shadow looks like.

```
.boxshadow{ -moz-box-shadow:4px 4px 4px  
4px rgb(190, 174, 174); -webkit-box-  
shadow:4px 4px 4px 4px rgb(190, 174, 174);  
box-shadow:4px 4px 4px 4px rgb(190, 174,  
174) }
```

Background

The CSS property to change the background color of an element to HunterLab 66.5396, 1.6207, 5.3483 is called "background". The background property can be set on classes, ids or directly on the HTML element.

```
.background, #background, body{  
background: rgb(190, 174, 174) }
```

If only the background color should be changed can be used:

```
.background{ background-color: rgb(190,  
174, 174) }
```

This example shows the color as background, it is applied via the CSS property "background".

To optimize and compress your CSS code, you can use our [online CSS compressor and optimizer](#) based on csstidy. If you want to create a linear or radial gradient as background or border, check our [CSS Gradient Generator](#).

Hey! You found this booklet interesting? Support Converting Colors with the new Membership Option!

The pro membership hides all ads, plus gives you double the colors in the color bucket, and more awesome pro features!

[Learn more, Memberships starting at \\$2.50/m!](#)

**Follow me
on Twitter!**

@ConvertingColor