

Converting Colors

HunterLab(66.5491, 1.5274,
17.8820)

Have a look what the booklet for
HunterLab(66.5491, 1.5274,
17.8820) contains.

HunterLab(66.5491, 1.5274, 17.8820)	3
<i>Conversions</i>	4
<i>Details</i>	6
<i>Harmonies</i>	12
<i>Previews</i>	24
<i>Color Blindness Simulation</i>	28
<i>CSS Examples</i>	31

Color

**HunterLab(66.5491, 1.5274,
17.8820)**

Conversions

Conversions Part 1

Format	Color
Hex	C9AD8F
RGB	201, 173, 143
RGB Percent	79%, 68%, 56%
CMY	0.2118, 0.3215, 0.4392
CMYK	0.00, 0.14, 0.29, 0.21
HSL	31°, 35%, 67%
HSV	31°, 29%, 79%
XYZ	43.9889, 44.2878, 32.2165
YIQ	177.9520, 26.3180, -3.3940

Conversions

Conversions Part 2

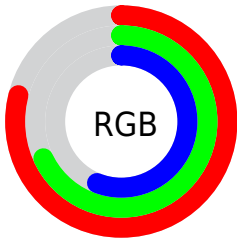
Format	Color
R_{YB}	197, 201, 143
Decimal	13217167
CIE _{Lab}	72.42, 5.63, 19.18
CIE _{LCh}	72, 19.989, 73.635
Yxy	44.2899, 0.3651, 0.3676
Android (android.graphics.Color)	4291407247 (0xFFC9AD8F)
YUV	177.9520, -17.2313, 20.2131
Hunter-Lab	66.5491, 1.5274, 17.8820

Details

The HunterLab color $66.5491, 1.5274, 17.8820$ is a light color, and the websafe version is hex `CCCC99`. A complement of this color would be $62.5950, -5.6470, -13.8690$, and the grayscale version is $66.7665, -3.5625, 3.6275$.

A 20% lighter version of the original color is $89.8766, -0.2635, 20.5303$, and $45.3608, 1.9464, 14.4492$ is the 20% darker color. If you saturate the color by 10%, you get $63.3619, 4.0776, 21.6103$, and if you desaturate by 10%, it is $69.8654, -0.7004, 13.5927$.

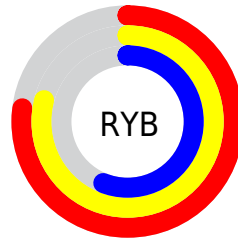
Distribution



Red (79%)

Green (68%)

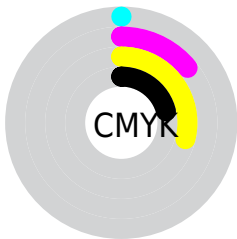
Blue (56%)



Red (77%)

Yellow (79%)

Blue (56%)

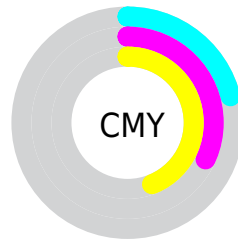


Cyan (0%)

Magenta (14%)

Yellow (29%)

Black (21%)



Cyan (21%)

Magenta (32%)

Yellow (44%)

Brightness & Saturation Gradients

These gradients show how the HunterLab color 66.5491, 1.5274, 17.8820 changes by changing the brightness by 10 percent. The first figure shows a shift by +10% for each color and the second figure -10%.

Similar to the brightness gradients but the following saturation gradients show a change of the HunterLab color 66.5491, 1.5274, 17.8820 by changing the saturation by 10% instead.

■ 66.5491, 1.5274,
17.8820

■ 66.5491, 1.5274,
17.8820

190.7590, -3.0263,
32.0105

■ 55.5864, 1.8238,
16.2324

■ 90.3625, 0.7833,
21.0946

■ 45.3007, 2.0681,
14.5361

■ 103.1479, 0.3474,
22.6720

■ 35.7417, 2.2512,
12.7753

116.4853, -0.1279,
24.2379

■ 26.9696, 2.3644,
10.9217

130.3526, -0.6404,
25.7964

■ 19.0625, 2.3948,
8.9303

144.7304, -1.1881,
27.3506

■ 12.1280, 2.3225,
7.7247

159.6010, -1.7693,

■ 5.1779, 4.4630,

28.9031

3.6246

174.9486, -2.3825,
30.4558

0.0000, NaN, NaN

0.0000, NaN, NaN

■ 66.5491, 1.5274,
17.8820

■ 66.5491, 1.5274,
17.8820

■ 63.3619, 4.0776,
21.6103

■ 69.8654, -0.7004,
13.5927

■ 60.3097, 6.9736,
24.7210

■ 73.2967, -2.6187,
8.7915

■ 57.4051, 10.2238,
27.1617

■ 76.8355, -4.2509,
3.5277

■ 54.6596, 13.8301,
28.8853

■ 80.4739, -5.6183,
-2.1549

■ 52.0846, 17.7803,

■ 84.2046, -6.7417,

29.8582

-8.2165

■ 49.6905, 22.0423,
30.0748

■ 87.6988, -9.4211,
-10.0862

■ 47.4809, 26.5363,
29.6396

■ 90.8296, -14.3730,
-6.0391

■ 47.2380, 27.0523,
29.5814

■ 94.0187, -19.2622,
-2.0648

■ 95.4765, -21.4490,
-0.2939

Harmonies

Analogous

The Analogous color harmony consists of three colors that are next to each other on the color wheel.



66.5506, 9.7971, 14.2609



66.5491, 1.5274, 17.8820



66.5506, -7.6909, 18.0418

Triad

The Triadic color harmony groups three colors that are evenly spaced from another and form a triangle on the color wheel.



66.5506, 1.5251, 17.8829



66.5506, -19.9539, -0.4857



66.5506, 9.1535, -9.8057

Complementary

The Complementary color scheme is a pair of colors which are on the opposite of each other on the color wheel.



66.5491, 1.5274, 17.8820



62.5950, -5.6470, -13.8690

Split Complementary

Split-complementary colors differ from the complementary color scheme. The scheme consists of three colors, the original color and two neighbors of the complement color.



66.5506, 0.6854, -14.9821



66.5491, 1.5274, 17.8820



66.5506, -15.9301, -9.1261

Square

The Square scheme is like the rectangle color scheme, but the four colors are evenly spaced on the color wheel.



66.5506, 1.5251, 17.8829



66.5506, -19.7565, 8.2102



66.5506, -8.4863, -14.7176



66.5506, 14.3629, -1.3170

Rectangle

The Rectangle color scheme consists of four colors that form a rectangle on the color wheel.



66.5491, 1.5274, 17.8820



66.5506, -13.1115, 16.2125



66.5506, -8.4863, -14.7176



66.5506, 6.5742, -12.0394

Sweetspot

The Sweet Spot groups the original color and five complimentary colors.



66.5506, 1.5251, 17.8829



95.7829, -3.3636, 11.6819



59.1646, 20.9561, -1.8031



44.0032, -1.3953, 5.8505

0.0000, NaN, NaN



46.2646, -2.4686, 2.5136

Same Dimension

The Same Dimension uses a secret algorithm to generate beautiful new colors.



66.5506, 1.5251, 17.8829



84.2919, 4.1624, 26.7219



74.8603, -12.5628, 25.3266



33.9548, -1.1731, 4.2043



37.7023, 20.8923, 23.5977



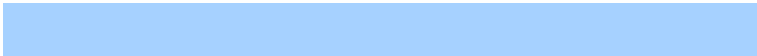
9.0423, 2.7537, 5.6201

Inverse Universe

The Inverse Universe completely reimagines the original color for something new.



62.5950, -5.6470, -13.8690



77.9855, -7.1932, -23.9991



54.5791, 8.6884, -26.2445



33.3440, -2.2919, -0.6846



28.6547, 8.4630, -54.0851



7.3053, -0.1289, -8.8528

Previews

White Background



This preview shows how the HunterLab color 66.5491, 1.5274, 17.8820 looks on a white background.

Color Contrast Check

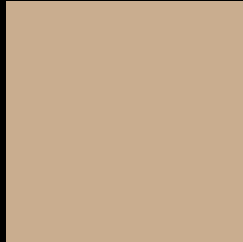
Large Text (above 18pt) WCAG AA × Fail

Any Text WCAG AA × Fail

Large Text (above 18pt) WCAG AAA × Fail

Any Text WCAG AAA × Fail

Black Background



This preview shows how the HunterLab color 66.5491, 1.5274, 17.8820 looks on a black background.

Color Contrast Check

Large Text (above 18pt) WCAG AA ✓ Pass

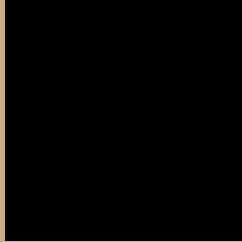
Any Text WCAG AA ✓ Pass

Large Text (above 18pt) WCAG AAA ✓ Pass

Any Text WCAG AAA ✓ Pass

If you want to check with other color combinations, try the [Color Contrast Checker](#).

HunterLab 66.5491, 1.5274, 17.8820 Background



This preview shows how black text looks on a background with the HunterLab color 66.5491, 1.5274, 17.8820.



This preview shows how white text looks on a background with the HunterLab color 66.5491, 1.5274,

Color Blindness Simulation

Color vision deficiency is a very complex topic, and I could not describe the different causes any better than Wikipedia does, so if you want to learn more, you should check out their [article about color blindness](#).

Dichromacy



Original Color

66.5491, 1.5274, 17.8820

Protanopia

66.4680, -4.6773, 16.9802

Deuteranopia

66.6141, 4.6857, 17.9999



Tritanopia

66.5737, 10.9083, 2.2802

Trichromacy



Original Color

66.5491, 1.5274, 17.8820

Protanomaly

66.6346, -2.6237, 17.5367

Deuteranomaly

66.6838, 3.4580, 18.0456

Tritanomaly

66.6159, 7.3551, 8.6385

Monochromacy



Original Color

66.5491, 1.5274, 17.8820

Achromatopsia

66.7234, -3.5602, 3.6252

Achromatomaly

66.4879, -2.0753, 9.1896

CSS Examples

Text

The CSS property to change the color of the text to HunterLab 66.5491, 1.5274, 17.8820 is called "color". The color property can be set on classes, ids or directly on the HTML element.

This example shows how text in the color `rgb(201, 173, 143)` looks like.

```
.text, #text, p{  
    color:rgb(201, 173, 143)  
}
```

If you want to add a text shadow in that color use the text-shadow property, you can generate a text shadow directly with our [CSS Text Shadow Generator](#).

Here you see how black text with a 4 pixel rgb(201, 173, 143) colored shadow looks like.

```
.shadow{ text-shadow: 4px 4px 2px rgb(201, 173, 143) }
```

Border

The CSS property to change the border of an element to HunterLab 66.5491, 1.5274, 17.8820 is called "border". The border property can be set on classes, ids or directly on the HTML element.

This example shows the color as border, it can be applied via the CSS property "border" or "border-color".

```
.border, #border, table{ border:4px solid rgb(201, 173, 143) }
```


If only the border color should be changed use the property `border-color`.

```
.border{ border-color:rgb(201, 173, 143) }
```

If you want to add a box shadow in that color use:

Here you see how a box with a 4 pixel `rgb(201, 173, 143)` colored shadow looks like.

```
.boxshadow{ -moz-box-shadow:4px 4px 4px  
4px rgb(201, 173, 143); -webkit-box-  
shadow:4px 4px 4px 4px rgb(201, 173, 143);  
box-shadow:4px 4px 4px 4px rgb(201, 173,  
143) }
```

Background

The CSS property to change the background color of an element to HunterLab 66.5491, 1.5274, 17.8820 is called "background". The background property can be set on classes, ids or directly on the HTML element.

```
.background, #background, body{  
background: rgb(201, 173, 143) }
```

If only the background color should be changed can be used:

```
.background{ background-color: rgb(201,  
173, 143) }
```

This example shows the color as background, it is applied via the CSS property "background".

To optimize and compress your CSS code, you can use our [online CSS compressor and optimizer](#) based on csstidy. If you want to create a linear or radial gradient as background or border, check our [CSS Gradient Generator](#).

Hey! You found this booklet interesting? Support Converting Colors with the new Membership Option!

The pro membership hides all ads, plus gives you double the colors in the color bucket, and more awesome pro features!

[Learn more, Memberships starting at \\$2.50/m!](#)

**Follow me
on Twitter!**

@ConvertingColor