

Converting Colors

HunterLab(66.5625, 1.3547,
8.0410)

Have a look what the booklet for
HunterLab(66.5625, 1.3547, 8.0410)
contains.

HunterLab(66.5625, 1.3547, 8.0410)	3
<i>Conversions</i>	4
<i>Details</i>	6
<i>Harmonies</i>	12
<i>Previews</i>	24
<i>Color Blindness Simulation</i>	28
<i>CSS Examples</i>	31

Color

**HunterLab(66.5625, 1.3547,
8.0410)**

Conversions

Conversions Part 1

Format	Color
Hex	C0AEA8
RGB	192, 174, 168
RGB Percent	75%, 68%, 66%
CMY	0.2471, 0.3176, 0.3412
CMYK	0.00, 0.09, 0.12, 0.25
HSL	15°, 16%, 71%
HSV	15°, 12%, 75%
XYZ	43.9421, 44.3057, 43.2816
YIQ	178.6980, 12.6540, 1.9500

Conversions

Conversions Part 2

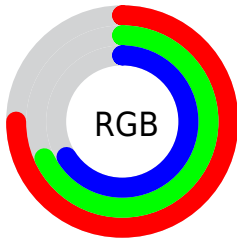
Format	Color
RYB	192, 176, 168
Decimal	12627624
CIELab	72.43, 5.44, 5.42
CIELCh	72, 7.679, 44.855
Yxy	44.3076, 0.3341, 0.3369
Android (android.graphics.Color)	4290817704 (0xFFC0AEA8)
YUV	178.6980, -5.2741, 11.6659
Hunter-Lab	66.5625, 1.3547, 8.0410

Details

The HunterLab color **66.5625, 1.3547, 8.0410** is a light color, and the websafe version is hex **999999**. A complement of this color would be **68.7367, -8.0489, -0.8014**, and the grayscale version is **67.0333, -3.5767, 3.6420**.

A 20% lighter version of the original color is **90.2807, 0.9838, 9.8002**, and **45.3688, 1.6267, 6.3915** is the 20% darker color. If you saturate the color by 10%, you get **61.9482, 5.8402, 11.1404**, and if you desaturate by 10%, it is **71.3732, -2.8605, 4.7814**.

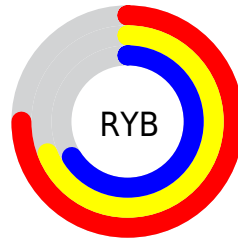
Distribution



Red (75%)

Green (68%)

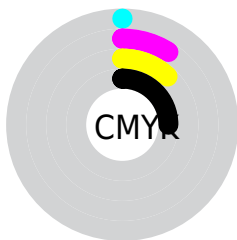
Blue (66%)



Red (75%)

Yellow (69%)

Blue (66%)

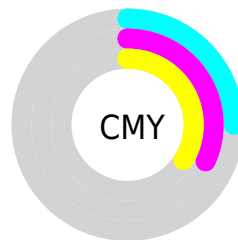


Cyan (0%)

Magenta (9%)

Yellow (12%)

Black (25%)



Cyan (25%)

Magenta (32%)

Yellow (34%)

Brightness & Saturation Gradients

These gradients show how the HunterLab color 66.5625, 1.3547, 8.0410 changes by changing the brightness by 10 percent. The first figure shows a shift by +10% for each color and the second figure -10%.

Similar to the brightness gradients but the following saturation gradients show a change of the HunterLab color 66.5625, 1.3547, 8.0410 by changing the saturation by 10% instead.

■ 66.5625, 1.3547,
8.0410

■ 66.5625, 1.3547,
8.0410

190.7779, -3.2678,
16.7758

■ 55.5989, 1.6610,
7.1688

■ 90.3772, 0.5934,
9.8450

■ 45.3124, 1.9153,
6.3129

103.1634, 0.1494,
10.7758

■ 35.7526, 2.1092,
5.4722

116.5014, -0.3338,
11.7265

■ 26.9795, 2.2340,
4.6426

130.3693, -0.8539,
12.6970

■ 19.0713, 2.2772,
3.8171

144.7476, -1.4089,
13.6874

■ 12.1356, 2.2191,
2.9810

159.6188, -1.9972,

■ 5.1906, 4.2930,

14.6974

3.6334

174.9670, -2.6173,
15.7269

0.0000, NaN, NaN

0.0000, NaN, NaN

■ 66.5625, 1.3547,
8.0410

■ 66.5625, 1.3547,
8.0410

■ 61.9482, 5.8402,
11.1404

■ 71.3732, -2.8605,
4.7814

■ 57.5523, 10.6236,
14.0370

■ 76.3540, -6.8261,
1.3881

■ 53.4074, 15.7143,
16.6804

■ 81.4878, -10.5713,
-2.1157

■ 49.5502, 21.1030,
19.0045

■ 86.7592, -14.1219,
-5.7132

■ 46.0226, 26.7455,

■ 91.8327, -19.3161,

20.9286

-4.8330

■ 42.8710, 32.5444,
22.3616

■ 94.8402, -23.7796,
-1.1210

■ 40.1427, 38.3314,
23.2159

■ 37.8807, 43.8575,
23.4369

■ 36.5004, 47.6074,
23.3248

Harmonies

Analogous

The Analogous color harmony consists of three colors that are next to each other on the color wheel.



66.5640, 3.1715, 5.2664



66.5625, 1.3547, 8.0410



66.5640, -1.7626, 9.5909

Triad

The Triadic color harmony groups three colors that are evenly spaced from another and form a triangle on the color wheel.



66.5640, 1.3528, 8.0420



66.5640, -10.0164, 5.2974



66.5640, -1.7963, -2.9632

Complementary

The Complementary color scheme is a pair of colors which are on the opposite of each other on the color wheel.



66.5625, 1.3547, 8.0410



68.7367, -8.0489, -0.8014

Split Complementary

Split-complementary colors differ from the complementary color scheme. The scheme consists of three colors, the original color and two neighbors of the complement color.



66.5640, -5.3292, -2.9538



66.5625, 1.3547, 8.0410



66.5640, -10.0250, 1.9371

Square

The Square scheme is like the rectangle color scheme, but the four colors are evenly spaced on the color wheel.



66.5640, 1.3528, 8.0420



66.5640, -8.3013, 8.0637



66.5640, -8.3251, -1.1209



66.5640, 1.3276, -1.1459

Rectangle

The Rectangle color scheme consists of four colors that form a rectangle on the color wheel.



66.5625, 1.3547, 8.0410



66.5640, -4.1319, 9.7737



66.5640, -8.3251, -1.1209



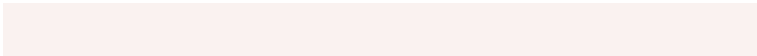
66.5640, -2.9766, -3.1765

Sweetspot

The Sweet Spot groups the original color and five complimentary colors.



66.5640, 1.3528, 8.0420



95.0455, -2.9861, 7.1355



65.3892, 7.3299, -1.7009



43.7925, -1.1873, 3.4615



98.8636, -5.2751, 5.3714



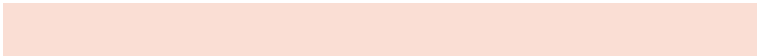
45.2661, -2.4153, 2.4594

Same Dimension

The Same Dimension uses a secret algorithm to generate beautiful new colors.



66.5640, 1.3528, 8.0420



87.8703, 3.4384, 11.9920



70.1084, -4.6406, 11.7894



32.3700, 0.0036, 3.3483



30.1180, 38.5207, 19.2329



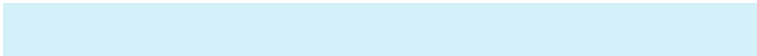
7.1122, 5.6749, 4.4818

Inverse Universe

The Inverse Universe completely reimagines the original color for something new.



68.7367, -8.0489, -0.8014



91.4239, -11.9476, -2.4744



65.1178, -2.1172, -5.3181



33.1480, -3.3611, 0.1823



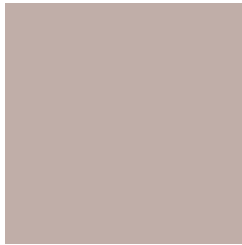
40.1319, -11.6324, -25.0504



8.9434, -3.2521, -4.1581

Previews

White Background



This preview shows how the HunterLab color 66.5625, 1.3547, 8.0410 looks on a white background.

Color Contrast Check

Large Text (above 18pt) WCAG AA × Fail

Any Text WCAG AA × Fail

Large Text (above 18pt) WCAG AAA × Fail

Any Text WCAG AAA × Fail

Black Background



This preview shows how the HunterLab color 66.5625, 1.3547, 8.0410 looks on a black background.

Color Contrast Check

Large Text (above 18pt) WCAG AA ✓ Pass

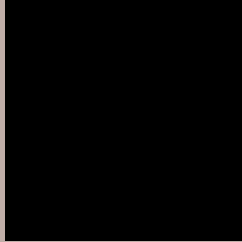
Any Text WCAG AA ✓ Pass

Large Text (above 18pt) WCAG AAA ✓ Pass

Any Text WCAG AAA ✓ Pass

If you want to check with other color combinations, try the [Color Contrast Checker](#).

HunterLab 66.5625, 1.3547, 8.0410 Background



This preview shows how black text looks on a background with the HunterLab color 66.5625, 1.3547, 8.0410.



This preview shows how white text looks on a background with the HunterLab color 66.5625, 1.3547,

Color Blindness Simulation

Color vision deficiency is a very complex topic, and I could not describe the different causes any better than Wikipedia does, so if you want to learn more, you should check out their [article about color blindness](#).

Dichromacy



Original Color

66.5625, 1.3547, 8.0410

Protanopia

66.6437, -2.7767, 7.1831

Deuteranopia

66.5868, 4.3977, 8.1212



Tritanopia

66.4063, 6.2758, 0.0488

Trichromacy



Original Color

66.5625, 1.3547, 8.0410

Protanomaly

66.5991, -1.4693, 7.5957

Deuteranomaly

66.6709, 3.2072, 8.1938

Tritanomaly

66.4057, 4.4325, 2.9186

Monochromacy



Original Color

66.5625, 1.3547, 8.0410

Achromatopsia

67.1406, -3.5825, 3.6479

Achromatomaly

66.8803, -1.6696, 5.2276

CSS Examples

Text

The CSS property to change the color of the text to HunterLab 66.5625, 1.3547, 8.0410 is called "color". The color property can be set on classes, ids or directly on the HTML element.

This example shows how text in the color `rgb(192, 174, 168)` looks like.

```
.text, #text, p{  
    color:rgb(192, 174, 168)  
}
```

If you want to add a text shadow in that color use the text-shadow property, you can generate a text shadow directly with our [CSS Text Shadow Generator](#).

Here you see how black text with a 4 pixel rgb(192, 174, 168) colored shadow looks like.

```
.shadow{ text-shadow: 4px 4px 2px rgb(192, 174, 168) }
```

Border

The CSS property to change the border of an element to HunterLab 66.5625, 1.3547, 8.0410 is called "border". The border property can be set on classes, ids or directly on the HTML element.

This example shows the color as border, it can be applied via the CSS property "border" or "border-color".

```
.border, #border, table{ border:4px solid rgb(192, 174, 168) }
```


If only the border color should be changed use the property `border-color`.

```
.border{ border-color:rgb(192, 174, 168) }
```

If you want to add a box shadow in that color use:

Here you see how a box with a 4 pixel `rgb(192, 174, 168)` colored shadow looks like.

```
.boxshadow{ -moz-box-shadow:4px 4px 4px  
4px rgb(192, 174, 168); -webkit-box-  
shadow:4px 4px 4px 4px rgb(192, 174, 168);  
box-shadow:4px 4px 4px 4px rgb(192, 174,  
168) }
```

Background

The CSS property to change the background color of an element to HunterLab 66.5625, 1.3547, 8.0410 is called "background". The background property can be set on classes, ids or directly on the HTML element.

```
.background, #background, body{  
background: rgb(192, 174, 168) }
```

If only the background color should be changed can be used:

```
.background{ background-color: rgb(192,  
174, 168) }
```

This example shows the color as background, it is applied via the CSS property "background".

To optimize and compress your CSS code, you can use our [online CSS compressor and optimizer](#) based on csstidy. If you want to create a linear or radial gradient as background or border, check our [CSS Gradient Generator](#).

Hey! You found this booklet interesting? Support Converting Colors with the new Membership Option!

The pro membership hides all ads, plus gives you double the colors in the color bucket, and more awesome pro features!

[Learn more, Memberships starting at \\$2.50/m!](#)

**Follow me
on Twitter!**

@ConvertingColor