

Converting Colors

HunterLab(66.6198, 31.5256,
1.5122)

Have a look what the booklet for
HunterLab(66.6198, 31.5256,
1.5122) contains.

HunterLab(66.6172, 31.3233, 1.7253)	3
<i>Conversions</i>	4
<i>Details</i>	6
<i>Harmonies</i>	12
<i>Previews</i>	24
<i>Color Blindness Simulation</i>	28
<i>CSS Examples</i>	31

Color

**HunterLab(66.6172, 31.3233,
1.7253)**

Conversions

Conversions Part 1

Format	Color
Hex	EE99B7
RGB	238, 153, 183
RGB Percent	93%, 60%, 72%
CMY	0.0667, 0.4000, 0.2823
CMYK	0.00, 0.36, 0.23, 0.07
HSL	339°, 71%, 77%
HSV	339°, 36%, 93%
XYZ	55.1984, 44.3785, 50.4564
YIQ	181.8350, 41.0300, 27.3500

Conversions

Conversions Part 2

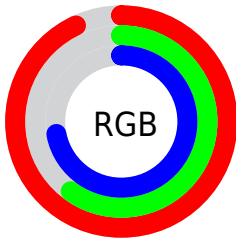
Format	Color
R_{YB}	238, 153, 183
Decimal	15636919
CIE _{Lab}	72.48, 35.77, -2.21
CIE _{LCh}	72, 35.840, 356.459
Yxy	44.3806, 0.3679, 0.2958
Android (android.graphics.Color)	4293826999 (0xFFEE99B7)
YUV	181.8350, 0.5743, 49.2567
Hunter-Lab	66.6172, 31.3233, 1.7253

Details

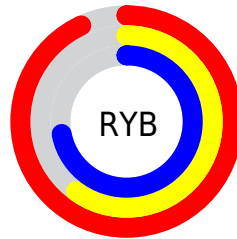
The HunterLab color **66.6172, 31.3233, 1.7253** is a light color, and the websafe version is hex **FF99CC**. A complement of this color would be **85.1332, -33.4572, 10.3109**, and the grayscale version is **68.3126, -3.6450, 3.7116**.

A 20% lighter version of the original color is **85.2078, 17.1690, -4.0170**, and **45.1988, 29.1454, 0.6584** is the 20% darker color. If you saturate the color by 10%, you get **60.6171, 41.6509, 2.0371**, and if you desaturate by 10%, it is **73.2398, 20.9463, 2.0496**.

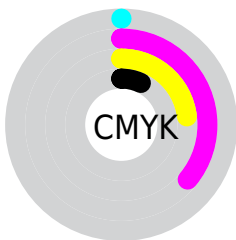
Distribution



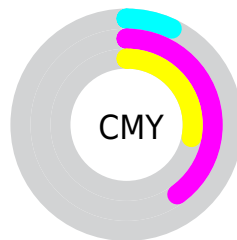
- Red (93%)
- Green (60%)
- Blue (72%)



- Red (93%)
- Yellow (60%)
- Blue (72%)



- Cyan (0%)
- Magenta (36%)
- Yellow (23%)
- Black (7%)



- Cyan (7%)
- Magenta (40%)
- Yellow (28%)

Brightness & Saturation Gradients

These gradients show how the HunterLab color 66.6172, 31.3233, 1.7253 changes by changing the brightness by 10 percent. The first figure shows a shift by +10% for each color and the second figure -10%.

Similar to the brightness gradients but the following saturation gradients show a change of the HunterLab color 66.6172, 31.3233, 1.7253 by changing the saturation by 10% instead.

66.6172, 31.3233,
1.7253

66.6172, 31.3233,
1.7253

190.8558, 37.1069,
7.7105

55.6506, 30.2580,
1.2369

90.4379, 33.1460,
2.8251

45.3606, 29.0831,
0.7909

103.2268, 33.9254,
3.4288

35.7971, 27.7856,
0.3927

116.5675, 34.6252,
4.0663

27.0200, 26.3574,
0.0479

130.4379, 35.2511,
4.7360

19.1074, 24.8007,
-0.2363

144.8186, 35.8081,
5.4365

12.1667, 23.1616,
-0.4486

159.6922, 36.3005,

5.2421, 30.6542,

6.1664

-1.4652

175.0427, 36.7323,
6.9248

0.0000, INF, NaN

0.0000, NaN, NaN

■ 66.6172, 31.3233,
1.7253

■ 66.6172, 31.3233,
1.7253

■ 60.6171, 41.6509,
2.0371

■ 73.2398, 20.9463,
2.0496

■ 55.3505, 51.6011,
3.0983

■ 80.3816, 10.7085,
2.8903

■ 50.9440, 60.6327,
4.9969

■ 87.9634, 0.6856,
4.1491

■ 47.5122, 68.0288,
7.7346

■ 95.9205, -9.1023,
5.7451

■ 45.1244, 73.0651,

■ 98.4465, -10.7826,

11.1696

3.4955

■ 43.7575, 75.3450,
14.9949

■ 43.3788, 75.7627,
16.5945

Harmonies

Analogous

The Analogous color harmony consists of three colors that are next to each other on the color wheel.



66.6188, 25.1339, -15.3897



66.6172, 31.3233, 1.7253



66.6188, 27.4348, 15.7669

Triad

The Triadic color harmony groups three colors that are evenly spaced from another and form a triangle on the color wheel.



66.6188, 31.3204, 1.7267



66.6188, -17.1688, 25.4550



66.6188, -20.2656, -26.9071

Complementary

The Complementary color scheme is a pair of colors which are on the opposite of each other on the color wheel.



66.6172, 31.3233, 1.7253



85.1332, -33.4572, 10.3109

Split Complementary

Split-complementary colors differ from the complementary color scheme. The scheme consists of three colors, the original color and two neighbors of the complement color.



66.6188, -29.7515, -11.3417



66.6172, 31.3233, 1.7253



66.6188, -28.0901, 18.2942

Square

The Square scheme is like the rectangle color scheme, but the four colors are evenly spaced on the color wheel.



66.6188, 31.3204, 1.7267



66.6188, -1.5786, 27.3398



66.6188, -32.4711, 5.4715



66.6188, -5.5149, -34.2747

Rectangle

The Rectangle color scheme consists of four colors that form a rectangle on the color wheel.



66.6172, 31.3233, 1.7253



66.6188, 19.8434, 22.0685



66.6188, -32.4711, 5.4715



66.6188, -24.1179, -22.2993

Sweetspot

The Sweet Spot groups the original color and five complimentary colors.



66.6188, 31.3204, 1.7267



90.7064, 6.4867, 3.7112



64.9610, 30.6087, -33.2633



41.4513, 3.6852, 1.6336

0.0000, NaN, NaN



46.2646, -2.4686, 2.5136

Same Dimension

The Same Dimension uses a secret algorithm to generate beautiful new colors.



66.6188, 31.3204, 1.7267



67.1421, 42.2147, 2.0451



68.6656, 21.1119, 16.6567



39.8133, 2.0758, 1.6997



32.4350, 56.7152, 11.8947



9.4521, 16.7138, 2.0245

Inverse Universe

The Inverse Universe completely reimagines the original color for something new.



66.6188, 31.3204, 1.7267



67.1421, 42.2147, 2.0451



82.2816, -22.6182, -7.9812



39.8133, 2.0758, 1.6997



32.4350, 56.7152, 11.8947



9.4521, 16.7138, 2.0245

Previews

White Background



This preview shows how the HunterLab color 66.6172, 31.3233, 1.7253 looks on a white background.

Color Contrast Check

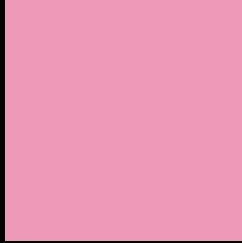
Large Text (above 18pt) WCAG AA × Fail

Any Text WCAG AA × Fail

Large Text (above 18pt) WCAG AAA × Fail

Any Text WCAG AAA × Fail

Black Background



This preview shows how the HunterLab color 66.6172, 31.3233, 1.7253 looks on a black background.

Color Contrast Check

Large Text (above 18pt) WCAG AA ✓ Pass

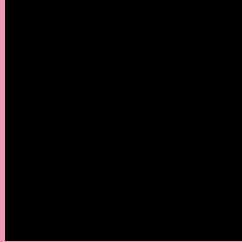
Any Text WCAG AA ✓ Pass

Large Text (above 18pt) WCAG AAA ✓ Pass

Any Text WCAG AAA ✓ Pass

If you want to check with other color combinations, try the [Color Contrast Checker](#).

HunterLab 66.6172, 31.3233, 1.7253 Background



This preview shows how black text looks on a background with the HunterLab color 66.6172, 31.3233, 1.7253.



This preview shows how white text looks on a background with the HunterLab color 66.6172, 31.3233,

1.7253.

Color Blindness Simulation

Color vision deficiency is a very complex topic, and I could not describe the different causes any better than Wikipedia does, so if you want to learn more, you should check out their [article about color blindness](#).

Dichromacy



Original Color

66.6172, 31.3233, 1.7253

Protanopia

66.8966, -0.1453, -6.1323

Deuteranopia

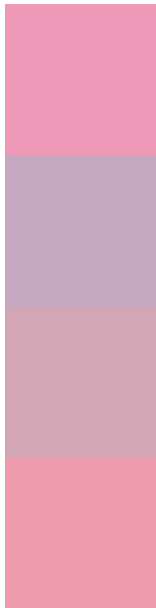
66.9212, 4.7507, 3.0637



Tritanopia

66.6332, 26.5912, 8.9943

Trichromacy



Original Color

66.6172, 31.3233, 1.7253

Protanomaly

66.3307, 10.8894, -4.0335

Deuteranomaly

66.6765, 14.0679, 2.4588

Tritanomaly

66.6816, 28.3664, 6.4328

Monochromacy



Original Color

66.6172, 31.3233, 1.7253

Achromatopsia

68.3947, -3.6494, 3.7160

Achromatomaly

67.1266, 8.4755, 2.4221

CSS Examples

Text

The CSS property to change the color of the text to HunterLab 66.6172, 31.3233, 1.7253 is called "color". The color property can be set on classes, ids or directly on the HTML element.

This example shows how text in the color `rgb(238, 153, 183)` looks like.

```
.text, #text, p{  
    color:rgb(238, 153, 183)  
}
```

If you want to add a text shadow in that color use the text-shadow property, you can generate a text shadow directly with our [CSS Text Shadow Generator](#).

Here you see how black text with a 4 pixel rgb(238, 153, 183) colored shadow looks like.

```
.shadow{ text-shadow: 4px 4px 2px rgb(238, 153, 183) }
```

Border

The CSS property to change the border of an element to HunterLab 66.6172, 31.3233, 1.7253 is called "border". The border property can be set on classes, ids or directly on the HTML element.

This example shows the color as border, it can be applied via the CSS property "border" or "border-color".

```
.border, #border, table{ border:4px solid rgb(238, 153, 183) }
```


If only the border color should be changed use the property `border-color`.

```
.border{ border-color:rgb(238, 153, 183) }
```

If you want to add a box shadow in that color use:

Here you see how a box with a 4 pixel `rgb(238, 153, 183)` colored shadow looks like.

```
.boxshadow{ -moz-box-shadow:4px 4px 4px  
4px rgb(238, 153, 183); -webkit-box-  
shadow:4px 4px 4px 4px rgb(238, 153, 183);  
box-shadow:4px 4px 4px 4px rgb(238, 153,  
183) }
```

Background

The CSS property to change the background color of an element to HunterLab 66.6172, 31.3233, 1.7253 is called "background". The background property can be set on classes, ids or directly on the HTML element.

```
.background, #background, body{  
background: rgb(238, 153, 183) }
```

If only the background color should be changed can be used:

```
.background{ background-color: rgb(238,  
153, 183) }
```

This example shows the color as background, it is applied via the CSS property "background".

To optimize and compress your CSS code, you can use our [online CSS compressor and optimizer](#) based on csstidy. If you want to create a linear or radial gradient as background or border, check our [CSS Gradient Generator](#).

Hey! You found this booklet interesting? Support Converting Colors with the new Membership Option!

The pro membership hides all ads, plus gives you double the colors in the color bucket, and more awesome pro features!

[Learn more, Memberships starting at \\$2.50/m!](#)

**Follow me
on Twitter!**

@ConvertingColor