

Converting Colors

HunterLab(66.6374, 12.3777,
3.7937)

Have a look what the booklet for
HunterLab(66.6374, 12.3777,
3.7937) contains.

HunterLab(66.6386, 12.3558, 3.8040)	3
<i>Conversions</i>	4
<i>Details</i>	6
<i>Harmonies</i>	12
<i>Previews</i>	24
<i>Color Blindness Simulation</i>	28
<i>CSS Examples</i>	31

Color

**HunterLab(66.6386, 12.3558,
3.8040)**

Conversions

Conversions Part 1

Format	Color
Hex	D1A7B2
RGB	209, 167, 178
RGB Percent	82%, 65%, 70%
CMY	0.1804, 0.3451, 0.3020
CMYK	0.00, 0.20, 0.15, 0.18
HSL	344°, 31%, 74%
HSV	344°, 20%, 82%
XYZ	48.1490, 44.4070, 48.1531
YIQ	180.8120, 21.5010, 12.3250

Conversions

Conversions Part 2

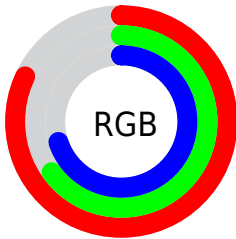
Format	Color
R _Y B	209, 167, 178
Decimal	13739954
CIE Lab	72.50, 17.12, 0.21
CIE LCh	73, 17.119, 0.705
Yxy	44.4090, 0.3422, 0.3156
Android (android.graphics.Color)	4291930034 (0xFFD1A7B2)
YUV	180.8120, -1.3863, 24.7209
Hunter-Lab	66.6386, 12.3558, 3.8040

Details

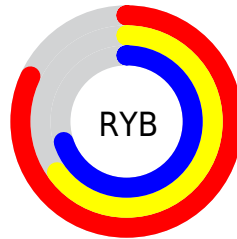
The HunterLab color $66.6386, 12.3558, 3.8040$ is a light color, and the websafe version is hex $CC9999$. A complement of this color would be $76.0886, -18.3640, 4.9310$, and the grayscale version is $67.8981, -3.6229, 3.6890$.

A 20% lighter version of the original color is $89.1308, 8.6660, 3.2931$, and $45.4006, 11.6017, 2.8411$ is the 20% darker color. If you saturate the color by 10%, you get $60.6421, 20.9251, 4.0515$, and if you desaturate by 10%, it is $73.0415, 3.9750, 3.9202$.

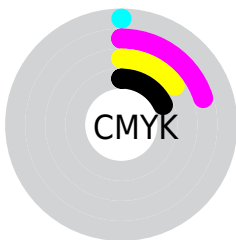
Distribution



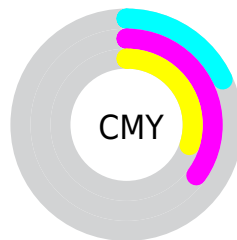
- Red (82%)
- Green (65%)
- Blue (70%)



- Red (82%)
- Yellow (65%)
- Blue (70%)



- Cyan (0%)
- Magenta (20%)
- Yellow (15%)
- Black (18%)



- Cyan (18%)
- Magenta (35%)
- Yellow (30%)

Brightness & Saturation Gradients

These gradients show how the HunterLab color 66.6386, 12.3558, 3.8040 changes by changing the brightness by 10 percent. The first figure shows a shift by +10% for each color and the second figure -10%.

Similar to the brightness gradients but the following saturation gradients show a change of the HunterLab color 66.6386, 12.3558, 3.8040 by changing the saturation by 10% instead.

66.6386, 12.3558,
3.8040

66.6386, 12.3558,
3.8040

190.8860, 11.9040,
10.6431

55.6706, 12.0981,
3.1977

90.4615, 12.6446,
5.1210

45.3794, 11.7576,
2.6265

103.2515, 12.6935,
5.8261

35.8145, 11.3203,
2.0939

116.5932, 12.6847,
6.5608

27.0358, 10.7707,
1.6031

130.4646, 12.6226,
7.3241

19.1215, 10.0883,
1.1579

144.8463, 12.5106,
8.1148

12.1788, 9.2459,
0.7635

159.7207, 12.3518,

5.2620, 13.8940,

8.9321

0.4522

175.0721, 12.1488,
9.7751

0.0000, NaN, NaN

0.0000, NaN, NaN

■ 66.6386, 12.3558,
3.8040

■ 66.6386, 12.3558,
3.8040

■ 60.6421, 20.9251,
4.0515

■ 73.0415, 3.9750,
3.9202

■ 55.1232, 29.6045,
4.7300

■ 79.7854, -4.1852,
4.3333

■ 50.1754, 38.2050,
5.9107

■ 86.8230, -12.1332,
4.9919

■ 45.9040, 46.3894,
7.6420

■ 94.1156, -19.8891,
5.8534

■ 42.4178, 53.6422,

■ 96.0705, -19.2880,

9.9167

0.4733

■ 39.8073, 59.3256,
12.6315

■ 38.1094, 62.8799,
15.5668

■ 37.1868, 64.4183,
18.3343

Harmonies

Analogous

The Analogous color harmony consists of three colors that are next to each other on the color wheel.



66.6401, 10.2412, -3.8535



66.6386, 12.3558, 3.8040



66.6401, 10.0393, 10.6052

Triad

The Triadic color harmony groups three colors that are evenly spaced from another and form a triangle on the color wheel.



66.6401, 12.3536, 3.8052



66.6401, -11.1546, 14.9146



66.6401, -10.8448, -10.2758

Complementary

The Complementary color scheme is a pair of colors which are on the opposite of each other on the color wheel.



66.6386, 12.3558, 3.8040



76.0886, -18.3640, 4.9310

Split Complementary

Split-complementary colors differ from the complementary color scheme. The scheme consists of three colors, the original color and two neighbors of the complement color.



66.6401, -16.1480, -4.1975



66.6386, 12.3558, 3.8040



66.6401, -16.3209, 10.3305

Square

The Square scheme is like the rectangle color scheme, but the four colors are evenly spaced on the color wheel.



66.6401, 12.3536, 3.8052



66.6401, -3.7464, 16.5421



66.6401, -18.1064, 3.4491



66.6401, -3.3721, -12.5356

Rectangle

The Rectangle color scheme consists of four colors that form a rectangle on the color wheel.



66.6386, 12.3558, 3.8040



66.6401, 6.3570, 13.8880



66.6401, -18.1064, 3.4491



66.6401, -12.9277, -8.5790

Sweetspot

The Sweet Spot groups the original color and five complimentary colors.



66.6401, 12.3536, 3.8052



94.8248, 0.8320, 5.0768



66.4993, 13.9858, -12.5610



43.6137, 0.6984, 2.3342

0.0000, NaN, NaN



46.2646, -2.4686, 2.5136

Same Dimension

The Same Dimension uses a secret algorithm to generate beautiful new colors.



66.6401, 12.3536, 3.8052



80.2490, 19.9345, 4.8344



69.0742, 5.6249, 11.2790



34.4359, 1.5974, 1.8459



29.2235, 50.6702, 14.0465



7.0053, 12.3314, 1.9336

Inverse Universe

The Inverse Universe completely reimagines the original color for something new.



66.6401, 12.3536, 3.8052



80.2490, 19.9345, 4.8344



73.3207, -11.6593, -3.8030



34.4359, 1.5974, 1.8459



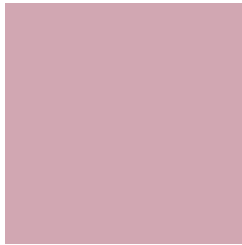
29.2235, 50.6702, 14.0465



7.0053, 12.3314, 1.9336

Previews

White Background



This preview shows how the HunterLab color 66.6386, 12.3558, 3.8040 looks on a white background.

Color Contrast Check

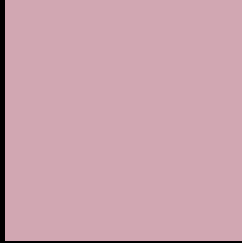
Large Text (above 18pt) WCAG AA × Fail

Any Text WCAG AA × Fail

Large Text (above 18pt) WCAG AAA × Fail

Any Text WCAG AAA × Fail

Black Background



This preview shows how the HunterLab color 66.6386, 12.3558, 3.8040 looks on a black background.

Color Contrast Check

Large Text (above 18pt) WCAG AA ✓ Pass

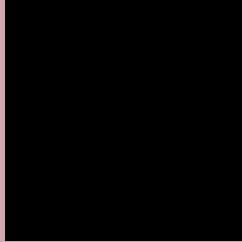
Any Text WCAG AA ✓ Pass

Large Text (above 18pt) WCAG AAA ✓ Pass

Any Text WCAG AAA ✓ Pass

If you want to check with other color combinations, try the [Color Contrast Checker](#).

HunterLab 66.6386, 12.3558, 3.8040 Background



This preview shows how black text looks on a background with the HunterLab color 66.6386, 12.3558, 3.8040.



This preview shows how white text looks on a background with the HunterLab color 66.6386, 12.3558,

3.8040.

Color Blindness Simulation

Color vision deficiency is a very complex topic, and I could not describe the different causes any better than Wikipedia does, so if you want to learn more, you should check out their [article about color blindness](#).

Dichromacy



Original Color

66.6386, 12.3558, 3.8040

Protanopia

66.7894, -1.4361, 0.8746

Deuteranopia

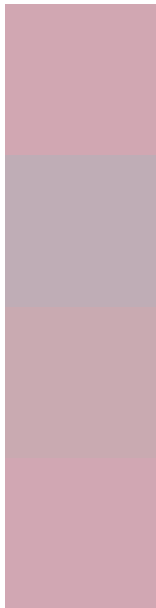
66.6447, 5.1131, 4.1510



Tritanopia

66.6993, 12.6737, 2.9384

Trichromacy



Original Color

66.6386, 12.3558, 3.8040

Protanomaly

66.5890, 3.7568, 1.6926

Deuteranomaly

66.5893, 7.8437, 4.1338

Tritanomaly

66.6689, 12.5142, 3.3726

Monochromacy



Original Color

66.6386, 12.3558, 3.8040

Achromatopsia

67.9762, -3.6270, 3.6933

Achromatomaly

67.3961, 1.9009, 3.5759

CSS Examples

Text

The CSS property to change the color of the text to HunterLab 66.6386, 12.3558, 3.8040 is called "color". The color property can be set on classes, ids or directly on the HTML element.

This example shows how text in the color `rgb(209, 167, 178)` looks like.

```
.text, #text, p{  
    color:rgb(209, 167, 178)  
}
```

If you want to add a text shadow in that color use the text-shadow property, you can generate a text shadow directly with our [CSS Text Shadow Generator](#).

Here you see how black text with a 4 pixel rgb(209, 167, 178) colored shadow looks like.

```
.shadow{ text-shadow: 4px 4px 2px rgb(209, 167, 178) }
```

Border

The CSS property to change the border of an element to HunterLab 66.6386, 12.3558, 3.8040 is called "border". The border property can be set on classes, ids or directly on the HTML element.

This example shows the color as border, it can be applied via the CSS property "border" or "border-color".

```
.border, #border, table{ border:4px solid rgb(209, 167, 178) }
```


If only the border color should be changed use the property `border-color`.

```
.border{ border-color:rgb(209, 167, 178) }
```

If you want to add a box shadow in that color use:

Here you see how a box with a 4 pixel `rgb(209, 167, 178)` colored shadow looks like.

```
.boxshadow{ -moz-box-shadow:4px 4px 4px  
4px rgb(209, 167, 178); -webkit-box-  
shadow:4px 4px 4px 4px rgb(209, 167, 178);  
box-shadow:4px 4px 4px 4px rgb(209, 167,  
178) }
```

Background

The CSS property to change the background color of an element to HunterLab 66.6386, 12.3558, 3.8040 is called "background". The background property can be set on classes, ids or directly on the HTML element.

```
.background, #background, body{  
background: rgb(209, 167, 178) }
```

If only the background color should be changed can be used:

```
.background{ background-color: rgb(209,  
167, 178) }
```

This example shows the color as background, it is applied via the CSS property "background".

To optimize and compress your CSS code, you can use our [online CSS compressor and optimizer](#) based on csstidy. If you want to create a linear or radial gradient as background or border, check our [CSS Gradient Generator](#).

Hey! You found this booklet interesting? Support Converting Colors with the new Membership Option!

The pro membership hides all ads, plus gives you double the colors in the color bucket, and more awesome pro features!

[Learn more, Memberships starting at \\$2.50/m!](#)

**Follow me
on Twitter!**

@ConvertingColor