

Converting Colors

HunterLab(66.6942, 0.7542,
15.5267)

Have a look what the booklet for
HunterLab(66.6942, 0.7542,
15.5267) contains.

HunterLab(66.6932, 0.8619, 15.4599)	3
<i>Conversions</i>	4
<i>Details</i>	6
<i>Harmonies</i>	12
<i>Previews</i>	24
<i>Color Blindness Simulation</i>	28
<i>CSS Examples</i>	31

Color

**HunterLab(66.6932, 0.8619,
15.4599)**

Conversions

Conversions Part 1

Format	Color
Hex	C6AE96
RGB	198, 174, 150
RGB Percent	78%, 68%, 59%
CMY	0.2235, 0.3176, 0.4118
CMYK	0.00, 0.12, 0.24, 0.22
HSL	30°, 30%, 68%
HSV	30°, 24%, 78%
XYZ	43.9297, 44.4798, 35.1243
YIQ	178.4400, 22.0080, -2.3760

Conversions

Conversions Part 2

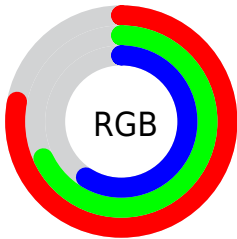
Format	Color
RYB	198, 198, 150
Decimal	13020822
CIELab	72.55, 4.91, 15.50
CIELCh	73, 16.263, 72.433
Yxy	44.4818, 0.3556, 0.3601
Android (android.graphics.Color)	4291210902 (0xFFC6AE96)
YUV	178.4400, -14.0209, 17.1541
Hunter-Lab	66.6932, 0.8619, 15.4599

Details

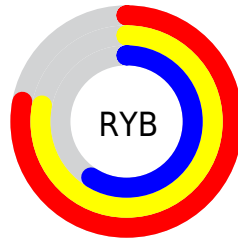
The HunterLab color $66.6932, 0.8619, 15.4599$ is a light color, and the websafe version is hex $CC9999$. A complement of this color would be $63.9001, -5.9365, -10.3008$, and the grayscale version is $66.9583, -3.5727, 3.6380$.

A 20% lighter version of the original color is $90.3650, 0.2001, 18.2041$, and $45.5513, 1.4534, 12.7293$ is the 20% darker color. If you saturate the color by 10%, you get $63.4129, 3.3851, 19.3217$, and if you desaturate by 10%, it is $70.1009, -1.3540, 11.0901$.

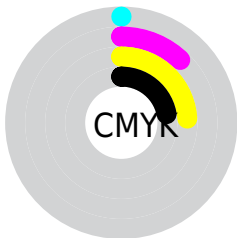
Distribution



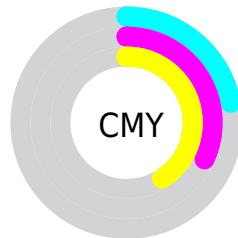
- Red (78%)
- Green (68%)
- Blue (59%)



- Red (78%)
- Yellow (78%)
- Blue (59%)



- Cyan (0%)
- Magenta (12%)
- Yellow (24%)
- Black (22%)



- Cyan (22%)
- Magenta (32%)
- Yellow (41%)

Brightness & Saturation Gradients

These gradients show how the HunterLab color 66.6932, 0.8619, 15.4599 changes by changing the brightness by 10 percent. The first figure shows a shift by +10% for each color and the second figure -10%.

Similar to the brightness gradients but the following saturation gradients show a change of the HunterLab color 66.6932, 0.8619, 15.4599 by changing the saturation by 10% instead.

■ 66.6932, 0.8619,
15.4599

■ 66.6932, 0.8619,
15.4599

190.9636, -3.9609,
28.0991

■ 55.7221, 1.1954,
14.0273

■ 90.5220, 0.0495,
18.2809

■ 45.4275, 1.4789,
12.5664

■ 103.3147, -0.4182,
19.6793

■ 35.8589, 1.7041,
11.0640

116.6590, -0.9242,
21.0752

■ 27.0763, 1.8628,
9.4988

130.5329, -1.4662,
22.4715

■ 19.1575, 1.9431,
7.8358

144.9170, -2.0423,
23.8705

■ 12.2098, 1.9269,
6.4649

159.7938, -2.6511,

■ 5.3126, 3.7423,

25.2739

3.7188

175.1474, -3.2910,
26.6830

0.0000, NaN, NaN

0.0000, NaN, NaN

■ 66.6932, 0.8619,
15.4599

■ 66.6932, 0.8619,
15.4599

■ 63.4129, 3.3851,
19.3217

■ 70.1009, -1.3540,
11.0901

■ 60.2664, 6.2404,
22.6193

■ 73.6216, -3.2767,
6.2596

■ 57.2668, 9.4395,
25.2987

■ 77.2479, -4.9301,
1.0146

■ 54.4265, 12.9883,
27.3071

■ 80.9717, -6.3353,
-4.6040

■ 51.7582, 16.8802,

■ 84.7859, -7.5129,

28.6008

-10.5599

■ 49.2744, 21.0909,
29.1553

■ 88.1631, -11.3659,
-9.4973

■ 46.9856, 25.5702,
28.9849

■ 91.3797, -16.3852,
-5.3636

■ 45.7523, 28.2072,
28.6862

■ 94.6558, -21.3394,
-1.3070

■ 95.2606, -22.2378,
-0.5739

Harmonies

Analogous

The Analogous color harmony consists of three colors that are next to each other on the color wheel.



66.6947, 7.4524, 12.2628



66.6932, 0.8619, 15.4599



66.6947, -6.6478, 15.7176

Triad

The Triadic color harmony groups three colors that are evenly spaced from another and form a triangle on the color wheel.



66.6947, 0.8597, 15.4608



66.6947, -17.1075, 0.5996



66.6947, 6.4802, -7.3442

Complementary

The Complementary color scheme is a pair of colors which are on the opposite of each other on the color wheel.



66.6932, 0.8619, 15.4599



63.9001, -5.9365, -10.3008

Split Complementary

Split-complementary colors differ from the complementary color scheme. The scheme consists of three colors, the original color and two neighbors of the complement color.



66.6947, -0.4196, -11.2523



66.6932, 0.8619, 15.4599



66.6947, -13.9055, -6.3365

Square

The Square scheme is like the rectangle color scheme, but the four colors are evenly spaced on the color wheel.



66.6947, 0.8597, 15.4608



66.6947, -16.7991, 7.6511



66.6947, -7.8719, -10.8644



66.6947, 10.7949, -0.6574

Rectangle

The Rectangle color scheme consists of four colors that form a rectangle on the color wheel.



66.6932, 0.8619, 15.4599



66.6947, -11.1435, 14.2306



66.6947, -7.8719, -10.8644



66.6947, 4.3736, -9.0581

Sweetspot

The Sweet Spot groups the original color and five complimentary colors.



66.6947, 0.8597, 15.4608



96.6133, -3.6656, 10.2291



60.7247, 16.7065, -1.3879



44.5642, -1.6253, 4.9177

0.0000, NaN, NaN



46.2646, -2.4686, 2.5136

Same Dimension

The Same Dimension uses a secret algorithm to generate beautiful new colors.



66.6947, 0.8597, 15.4608



86.4623, 2.8359, 23.3314



73.8892, -10.9618, 22.1847



33.9096, -1.0971, 4.1555



37.1271, 22.2101, 23.2664



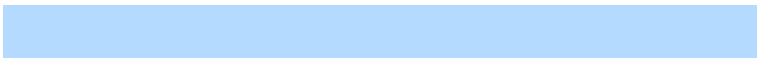
8.9306, 2.9809, 5.5552

Inverse Universe

The Inverse Universe completely reimagines the original color for something new.



63.9001, -5.9365, -10.3008



81.9770, -8.0360, -18.0521



56.8986, 6.0793, -20.5045



33.3899, -2.3675, -0.6285



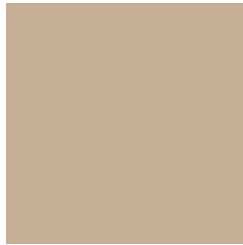
29.3664, 7.0522, -51.9291



7.4378, -0.3519, -8.5371

Previews

White Background



This preview shows how the HunterLab color 66.6932, 0.8619, 15.4599 looks on a white background.

Color Contrast Check

Large Text (above 18pt) WCAG AA × Fail

Any Text WCAG AA × Fail

Large Text (above 18pt) WCAG AAA × Fail

Any Text WCAG AAA × Fail

Black Background



This preview shows how the HunterLab color 66.6932, 0.8619, 15.4599 looks on a black background.

Color Contrast Check

Large Text (above 18pt) WCAG AA ✓ Pass

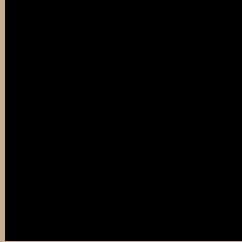
Any Text WCAG AA ✓ Pass

Large Text (above 18pt) WCAG AAA ✓ Pass

Any Text WCAG AAA ✓ Pass

If you want to check with other color combinations, try the [Color Contrast Checker](#).

HunterLab 66.6932, 0.8619, 15.4599 Background



This preview shows how black text looks on a background with the HunterLab color 66.6932, 0.8619, 15.4599.



This preview shows how white text looks on a background with the HunterLab color 66.6932, 0.8619,

15.4599.

Color Blindness Simulation

Color vision deficiency is a very complex topic, and I could not describe the different causes any better than Wikipedia does, so if you want to learn more, you should check out their [article about color blindness](#).

Dichromacy



Original Color

66.6932, 0.8619, 15.4599

Protanopia

66.8376, -4.5808, 14.7535

Deuteranopia

66.5878, 4.9746, 15.0488



Tritanopia

66.5968, 9.6775, 1.3216

Trichromacy



Original Color

66.6932, 0.8619, 15.4599

Protanomaly

66.8992, -2.8911, 15.2243

Deuteranomaly

66.5552, 3.4011, 14.9884

Tritanomaly

66.6960, 6.3954, 6.9599

Monochromacy



Original Color

66.6932, 0.8619, 15.4599

Achromatopsia

66.7234, -3.5602, 3.6252

Achromatomaly

66.7725, -2.4430, 8.2077

CSS Examples

Text

The CSS property to change the color of the text to HunterLab 66.6932, 0.8619, 15.4599 is called "color". The color property can be set on classes, ids or directly on the HTML element.

This example shows how text in the color `rgb(198, 174, 150)` looks like.

```
.text, #text, p{  
    color:rgb(198, 174, 150)  
}
```

If you want to add a text shadow in that color use the text-shadow property, you can generate a text shadow directly with our [CSS Text Shadow Generator](#).

Here you see how black text with a 4 pixel rgb(198, 174, 150) colored shadow looks like.

```
.shadow{ text-shadow: 4px 4px 2px rgb(198, 174, 150) }
```

Border

The CSS property to change the border of an element to HunterLab 66.6932, 0.8619, 15.4599 is called "border". The border property can be set on classes, ids or directly on the HTML element.

This example shows the color as border, it can be applied via the CSS property "border" or "border-color".

```
.border, #border, table{ border:4px solid rgb(198, 174, 150) }
```


If only the border color should be changed use the property `border-color`.

```
.border{ border-color:rgb(198, 174, 150) }
```

If you want to add a box shadow in that color use:

Here you see how a box with a 4 pixel `rgb(198, 174, 150)` colored shadow looks like.

```
.boxshadow{ -moz-box-shadow:4px 4px 4px  
4px rgb(198, 174, 150); -webkit-box-  
shadow:4px 4px 4px 4px rgb(198, 174, 150);  
box-shadow:4px 4px 4px 4px rgb(198, 174,  
150) }
```

Background

The CSS property to change the background color of an element to HunterLab 66.6932, 0.8619, 15.4599 is called "background". The background property can be set on classes, ids or directly on the HTML element.

```
.background, #background, body{  
background: rgb(198, 174, 150) }
```

If only the background color should be changed can be used:

```
.background{ background-color: rgb(198,  
174, 150) }
```

This example shows the color as background, it is applied via the CSS property "background".

To optimize and compress your CSS code, you can use our [online CSS compressor and optimizer](#) based on csstidy. If you want to create a linear or radial gradient as background or border, check our [CSS Gradient Generator](#).

Hey! You found this booklet interesting? Support Converting Colors with the new Membership Option!

The pro membership hides all ads, plus gives you double the colors in the color bucket, and more awesome pro features!

[Learn more, Memberships starting at \\$2.50/m!](#)

**Follow me
on Twitter!**

@ConvertingColor