

Converting Colors

HunterLab(66.9685, -1.1813,
3.9595)

Have a look what the booklet for
HunterLab(66.9685, -1.1813, 3.9595)
contains.

HunterLab(66.9694, -1.1845, 3.9558)	3
<i>Conversions</i>	4
<i>Details</i>	6
<i>Harmonies</i>	12
<i>Previews</i>	24
<i>Color Blindness Simulation</i>	28
<i>CSS Examples</i>	31

Color

**HunterLab(66.9694, -1.1845,
3.9558)**

Conversions

Conversions Part 1

Format	Color
Hex	B8B1B2
RGB	184, 177, 178
RGB Percent	72%, 69%, 70%
CMY	0.2784, 0.3059, 0.3020
CMYK	0.00, 0.04, 0.03, 0.28
HSL	351°, 5%, 71%
HSV	351°, 4%, 72%
XYZ	43.5252, 44.8490, 48.4823
YIQ	179.2070, 3.8510, 1.7950

Conversions

Conversions Part 2

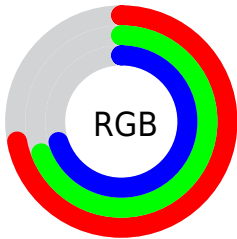
Format	Color
RYB	184, 177, 178
Decimal	12104114
CIELab	72.79, 2.67, 0.37
CIELCh	73, 2.691, 7.871
Yxy	44.8509, 0.3180, 0.3277
Android (android.graphics.Color)	4290294194 (0xFFB8B1B2)
YUV	179.2070, -0.5951, 4.2035
Hunter-Lab	66.9694, -1.1845, 3.9558

Details

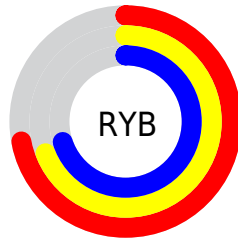
The HunterLab color $66.9694, -1.1845, 3.9558$ is a light color, and the websafe version is hex `CCCCCC`. A complement of this color would be $68.5917, -5.9978, 3.4344$, and the grayscale version is $67.2296, -3.5872, 3.6527$.

A 20% lighter version of the original color is $90.9635, -2.3466, 5.2729$, and $45.5206, -0.1787, 2.7756$ is the 20% darker color. If you saturate the color by 10%, you get $61.2107, 5.5589, 4.6045$, and if you desaturate by 10%, it is $72.9982, -7.7181, 3.4969$.

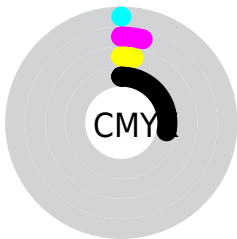
Distribution



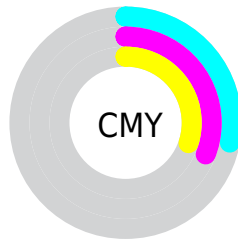
- Red (72%)
- Green (69%)
- Blue (70%)



- Red (72%)
- Yellow (69%)
- Blue (70%)



- Cyan (0%)
- Magenta (4%)
- Yellow (3%)
- Black (28%)



- Cyan (28%)
- Magenta (31%)
- Yellow (30%)

Brightness & Saturation Gradients

These gradients show how the HunterLab color 66.9694, -1.1845, 3.9558 changes by changing the brightness by 10 percent. The first figure shows a shift by +10% for each color and the second figure -10%.

Similar to the brightness gradients but the following saturation gradients show a change of the HunterLab color 66.9694, -1.1845, 3.9558 by changing the saturation by 10% instead.

■ 66.9694, -1.1845,
3.9558

■ 66.9694, -1.1845,
3.9558

191.3556, -6.8398,
10.8585

■ 55.9822, -0.7359,
3.3406

■ 90.8277, -2.2082,
5.2889

■ 45.6705, -0.3307,
2.7599

103.6341, -2.7747,
6.0016

■ 36.0835, 0.0251,
2.2173

116.9916, -3.3755,
6.7436

■ 27.2808, 0.3253,
1.7154

130.8782, -4.0087,
7.5138

■ 19.3399, 0.5615,
1.2580

145.2746, -4.6730,
8.3113

■ 12.3668, 0.7207,
0.8496

160.1632, -5.3671,

■ 5.5612, 1.7918,

9.1351

0.5774

175.5283, -6.0897,
9.9844

0.0000, NaN, NaN

0.0000, NaN, NaN

■ 66.9694, -1.1845,
3.9558

■ 66.9694, -1.1845,
3.9558

■ 61.2107, 5.5589,
4.6045

■ 72.9982, -7.7181,
3.4969

■ 55.7634, 12.5240,
5.4733

■ 79.2565, -14.0577,
3.1947

■ 50.6864, 19.6849,
6.5983

■ 85.7168, -20.2304,
3.0251

■ 46.0508, 26.9589,
8.0091

■ 92.3558, -26.2618,
2.9672

■ 41.9417, 34.1642,

■ 94.3030, -25.7602,

9.7165

-1.8236

■ 38.4545, 40.9769,
11.6916

■ 35.6833, 46.9178,
13.8409

■ 33.6972, 51.4310,
15.9950

■ 32.5062, 54.0933,
17.9335

Harmonies

Analogous

The Analogous color harmony consists of three colors that are next to each other on the color wheel.



66.9709, -1.3422, 2.7808



66.9694, -1.1845, 3.9558



66.9709, -1.6744, 5.0300

Triad

The Triadic color harmony groups three colors that are evenly spaced from another and form a triangle on the color wheel.



66.9709, -1.1862, 3.9569



66.9709, -5.0420, 5.4204



66.9709, -4.4775, 1.4988

Complementary

The Complementary color scheme is a pair of colors which are on the opposite of each other on the color wheel.



66.9694, -1.1845, 3.9558



68.5917, -5.9978, 3.4344

Split Complementary

Split-complementary colors differ from the complementary color scheme. The scheme consists of three colors, the original color and two neighbors of the complement color.



66.9709, -5.4585, 2.2306



66.9694, -1.1845, 3.9558



66.9709, -5.7828, 4.4986

Square

The Square scheme is like the rectangle color scheme, but the four colors are evenly spaced on the color wheel.



66.9709, -1.1862, 3.9569



66.9709, -3.9049, 5.8648



66.9709, -5.9347, 3.3324



66.9709, -3.2484, 1.3473

Rectangle

The Rectangle color scheme consists of four colors that form a rectangle on the color wheel.



66.9694, -1.1845, 3.9558



66.9709, -2.2975, 5.5476



66.9709, -5.9347, 3.3324



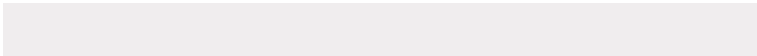
66.9709, -4.8469, 1.6857

Sweetspot

The Sweet Spot groups the original color and five complimentary colors.



66.9709, -1.1862, 3.9569



92.3953, -4.0748, 5.1314



67.0583, -0.5180, 1.2172



42.9195, -1.9139, 2.3809



96.5975, -5.1542, 5.2483



43.2801, -2.3093, 2.3515

Same Dimension

The Same Dimension uses a secret algorithm to generate beautiful new colors.



66.9709, -1.1862, 3.9569



89.1536, -0.4500, 5.4242



67.6662, -2.5710, 5.2025



31.0752, 0.0052, 1.9134



26.6114, 45.7929, 15.4899



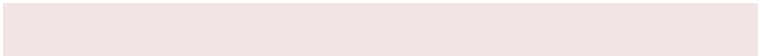
5.0630, 8.8435, 1.9306

Inverse Universe

The Inverse Universe completely reimagines the original color for something new.



66.9709, -1.1862, 3.9569



89.1536, -0.4500, 5.4242



67.8831, -4.6198, 2.1408



31.0752, 0.0052, 1.9134



26.6114, 45.7929, 15.4899



5.0630, 8.8435, 1.9306

Previews

White Background



This preview shows how the HunterLab color 66.9694, -1.1845, 3.9558 looks on a white background.

Color Contrast Check

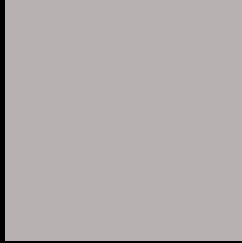
Large Text (above 18pt) WCAG AA × Fail

Any Text WCAG AA × Fail

Large Text (above 18pt) WCAG AAA × Fail

Any Text WCAG AAA × Fail

Black Background



This preview shows how the HunterLab color 66.9694, -1.1845, 3.9558 looks on a black background.

Color Contrast Check

Large Text (above 18pt) WCAG AA ✓ Pass

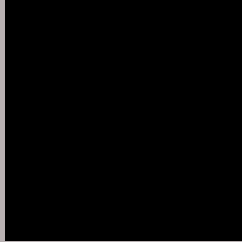
Any Text WCAG AA ✓ Pass

Large Text (above 18pt) WCAG AAA ✓ Pass

Any Text WCAG AAA ✓ Pass

If you want to check with other color combinations, try the [Color Contrast Checker](#).

HunterLab 66.9694, -1.1845, 3.9558 Background



This preview shows how black text looks on a background with the HunterLab color 66.9694, -1.1845, 3.9558.



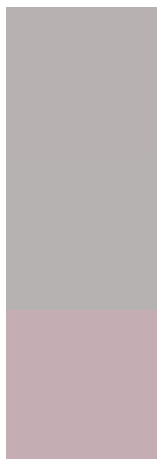
This preview shows how white text looks on a background with the HunterLab color 66.9694, -1.1845,

3.9558.

Color Blindness Simulation

Color vision deficiency is a very complex topic, and I could not describe the different causes any better than Wikipedia does, so if you want to learn more, you should check out their [article about color blindness](#).

Dichromacy



Original Color

66.9694, -1.1845, 3.9558

Protanopia

67.0822, -2.3155, 4.0683

Deuteranopia

66.9907, 4.9230, 3.6202



Tritanopia

66.9128, 2.3201, -1.3876

Trichromacy



Original Color

66.9694, -1.1845, 3.9558

Protanomaly

67.1732, -2.0008, 4.1803

Deuteranomaly

66.8829, 3.0821, 3.4607

Tritanomaly

66.9834, 0.8045, 0.6617

Monochromacy



Original Color

66.9694, -1.1845, 3.9558

Achromatopsia

67.1406, -3.5825, 3.6479

Achromatomaly

67.0218, -2.4644, 3.5275

CSS Examples

Text

The CSS property to change the color of the text to HunterLab 66.9694, -1.1845, 3.9558 is called "color". The color property can be set on classes, ids or directly on the HTML element.

This example shows how text in the color `rgb(184, 177, 178)` looks like.

```
.text, #text, p{  
    color:rgb(184, 177, 178)  
}
```

If you want to add a text shadow in that color use the text-shadow property, you can generate a text shadow directly with our [CSS Text Shadow Generator](#).

Here you see how black text with a 4 pixel rgb(184, 177, 178) colored shadow looks like.

```
.shadow{ text-shadow: 4px 4px 2px rgb(184, 177, 178) }
```

Border

The CSS property to change the border of an element to HunterLab 66.9694, -1.1845, 3.9558 is called "border". The border property can be set on classes, ids or directly on the HTML element.

This example shows the color as border, it can be applied via the CSS property "border" or "border-color".

```
.border, #border, table{ border:4px solid rgb(184, 177, 178) }
```


If only the border color should be changed use the property `border-color`.

```
.border{ border-color:rgb(184, 177, 178) }
```

If you want to add a box shadow in that color use:

Here you see how a box with a 4 pixel `rgb(184, 177, 178)` colored shadow looks like.

```
.boxshadow{ -moz-box-shadow:4px 4px 4px  
4px rgb(184, 177, 178); -webkit-box-  
shadow:4px 4px 4px 4px rgb(184, 177, 178);  
box-shadow:4px 4px 4px 4px rgb(184, 177,  
178) }
```

Background

The CSS property to change the background color of an element to HunterLab 66.9694, -1.1845, 3.9558 is called "background". The background property can be set on classes, ids or directly on the HTML element.

```
.background, #background, body{  
background: rgb(184, 177, 178) }
```

If only the background color should be changed can be used:

```
.background{ background-color: rgb(184,  
177, 178) }
```

This example shows the color as background, it is applied via the CSS property "background".

To optimize and compress your CSS code, you can use our [online CSS compressor and optimizer](#) based on csstidy. If you want to create a linear or radial gradient as background or border, check our [CSS Gradient Generator](#).

Hey! You found this booklet interesting? Support Converting Colors with the new Membership Option!

The pro membership hides all ads, plus gives you double the colors in the color bucket, and more awesome pro features!

[Learn more, Memberships starting at \\$2.50/m!](#)

**Follow me
on Twitter!**

@ConvertingColor