

Converting Colors

HunterLab(66.9932, 10.3135,
7.7546)

Have a look what the booklet for
HunterLab(66.9932, 10.3135,
7.7546) contains.

HunterLab(66.9578, 10.0869, 7.7606)	3
<i>Conversions</i>	4
<i>Details</i>	6
<i>Harmonies</i>	12
<i>Previews</i>	24
<i>Color Blindness Simulation</i>	28
<i>CSS Examples</i>	31

Color

**HunterLab(66.9578, 10.0869,
7.7606)**

Conversions

Conversions Part 1

Format	Color
Hex	D1A9AA
RGB	209, 169, 170
RGB Percent	82%, 66%, 67%
CMY	0.1804, 0.3372, 0.3333
CMYK	0.00, 0.19, 0.19, 0.18
HSL	359°, 30%, 74%
HSV	359°, 19%, 82%
XYZ	47.7381, 44.8335, 44.1678
YIQ	181.0740, 23.5190, 8.7910

Conversions

Conversions Part 2

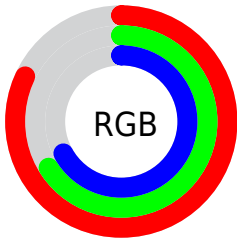
Format	Color
R _Y B	209, 169, 170
Decimal	13740458
CIE Lab	72.78, 14.76, 5.02
CIE LCh	73, 15.594, 18.789
Yxy	44.8355, 0.3491, 0.3279
Android (android.graphics.Color)	4291930538 (0xFFD1A9AA)
YUV	181.0740, -5.4595, 24.4911
Hunter-Lab	66.9578, 10.0869, 7.7606

Details

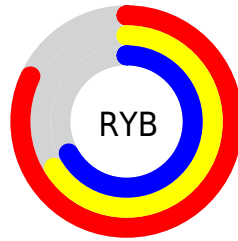
The HunterLab color **66.9578, 10.0869, 7.7606** is a light color, and the websafe version is hex **CC9999**. A complement of this color would be **76.5448, -16.0734, 0.6603**, and the grayscale version is **68.0236, -3.6296, 3.6959**.

A 20% lighter version of the original color is **89.4469, 6.0816, 8.0056**, and **45.7172, 9.6320, 6.1113** is the 20% darker color. If you saturate the color by 10%, you get **60.7931, 18.0350, 9.7909**, and if you desaturate by 10%, it is **73.5361, 2.4474, 5.9017**.

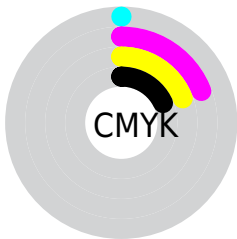
Distribution



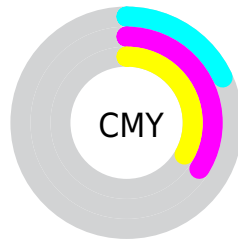
- Red (82%)
- Green (66%)
- Blue (67%)



- Red (82%)
- Yellow (66%)
- Blue (67%)



- Cyan (0%)
- Magenta (19%)
- Yellow (19%)
- Black (18%)





- Cyan (18%)
- Magenta (34%)
- Yellow (33%)

Brightness & Saturation Gradients


These gradients show how the HunterLab color 66.9578, 10.0869, 7.7606 changes by changing the brightness by 10 percent. The first figure shows a shift by +10% for each color and the second figure -10%.


Similar to the brightness gradients but the following saturation gradients show a change of the HunterLab color 66.9578, 10.0869, 7.7606 by changing the saturation by 10% instead.

 66.9578, 10.0869,
7.7606


 66.9578, 10.0869,
7.7606


191.3392, 8.7967,
16.3554

 55.9713, 9.9415,
6.9085


 90.8149, 10.1655,
9.5283

 45.6603, 9.7191,
6.0743


 103.6208, 10.1154,
10.4423

 36.0741, 9.4065,
5.2572

116.9777, 10.0113,
11.3771

 27.2723, 8.9892,
4.4540


130.8638, 9.8571,
12.3323

 19.3323, 8.4469,
3.6586

145.2596, 9.6559,
13.3080

 12.3603, 7.7518,
2.8586

160.1478, 9.4105,

 5.5511, 11.2921,

14.3039

3.8858

175.5124, 9.1234,
15.3198

0.0000, NaN, NaN

0.0000, NaN, NaN

■ 66.9578, 10.0869,
7.7606

■ 66.9578, 10.0869,
7.7606

■ 60.7931, 18.0350,
9.7909

■ 73.5361, 2.4474,
5.9017

■ 55.1167, 26.2526,
11.9900

■ 80.4601, -4.8819,
4.1969

■ 50.0276, 34.5965,
14.3316

■ 87.6813, -11.9314,
2.6285

■ 45.6387, 42.7729,
16.7403

■ 95.1603, -18.7376,
1.1774

■ 42.0690, 50.2894,

■ 96.0705, -19.2881,

19.0722

0.4733

■ 39.4190, 56.4884,
21.1176

■ 37.7323, 60.7372,
22.6514

■ 36.8915, 62.9463,
23.5129

■ 36.8331, 63.1088,
23.5606

Harmonies

Analogous

The Analogous color harmony consists of three colors that are next to each other on the color wheel.



66.9593, 10.5978, 1.0252



66.9578, 10.0869, 7.7606



66.9593, 5.8209, 12.8409

Triad

The Triadic color harmony groups three colors that are evenly spaced from another and form a triangle on the color wheel.



66.9593, 10.0846, 7.7617



66.9593, -13.7068, 11.7773



66.9593, -6.2550, -10.6519

Complementary

The Complementary color scheme is a pair of colors which are on the opposite of each other on the color wheel.



66.9578, 10.0869, 7.7606



76.5448, -16.0734, 0.6603

Split Complementary

Split-complementary colors differ from the complementary color scheme. The scheme consists of three colors, the original color and two neighbors of the complement color.



66.9593, -12.4823, -7.0746



66.9578, 10.0869, 7.7606



66.9593, -16.6615, 6.1626

Square

The Square scheme is like the rectangle color scheme, but the four colors are evenly spaced on the color wheel.



66.9593, 10.0846, 7.7617



66.9593, -7.9909, 14.9840



66.9593, -16.2230, -0.7514



66.9593, 0.9556, -10.1068

Rectangle

The Rectangle color scheme consists of four colors that form a rectangle on the color wheel.



66.9578, 10.0869, 7.7606



66.9593, 1.5225, 14.8279



66.9593, -16.2230, -0.7514



66.9593, -8.5271, -9.8776

Sweetspot

The Sweet Spot groups the original color and five complimentary colors.



66.9593, 10.0846, 7.7617



94.7100, 0.2094, 6.7164



68.0757, 16.2104, -10.3052



43.5549, 0.3800, 3.1738

0.0000, NaN, NaN



46.2646, -2.4686, 2.5136

Same Dimension

The Same Dimension uses a secret algorithm to generate beautiful new colors.



66.9593, 10.0846, 7.7617



80.6018, 16.6927, 10.7430



72.2811, 0.3658, 13.7539



34.3700, 1.2422, 2.7880



28.9257, 49.5680, 18.4450



6.8523, 11.7673, 4.1759

Inverse Universe

The Inverse Universe completely reimagines the original color for something new.



66.9593, 10.0846, 7.7617



80.6018, 16.6927, 10.7430



70.7189, -6.7463, -7.1147



34.3700, 1.2422, 2.7880



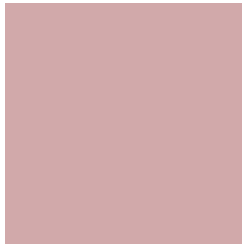
28.9257, 49.5680, 18.4450



6.8523, 11.7673, 4.1759

Previews

White Background



This preview shows how the HunterLab color 66.9578, 10.0869, 7.7606 looks on a white background.

Color Contrast Check

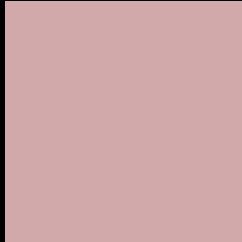
Large Text (above 18pt) WCAG AA × Fail

Any Text WCAG AA × Fail

Large Text (above 18pt) WCAG AAA × Fail

Any Text WCAG AAA × Fail

Black Background



This preview shows how the HunterLab color 66.9578, 10.0869, 7.7606 looks on a black background.

Color Contrast Check

Large Text (above 18pt) WCAG AA ✓ Pass

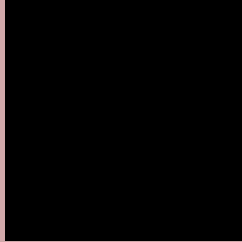
Any Text WCAG AA ✓ Pass

Large Text (above 18pt) WCAG AAA ✓ Pass

Any Text WCAG AAA ✓ Pass

If you want to check with other color combinations, try the [Color Contrast Checker](#).

HunterLab 66.9578, 10.0869, 7.7606 Background



This preview shows how black text looks on a background with the HunterLab color 66.9578, 10.0869, 7.7606.



This preview shows how white text looks on a background with the HunterLab color 66.9578, 10.0869,

7.7606.

Color Blindness Simulation

Color vision deficiency is a very complex topic, and I could not describe the different causes any better than Wikipedia does, so if you want to learn more, you should check out their [article about color blindness](#).

Dichromacy



Original Color

66.9578, 10.0869, 7.7606

Protanopia

67.0844, -2.4855, 5.4485

Deuteranopia

67.1052, 4.7250, 8.2680



Tritanopia

66.8090, 13.0280, 3.0751

Trichromacy



Original Color

66.9578, 10.0869, 7.7606

Protanomaly

66.9952, 1.6187, 6.3223

Deuteranomaly

67.1313, 6.2754, 8.3242

Tritanomaly

66.9638, 11.8759, 5.1033

Monochromacy



Original Color

66.9578, 10.0869, 7.7606

Achromatopsia

67.9762, -3.6270, 3.6933

Achromatomaly

67.5981, 0.9105, 5.1868

CSS Examples

Text

The CSS property to change the color of the text to HunterLab 66.9578, 10.0869, 7.7606 is called "color". The color property can be set on classes, ids or directly on the HTML element.

This example shows how text in the color `rgb(209, 169, 170)` looks like.

```
.text, #text, p{  
    color:rgb(209, 169, 170)  
}
```

If you want to add a text shadow in that color use the text-shadow property, you can generate a text shadow directly with our [CSS Text Shadow Generator](#).

Here you see how black text with a 4 pixel rgb(209, 169, 170) colored shadow looks like.

```
.shadow{ text-shadow: 4px 4px 2px rgb(209, 169, 170) }
```

Border

The CSS property to change the border of an element to HunterLab 66.9578, 10.0869, 7.7606 is called "border". The border property can be set on classes, ids or directly on the HTML element.

This example shows the color as border, it can be applied via the CSS property "border" or "border-color".

```
.border, #border, table{ border:4px solid rgb(209, 169, 170) }
```


If only the border color should be changed use the property `border-color`.

```
.border{ border-color:rgb(209, 169, 170) }
```

If you want to add a box shadow in that color use:

Here you see how a box with a 4 pixel `rgb(209, 169, 170)` colored shadow looks like.

```
.boxshadow{ -moz-box-shadow:4px 4px 4px  
4px rgb(209, 169, 170); -webkit-box-  
shadow:4px 4px 4px 4px rgb(209, 169, 170);  
box-shadow:4px 4px 4px 4px rgb(209, 169,  
170) }
```

Background

The CSS property to change the background color of an element to HunterLab 66.9578, 10.0869, 7.7606 is called "background". The background property can be set on classes, ids or directly on the HTML element.

```
.background, #background, body{  
background: rgb(209, 169, 170) }
```

If only the background color should be changed can be used:

```
.background{ background-color: rgb(209,  
169, 170) }
```

This example shows the color as background, it is applied via the CSS property "background".

To optimize and compress your CSS code, you can use our [online CSS compressor and optimizer](#) based on csstidy. If you want to create a linear or radial gradient as background or border, check our [CSS Gradient Generator](#).

Hey! You found this booklet interesting? Support Converting Colors with the new Membership Option!

The pro membership hides all ads, plus gives you double the colors in the color bucket, and more awesome pro features!

[Learn more, Memberships starting at \\$2.50/m!](#)

**Follow me
on Twitter!**

@ConvertingColor