

Converting Colors

HunterLab(67.0193, 2.5665,
7.5183)

Have a look what the booklet for
HunterLab(67.0193, 2.5665, 7.5183)
contains.

HunterLab(66.9152, 2.6647, 7.5830)	3
<i>Conversions</i>	4
<i>Details</i>	6
<i>Harmonies</i>	12
<i>Previews</i>	24
<i>Color Blindness Simulation</i>	28
<i>CSS Examples</i>	31

Color

**HunterLab(66.9152, 2.6647,
7.5830)**

Conversions

Conversions Part 1

Format	Color
Hex	C3AEAA
RGB	195, 174, 170
RGB Percent	76%, 68%, 67%
CMY	0.2353, 0.3176, 0.3333
CMYK	0.00, 0.11, 0.13, 0.24
HSL	10°, 17%, 72%
HSV	10°, 13%, 76%
XYZ	44.8974, 44.7764, 44.3065
YIQ	179.8230, 13.8000, 3.2080

Conversions

Conversions Part 2

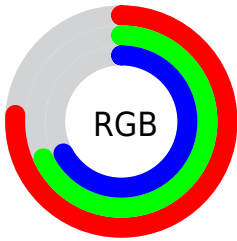
Format	Color
RYB	195, 175, 170
Decimal	12824234
CIELab	72.75, 6.88, 4.80
CIELCh	73, 8.391, 34.918
Yxy	44.7784, 0.3351, 0.3342
Android (android.graphics.Color)	4291014314 (0xFFC3AEAA)
YUV	179.8230, -4.8427, 13.3102
Hunter-Lab	66.9152, 2.6647, 7.5830

Details

The HunterLab color **66.9152, 2.6647, 7.5830** is a light color, and the websafe version is hex **CCCCCC**. A complement of this color would be **70.5314, -9.3966, -0.1047**, and the grayscale version is **67.5010, -3.6017, 3.6675**.

A 20% lighter version of the original color is **90.6478, 2.3545, 9.3059**, and **45.7054, 2.8661, 5.9798** is the 20% darker color. If you saturate the color by 10%, you get **61.7634, 8.1371, 10.2986**, and if you desaturate by 10%, it is **72.3123, -2.5263, 4.8059**.

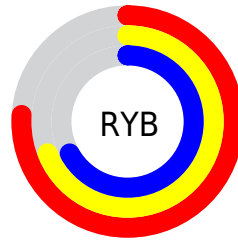
Distribution



Red (76%)

Green (68%)

Blue (67%)



Red (76%)

Yellow (69%)

Blue (67%)

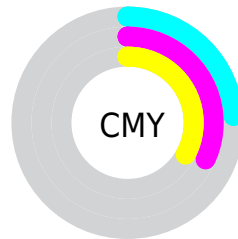


Cyan (0%)

Magenta (11%)

Yellow (13%)

Black (24%)



Cyan (24%)

Magenta (32%)

Yellow (33%)

Brightness & Saturation Gradients

These gradients show how the HunterLab color 66.9152, 2.6647, 7.5830 changes by changing the brightness by 10 percent. The first figure shows a shift by +10% for each color and the second figure -10%.

Similar to the brightness gradients but the following saturation gradients show a change of the HunterLab color 66.9152, 2.6647, 7.5830 by changing the saturation by 10% instead.

■ 66.9152, 2.6647,
7.5830

■ 66.9152, 2.6647,
7.5830

191.2787, -1.4445,
16.0956

■ 55.9312, 2.9010,
6.7425

■ 90.7677, 2.0333,
9.3294

■ 45.6228, 3.0811,
5.9206

103.5715, 1.6500,
10.2337

■ 36.0394, 3.1959,
5.1170

116.9264, 1.2252,
11.1591

■ 27.2407, 3.2355,
4.3287

130.8105, 0.7614,
12.1054

■ 19.3041, 3.1858,
3.5501

145.2044, 0.2608,
13.0724

■ 12.3360, 3.0248,
2.7696

160.0907, -0.2748,

■ 5.5134, 5.1433,

14.0600

3.8594

175.4536, -0.8437,
15.0678

0.0000, NaN, NaN

0.0000, NaN, NaN

■ 66.9152, 2.6647,
7.5830

■ 66.9152, 2.6647,
7.5830

■ 61.7634, 8.1371,
10.2986

■ 72.3123, -2.5263,
4.8059

■ 56.8898, 13.9141,
12.9198

■ 77.9197, -7.4568,
1.9832

■ 52.3412, 19.9895,
15.4026

■ 83.7137, -12.1590,
-0.8722

■ 48.1714, 26.3195,
17.6813

■ 89.6738, -16.6621,
-3.7528

■ 44.4426, 32.7950,

■ 95.0485, -23.0146,

19.6656

-0.8495

■ 41.2220, 39.2136,
21.2427

■ 38.5750, 45.2632,
22.2937

■ 36.5523, 50.5426,
22.7342

■ 35.4882, 53.5912,
22.8059

Harmonies

Analogous

The Analogous color harmony consists of three colors that are next to each other on the color wheel.



66.9167, 4.0332, 4.2488



66.9152, 2.6647, 7.5830



66.9167, -0.3775, 9.7648

Triad

The Triadic color harmony groups three colors that are evenly spaced from another and form a triangle on the color wheel.



66.9167, 2.6627, 7.5841



66.9167, -10.2070, 6.5857



66.9167, -2.9325, -3.8322

Complementary

The Complementary color scheme is a pair of colors which are on the opposite of each other on the color wheel.



66.9152, 2.6647, 7.5830



70.5314, -9.3966, -0.1047

Split Complementary

Split-complementary colors differ from the complementary color scheme. The scheme consists of three colors, the original color and two neighbors of the complement color.



66.9167, -6.7118, -3.1192



66.9152, 2.6647, 7.5830



66.9167, -10.8560, 3.0304

Square

The Square scheme is like the rectangle color scheme, but the four colors are evenly spaced on the color wheel.



66.9167, 2.6627, 7.5841



66.9167, -7.7970, 9.2118



66.9167, -9.5906, -0.5545



66.9167, 0.7562, -2.4510

Rectangle

The Rectangle color scheme consists of four colors that form a rectangle on the color wheel.



66.9152, 2.6647, 7.5830



66.9167, -2.9110, 10.3418



66.9167, -9.5906, -0.5545



66.9167, -4.2346, -3.8302

Sweetspot

The Sweet Spot groups the original color and five complimentary colors.



66.9167, 2.6627, 7.5841



95.8615, -2.5381, 6.8970



66.4264, 8.2037, -3.0488



44.5971, -0.9431, 3.3617

0.0000, NaN, NaN



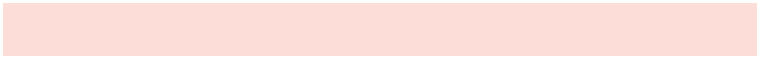
46.2646, -2.4686, 2.5136

Same Dimension

The Same Dimension uses a secret algorithm to generate beautiful new colors.



66.9167, 2.6627, 7.5841



87.8584, 5.2947, 11.0350



70.5182, -3.4921, 11.4165



32.1444, 0.3919, 3.0996



28.7533, 42.7450, 18.4660



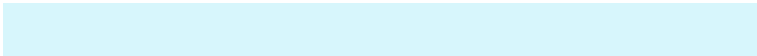
6.6412, 6.9136, 4.2133

Inverse Universe

The Inverse Universe completely reimagines the original color for something new.



70.5314, -9.3966, -0.1047



93.5881, -13.8329, -1.1552



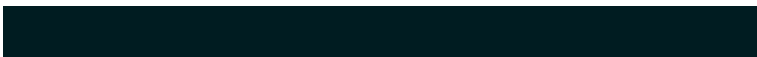
66.8033, -3.3489, -4.7182



33.3839, -3.7405, 0.4636



44.5728, -17.7102, -17.4809



9.6625, -4.1975, -3.0160

Previews

White Background



This preview shows how the HunterLab color 66.9152, 2.6647, 7.5830 looks on a white background.

Color Contrast Check

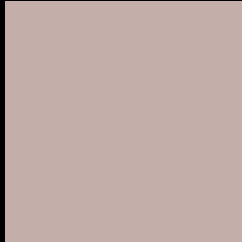
Large Text (above 18pt) WCAG AA × Fail

Any Text WCAG AA × Fail

Large Text (above 18pt) WCAG AAA × Fail

Any Text WCAG AAA × Fail

Black Background



This preview shows how the HunterLab color 66.9152, 2.6647, 7.5830 looks on a black background.

Color Contrast Check

Large Text (above 18pt) WCAG AA ✓ Pass

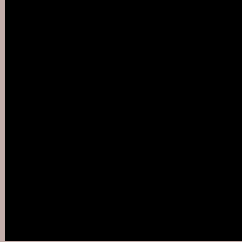
Any Text WCAG AA ✓ Pass

Large Text (above 18pt) WCAG AAA ✓ Pass

Any Text WCAG AAA ✓ Pass

If you want to check with other color combinations, try the [Color Contrast Checker](#).

HunterLab 66.9152, 2.6647, 7.5830 Background



This preview shows how black text looks on a background with the HunterLab color 66.9152, 2.6647, 7.5830.



This preview shows how white text looks on a background with the HunterLab color 66.9152, 2.6647,

Color Blindness Simulation

Color vision deficiency is a very complex topic, and I could not describe the different causes any better than Wikipedia does, so if you want to learn more, you should check out their [article about color blindness](#).

Dichromacy



Original Color

66.9152, 2.6647, 7.5830

Protanopia

66.9975, -2.9607, 6.6920

Deuteranopia

67.0310, 4.5322, 7.7452



Tritanopia

66.9912, 6.7606, 0.7755

Trichromacy



Original Color

66.9152, 2.6647, 7.5830

Protanomaly

67.0443, -1.3356, 7.2170

Deuteranomaly

66.9292, 4.1902, 7.6253

Tritanomaly

67.0210, 5.0851, 3.1880

Monochromacy



Original Color

66.9152, 2.6647, 7.5830

Achromatopsia

67.5582, -3.6047, 3.6706

Achromatomaly

67.2976, -1.6901, 5.2519

CSS Examples

Text

The CSS property to change the color of the text to HunterLab 66.9152, 2.6647, 7.5830 is called "color". The color property can be set on classes, ids or directly on the HTML element.

This example shows how text in the color `rgb(195, 174, 170)` looks like.

```
.text, #text, p{  
    color:rgb(195, 174, 170)  
}
```

If you want to add a text shadow in that color use the text-shadow property, you can generate a text shadow directly with our [CSS Text Shadow Generator](#).

Here you see how black text with a 4 pixel rgb(195, 174, 170) colored shadow looks like.

```
.shadow{ text-shadow: 4px 4px 2px rgb(195, 174, 170) }
```

Border

The CSS property to change the border of an element to HunterLab 66.9152, 2.6647, 7.5830 is called "border".

The border property can be set on classes, ids or directly on the HTML element.

This example shows the color as border, it can be applied via the CSS property "border" or "border-color".

```
.border, #border, table{ border:4px solid rgb(195, 174, 170) }
```


If only the border color should be changed use the property `border-color`.

```
.border{ border-color:rgb(195, 174, 170) }
```

If you want to add a box shadow in that color use:

Here you see how a box with a 4 pixel `rgb(195, 174, 170)` colored shadow looks like.

```
.boxshadow{ -moz-box-shadow:4px 4px 4px  
4px rgb(195, 174, 170); -webkit-box-  
shadow:4px 4px 4px 4px rgb(195, 174, 170);  
box-shadow:4px 4px 4px 4px rgb(195, 174,  
170) }
```

Background

The CSS property to change the background color of an element to HunterLab 66.9152, 2.6647, 7.5830 is called "background". The background property can be set on classes, ids or directly on the HTML element.

```
.background, #background, body{  
background: rgb(195, 174, 170) }
```

If only the background color should be changed can be used:

```
.background{ background-color: rgb(195,  
174, 170) }
```

This example shows the color as background, it is applied via the CSS property "background".

To optimize and compress your CSS code, you can use our [online CSS compressor and optimizer](#) based on csstidy. If you want to create a linear or radial gradient as background or border, check our [CSS Gradient Generator](#).

Hey! You found this booklet interesting? Support Converting Colors with the new Membership Option!

The pro membership hides all ads, plus gives you double the colors in the color bucket, and more awesome pro features!

[Learn more, Memberships starting at \\$2.50/m!](#)

**Follow me
on Twitter!**

@ConvertingColor