

Converting Colors

HunterLab(67.0210, 5.0851,
3.1880)

Have a look what the booklet for
HunterLab(67.0210, 5.0851, 3.1880)
contains.

HunterLab(67.0210, 5.0851, 3.1880)	3
<i>Conversions</i>	4
<i>Details</i>	6
<i>Harmonies</i>	12
<i>Previews</i>	24
<i>Color Blindness Simulation</i>	28
<i>CSS Examples</i>	31

Color

**HunterLab(67.0210, 5.0851,
3.1880)**

Conversions

Conversions Part 1

Format	Color
Hex	C4ADB4
RGB	196, 173, 180
RGB Percent	77%, 68%, 71%
CMY	0.2314, 0.3216, 0.2941
CMYK	0.00, 0.12, 0.08, 0.23
HSL	342°, 16%, 72%
HSV	342°, 12%, 77%
XYZ	45.9467, 44.9181, 49.4284
YIQ	180.6750, 11.4610, 7.0530

Conversions

Conversions Part 2

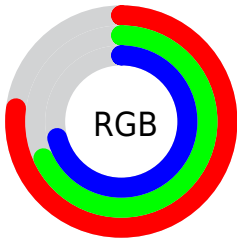
Format	Color
R _Y B	196, 173, 180
Decimal	12889524
CIE Lab	72.84, 9.49, -0.54
CIE LCh	73, 9.503, 356.744
Yxy	44.9201, 0.3275, 0.3202
Android (android.graphics.Color)	4291079604 (0xFFC4ADB4)
YUV	180.6750, -0.3328, 13.4400
Hunter-Lab	67.0210, 5.0851, 3.1880

Details

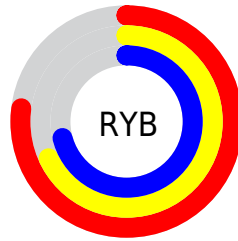
The HunterLab color $67.0210, 5.0851, 3.1880$ is a light color, and the websafe version is hex `CCCCCC`. A complement of this color would be $72.1383, -12.0218, 4.6694$, and the grayscale version is $67.8395, -3.6197, 3.6859$.

A 20% lighter version of the original color is $90.7885, 5.0772, 4.2079$, and $45.7797, 4.9775, 2.2922$ is the 20% darker color. If you saturate the color by 10%, you get $61.1699, 13.0009, 2.7825$, and if you desaturate by 10%, it is $73.1984, -2.6449, 3.8896$.

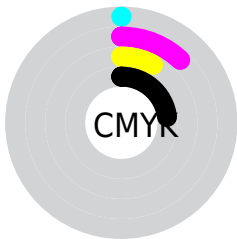
Distribution



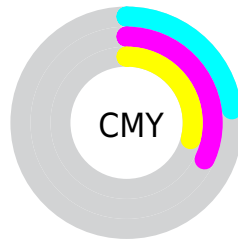
- Red (77%)
- Green (68%)
- Blue (71%)



- Red (77%)
- Yellow (68%)
- Blue (71%)



- Cyan (0%)
- Magenta (12%)
- Yellow (8%)
- Black (23%)



- Cyan (23%)
- Magenta (32%)
- Yellow (29%)

Brightness & Saturation Gradients

These gradients show how the HunterLab color 67.0210, 5.0851, 3.1880 changes by changing the brightness by 10 percent. The first figure shows a shift by +10% for each color and the second figure -10%.

Similar to the brightness gradients but the following saturation gradients show a change of the HunterLab color 67.0210, 5.0851, 3.1880 by changing the saturation by 10% instead.

■ 67.0210, 5.0851,
3.1880

■ 67.0210, 5.0851,
3.1880

191.4288, 1.9154,
9.7698

■ 56.0308, 5.1936,
2.6173

■ 90.8848, 4.6911,
4.4393

■ 45.7159, 5.2386,
2.0839

103.6938, 4.4190,
5.1139

■ 36.1255, 5.2093,
1.5921

117.0538, 4.1011,
5.8193

■ 27.3191, 5.0941,
1.1457

130.9428, 3.7404,
6.5544

■ 19.3740, 4.8762,
0.7497

145.3414, 3.3395,
7.3180

■ 12.3962, 4.5303,
0.4113

160.2322, 2.9004,

■ 5.6065, 7.0744,

8.1090

-0.0939

175.5995, 2.4252,
8.9265

0.0000, NaN, NaN

0.0000, NaN, NaN

■ 67.0210, 5.0851,
3.1880

■ 67.0210, 5.0851,
3.1880

■ 61.1699, 13.0009,
2.7825

■ 73.1984, -2.6449,
3.8896

■ 55.6983, 21.0741,
2.7351

■ 79.6516, -10.1826,
4.8303

■ 50.6788, 29.2080,
3.1223

■ 86.3453, -17.5449,
5.9685

■ 46.1968, 37.2076,
4.0213

■ 93.2500, -24.7533,
7.2704

■ 42.3490, 44.7346,

■ 94.8919, -24.0438,

5.4919

2.4686

■ 39.2327, 51.2919,
7.5429

■ 95.1188, -22.7569,
-0.7581

■ 36.9248, 56.2918,
10.0910

■ 35.4489, 59.2565,
12.9369

■ 34.7250, 60.3959,
15.2424

Harmonies

Analogous

The Analogous color harmony consists of three colors that are next to each other on the color wheel.



67.0225, 3.6472, -0.9199



67.0210, 5.0851, 3.1880



67.0225, 4.1490, 7.1718

Triad

The Triadic color harmony groups three colors that are evenly spaced from another and form a triangle on the color wheel.



67.0225, 5.0832, 3.1891



67.0225, -7.3468, 10.4487



67.0225, -8.1592, -3.4413

Complementary

The Complementary color scheme is a pair of colors which are on the opposite of each other on the color wheel.



67.0210, 5.0851, 3.1880



72.1383, -12.0218, 4.6694

Split Complementary

Split-complementary colors differ from the complementary color scheme. The scheme consists of three colors, the original color and two neighbors of the complement color.



67.0225, -10.9734, -0.0777



67.0210, 5.0851, 3.1880



67.0225, -10.5129, 7.9158

Square

The Square scheme is like the rectangle color scheme, but the four colors are evenly spaced on the color wheel.



67.0225, 5.0832, 3.1891



67.0225, -3.0982, 11.2005



67.0225, -11.8239, 4.1041



67.0225, -4.0599, -4.9000

Rectangle

The Rectangle color scheme consists of four colors that form a rectangle on the color wheel.



67.0210, 5.0851, 3.1880



67.0225, 2.3206, 9.2521



67.0225, -11.8239, 4.1041



67.0225, -9.2828, -2.4857

Sweetspot

The Sweet Spot groups the original color and five complimentary colors.



67.0225, 5.0832, 3.1891



96.5480, -1.1596, 4.9842



66.8262, 5.4576, -5.0620



44.3704, -0.1709, 2.2697

0.0000, NaN, NaN



46.2646, -2.4686, 2.5136

Same Dimension

The Same Dimension uses a secret algorithm to generate beautiful new colors.



67.0225, 5.0832, 3.1891



88.2054, 9.4689, 4.1162



68.0329, 1.8289, 7.4970



31.8233, 1.5026, 1.5484



27.8594, 48.5023, 11.8610



5.8984, 10.4760, 0.9068

Inverse Universe

The Inverse Universe completely reimagines the original color for something new.



67.0225, 5.0832, 3.1891



88.2054, 9.4689, 4.1162



71.0459, -8.7548, 0.0414



31.8233, 1.5026, 1.5484



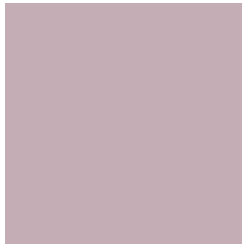
27.8594, 48.5023, 11.8610



5.8984, 10.4760, 0.9068

Previews

White Background



This preview shows how the HunterLab color 67.0210, 5.0851, 3.1880 looks on a white background.

Color Contrast Check

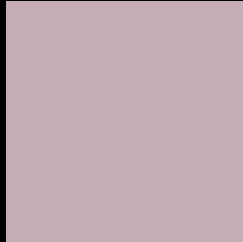
Large Text (above 18pt) WCAG AA × Fail

Any Text WCAG AA × Fail

Large Text (above 18pt) WCAG AAA × Fail

Any Text WCAG AAA × Fail

Black Background



This preview shows how the HunterLab color 67.0210, 5.0851, 3.1880 looks on a black background.

Color Contrast Check

Large Text (above 18pt) WCAG AA ✓ Pass

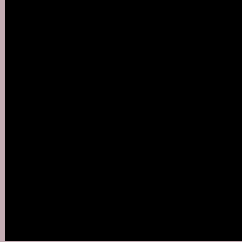
Any Text WCAG AA ✓ Pass

Large Text (above 18pt) WCAG AAA ✓ Pass

Any Text WCAG AAA ✓ Pass

If you want to check with other color combinations, try the [Color Contrast Checker](#).

HunterLab 67.0210, 5.0851, 3.1880 Background



This preview shows how black text looks on a background with the HunterLab color 67.0210, 5.0851, 3.1880.



This preview shows how white text looks on a background with the HunterLab color 67.0210, 5.0851,

3.1880.

Color Blindness Simulation

Color vision deficiency is a very complex topic, and I could not describe the different causes any better than Wikipedia does, so if you want to learn more, you should check out their [article about color blindness](#).

Dichromacy



Original Color

67.0210, 5.0851, 3.1880

Protanopia

67.1442, -1.7965, 1.7832

Deuteranopia

66.9212, 4.7507, 3.0637



Tritanopia

67.0228, 6.9290, 0.3257

Trichromacy



Original Color

67.0210, 5.0851, 3.1880

Protanomaly

66.9830, 0.6159, 2.1122

Deuteranomaly

66.9212, 4.7507, 3.0637

Tritanomaly

66.9597, 6.5933, 1.2225

Monochromacy



Original Color

67.0210, 5.0851, 3.1880

Achromatopsia

67.9762, -3.6270, 3.6933

Achromatomaly

67.5397, -0.5578, 3.2315

CSS Examples

Text

The CSS property to change the color of the text to HunterLab 67.0210, 5.0851, 3.1880 is called "color". The color property can be set on classes, ids or directly on the HTML element.

This example shows how text in the color `rgb(196, 173, 180)` looks like.

```
.text, #text, p{  
    color:rgb(196, 173, 180)  
}
```

If you want to add a text shadow in that color use the text-shadow property, you can generate a text shadow directly with our [CSS Text Shadow Generator](#).

Here you see how black text with a 4 pixel rgb(196, 173, 180) colored shadow looks like.

```
.shadow{ text-shadow: 4px 4px 2px rgb(196, 173, 180) }
```

Border

The CSS property to change the border of an element to HunterLab 67.0210, 5.0851, 3.1880 is called "border". The border property can be set on classes, ids or directly on the HTML element.

This example shows the color as border, it can be applied via the CSS property "border" or "border-color".

```
.border, #border, table{ border:4px solid rgb(196, 173, 180) }
```


If only the border color should be changed use the property border-color.

```
.border{ border-color:rgb(196, 173, 180) }
```

If you want to add a box shadow in that color use:

Here you see how a box with a 4 pixel rgb(196, 173, 180) colored shadow looks like.

```
.boxshadow{ -moz-box-shadow:4px 4px 4px  
4px rgb(196, 173, 180); -webkit-box-  
shadow:4px 4px 4px 4px rgb(196, 173, 180);  
box-shadow:4px 4px 4px 4px rgb(196, 173,  
180) }
```

Background

The CSS property to change the background color of an element to HunterLab 67.0210, 5.0851, 3.1880 is called "background". The background property can be set on classes, ids or directly on the HTML element.

```
.background, #background, body{  
background: rgb(196, 173, 180) }
```

If only the background color should be changed can be used:

```
.background{ background-color: rgb(196,  
173, 180) }
```

This example shows the color as background, it is applied via the CSS property "background".

To optimize and compress your CSS code, you can use our [online CSS compressor and optimizer](#) based on csstidy. If you want to create a linear or radial gradient as background or border, check our [CSS Gradient Generator](#).

Hey! You found this booklet interesting? Support Converting Colors with the new Membership Option!

The pro membership hides all ads, plus gives you double the colors in the color bucket, and more awesome pro features!

[Learn more, Memberships starting at \\$2.50/m!](#)

**Follow me
on Twitter!**

@ConvertingColor