

Converting Colors

HunterLab(67.0674, 7.7429,
6.5116)

Have a look what the booklet for
HunterLab(67.0674, 7.7429, 6.5116)
contains.

| | |
|-------------------------------------------------|----|
| HunterLab(67.0674, 7.7429, 6.5116) | 3 |
| <i>Conversions</i> | 4 |
| <i>Details</i> | 6 |
| <i>Harmonies</i> | 12 |
| <i>Previews</i> | 24 |
| <i>Color Blindness Simulation</i> | 28 |
| <i>CSS Examples</i> | 31 |

Color

**HunterLab(67.0674, 7.7429,
6.5116)**

Conversions

Conversions Part 1

| Format | Color |
|-------------|---------------------------|
| Hex | CCABAD |
| RGB | 204, 171, 173 |
| RGB Percent | 80%, 67%, 68% |
| CMY | 0.2000, 0.3294, 0.3216 |
| CMYK | 0.00, 0.16, 0.15, 0.20 |
| HSL | 356°, 24%, 74% |
| HSV | 356°, 16%, 80% |
| XYZ | 47.0076, 44.9804, 45.7397 |
| YIQ | 181.0950, 19.0260, 7.6180 |

Conversions

Conversions Part 2

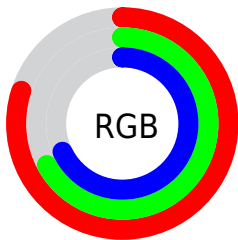
| Format | Color |
|-------------------------------------|-------------------------------|
| R_{YB} | 204, 171, 173 |
| Decimal | 13413293 |
| CIE _{Lab} | 72.88, 12.31, 3.45 |
| CIE _{LCh} | 73, 12.783, 15.675 |
| Yxy | 44.9824, 0.3413, 0.3266 |
| Android (android.graphics.Color) | 4291603373 (0xFFCCABAD) |
| YUV | 181.0950, -3.9908, 20.0877 |
| Hunter-Lab | 67.0674, 7.7429, 6.5116 |

Details

The HunterLab color $67.0674, 7.7429, 6.5116$ is a light color, and the websafe version is hex $CC9999$. A complement of this color would be $74.9060, -14.2001, 1.6778$, and the grayscale version is $68.0278, -3.6298, 3.6961$.

A 20% lighter version of the original color is $90.1411, 5.5031, 7.3630$, and $45.7861, 7.3675, 4.9179$ is the 20% darker color. If you saturate the color by 10%, you get $60.9683, 15.4635, 8.1786$, and if you desaturate by 10%, it is $73.5454, 0.3050, 5.0423$.

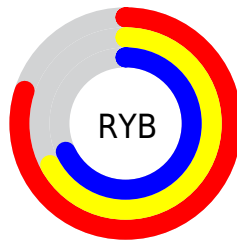
Distribution



Red (80%)

Green (67%)

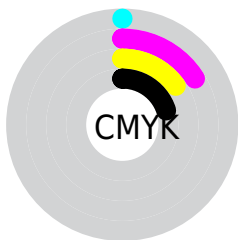
Blue (68%)



Red (80%)

Yellow (67%)

Blue (68%)

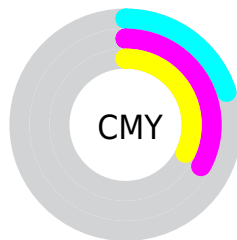


Cyan (0%)

Magenta (16%)

Yellow (15%)

Black (20%)



Cyan (20%)


Magenta (33%)


Yellow (32%)

Brightness & Saturation Gradients


These gradients show how the HunterLab color 67.0674, 7.7429, 6.5116 changes by changing the brightness by 10 percent. The first figure shows a shift by +10% for each color and the second figure -10%.


Similar to the brightness gradients but the following saturation gradients show a change of the HunterLab color 67.0674, 7.7429, 6.5116 by changing the saturation by 10% instead.


 67.0674, 7.7429,
6.5116

 67.0674, 7.7429,
6.5116


191.4947, 5.5800,
14.5303

 56.0745, 7.7151,
5.7407


 90.9362, 7.6024,
8.1308

 45.7568, 7.6163,
4.9936


103.7475, 7.4492,
8.9762

 36.1633, 7.4345,
4.2710

117.1097, 7.2459,
9.8453

 27.3535, 7.1563,
3.5722

131.0008, 6.9958,
10.7376

 19.4047, 6.7628,
2.8944

145.4015, 6.7018,
11.6527

 12.4227, 6.2264,
2.2319

160.2943, 6.3664,

 5.6468, 9.1960,

12.5901

2.8426

175.6635, 5.9918,
13.5495

0.0000, NaN, NaN

0.0000, NaN, NaN

■ 67.0674, 7.7429,
6.5116

■ 67.0674, 7.7429,
6.5116

■ 60.9683, 15.4635,
8.1786

■ 73.5454, 0.3050,
5.0423

■ 55.3148, 23.4427,
10.0567

■ 80.3411, -6.8538,
3.7440

■ 50.1963, 31.5701,
12.1453

■ 87.4114, -13.7631,
2.5936

■ 45.7171, 39.6082,
14.4062

■ 94.7208, -20.4568,
1.5687

■ 41.9911, 47.1394,

■ 95.6961, -20.6483,

16.7413

-0.0097

■ 39.1238, 53.5684,
18.9781

■ 37.1795, 58.2540,
20.8907

■ 36.1334, 60.8112,
22.2686

■ 35.8676, 61.5008,
22.5848

Harmonies

Analogous

The Analogous color harmony consists of three colors that are next to each other on the color wheel.



67.0689, 7.8148, 0.9140



67.0674, 7.7429, 6.5116



67.0689, 4.5637, 10.9489

Triad

The Triadic color harmony groups three colors that are evenly spaced from another and form a triangle on the color wheel.



67.0689, 7.7408, 6.5127



67.0689, -11.5378, 10.7891



67.0689, -6.3773, -7.7192

Complementary

The Complementary color scheme is a pair of colors which are on the opposite of each other on the color wheel.



67.0674, 7.7429, 6.5116



74.9060, -14.2001, 1.6778

Split Complementary

Split-complementary colors differ from the complementary color scheme. The scheme consists of three colors, the original color and two neighbors of the complement color.



67.0689, -11.3570, -4.5726



67.0674, 7.7429, 6.5116



67.0689, -14.2656, 6.2768

Square

The Square scheme is like the rectangle color scheme, but the four colors are evenly spaced on the color wheel.



67.0689, 7.7408, 6.5127



67.0689, -6.6320, 13.2678



67.0689, -14.2006, 0.6568



67.0689, -0.4770, -7.6421

Rectangle

The Rectangle color scheme consists of four colors that form a rectangle on the color wheel.



67.0674, 7.7429, 6.5116



67.0689, 1.1745, 12.7927



67.0689, -14.2006, 0.6568



67.0689, -8.2100, -6.9923

Sweetspot

The Sweet Spot groups the original color and five complimentary colors.



67.0689, 7.7408, 6.5127



95.5958, -0.6464, 6.2933



67.8353, 12.2423, -7.9168



43.9444, 0.0092, 2.9695

0.0000, NaN, NaN



46.2646, -2.4686, 2.5136

Same Dimension

The Same Dimension uses a secret algorithm to generate beautiful new colors.



67.0689, 7.7408, 6.5127



83.8423, 12.9771, 9.0120



71.1357, 0.1381, 11.7215



33.5030, 1.2520, 2.5781



28.4640, 48.8226, 17.7942



6.4955, 11.2017, 3.5920

Inverse Universe

The Inverse Universe completely reimagines the original color for something new.



67.0689, 7.7408, 6.5127



83.8423, 12.9771, 9.0120



70.5098, -6.8291, -4.7086



33.5030, 1.2520, 2.5781



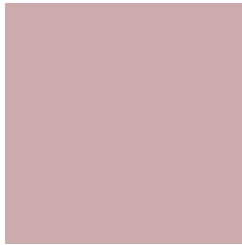
28.4640, 48.8226, 17.7942



6.4955, 11.2017, 3.5920

Previews

White Background



This preview shows how the HunterLab color 67.0674, 7.7429, 6.5116 looks on a white background.

Color Contrast Check

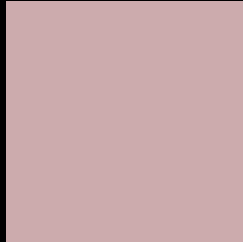
Large Text (above 18pt) WCAG AA × Fail

Any Text WCAG AA × Fail

Large Text (above 18pt) WCAG AAA × Fail

Any Text WCAG AAA × Fail

Black Background



This preview shows how the HunterLab color 67.0674, 7.7429, 6.5116 looks on a black background.

Color Contrast Check

Large Text (above 18pt) WCAG AA ✓ Pass

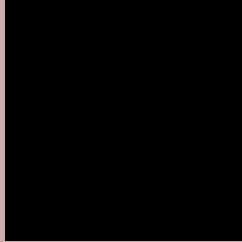
Any Text WCAG AA ✓ Pass

Large Text (above 18pt) WCAG AAA ✓ Pass

Any Text WCAG AAA ✓ Pass

If you want to check with other color combinations, try the [Color Contrast Checker](#).

HunterLab 67.0674, 7.7429, 6.5116 Background



This preview shows how black text looks on a background with the HunterLab color 67.0674, 7.7429, 6.5116.



This preview shows how white text looks on a background with the HunterLab color 67.0674, 7.7429,

Color Blindness Simulation

Color vision deficiency is a very complex topic, and I could not describe the different causes any better than Wikipedia does, so if you want to learn more, you should check out their [article about color blindness](#).

Dichromacy



Original Color

67.0674, 7.7429, 6.5116

Protanopia

67.1434, -2.1634, 4.6058

Deuteranopia

67.1166, 4.9905, 6.5194



Tritanopia

66.9134, 10.7132, 1.7235

Trichromacy



Original Color

67.0674, 7.7429, 6.5116

Protanomaly

66.9857, 1.7620, 4.9517

Deuteranomaly

67.0371, 6.1887, 6.4499

Tritanomaly

67.0696, 9.5465, 3.7941

Monochromacy



Original Color

67.0674, 7.7429, 6.5116

Achromatopsia

67.9762, -3.6270, 3.6933

Achromatomaly

67.4370, 0.4197, 4.5306

CSS Examples

Text

The CSS property to change the color of the text to HunterLab 67.0674, 7.7429, 6.5116 is called "color". The color property can be set on classes, ids or directly on the HTML element.

This example shows how text in the color `rgb(204, 171, 173)` looks like.

```
.text, #text, p{  
    color:rgb(204, 171, 173)  
}
```

If you want to add a text shadow in that color use the text-shadow property, you can generate a text shadow directly with our [CSS Text Shadow Generator](#).

Here you see how black text with a 4 pixel rgb(204, 171, 173) colored shadow looks like.

```
.shadow{ text-shadow: 4px 4px 2px rgb(204, 171, 173) }
```

Border

The CSS property to change the border of an element to HunterLab 67.0674, 7.7429, 6.5116 is called "border". The border property can be set on classes, ids or directly on the HTML element.

This example shows the color as border, it can be applied via the CSS property "border" or "border-color".

```
.border, #border, table{ border:4px solid rgb(204, 171, 173) }
```


If only the border color should be changed use the property `border-color`.

```
.border{ border-color:rgb(204, 171, 173) }
```

If you want to add a box shadow in that color use:

Here you see how a box with a 4 pixel `rgb(204, 171, 173)` colored shadow looks like.

```
.boxshadow{ -moz-box-shadow:4px 4px 4px  
4px rgb(204, 171, 173); -webkit-box-  
shadow:4px 4px 4px 4px rgb(204, 171, 173);  
box-shadow:4px 4px 4px 4px rgb(204, 171,  
173) }
```

Background

The CSS property to change the background color of an element to HunterLab 67.0674, 7.7429, 6.5116 is called "background". The background property can be set on classes, ids or directly on the HTML element.

```
.background, #background, body{  
background: rgb(204, 171, 173) }
```

If only the background color should be changed can be used:

```
.background{ background-color: rgb(204,  
171, 173) }
```

This example shows the color as background, it is applied via the CSS property "background".

To optimize and compress your CSS code, you can use our [online CSS compressor and optimizer](#) based on csstidy. If you want to create a linear or radial gradient as background or border, check our [CSS Gradient Generator](#).

Hey! You found this booklet interesting? Support Converting Colors with the new Membership Option!

The pro membership hides all ads, plus gives you double the colors in the color bucket, and more awesome pro features!

[Learn more, Memberships starting at \\$2.50/m!](#)

**Follow me
on Twitter!**

@ConvertingColor