

Converting Colors

HunterLab(67.1007, 3.4627,
6.4746)

Have a look what the booklet for
HunterLab(67.1007, 3.4627, 6.4746)
contains.

HunterLab(67.1007, 3.4627, 6.4746)	3
<i>Conversions</i>	4
<i>Details</i>	6
<i>Harmonies</i>	12
<i>Previews</i>	24
<i>Color Blindness Simulation</i>	28
<i>CSS Examples</i>	31

Color

**HunterLab(67.1007, 3.4627,
6.4746)**

Conversions

Conversions Part 1

Format	Color
Hex	C4AEAD
RGB	196, 174, 173
RGB Percent	77%, 68%, 68%
CMY	0.2314, 0.3176, 0.3216
CMYK	0.00, 0.11, 0.12, 0.23
HSL	3°, 16%, 72%
HSV	3°, 12%, 77%
XYZ	45.4439, 45.0250, 45.8307
YIQ	180.4640, 13.4330, 4.3530

Conversions

Conversions Part 2

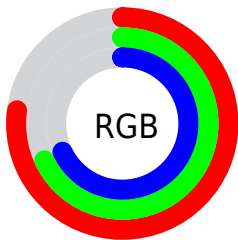
Format	Color
R _Y B	196, 174, 173
Decimal	12889773
CIE Lab	72.91, 7.75, 3.41
CIE LCh	73, 8.462, 23.727
Yxy	45.0270, 0.3334, 0.3303
Android (android.graphics.Color)	4291079853 (0xFFC4AEAD)
YUV	180.4640, -3.6798, 13.6251
Hunter-Lab	67.1007, 3.4627, 6.4746

Details

The HunterLab color **67.1007, 3.4627, 6.4746** is a light color, and the websafe version is hex **CCCCCC**, and the color name is **silver pink**. A complement of this color would be **72.0409, -10.3299, 1.2290**, and the grayscale version is **67.7644, -3.6157, 3.6818**.

A 20% lighter version of the original color is **90.8420, 3.1956, 8.1271**, and **45.8806, 3.6123, 4.9587** is the 20% darker color. If you saturate the color by 10%, you get **61.3012, 10.1078, 8.6339**, and if you desaturate by 10%, it is **73.2105, -2.8909, 4.3909**.

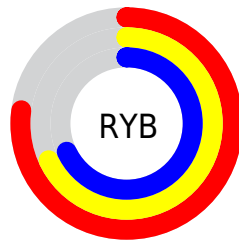
Distribution



Red (77%)

Green (68%)

Blue (68%)



Red (77%)

Yellow (68%)

Blue (68%)

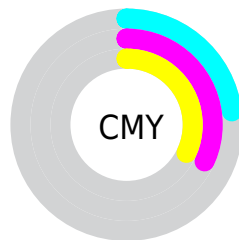


Cyan (0%)

Magenta (11%)

Yellow (12%)

Black (23%)



Cyan (23%)

Magenta (32%)

Yellow (32%)

Brightness & Saturation Gradients

These gradients show how the HunterLab color 67.1007, 3.4627, 6.4746 changes by changing the brightness by 10 percent. The first figure shows a shift by +10% for each color and the second figure -10%.

Similar to the brightness gradients but the following saturation gradients show a change of the HunterLab color 67.1007, 3.4627, 6.4746 by changing the saturation by 10% instead.

■ 67.1007, 3.4627,
6.4746

■ 67.1007, 3.4627,
6.4746

191.5419, -0.3378,
14.4761

■ 56.1059, 3.6570,
5.7061

■ 90.9731, 2.9093,
8.0893

■ 45.7861, 3.7927,
4.9616

103.7860, 2.5625,
8.9327

■ 36.1904, 3.8602,
4.2419

117.1498, 2.1729,
9.7998

■ 27.3782, 3.8490,
3.5461

131.0424, 1.7430,
10.6903

■ 19.4267, 3.7440,
2.8719

145.4446, 1.2751,
11.6036

■ 12.4417, 3.5223,
2.2135

160.3388, 0.7712,

■ 5.6756, 5.6448,

12.5393

2.7959

175.7094, 0.2331,
13.4969

0.0000, NaN, NaN

0.0000, NaN, NaN

■ 67.1007, 3.4627,
6.4746

■ 67.1007, 3.4627,
6.4746

■ 61.3012, 10.1078,
8.6339

■ 73.2105, -2.8909,
4.3909

■ 55.8617, 17.0564,
10.8591

■ 79.5828, -8.9734,
2.3774

■ 50.8510, 24.2704,
13.1275

■ 86.1846, -14.8197,
0.4285

■ 46.3502, 31.6361,
15.3870

■ 92.9881, -20.4638,
-1.4637

■ 42.4528, 38.9161,

■ 95.1188, -22.7569,

17.5436

-0.7581

■ 39.2563, 45.7138,
19.4545

■ 36.8438, 51.4924,
20.9441

■ 35.2549, 55.7068,
21.8614

■ 34.5276, 57.7476,
22.2867

Harmonies

Analogous

The Analogous color harmony consists of three colors that are next to each other on the color wheel.



67.1022, 4.0783, 2.8639



67.1007, 3.4627, 6.4746



67.1022, 0.9365, 9.1829

Triad

The Triadic color harmony groups three colors that are evenly spaced from another and form a triangle on the color wheel.



67.1022, 3.4607, 6.4757



67.1022, -9.5566, 7.7599



67.1022, -4.4060, -3.8772

Complementary

The Complementary color scheme is a pair of colors which are on the opposite of each other on the color wheel.



67.1007, 3.4627, 6.4746



72.0409, -10.3299, 1.2290

Split Complementary

Split-complementary colors differ from the complementary color scheme. The scheme consists of three colors, the original color and two neighbors of the complement color.



67.1022, -7.9879, -2.3926



67.1007, 3.4627, 6.4746



67.1022, -10.9172, 4.4317

Square

The Square scheme is like the rectangle color scheme, but the four colors are evenly spaced on the color wheel.



67.1022, 3.4607, 6.4757



67.1022, -6.5918, 9.8940



67.1022, -10.3496, 0.7012



67.1022, -0.5223, -3.2528

Rectangle

The Rectangle color scheme consists of four colors that form a rectangle on the color wheel.



67.1007, 3.4627, 6.4746



67.1022, -1.4576, 10.1809



67.1022, -10.3496, 0.7012



67.1022, -5.6842, -3.6057

Sweetspot

The Sweet Spot groups the original color and five complimentary colors.



67.1022, 3.4607, 6.4757



96.5886, -1.9345, 6.5544



67.5087, 7.6817, -3.7333



44.3926, -0.5959, 3.1308

0.0000, NaN, NaN



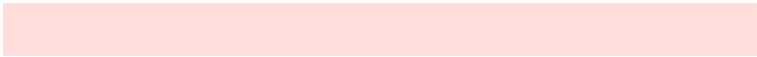
46.2646, -2.4686, 2.5136

Same Dimension

The Same Dimension uses a secret algorithm to generate beautiful new colors.



67.1022, 3.4607, 6.4757



88.3335, 6.8432, 9.4286



70.4011, -2.2265, 10.0458



31.8540, 0.8958, 2.7771



27.7361, 46.0889, 17.8977



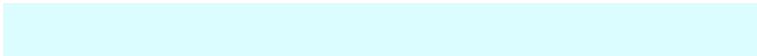
5.9767, 8.8851, 3.8384

Inverse Universe

The Inverse Universe completely reimagines the original color for something new.



72.0409, -10.3299, 1.2290



96.3622, -15.5919, 0.8945



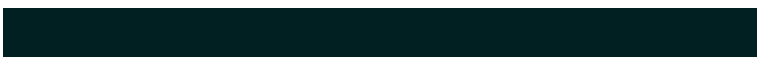
68.5862, -4.7762, -2.9676



33.6907, -4.2302, 0.8266



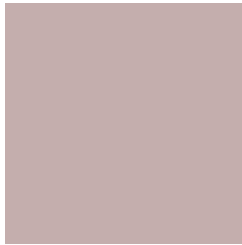
50.5504, -25.2614, -8.6515



10.6197, -5.3867, -1.6453

Previews

White Background



This preview shows how the HunterLab color 67.1007, 3.4627, 6.4746 looks on a white background.

Color Contrast Check

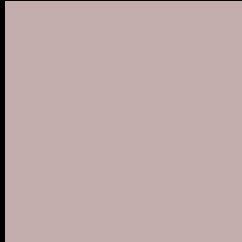
Large Text (above 18pt) WCAG AA × Fail

Any Text WCAG AA × Fail

Large Text (above 18pt) WCAG AAA × Fail

Any Text WCAG AAA × Fail

Black Background



This preview shows how the HunterLab color 67.1007, 3.4627, 6.4746 looks on a black background.

Color Contrast Check

Large Text (above 18pt) WCAG AA ✓ Pass

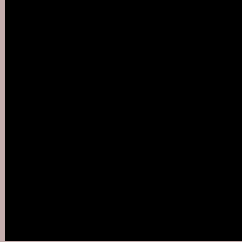
Any Text WCAG AA ✓ Pass

Large Text (above 18pt) WCAG AAA ✓ Pass

Any Text WCAG AAA ✓ Pass

If you want to check with other color combinations, try the [Color Contrast Checker](#).

HunterLab 67.1007, 3.4627, 6.4746 Background



This preview shows how black text looks on a background with the HunterLab color 67.1007, 3.4627, 6.4746.



This preview shows how white text looks on a background with the HunterLab color 67.1007, 3.4627,

6.4746.

Color Blindness Simulation

Color vision deficiency is a very complex topic, and I could not describe the different causes any better than Wikipedia does, so if you want to learn more, you should check out their [article about color blindness](#).

Dichromacy



Original Color

67.1007, 3.4627, 6.4746

Protanopia

67.0844, -2.4855, 5.4485

Deuteranopia

67.0150, 4.6497, 6.3978



Tritanopia

67.1238, 7.2641, 0.4557

Trichromacy



Original Color

67.1007, 3.4627, 6.4746

Protanomaly

67.2247, -0.5427, 6.0962

Deuteranomaly

66.9138, 4.3101, 6.2767

Tritanomaly

67.1518, 5.5836, 2.8784

Monochromacy



Original Color

67.1007, 3.4627, 6.4746

Achromatopsia

67.5582, -3.6047, 3.6706

Achromatomaly

67.4197, -1.2101, 4.9433

CSS Examples

Text

The CSS property to change the color of the text to HunterLab 67.1007, 3.4627, 6.4746 is called "color". The color property can be set on classes, ids or directly on the HTML element.

This example shows how text in the color `rgb(196, 174, 173)` looks like.

```
.text, #text, p{  
    color:rgb(196, 174, 173)  
}
```

If you want to add a text shadow in that color use the text-shadow property, you can generate a text shadow directly with our [CSS Text Shadow Generator](#).

Here you see how black text with a 4 pixel rgb(196, 174, 173) colored shadow looks like.

```
.shadow{ text-shadow: 4px 4px 2px rgb(196, 174, 173) }
```

Border

The CSS property to change the border of an element to HunterLab 67.1007, 3.4627, 6.4746 is called "border". The border property can be set on classes, ids or directly on the HTML element.

This example shows the color as border, it can be applied via the CSS property "border" or "border-color".

```
.border, #border, table{ border:4px solid rgb(196, 174, 173) }
```


If only the border color should be changed use the property `border-color`.

```
.border{ border-color:rgb(196, 174, 173) }
```

If you want to add a box shadow in that color use:

Here you see how a box with a 4 pixel `rgb(196, 174, 173)` colored shadow looks like.

```
.boxshadow{ -moz-box-shadow:4px 4px 4px  
4px rgb(196, 174, 173); -webkit-box-  
shadow:4px 4px 4px 4px rgb(196, 174, 173);  
box-shadow:4px 4px 4px 4px rgb(196, 174,  
173) }
```

Background

The CSS property to change the background color of an element to HunterLab 67.1007, 3.4627, 6.4746 is called "background". The background property can be set on classes, ids or directly on the HTML element.

```
.background, #background, body{  
background: rgb(196, 174, 173) }
```

If only the background color should be changed can be used:

```
.background{ background-color: rgb(196,  
174, 173) }
```

This example shows the color as background, it is applied via the CSS property "background".

To optimize and compress your CSS code, you can use our [online CSS compressor and optimizer](#) based on csstidy. If you want to create a linear or radial gradient as background or border, check our [CSS Gradient Generator](#).

Hey! You found this booklet interesting? Support Converting Colors with the new Membership Option!

The pro membership hides all ads, plus gives you double the colors in the color bucket, and more awesome pro features!

[Learn more, Memberships starting at \\$2.50/m!](#)

**Follow me
on Twitter!**

@ConvertingColor