

Converting Colors

HunterLab(67.1398, 8.5903,
7.4695)

Have a look what the booklet for
HunterLab(67.1398, 8.5903, 7.4695)
contains.

HunterLab(67.3287, 8.4919, 7.7082)	3
<i>Conversions</i>	4
<i>Details</i>	6
<i>Harmonies</i>	12
<i>Previews</i>	24
<i>Color Blindness Simulation</i>	28
<i>CSS Examples</i>	31

Color

**HunterLab(67.3287, 8.4919,
7.7082)**

Conversions

Conversions Part 1

Format	Color
Hex	CFABAB
RGB	207, 171, 171
RGB Percent	81%, 67%, 67%
CMY	0.1882, 0.3294, 0.3294
CMYK	0.00, 0.17, 0.17, 0.19
HSL	0°, 27%, 74%
HSV	0°, 17%, 81%
XYZ	47.6458, 45.3315, 44.7668
YIQ	181.7640, 21.4560, 7.6320

Conversions

Conversions Part 2

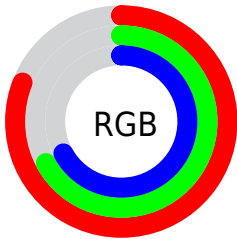
Format	Color
R _Y B	207, 171, 171
Decimal	13609899
CIE Lab	73.11, 13.09, 4.92
CIE LCh	73, 13.989, 20.597
Yxy	45.3336, 0.3459, 0.3291
Android (android.graphics.Color)	4291799979 (0xFFCFABAB)
YUV	181.7640, -5.3067, 22.1320
Hunter-Lab	67.3287, 8.4919, 7.7082

Details

The HunterLab color $67.3287, 8.4919, 7.7082$ is a light color, and the websafe version is hex $CC9999$. A complement of this color would be $76.0179, -14.7572, 0.5418$, and the grayscale version is $68.3124, -3.6450, 3.7115$.

A 20% lighter version of the original color is $90.0798, 5.1742, 8.2393$, and $46.0445, 8.1032, 6.0409$ is the 20% darker color. If you saturate the color by 10%, you get $61.1458, 16.2371, 9.8601$, and if you desaturate by 10%, it is $73.9101, 1.0681, 5.6962$.

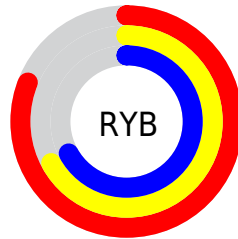
Distribution



Red (81%)

Green (67%)

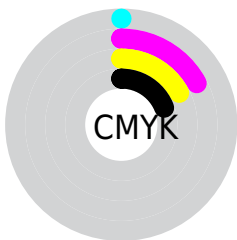
Blue (67%)



Red (81%)

Yellow (67%)

Blue (67%)

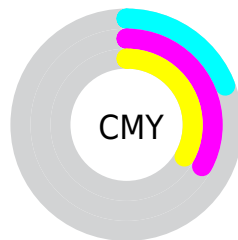


Cyan (0%)

Magenta (17%)

Yellow (17%)

Black (19%)



Cyan (19%)


Magenta (33%)

Yellow (33%)

Brightness & Saturation Gradients


These gradients show how the HunterLab color 67.3287, 8.4919, 7.7082 changes by changing the brightness by 10 percent. The first figure shows a shift by +10% for each color and the second figure -10%.


Similar to the brightness gradients but the following saturation gradients show a change of the HunterLab color 67.3287, 8.4919, 7.7082 by changing the saturation by 10% instead.


 67.3287, 8.4919,
7.7082

 67.3287, 8.4919,
7.7082


191.8653, 6.5983,
16.2714

 56.3207, 8.4280,
6.8608


 91.2254, 8.4187,
9.4675

 45.9869, 8.2915,
6.0316

104.0497, 8.2973,
10.3778

 36.3761, 8.0699,
5.2202


117.4243, 8.1246,
11.3089

 27.5474, 7.7495,
4.4235


131.3274, 7.9040,
12.2607

 19.5777, 7.3111,
3.6357

145.7396, 7.6387,
13.2331

 12.5718, 6.7272,
2.8452

160.6436, 7.3312,

 5.8686, 9.4094,

14.2258

3.7954

176.0236, 6.9837,
15.2387

0.0000, NaN, NaN

0.0000, NaN, NaN

■ 67.3287, 8.4919,
7.7082

■ 67.3287, 8.4919,
7.7082

■ 61.1458, 16.2371,
9.8601

■ 73.9101, 1.0681,
5.6962

■ 55.4329, 24.2799,
12.1437

■ 80.8251, -6.0412,
3.8117

■ 50.2851, 32.5031,
14.5284

■ 88.0274, -12.8707,
2.0418

■ 45.8126, 40.6499,
16.9360

■ 95.4794, -19.4587,
0.3707

■ 42.1339, 48.2701,

■ 95.9195, -19.8360,

19.2240

0.2787

■ 39.3543, 54.7311,
21.1881

■ 37.5295, 59.3747,
22.6117

■ 36.5992, 61.8831,
23.3844

■ 36.4225, 62.3713,
23.5353

Harmonies

Analogous

The Analogous color harmony consists of three colors that are next to each other on the color wheel.



67.3302, 9.1647, 1.6962



67.3287, 8.4919, 7.7082



67.3302, 4.5109, 12.2087

Triad

The Triadic color harmony groups three colors that are evenly spaced from another and form a triangle on the color wheel.



67.3302, 8.4897, 7.7093



67.3302, -12.9713, 10.7742



67.3302, -5.6232, -9.1318

Complementary

The Complementary color scheme is a pair of colors which are on the opposite of each other on the color wheel.



67.3287, 8.4919, 7.7082



76.0179, -14.7572, 0.5418

Split Complementary

Split-complementary colors differ from the complementary color scheme. The scheme consists of three colors, the original color and two neighbors of the complement color.



67.3302, -11.3369, -6.1696



67.3287, 8.4919, 7.7082



67.3302, -15.4722, 5.5760

Square

The Square scheme is like the rectangle color scheme, but the four colors are evenly spaced on the color wheel.



67.3302, 8.4897, 7.7093



67.3302, -7.9308, 13.8584



67.3302, -14.8855, -0.6470



67.3302, 0.8510, -8.4229

Rectangle

The Rectangle color scheme consists of four colors that form a rectangle on the color wheel.



67.3287, 8.4919, 7.7082



67.3302, 0.6005, 13.9292



67.3302, -14.8855, -0.6470



67.3302, -7.6925, -8.5226

Sweetspot

The Sweet Spot groups the original color and five complimentary colors.



67.3302, 8.4897, 7.7093



95.5719, -0.7793, 6.6412



68.4813, 14.5464, -8.6564



43.9318, -0.0606, 3.1526

0.0000, NaN, NaN



46.2646, -2.4686, 2.5136

Same Dimension

The Same Dimension uses a secret algorithm to generate beautiful new colors.



67.3302, 8.4897, 7.7093



82.1488, 14.4879, 10.7906



72.5269, -0.7115, 13.1813



34.3634, 1.2050, 2.8859



28.9105, 49.5067, 18.6812



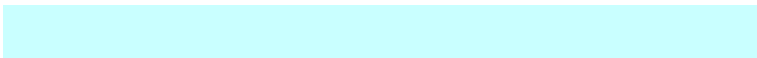
6.8367, 11.7046, 4.4177

Inverse Universe

The Inverse Universe completely reimagines the original color for something new.



76.0179, -14.7572, 0.5418



95.5073, -21.3269, -0.2538



70.3980, -5.9123, -6.4420



36.6154, -4.8053, 1.0332



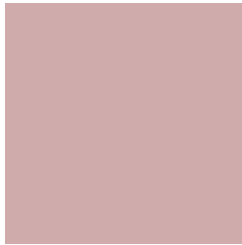
55.6309, -29.4890, -5.8755



13.1548, -6.9733, -1.3890

Previews

White Background



This preview shows how the HunterLab color 67.3287, 8.4919, 7.7082 looks on a white background.

Color Contrast Check

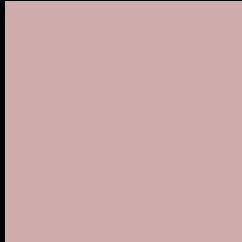
Large Text (above 18pt) WCAG AA × Fail

Any Text WCAG AA × Fail

Large Text (above 18pt) WCAG AAA × Fail

Any Text WCAG AAA × Fail

Black Background



This preview shows how the HunterLab color 67.3287, 8.4919, 7.7082 looks on a black background.

Color Contrast Check

Large Text (above 18pt) WCAG AA ✓ Pass

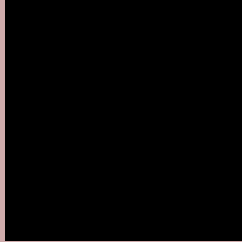
Any Text WCAG AA ✓ Pass

Large Text (above 18pt) WCAG AAA ✓ Pass

Any Text WCAG AAA ✓ Pass

If you want to check with other color combinations, try the [Color Contrast Checker](#).

HunterLab 67.3287, 8.4919, 7.7082 Background



This preview shows how black text looks on a background with the HunterLab color 67.3287, 8.4919, 7.7082.



This preview shows how white text looks on a background with the HunterLab color 67.3287, 8.4919,

7.7082.

Color Blindness Simulation

Color vision deficiency is a very complex topic, and I could not describe the different causes any better than Wikipedia does, so if you want to learn more, you should check out their [article about color blindness](#).

Dichromacy



Original Color

67.3287, 8.4919, 7.7082

Protanopia

67.4727, -2.6664, 5.8908

Deuteranopia

67.4476, 4.5160, 7.7717



Tritanopia

67.2036, 11.5971, 2.5690

Trichromacy



Original Color

67.3287, 8.4919, 7.7082

Protanomaly

67.3150, 1.2699, 6.2310

Deuteranomaly

67.4714, 6.0625, 7.8255

Tritanomaly

67.3600, 10.4381, 4.6163

Monochromacy



Original Color

67.3287, 8.4919, 7.7082

Achromatopsia

68.3947, -3.6494, 3.7160

Achromatomaly

67.9202, 0.5655, 5.0944

CSS Examples

Text

The CSS property to change the color of the text to HunterLab 67.3287, 8.4919, 7.7082 is called "color". The color property can be set on classes, ids or directly on the HTML element.

This example shows how text in the color `rgb(207, 171, 171)` looks like.

```
.text, #text, p{  
    color:rgb(207, 171, 171)  
}
```

If you want to add a text shadow in that color use the text-shadow property, you can generate a text shadow directly with our [CSS Text Shadow Generator](#).

Here you see how black text with a 4 pixel rgb(207, 171, 171) colored shadow looks like.

```
.shadow{ text-shadow: 4px 4px 2px rgb(207, 171, 171) }
```

Border

The CSS property to change the border of an element to HunterLab 67.3287, 8.4919, 7.7082 is called "border". The border property can be set on classes, ids or directly on the HTML element.

This example shows the color as border, it can be applied via the CSS property "border" or "border-color".

```
.border, #border, table{ border:4px solid rgb(207, 171, 171) }
```


If only the border color should be changed use the property `border-color`.

```
.border{ border-color:rgb(207, 171, 171) }
```

If you want to add a box shadow in that color use:

Here you see how a box with a 4 pixel `rgb(207, 171, 171)` colored shadow looks like.

```
.boxshadow{ -moz-box-shadow:4px 4px 4px  
4px rgb(207, 171, 171); -webkit-box-  
shadow:4px 4px 4px 4px rgb(207, 171, 171);  
box-shadow:4px 4px 4px 4px rgb(207, 171,  
171) }
```

Background

The CSS property to change the background color of an element to HunterLab 67.3287, 8.4919, 7.7082 is called "background". The background property can be set on classes, ids or directly on the HTML element.

```
.background, #background, body{  
background: rgb(207, 171, 171) }
```

If only the background color should be changed can be used:

```
.background{ background-color: rgb(207,  
171, 171) }
```

This example shows the color as background, it is applied via the CSS property "background".

To optimize and compress your CSS code, you can use our [online CSS compressor and optimizer](#) based on csstidy. If you want to create a linear or radial gradient as background or border, check our [CSS Gradient Generator](#).

Hey! You found this booklet interesting? Support Converting Colors with the new Membership Option!

The pro membership hides all ads, plus gives you double the colors in the color bucket, and more awesome pro features!

[Learn more, Memberships starting at \\$2.50/m!](#)

**Follow me
on Twitter!**

@ConvertingColor