

Converting Colors

HunterLab(67.1571, -0.7750,
17.7183)

Have a look what the booklet for
HunterLab(67.1571, -0.7750,
17.7183) contains.

HunterLab(67.1571, -0.7750, 17.7183)	3
<i>Conversions</i>	4
<i>Details</i>	6
<i>Harmonies</i>	12
<i>Previews</i>	24
<i>Color Blindness Simulation</i>	28
<i>CSS Examples</i>	31

Color

**HunterLab(67.1571, -0.7750,
17.7183)**

Conversions

Conversions Part 1

Format	Color
Hex	C6B091
RGB	198, 176, 145
RGB Percent	78%, 69%, 57%
CMY	0.2235, 0.3098, 0.4314
CMYK	0.00, 0.11, 0.27, 0.22
HSL	35°, 32%, 67%
HSV	35°, 27%, 78%
XYZ	43.9249, 45.1008, 33.1783
YIQ	179.0440, 23.0630, -4.9770

Conversions

Conversions Part 2

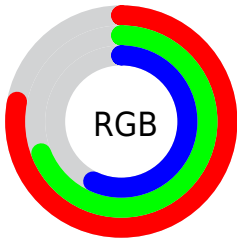
Format	Color
R_{YB}	183, 198, 145
Decimal	13021329
CIE _{Lab}	72.96, 3.13, 18.79
CIE _{LCh}	73, 19.051, 80.555
Yxy	45.1028, 0.3594, 0.3691
Android (android.graphics.Color)	4291211409 (0xFFC6B091)
YUV	179.0440, -16.7837, 16.6244
Hunter-Lab	67.1571, -0.7750, 17.7183

Details

The HunterLab color $67.1571, -0.7750, 17.7183$ is a light color, and the websafe version is hex `CCCC99`. A complement of this color would be $61.4275, -3.7921, -13.7822$, and the grayscale version is $67.2212, -3.5868, 3.6523$.

A 20% lighter version of the original color is $91.1574, -2.0795, 20.9907$, and $45.8945, -0.3670, 14.5930$ is the 20% darker color. If you saturate the color by 10%, you get $64.3573, 0.9995, 21.7375$, and if you desaturate by 10%, it is $70.0633, -2.2347, 13.0899$.

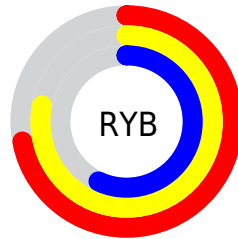
Distribution



Red (78%)

Green (69%)

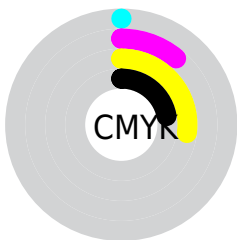
Blue (57%)



Red (72%)

Yellow (78%)

Blue (57%)

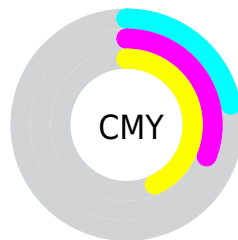


Cyan (0%)

Magenta (11%)

Yellow (27%)

Black (22%)



Cyan (22%)

Magenta (31%)

Yellow (43%)

Brightness & Saturation Gradients

These gradients show how the HunterLab color 67.1571, -0.7750, 17.7183 changes by changing the brightness by 10 percent. The first figure shows a shift by +10% for each color and the second figure -10%.

Similar to the brightness gradients but the following saturation gradients show a change of the HunterLab color 67.1571, -0.7750, 17.7183 by changing the saturation by 10% instead.

■ 67.1571, -0.7750,
17.7183

■ 67.1571, -0.7750,
17.7183

191.6220, -6.2657,
31.6851

■ 56.1591, -0.3496,
16.0937

■ 91.0355, -1.7573,
20.8869

■ 45.8358, 0.0316,
14.4252

■ 103.8513, -2.3042,
22.4446

■ 36.2363, 0.3615,
12.6957

117.2177, -2.8862,
23.9921

■ 27.4201, 0.6338,
10.8784

131.1129, -3.5014,
25.5331

■ 19.4641, 0.8393,
8.9304

145.5176, -4.1482,
27.0707

■ 12.4739, 0.9641,
7.5516

160.4142, -4.8253,

■ 5.7240, 2.0743,

28.6073

4.0068

175.7871, -5.5315,
30.1449

0.0000, NaN, NaN

0.0000, NaN, NaN

■ 67.1571, -0.7750,
17.7183

■ 67.1571, -0.7750,
17.7183

■ 64.3573, 0.9995,
21.7375

■ 70.0633, -2.2347,
13.0899

■ 61.6660, 3.1100,
25.0988

■ 73.0646, -3.3900,
7.8956

■ 59.0917, 5.5652,
27.7601

■ 76.1566, -4.2615,
2.1811

■ 56.6415, 8.3691,
29.6855

■ 79.3333, -4.8677,
-4.0117

■ 54.3215, 11.5169,

■ 82.5896, -5.2268,

30.8529

-10.6436

■ 52.1373, 14.9899,
31.2643

■ 85.5823, -7.2159,
-12.9336

■ 50.0909, 18.7456,
30.9764

■ 88.2054, -11.4330,
-9.4419

■ 49.4538, 19.9854,
30.8231

■ 90.8721, -15.6037,
-6.0056

■ 93.5802, -19.7294,
-2.6227

Harmonies

Analogous

The Analogous color harmony consists of three colors that are next to each other on the color wheel.



67.1586, 7.5472, 14.9730



67.1571, -0.7750, 17.7183



67.1586, -9.4464, 17.0915

Triad

The Triadic color harmony groups three colors that are evenly spaced from another and form a triangle on the color wheel.



67.1586, -0.7772, 17.7192



67.1586, -18.7606, -2.2675



67.1586, 10.0374, -7.4399

Complementary

The Complementary color scheme is a pair of colors which are on the opposite of each other on the color wheel.



67.1571, -0.7750, 17.7183



61.4275, -3.7921, -13.7822

Split Complementary

Split-complementary colors differ from the complementary color scheme. The scheme consists of three colors, the original color and two neighbors of the complement color.



67.1586, 2.4804, -13.2989



67.1571, -0.7750, 17.7183



67.1586, -14.0400, -10.0551

Square

The Square scheme is like the rectangle color scheme, but the four colors are evenly spaced on the color wheel.



67.1586, -0.7772, 17.7192



67.1586, -19.5321, 6.2532



67.1586, -6.3514, -14.3132



67.1586, 14.0002, 0.9500

Rectangle

The Rectangle color scheme consists of four colors that form a rectangle on the color wheel.



67.1571, -0.7750, 17.7183



67.1586, -14.2761, 14.8084



67.1586, -6.3514, -14.3132



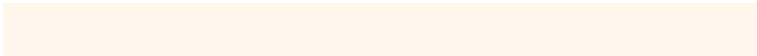
67.1586, 7.8154, -9.8139

Sweetspot

The Sweet Spot groups the original color and five complimentary colors.



67.1586, -0.7772, 17.7192



96.6808, -4.3258, 11.4839



59.2032, 18.1936, 0.1455



44.4443, -1.9006, 5.8160

0.0000, NaN, NaN



46.2646, -2.4686, 2.5136

Same Dimension

The Same Dimension uses a secret algorithm to generate beautiful new colors.



67.1586, -0.7772, 17.7192



87.2220, 0.2632, 26.7378



73.3805, -13.0010, 23.3443



34.1329, -1.4716, 4.3959



40.0961, 15.6622, 24.9812



9.4962, 1.8624, 5.8841

Inverse Universe

The Inverse Universe completely reimagines the original color for something new.



61.4275, -3.7921, -13.7822



78.0411, -4.4845, -23.8661



55.4594, 8.4815, -22.7940



33.1641, -1.9950, -0.9052



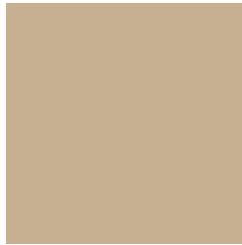
25.9870, 14.1419, -63.0097



6.7972, 0.7654, -10.1482

Previews

White Background



This preview shows how the HunterLab color 67.1571, -0.7750, 17.7183 looks on a white background.

Color Contrast Check

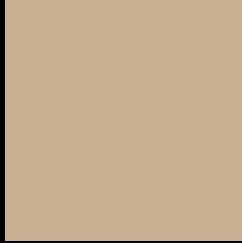
Large Text (above 18pt) WCAG AA × Fail

Any Text WCAG AA × Fail

Large Text (above 18pt) WCAG AAA × Fail

Any Text WCAG AAA × Fail

Black Background



This preview shows how the HunterLab color 67.1571, -0.7750, 17.7183 looks on a black background.

Color Contrast Check

Large Text (above 18pt) WCAG AA ✓ Pass

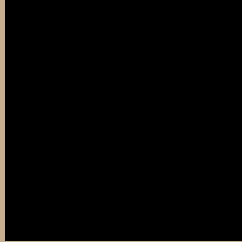
Any Text WCAG AA ✓ Pass

Large Text (above 18pt) WCAG AAA ✓ Pass

Any Text WCAG AAA ✓ Pass

If you want to check with other color combinations, try the [Color Contrast Checker](#).

HunterLab 67.1571, -0.7750, 17.7183 Background



This preview shows how black text looks on a background with the HunterLab color 67.1571, -0.7750, 17.7183.



This preview shows how white text looks on a background with the HunterLab color 67.1571, -0.7750,

Color Blindness Simulation

Color vision deficiency is a very complex topic, and I could not describe the different causes any better than Wikipedia does, so if you want to learn more, you should check out their [article about color blindness](#).

Dichromacy



Original Color

67.1571, -0.7750, 17.7183

Protanopia

67.2775, -4.8595, 17.4055

Deuteranopia

67.0748, 4.9103, 17.3792



Tritanopia

67.2927, 9.1465, 1.6710

Trichromacy



Original Color

67.1571, -0.7750, 17.7183

Protanomaly

67.2708, -3.3572, 17.4253

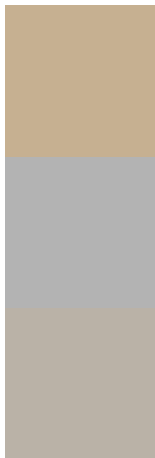
Deuteranomaly

66.9327, 2.9664, 17.2066

Tritanomaly

67.2361, 5.2198, 7.9862

Monochromacy



Original Color

67.1571, -0.7750, 17.7183

Achromatopsia

67.1406, -3.5825, 3.6479

Achromatomaly

67.1341, -2.7680, 9.0317

CSS Examples

Text

The CSS property to change the color of the text to HunterLab 67.1571, -0.7750, 17.7183 is called "color". The color property can be set on classes, ids or directly on the HTML element.

This example shows how text in the color `rgb(198, 176, 145)` looks like.

```
.text, #text, p{  
    color:rgb(198, 176, 145)  
}
```

If you want to add a text shadow in that color use the text-shadow property, you can generate a text shadow directly with our [CSS Text Shadow Generator](#).

Here you see how black text with a 4 pixel rgb(198, 176, 145) colored shadow looks like.

```
.shadow{ text-shadow: 4px 4px 2px rgb(198, 176, 145) }
```

Border

The CSS property to change the border of an element to HunterLab 67.1571, -0.7750, 17.7183 is called "border". The border property can be set on classes, ids or directly on the HTML element.

This example shows the color as border, it can be applied via the CSS property "border" or "border-color".

```
.border, #border, table{ border:4px solid rgb(198, 176, 145) }
```


If only the border color should be changed use the property `border-color`.

```
.border{ border-color:rgb(198, 176, 145) }
```

If you want to add a box shadow in that color use:

Here you see how a box with a 4 pixel `rgb(198, 176, 145)` colored shadow looks like.

```
.boxshadow{ -moz-box-shadow:4px 4px 4px  
4px rgb(198, 176, 145); -webkit-box-  
shadow:4px 4px 4px 4px rgb(198, 176, 145);  
box-shadow:4px 4px 4px 4px rgb(198, 176,  
145) }
```

Background

The CSS property to change the background color of an element to HunterLab 67.1571, -0.7750, 17.7183 is called "background". The background property can be set on classes, ids or directly on the HTML element.

```
.background, #background, body{  
background: rgb(198, 176, 145) }
```

If only the background color should be changed can be used:

```
.background{ background-color: rgb(198,  
176, 145) }
```

This example shows the color as background, it is applied via the CSS property "background".

To optimize and compress your CSS code, you can use our [online CSS compressor and optimizer](#) based on csstidy. If you want to create a linear or radial gradient as background or border, check our [CSS Gradient Generator](#).

Hey! You found this booklet interesting? Support Converting Colors with the new Membership Option!

The pro membership hides all ads, plus gives you double the colors in the color bucket, and more awesome pro features!

[Learn more, Memberships starting at \\$2.50/m!](#)

**Follow me
on Twitter!**

@ConvertingColor