

Converting Colors

HunterLab(67.1615, 2.3592,
16.6926)

Have a look what the booklet for
HunterLab(67.1615, 2.3592,
16.6926) contains.

HunterLab(67.1615, 2.3592, 16.6926)	3
<i>Conversions</i>	4
<i>Details</i>	6
<i>Harmonies</i>	12
<i>Previews</i>	24
<i>Color Blindness Simulation</i>	28
<i>CSS Examples</i>	31

Color

**HunterLab(67.1615, 2.3592,
16.6926)**

Conversions

Conversions Part 1

Format	Color
Hex	CBAE94
RGB	203, 174, 148
RGB Percent	80%, 68%, 58%
CMY	0.2039, 0.3176, 0.4196
CMYK	0.00, 0.14, 0.27, 0.20
HSL	28°, 35%, 69%
HSV	28°, 27%, 80%
XYZ	45.1099, 45.1067, 34.3459
YIQ	179.7070, 25.6300, -1.9380

Conversions

Conversions Part 2

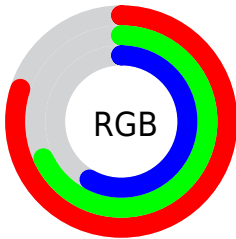
Format	Color
R_{YB}	203, 197, 148
Decimal	13348500
CIE _{Lab}	72.96, 6.56, 17.24
CIE _{LCh}	73, 18.443, 69.181
Yxy	45.1087, 0.3621, 0.3621
Android (android.graphics.Color)	4291538580 (0xFFCBAE94)
YUV	179.7070, -15.6316, 20.4280
Hunter-Lab	67.1615, 2.3592, 16.6926

Details

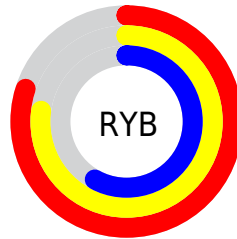
The HunterLab color $67.1615, 2.3592, 16.6926$ is a light color, and the websafe version is hex $CC9999$. A complement of this color would be $64.8466, -6.9154, -11.8216$, and the grayscale version is $67.4927, -3.6012, 3.6670$.

A 20% lighter version of the original color is $90.3122, -0.0862, 18.9651$, and $45.9108, 2.5863, 13.7303$ is the 20% darker color. If you saturate the color by 10%, you get $63.6783, 5.3320, 20.4127$, and if you desaturate by 10%, it is $70.7887, -0.2912, 12.4629$.

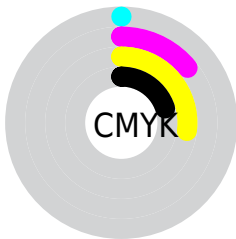
Distribution



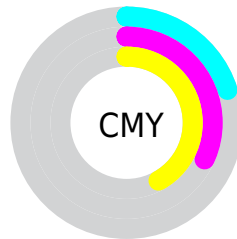
- Red (80%)
- Green (68%)
- Blue (58%)



- Red (80%)
- Yellow (77%)
- Blue (58%)



- Cyan (0%)
- Magenta (14%)
- Yellow (27%)
- Black (20%)



- Cyan (20%)
- Magenta (32%)
- Yellow (42%)

Brightness & Saturation Gradients

These gradients show how the HunterLab color 67.1615, 2.3592, 16.6926 changes by changing the brightness by 10 percent. The first figure shows a shift by +10% for each color and the second figure -10%.

Similar to the brightness gradients but the following saturation gradients show a change of the HunterLab color 67.1615, 2.3592, 16.6926 by changing the saturation by 10% instead.

■ 67.1615, 2.3592,
16.6926

■ 67.1615, 2.3592,
16.6926

191.6282, -1.8762,
30.0287

■ 56.1632, 2.6124,
15.1598

■ 91.0404, 1.6954,
19.6956

■ 45.8397, 2.8110,
13.5906

■ 103.8564, 1.2972,
21.1775

■ 36.2399, 2.9456,
11.9702

117.2230, 0.8581,
22.6529

■ 27.4234, 3.0066,
10.2743

131.1185, 0.3806,
24.1252

■ 19.4670, 2.9805,
8.4642

145.5233, -0.1334,
25.5971

■ 12.4764, 2.8461,
7.0351

160.4201, -0.6818,

■ 5.7277, 4.6810,

27.0706

4.0094

175.7932, -1.2632,
28.5473

0.0000, NaN, NaN

0.0000, NaN, NaN

■ 67.1615, 2.3592,
16.6926

■ 67.1615, 2.3592,
16.6926

■ 63.6783, 5.3320,
20.4127

■ 70.7887, -0.2912,
12.4629

■ 60.3478, 8.6523,
23.5624

■ 74.5434, -2.6340,
7.7747

■ 57.1858, 12.3297,
26.0824

■ 78.4164, -4.6947,
2.6773

■ 54.2078, 16.3651,
27.9152

■ 82.3981, -6.4963,
-2.7863

■ 51.4295, 20.7430,

■ 86.4801, -8.0610,

29.0139

-8.5785

■ 48.8663, 25.4236,
29.3562

■ 90.1068, -12.4481,
-6.9461

■ 46.5299, 30.3279,
28.9865

■ 93.6046, -17.8696,
-2.5595

■ 45.8895, 31.7563,
28.8329

■ 95.6225, -20.9166,
-0.1049

Harmonies

Analogous

The Analogous color harmony consists of three colors that are next to each other on the color wheel.



67.1630, 9.6386, 12.8054



67.1615, 2.3592, 16.6926



67.1630, -6.1904, 17.3357

Triad

The Triadic color harmony groups three colors that are evenly spaced from another and form a triangle on the color wheel.



67.1630, 2.3569, 16.6935



67.1630, -19.0597, 1.1123



67.1630, 7.1188, -9.6330

Complementary

The Complementary color scheme is a pair of colors which are on the opposite of each other on the color wheel.



67.1615, 2.3592, 16.6926



64.8466, -6.9154, -11.8216

Split Complementary

Split-complementary colors differ from the complementary color scheme. The scheme consists of three colors, the original color and two neighbors of the complement color.



67.1630, -0.9438, -13.6895



67.1615, 2.3592, 16.6926



67.1630, -15.8628, -6.9949

Square

The Square scheme is like the rectangle color scheme, but the four colors are evenly spaced on the color wheel.



67.1630, 2.3569, 16.6935



67.1630, -18.2747, 8.9806



67.1630, -9.3316, -12.6679



67.1630, 12.4820, -2.1440

Rectangle

The Rectangle color scheme consists of four colors that form a rectangle on the color wheel.



67.1615, 2.3592, 16.6926



67.1630, -11.4171, 15.9279



67.1630, -9.3316, -12.6679



67.1630, 4.6185, -11.4833

Sweetspot

The Sweet Spot groups the original color and five complimentary colors.



67.1630, 2.3569, 16.6935



95.9605, -3.1183, 10.7008



60.8806, 20.0847, -2.8125



44.0494, -1.2374, 5.3913

0.0000, NaN, NaN



46.2646, -2.4686, 2.5136

Same Dimension

The Same Dimension uses a secret algorithm to generate beautiful new colors.



67.1630, 2.3569, 16.6935



84.0254, 5.4429, 24.7380



75.2900, -11.0830, 24.1358



34.7474, -0.9998, 4.1950



36.8525, 24.7474, 23.1416



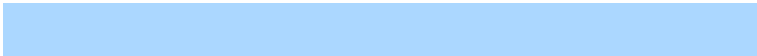
9.2315, 3.6887, 5.7530

Inverse Universe

The Inverse Universe completely reimagines the original color for something new.



64.8466, -6.9154, -11.8216



80.3560, -9.1919, -20.4515



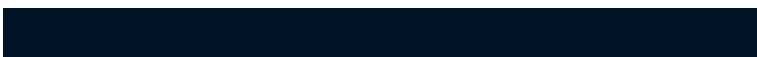
56.8927, 6.7122, -23.7062



34.3607, -2.5558, -0.5623



31.0202, 4.9799, -49.5227



8.0481, -0.6219, -8.7169

Previews

White Background



This preview shows how the HunterLab color 67.1615, 2.3592, 16.6926 looks on a white background.

Color Contrast Check

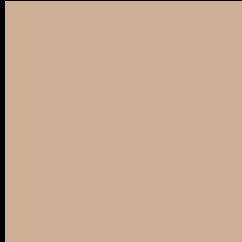
Large Text (above 18pt) WCAG AA × Fail

Any Text WCAG AA × Fail

Large Text (above 18pt) WCAG AAA × Fail

Any Text WCAG AAA × Fail

Black Background



This preview shows how the HunterLab color 67.1615, 2.3592, 16.6926 looks on a black background.

Color Contrast Check

Large Text (above 18pt) WCAG AA ✓ Pass

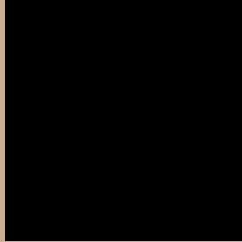
Any Text WCAG AA ✓ Pass

Large Text (above 18pt) WCAG AAA ✓ Pass

Any Text WCAG AAA ✓ Pass

If you want to check with other color combinations, try the [Color Contrast Checker](#).

HunterLab 67.1615, 2.3592, 16.6926 Background



This preview shows how black text looks on a background with the HunterLab color 67.1615, 2.3592, 16.6926.



This preview shows how white text looks on a background with the HunterLab color 67.1615, 2.3592,

Color Blindness Simulation

Color vision deficiency is a very complex topic, and I could not describe the different causes any better than Wikipedia does, so if you want to learn more, you should check out their [article about color blindness](#).

Dichromacy



Original Color

67.1615, 2.3592, 16.6926

Protanopia

67.2763, -4.6754, 15.9446

Deuteranopia

67.0139, 4.7997, 16.5898



Tritanopia

67.0960, 11.2469, 2.4339

Trichromacy



Original Color

67.1615, 2.3592, 16.6926

Protanomaly

67.1443, -2.1386, 16.2289

Deuteranomaly

67.1916, 3.9334, 16.7497

Tritanomaly

67.1937, 7.9897, 7.9874

Monochromacy



Original Color

67.1615, 2.3592, 16.6926

Achromatopsia

67.5582, -3.6047, 3.6706

Achromatomaly

67.3493, -1.9681, 8.8532

CSS Examples

Text

The CSS property to change the color of the text to HunterLab 67.1615, 2.3592, 16.6926 is called "color". The color property can be set on classes, ids or directly on the HTML element.

This example shows how text in the color `rgb(203, 174, 148)` looks like.

```
.text, #text, p{  
    color:rgb(203, 174, 148)  
}
```

If you want to add a text shadow in that color use the text-shadow property, you can generate a text shadow directly with our [CSS Text Shadow Generator](#).

Here you see how black text with a 4 pixel rgb(203, 174, 148) colored shadow looks like.

```
.shadow{ text-shadow: 4px 4px 2px rgb(203, 174, 148) }
```

Border

The CSS property to change the border of an element to HunterLab 67.1615, 2.3592, 16.6926 is called "border". The border property can be set on classes, ids or directly on the HTML element.

This example shows the color as border, it can be applied via the CSS property "border" or "border-color".

```
.border, #border, table{ border:4px solid rgb(203, 174, 148) }
```


If only the border color should be changed use the property `border-color`.

```
.border{ border-color:rgb(203, 174, 148) }
```

If you want to add a box shadow in that color use:

Here you see how a box with a 4 pixel `rgb(203, 174, 148)` colored shadow looks like.

```
.boxshadow{ -moz-box-shadow:4px 4px 4px  
4px rgb(203, 174, 148); -webkit-box-  
shadow:4px 4px 4px 4px rgb(203, 174, 148);  
box-shadow:4px 4px 4px 4px rgb(203, 174,  
148) }
```

Background

The CSS property to change the background color of an element to HunterLab 67.1615, 2.3592, 16.6926 is called "background". The background property can be set on classes, ids or directly on the HTML element.

```
.background, #background, body{  
background: rgb(203, 174, 148) }
```

If only the background color should be changed can be used:

```
.background{ background-color: rgb(203,  
174, 148) }
```

This example shows the color as background, it is applied via the CSS property "background".

To optimize and compress your CSS code, you can use our [online CSS compressor and optimizer](#) based on csstidy. If you want to create a linear or radial gradient as background or border, check our [CSS Gradient Generator](#).

Hey! You found this booklet interesting? Support Converting Colors with the new Membership Option!

The pro membership hides all ads, plus gives you double the colors in the color bucket, and more awesome pro features!

[Learn more, Memberships starting at \\$2.50/m!](#)

**Follow me
on Twitter!**

@ConvertingColor