

Converting Colors

HunterLab(67.2043, -0.1261,
9.2205)

Have a look what the booklet for
HunterLab(67.2043, -0.1261, 9.2205)
contains.

HunterLab(67.1172, 0.1988, 9.0651)	3
<i>Conversions</i>	4
<i>Details</i>	6
<i>Harmonies</i>	12
<i>Previews</i>	24
<i>Color Blindness Simulation</i>	28
<i>CSS Examples</i>	31

Color

**HunterLab(67.1172, 0.1988,
9.0651)**

Conversions

Conversions Part 1

Format	Color
Hex	C0B0A7
RGB	192, 176, 167
RGB Percent	75%, 69%, 65%
CMY	0.2471, 0.3098, 0.3451
CMYK	0.00, 0.08, 0.13, 0.25
HSL	22°, 17%, 70%
HSV	22°, 13%, 75%
XYZ	44.2387, 45.0472, 42.9226
YIQ	179.7580, 12.4250, 0.5930

Conversions

Conversions Part 2

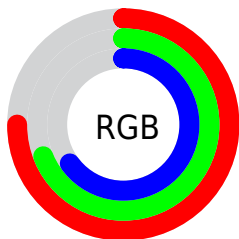
Format	Color
RYB	192, 181, 167
Decimal	12628135
CIELab	72.92, 4.20, 6.67
CIElCh	73, 7.881, 57.821
Yxy	45.0492, 0.3346, 0.3407
Android (android.graphics.Color)	4290818215 (0xFFC0B0A7)
YUV	179.7580, -6.2897, 10.7362
Hunter-Lab	67.1172, 0.1988, 9.0651

Details

The HunterLab color $67.1172, 0.1988, 9.0651$ is a light color, and the websafe version is hex `CCCCCC`. A complement of this color would be $67.7402, -6.8604, -2.0276$, and the grayscale version is $67.4802, -3.6006, 3.6663$.

A 20% lighter version of the original color is $91.1739, -0.7608, 11.2275$, and $45.8872, 0.5441, 7.3279$ is the 20% darker color. If you saturate the color by 10%, you get $63.0785, 3.6349, 12.6755$, and if you desaturate by 10%, it is $71.3098, -2.9680, 5.1712$.

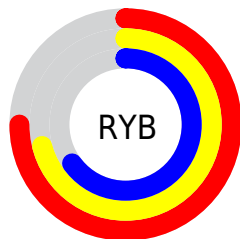
Distribution



Red (75%)

Green (69%)

Blue (65%)



Red (75%)

Yellow (71%)

Blue (65%)

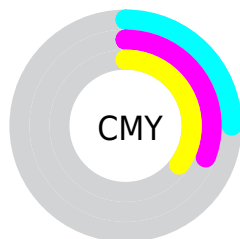


Cyan (0%)

Magenta (8%)

Yellow (13%)

Black (25%)



Cyan (25%)

Magenta (31%)

Yellow (35%)

Brightness & Saturation Gradients

These gradients show how the HunterLab color 67.1172, 0.1988, 9.0651 changes by changing the brightness by 10 percent. The first figure shows a shift by +10% for each color and the second figure -10%.

Similar to the brightness gradients but the following saturation gradients show a change of the HunterLab color 67.1172, 0.1988, 9.0651 by changing the saturation by 10% instead.

■ 67.1172, 0.1988,
9.0651

■ 67.1172, 0.1988,
9.0651

191.5653, -4.8967,
18.2770

■ 56.1214, 0.5702,
8.1256

■ 90.9913, -0.6828,
10.9921

■ 45.8006, 0.8937,
7.1976

■ 103.8051, -1.1830,
11.9798

■ 36.2038, 1.1619,
6.2785

117.1696, -1.7200,
12.9848

■ 27.3905, 1.3672,
5.3626

131.0630, -2.2919,
14.0075

■ 19.4376, 1.4991,
4.4400

145.4659, -2.8969,
15.0480

■ 12.4511, 1.5410,
3.4909

160.3608, -3.5336,

■ 5.6898, 2.9104,

16.1064

3.9828

175.7321, -4.2006,
17.1828

0.0000, NaN, NaN

0.0000, NaN, NaN

■ 67.1172, 0.1988,
9.0651

■ 67.1172, 0.1988,
9.0651

■ 63.0785, 3.6349,
12.6755

■ 71.3098, -2.9680,
5.1712

■ 59.2066, 7.3689,
15.9526

■ 75.6369, -5.8843,
1.0298

■ 55.5227, 11.4172,
18.8419

■ 80.0872, -8.5764,
-3.3260

■ 52.0497, 15.7882,
21.2796

■ 84.6496, -11.0673,
-7.8697

■ 48.8129, 20.4736,

■ 89.0197, -15.0258,

23.1958

-8.4214

■ 45.8401, 25.4389,
24.5201

■ 93.0708, -21.1683,
-3.2898

■ 43.1599, 30.6118,
25.1943

■ 94.8402, -23.7795,
-1.1209

■ 40.7996, 35.8698,
25.1953

■ 39.3459, 39.4610,
24.9356

Harmonies

Analogous

The Analogous color harmony consists of three colors that are next to each other on the color wheel.



67.1187, 2.7407, 6.6976



67.1172, 0.1988, 9.0651



67.1187, -3.3176, 9.9931

Triad

The Triadic color harmony groups three colors that are evenly spaced from another and form a triangle on the color wheel.



67.1187, 0.1969, 9.0661



67.1187, -10.4604, 3.9070



67.1187, -0.2753, -2.5285

Complementary

The Complementary color scheme is a pair of colors which are on the opposite of each other on the color wheel.



67.1172, 0.1988, 9.0651



67.7402, -6.8604, -2.0276

Split Complementary

Split-complementary colors differ from the complementary color scheme. The scheme consists of three colors, the original color and two neighbors of the complement color.



67.1187, -3.8518, -3.3720



67.1172, 0.1988, 9.0651



67.1187, -9.6845, 0.4597

Square

The Square scheme is like the rectangle color scheme, but the four colors are evenly spaced on the color wheel.



67.1187, 0.1969, 9.0661



67.1187, -9.4268, 7.1153



67.1187, -7.2847, -2.2513



67.1187, 2.4640, -0.0032

Rectangle

The Rectangle color scheme consists of four colors that form a rectangle on the color wheel.



67.1172, 0.1988, 9.0651



67.1187, -5.7209, 9.7082



67.1187, -7.2847, -2.2513



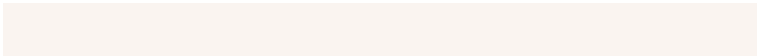
67.1187, -1.4218, -3.0238

Sweetspot

The Sweet Spot groups the original color and five complimentary colors.



67.1187, 0.1969, 9.0661



95.3910, -3.5668, 7.5243



65.0184, 7.3737, -0.7847



43.9820, -1.5065, 3.6740



98.8636, -5.2751, 5.3714



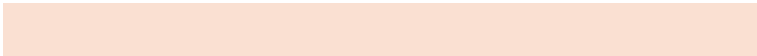
45.2661, -2.4153, 2.4594

Same Dimension

The Same Dimension uses a secret algorithm to generate beautiful new colors.



67.1187, 0.1969, 9.0661



88.5640, 1.7207, 13.8208



70.7605, -5.8982, 12.8656



32.6472, -0.4698, 3.6517



32.4845, 31.8035, 20.5736



7.6634, 4.3553, 4.7984

Inverse Universe

The Inverse Universe completely reimagines the original color for something new.



67.7402, -6.8604, -2.0276



89.6039, -10.0970, -4.7538



64.0729, -0.7836, -6.6793



32.8610, -2.8961, -0.1627



34.9575, -3.8233, -35.4403



8.0918, -2.0571, -5.6734

Previews

White Background



This preview shows how the HunterLab color 67.1172, 0.1988, 9.0651 looks on a white background.

Color Contrast Check

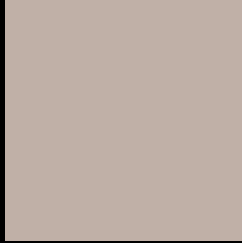
Large Text (above 18pt) WCAG AA × Fail

Any Text WCAG AA × Fail

Large Text (above 18pt) WCAG AAA × Fail

Any Text WCAG AAA × Fail

Black Background



This preview shows how the HunterLab color 67.1172, 0.1988, 9.0651 looks on a black background.

Color Contrast Check

Large Text (above 18pt) WCAG AA ✓ Pass

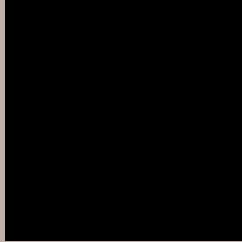
Any Text WCAG AA ✓ Pass

Large Text (above 18pt) WCAG AAA ✓ Pass

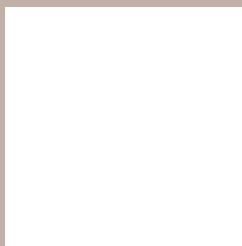
Any Text WCAG AAA ✓ Pass

If you want to check with other color combinations, try the [Color Contrast Checker](#).

HunterLab 67.1172, 0.1988, 9.0651 Background



This preview shows how black text looks on a background with the HunterLab color 67.1172, 0.1988, 9.0651.



This preview shows how white text looks on a background with the HunterLab color 67.1172, 0.1988,

Color Blindness Simulation

Color vision deficiency is a very complex topic, and I could not describe the different causes any better than Wikipedia does, so if you want to learn more, you should check out their [article about color blindness](#).

Dichromacy



Original Color

67.1172, 0.1988, 9.0651

Protanopia

67.0688, -2.9392, 8.5269

Deuteranopia

67.1802, 4.9208, 8.7875



Tritanopia

67.1395, 5.9172, -0.0426

Trichromacy



Original Color

67.1172, 0.1988, 9.0651

Protanomaly

67.0543, -1.4697, 8.5366

Deuteranomaly

67.1603, 3.3808, 8.7385

Tritanomaly

67.1094, 3.9066, 3.2721

Monochromacy



Original Color

67.1172, 0.1988, 9.0651

Achromatopsia

67.5582, -3.6047, 3.6706

Achromatomaly

67.4727, -2.6664, 5.8908

CSS Examples

Text

The CSS property to change the color of the text to HunterLab 67.1172, 0.1988, 9.0651 is called "color". The color property can be set on classes, ids or directly on the HTML element.

This example shows how text in the color `rgb(192, 176, 167)` looks like.

```
.text, #text, p{  
    color:rgb(192, 176, 167)  
}
```

If you want to add a text shadow in that color use the text-shadow property, you can generate a text shadow directly with our [CSS Text Shadow Generator](#).

Here you see how black text with a 4 pixel rgb(192, 176, 167) colored shadow looks like.

```
.shadow{ text-shadow: 4px 4px 2px rgb(192, 176, 167) }
```

Border

The CSS property to change the border of an element to HunterLab 67.1172, 0.1988, 9.0651 is called "border".

The border property can be set on classes, ids or directly on the HTML element.

This example shows the color as border, it can be applied via the CSS property "border" or "border-color".

```
.border, #border, table{ border:4px solid rgb(192, 176, 167) }
```


If only the border color should be changed use the property `border-color`.

```
.border{ border-color:rgb(192, 176, 167) }
```

If you want to add a box shadow in that color use:

Here you see how a box with a 4 pixel `rgb(192, 176, 167)` colored shadow looks like.

```
.boxshadow{ -moz-box-shadow:4px 4px 4px  
4px rgb(192, 176, 167); -webkit-box-  
shadow:4px 4px 4px 4px rgb(192, 176, 167);  
box-shadow:4px 4px 4px 4px rgb(192, 176,  
167) }
```

Background

The CSS property to change the background color of an element to HunterLab 67.1172, 0.1988, 9.0651 is called "background". The background property can be set on classes, ids or directly on the HTML element.

```
.background, #background, body{  
background: rgb(192, 176, 167) }
```

If only the background color should be changed can be used:

```
.background{ background-color: rgb(192,  
176, 167) }
```

This example shows the color as background, it is applied via the CSS property "background".

To optimize and compress your CSS code, you can use our [online CSS compressor and optimizer](#) based on csstidy. If you want to create a linear or radial gradient as background or border, check our [CSS Gradient Generator](#).

Hey! You found this booklet interesting? Support Converting Colors with the new Membership Option!

The pro membership hides all ads, plus gives you double the colors in the color bucket, and more awesome pro features!

[Learn more, Memberships starting at \\$2.50/m!](#)

**Follow me
on Twitter!**

@ConvertingColor