

Converting Colors

HunterLab(67.2530, 8.3524,
6.1400)

Have a look what the booklet for
HunterLab(67.2530, 8.3524, 6.1400)
contains.

HunterLab(67.2019, 8.2455, 6.2240)	3
<i>Conversions</i>	4
<i>Details</i>	6
<i>Harmonies</i>	12
<i>Previews</i>	24
<i>Color Blindness Simulation</i>	28
<i>CSS Examples</i>	31

Color

**HunterLab(67.2019, 8.2455,
6.2240)**

Conversions

Conversions Part 1

Format	Color
Hex	CDABAE
RGB	205, 171, 174
RGB Percent	80%, 67%, 68%
CMY	0.1961, 0.3294, 0.3176
CMYK	0.00, 0.17, 0.15, 0.20
HSL	355°, 25%, 74%
HSV	355°, 17%, 80%
XYZ	47.3797, 45.1610, 46.2642
YIQ	181.5080, 19.3010, 8.1410

Conversions

Conversions Part 2

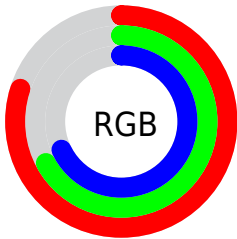
Format	Color
R _Y B	205, 171, 174
Decimal	13478830
CIE Lab	73.00, 12.84, 3.09
CIE LCh	73, 13.203, 13.527
Yxy	45.1630, 0.3413, 0.3254
Android (android.graphics.Color)	4291668910 (0xFFCDABAE)
YUV	181.5080, -3.7014, 20.6025
Hunter-Lab	67.2019, 8.2455, 6.2240

Details

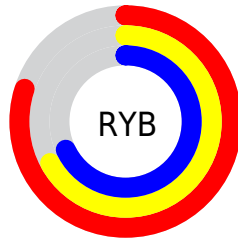
The HunterLab color $67.2019, 8.2455, 6.2240$ is a light color, and the websafe version is hex $CC9999$. A complement of this color would be $75.2236, -14.6838, 2.0518$, and the grayscale version is $68.1994, -3.6389, 3.7054$.

A 20% lighter version of the original color is $90.1720, 5.6688, 6.9216$, and $45.9160, 7.8447, 4.6553$ is the 20% darker color. If you saturate the color by 10%, you get $61.0986, 16.0918, 7.7062$, and if you desaturate by 10%, it is $73.6873, 0.6692, 4.9665$.

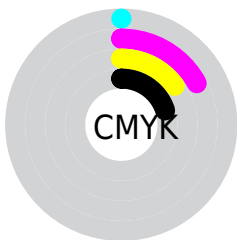
Distribution



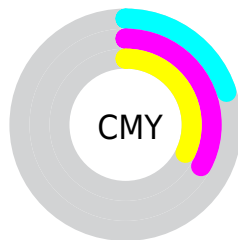
- Red (80%)
- Green (67%)
- Blue (68%)



- Red (80%)
- Yellow (67%)
- Blue (68%)



- Cyan (0%)
- Magenta (17%)
- Yellow (15%)
- Black (20%)





- Cyan (20%)
- Magenta (33%)
- Yellow (32%)

Brightness & Saturation Gradients


These gradients show how the HunterLab color 67.2019, 8.2455, 6.2240 changes by changing the brightness by 10 percent. The first figure shows a shift by +10% for each color and the second figure -10%.


Similar to the brightness gradients but the following saturation gradients show a change of the HunterLab color 67.2019, 8.2455, 6.2240 by changing the saturation by 10% instead.

 67.2019, 8.2455,
6.2240

 67.2019, 8.2455,
6.2240

191.6855, 6.2653,
14.1118

 56.2013, 8.1932,
5.4715


 91.0851, 8.1507,
7.8095

 45.8752, 8.0687,
4.7442

103.9031, 8.0191,
8.6393

 36.2728, 7.8598,
4.0431


117.2716, 7.8365,
9.4934

 27.4533, 7.5528,
3.3678

131.1689, 7.6065,
10.3714

 19.4937, 7.1286,
2.7166

145.5755, 7.3319,
11.2728

 12.4994, 6.5596,
2.0852

160.4741, 7.0154,

 5.7621, 9.3996,

12.1969

2.5353

175.8489, 6.6592,
13.1434

0.0000, NaN, NaN

0.0000, NaN, NaN

■ 67.2019, 8.2455,
6.2240

■ 67.2019, 8.2455,
6.2240

■ 61.0986, 16.0918,
7.7062

■ 73.6873, 0.6692,
4.9665

■ 55.4445, 24.1777,
9.4342

■ 80.4931, -6.6364,
3.9010

■ 50.3296, 32.3843,
11.4177

■ 87.5757, -13.6986,
3.0002

■ 45.8585, 40.4624,
13.6303

■ 94.8992, -20.5495,
2.2386

■ 42.1449, 47.9826,

■ 95.7702, -20.3788,

15.9863

0.0860

■ 39.2932, 54.3428,
18.3213

■ 37.3657, 58.9076,
20.4066

■ 36.3306, 61.3284,
22.0093

■ 36.0876, 61.9227,
22.3761

Harmonies

Analogous

The Analogous color harmony consists of three colors that are next to each other on the color wheel.



67.2034, 8.0762, 0.4046



67.2019, 8.2455, 6.2240



67.2034, 5.1606, 10.9225

Triad

The Triadic color harmony groups three colors that are evenly spaced from another and form a triangle on the color wheel.



67.2034, 8.2434, 6.2251



67.2034, -11.5062, 11.2815



67.2034, -6.8950, -7.9912

Complementary

The Complementary color scheme is a pair of colors which are on the opposite of each other on the color wheel.



67.2019, 8.2455, 6.2240



75.2236, -14.6838, 2.0518

Split Complementary

Split-complementary colors differ from the complementary color scheme. The scheme consists of three colors, the original color and two neighbors of the complement color.



67.2034, -11.9135, -4.5204



67.2019, 8.2455, 6.2240



67.2034, -14.5098, 6.7566

Square

The Square scheme is like the rectangle color scheme, but the four colors are evenly spaced on the color wheel.



67.2034, 8.2434, 6.2251



67.2034, -6.3209, 13.6605



67.2034, -14.6562, 0.9856



67.2034, -0.8136, -8.1659

Rectangle

The Rectangle color scheme consists of four colors that form a rectangle on the color wheel.



67.2019, 8.2455, 6.2240



67.2034, 1.7392, 12.9301



67.2034, -14.6562, 0.9856



67.2034, -8.7570, -7.1581

Sweetspot

The Sweet Spot groups the original color and five complimentary colors.



67.2034, 8.2434, 6.2251



95.6069, -0.5859, 6.1342



67.8502, 12.3618, -8.4457



43.9502, 0.0410, 2.8858

0.0000, NaN, NaN



46.2646, -2.4686, 2.5136

Same Dimension

The Same Dimension uses a secret algorithm to generate beautiful new colors.



67.2034, 8.2434, 6.2251



83.0808, 14.1979, 8.6281



71.0295, 0.8335, 11.6202



33.5104, 1.2919, 2.4722



28.4840, 48.8969, 17.4972



6.5133, 11.2676, 3.3295

Inverse Universe

The Inverse Universe completely reimagines the original color for something new.



67.2034, 8.2434, 6.2251



83.0808, 14.1979, 8.6281



71.0659, -7.4838, -4.5278



33.5104, 1.2919, 2.4722



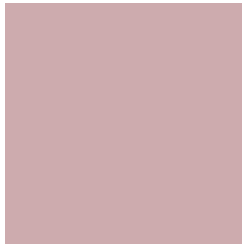
28.4840, 48.8969, 17.4972



6.5133, 11.2676, 3.3295

Previews

White Background



This preview shows how the HunterLab color 67.2019, 8.2455, 6.2240 looks on a white background.

Color Contrast Check

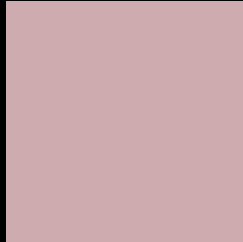
Large Text (above 18pt) WCAG AA × Fail

Any Text WCAG AA × Fail

Large Text (above 18pt) WCAG AAA × Fail

Any Text WCAG AAA × Fail

Black Background



This preview shows how the HunterLab color 67.2019, 8.2455, 6.2240 looks on a black background.

Color Contrast Check

Large Text (above 18pt) WCAG AA ✓ Pass

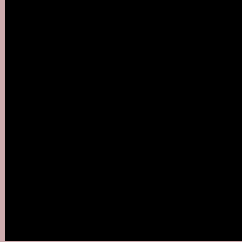
Any Text WCAG AA ✓ Pass

Large Text (above 18pt) WCAG AAA ✓ Pass

Any Text WCAG AAA ✓ Pass

If you want to check with other color combinations, try the [Color Contrast Checker](#).

HunterLab 67.2019, 8.2455, 6.2240 Background



This preview shows how black text looks on a background with the HunterLab color 67.2019, 8.2455, 6.2240.



This preview shows how white text looks on a background with the HunterLab color 67.2019, 8.2455,

Color Blindness Simulation

Color vision deficiency is a very complex topic, and I could not describe the different causes any better than Wikipedia does, so if you want to learn more, you should check out their [article about color blindness](#).

Dichromacy



Original Color

67.2019, 8.2455, 6.2240

Protanopia

67.4699, -2.4997, 4.5178

Deuteranopia

67.1455, 5.1454, 6.1054



Tritanopia

67.2980, 10.5391, 2.1843

Trichromacy



Original Color

67.2019, 8.2455, 6.2240

Protanomaly

67.3063, 1.4160, 4.8577

Deuteranomaly

67.0660, 6.3432, 6.0354

Tritanomaly

67.2061, 10.0546, 3.4942

Monochromacy



Original Color

67.2019, 8.2455, 6.2240

Achromatopsia

68.3947, -3.6494, 3.7160

Achromatomaly

67.8547, 0.4011, 4.5540

CSS Examples

Text

The CSS property to change the color of the text to HunterLab 67.2019, 8.2455, 6.2240 is called "color". The color property can be set on classes, ids or directly on the HTML element.

This example shows how text in the color `rgb(205, 171, 174)` looks like.

```
.text, #text, p{  
    color:rgb(205, 171, 174)  
}
```

If you want to add a text shadow in that color use the text-shadow property, you can generate a text shadow directly with our [CSS Text Shadow Generator](#).

Here you see how black text with a 4 pixel rgb(205, 171, 174) colored shadow looks like.

```
.shadow{ text-shadow: 4px 4px 2px rgb(205, 171, 174) }
```

Border

The CSS property to change the border of an element to HunterLab 67.2019, 8.2455, 6.2240 is called "border". The border property can be set on classes, ids or directly on the HTML element.

This example shows the color as border, it can be applied via the CSS property "border" or "border-color".

```
.border, #border, table{ border:4px solid rgb(205, 171, 174) }
```


If only the border color should be changed use the property `border-color`.

```
.border{ border-color:rgb(205, 171, 174) }
```

If you want to add a box shadow in that color use:

Here you see how a box with a 4 pixel `rgb(205, 171, 174)` colored shadow looks like.

```
.boxshadow{ -moz-box-shadow:4px 4px 4px  
4px rgb(205, 171, 174); -webkit-box-  
shadow:4px 4px 4px 4px rgb(205, 171, 174);  
box-shadow:4px 4px 4px 4px rgb(205, 171,  
174) }
```

Background

The CSS property to change the background color of an element to HunterLab 67.2019, 8.2455, 6.2240 is called "background". The background property can be set on classes, ids or directly on the HTML element.

```
.background, #background, body{  
background: rgb(205, 171, 174) }
```

If only the background color should be changed can be used:

```
.background{ background-color: rgb(205,  
171, 174) }
```

This example shows the color as background, it is applied via the CSS property "background".

To optimize and compress your CSS code, you can use our [online CSS compressor and optimizer](#) based on csstidy. If you want to create a linear or radial gradient as background or border, check our [CSS Gradient Generator](#).

Hey! You found this booklet interesting? Support Converting Colors with the new Membership Option!

The pro membership hides all ads, plus gives you double the colors in the color bucket, and more awesome pro features!

[Learn more, Memberships starting at \\$2.50/m!](#)

**Follow me
on Twitter!**

@ConvertingColor