

Converting Colors

HunterLab(67.2596, 11.0126,
8.5493)

Have a look what the booklet for
HunterLab(67.2596, 11.0126,
8.5493) contains.

HunterLab(67.2589, 11.0144, 8.5486)	3
<i>Conversions</i>	4
<i>Details</i>	6
<i>Harmonies</i>	12
<i>Previews</i>	24
<i>Color Blindness Simulation</i>	28
<i>CSS Examples</i>	31

Color

**HunterLab(67.2589, 11.0144,
8.5486)**

Conversions

Conversions Part 1

Format	Color
Hex	D4A9A9
RGB	212, 169, 169
RGB Percent	83%, 66%, 66%
CMY	0.1686, 0.3372, 0.3372
CMYK	0.00, 0.20, 0.20, 0.17
HSL	0°, 33%, 75%
HSV	0°, 20%, 83%
XYZ	48.5008, 45.2376, 43.7116
YIQ	181.8570, 25.6280, 9.1160

Conversions

Conversions Part 2

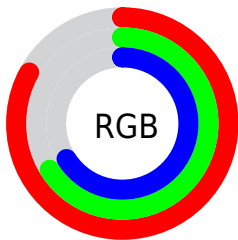
Format	Color
R _Y B	212, 169, 169
Decimal	13937065
CIE Lab	73.05, 15.72, 5.99
CIE LCh	73, 16.825, 20.865
Yxy	45.2397, 0.3529, 0.3291
Android (android.graphics.Color)	4292127145 (0xFFD4A9A9)
YUV	181.8570, -6.3385, 26.4354
Hunter-Lab	67.2589, 11.0144, 8.5486

Details

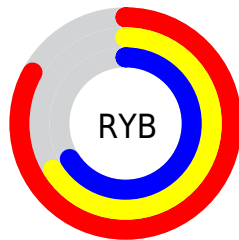
The HunterLab color $67.2589, 11.0144, 8.5486$ is a light color, and the websafe version is hex $CC9999$. A complement of this color would be $77.6363, -16.7915, -0.0233$, and the grayscale version is $68.3543, -3.6472, 3.7138$.

A 20% lighter version of the original color is $89.4165, 5.9185, 8.4408$, and $46.0163, 10.5393, 6.8553$ is the 20% darker color. If you saturate the color by 10%, you get $61.0314, 19.0775, 10.8037$, and if you desaturate by 10%, it is $73.9180, 3.2793, 6.4380$.

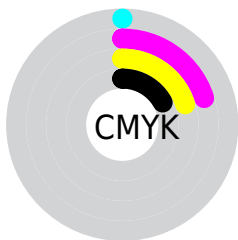
Distribution



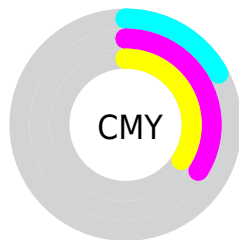
- Red (83%)
- Green (66%)
- Blue (66%)



- Red (83%)
- Yellow (66%)
- Blue (66%)



- Cyan (0%)
- Magenta (20%)
- Yellow (20%)
- Black (17%)





- Cyan (17%)
- Magenta (34%)
- Yellow (34%)

Brightness & Saturation Gradients


These gradients show how the HunterLab color 67.2589, 11.0144, 8.5486 changes by changing the brightness by 10 percent. The first figure shows a shift by +10% for each color and the second figure -10%.


Similar to the brightness gradients but the following saturation gradients show a change of the HunterLab color 67.2589, 11.0144, 8.5486 by changing the saturation by 10% instead.


 67.2589, 11.0144,
8.5486


 67.2589, 11.0144,
8.5486


191.7663, 10.0488,
17.5089

 56.2550, 10.8259,
7.6450


 91.1482, 11.1738,
10.4105

 45.9254, 10.5585,
6.7555


 103.9690, 11.1619,
11.3682

 36.3192, 10.1986,
5.8784


117.3403, 11.0947,
12.3445

 27.4956, 9.7314,
5.0091

131.2402, 10.9762,
13.3397

 19.5315, 9.1368,
4.1393

145.6493, 10.8096,
14.3539

 12.5320, 8.3873,
3.2525

160.5503, 10.5979,

 5.8102, 11.4806,

15.3868

4.0672

175.9274, 10.3436,
16.4386

0.0000, NaN, NaN

0.0000, NaN, NaN

■ 67.2589, 11.0144,
8.5486

■ 67.2589, 11.0144,
8.5486

■ 61.0314, 19.0775,
10.8037

■ 73.9180, 3.2793,
6.4380

■ 55.3146, 27.4239,
13.1887

■ 80.9375, -4.1247,
4.4625

■ 50.2120, 35.8960,
15.6600

■ 88.2661, -11.2298,
2.6094

■ 45.8412, 44.1739,
18.1187

■ 95.8621, -18.0745,
0.8628

■ 42.3234, 51.7307,

■ 96.3001, -18.4565,

20.3971

0.7685

■ 39.7566, 57.8805,
22.2721

■ 38.1736, 61.9942,
23.5357

■ 37.4133, 64.0685,
24.1755

Harmonies

Analogous

The Analogous color harmony consists of three colors that are next to each other on the color wheel.



67.2604, 11.8741, 1.3552



67.2589, 11.0144, 8.5486



67.2604, 6.1432, 13.8194

Triad

The Triadic color harmony groups three colors that are evenly spaced from another and form a triangle on the color wheel.



67.2604, 11.0121, 8.5497



67.2604, -14.8411, 12.0621



67.2604, -5.9583, -12.0130

Complementary

The Complementary color scheme is a pair of colors which are on the opposite of each other on the color wheel.



67.2589, 11.0144, 8.5486



77.6363, -16.7915, -0.0233

Split Complementary

Split-complementary colors differ from the complementary color scheme. The scheme consists of three colors, the original color and two neighbors of the complement color.



67.2604, -12.8041, -8.3795



67.2589, 11.0144, 8.5486



67.2604, -17.7766, 5.8882

Square

The Square scheme is like the rectangle color scheme, but the four colors are evenly spaced on the color wheel.



67.2604, 11.0121, 8.5497



67.2604, -8.8543, 15.6809



67.2604, -17.0483, -1.6243



67.2604, 1.8363, -11.0904

Rectangle

The Rectangle color scheme consists of four colors that form a rectangle on the color wheel.



67.2589, 11.0144, 8.5486



67.2604, 1.3975, 15.7996



67.2604, -17.0483, -1.6243



67.2604, -8.4411, -11.2698

Sweetspot

The Sweet Spot groups the original color and five complimentary colors.



67.2604, 11.0121, 8.5497



94.6985, 0.1438, 6.8876



68.6492, 18.2546, -11.1750



43.5490, 0.3465, 3.2614

0.0000, NaN, NaN



46.2646, -2.4686, 2.5136

Same Dimension

The Same Dimension uses a secret algorithm to generate beautiful new colors.



67.2604, 11.0121, 8.5497



79.7767, 17.4714, 11.6192



73.4207, -0.0336, 14.9286



35.2434, 1.2457, 2.9630



29.3963, 50.3391, 18.9951



7.2199, 12.3613, 4.6653

Inverse Universe

The Inverse Universe completely reimagines the original color for something new.



77.6363, -16.7915, -0.0233



94.9628, -23.3194, -0.9610



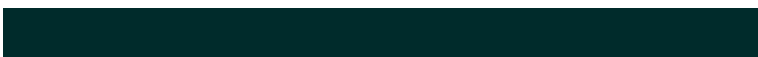
70.8752, -6.2450, -8.5426



37.5602, -4.9374, 1.0572



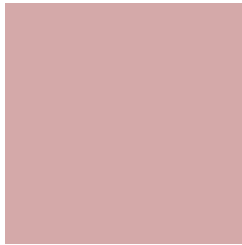
56.5666, -29.9854, -5.9734



13.8925, -7.3645, -1.4667

Previews

White Background



This preview shows how the HunterLab color 67.2589, 11.0144, 8.5486 looks on a white background.

Color Contrast Check

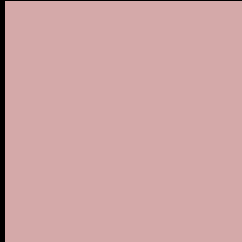
Large Text (above 18pt) WCAG AA × Fail

Any Text WCAG AA × Fail

Large Text (above 18pt) WCAG AAA × Fail

Any Text WCAG AAA × Fail

Black Background



This preview shows how the HunterLab color 67.2589, 11.0144, 8.5486 looks on a black background.

Color Contrast Check

Large Text (above 18pt) WCAG AA ✓ Pass

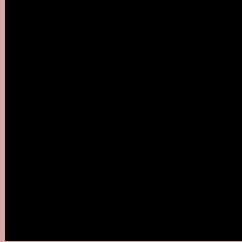
Any Text WCAG AA ✓ Pass

Large Text (above 18pt) WCAG AAA ✓ Pass

Any Text WCAG AAA ✓ Pass

If you want to check with other color combinations, try the [Color Contrast Checker](#).

HunterLab 67.2589, 11.0144, 8.5486 Background



This preview shows how black text looks on a background with the HunterLab color 67.2589, 11.0144, 8.5486.



This preview shows how white text looks on a background with the HunterLab color 67.2589, 11.0144,

8.5486.

Color Blindness Simulation

Color vision deficiency is a very complex topic, and I could not describe the different causes any better than Wikipedia does, so if you want to learn more, you should check out their [article about color blindness](#).

Dichromacy



Original Color

67.2589, 11.0144, 8.5486

Protanopia

67.4437, -2.8250, 6.3059

Deuteranopia

67.1802, 4.9208, 8.7875



Tritanopia

67.1408, 14.0973, 3.4877

Trichromacy



Original Color

67.2589, 11.0144, 8.5486

Protanomaly

67.1624, 2.1292, 6.9675

Deuteranomaly

67.3137, 6.8266, 8.9679

Tritanomaly

67.2949, 12.9486, 5.5050

Monochromacy



Original Color

67.2589, 11.0144, 8.5486

Achromatopsia

68.3947, -3.6494, 3.7160

Achromatomaly

67.7909, 1.5675, 5.4209

CSS Examples

Text

The CSS property to change the color of the text to HunterLab 67.2589, 11.0144, 8.5486 is called "color". The color property can be set on classes, ids or directly on the HTML element.

This example shows how text in the color `rgb(212, 169, 169)` looks like.

```
.text, #text, p{  
    color:rgb(212, 169, 169)  
}
```

If you want to add a text shadow in that color use the text-shadow property, you can generate a text shadow directly with our [CSS Text Shadow Generator](#).

Here you see how black text with a 4 pixel rgb(212, 169, 169) colored shadow looks like.

```
.shadow{ text-shadow: 4px 4px 2px rgb(212, 169, 169) }
```

Border

The CSS property to change the border of an element to HunterLab 67.2589, 11.0144, 8.5486 is called "border". The border property can be set on classes, ids or directly on the HTML element.

This example shows the color as border, it can be applied via the CSS property "border" or "border-color".

```
.border, #border, table{ border:4px solid rgb(212, 169, 169) }
```


If only the border color should be changed use the property border-color.

```
.border{ border-color:rgb(212, 169, 169) }
```

If you want to add a box shadow in that color use:

Here you see how a box with a 4 pixel rgb(212, 169, 169) colored shadow looks like.

```
.boxshadow{ -moz-box-shadow:4px 4px 4px  
4px rgb(212, 169, 169); -webkit-box-  
shadow:4px 4px 4px 4px rgb(212, 169, 169);  
box-shadow:4px 4px 4px 4px rgb(212, 169,  
169) }
```

Background

The CSS property to change the background color of an element to HunterLab 67.2589, 11.0144, 8.5486 is called "background". The background property can be set on classes, ids or directly on the HTML element.

```
.background, #background, body{  
background: rgb(212, 169, 169) }
```

If only the background color should be changed can be used:

```
.background{ background-color: rgb(212,  
169, 169) }
```

This example shows the color as background, it is applied via the CSS property "background".

To optimize and compress your CSS code, you can use our [online CSS compressor and optimizer](#) based on csstidy. If you want to create a linear or radial gradient as background or border, check our [CSS Gradient Generator](#).

Hey! You found this booklet interesting? Support Converting Colors with the new Membership Option!

The pro membership hides all ads, plus gives you double the colors in the color bucket, and more awesome pro features!

[Learn more, Memberships starting at \\$2.50/m!](#)

**Follow me
on Twitter!**

@ConvertingColor