

Converting Colors

HunterLab(67.2919, 3.8286,
8.4313)

Have a look what the booklet for
HunterLab(67.2919, 3.8286, 8.4313)
contains.

HunterLab(67.2895, 3.8722, 8.4575)	3
<i>Conversions</i>	4
<i>Details</i>	6
<i>Harmonies</i>	12
<i>Previews</i>	24
<i>Color Blindness Simulation</i>	28
<i>CSS Examples</i>	31

Color

**HunterLab(67.2895, 3.8722,
8.4575)**

Conversions

Conversions Part 1

Format	Color
Hex	C7AEA9
RGB	199, 174, 169
RGB Percent	78%, 68%, 66%
CMY	0.2196, 0.3176, 0.3372
CMYK	0.00, 0.13, 0.15, 0.22
HSL	10°, 21%, 72%
HSV	10°, 15%, 78%
XYZ	45.8507, 45.2788, 43.8592
YIQ	180.9050, 16.5050, 3.7450

Conversions

Conversions Part 2

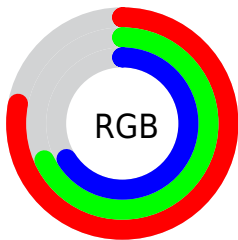
Format	Color
RYB	199, 175, 169
Decimal	13086377
CIELab	73.08, 8.19, 5.87
CIELCh	73, 10.080, 35.640
Yxy	45.2808, 0.3397, 0.3354
Android (android.graphics.Color)	4291276457 (0xFFC7AEA9)
YUV	180.9050, -5.8692, 15.8693
Hunter-Lab	67.2895, 3.8722, 8.4575

Details

The HunterLab color $67.2895, 3.8722, 8.4575$ is a light color, and the websafe version is hex $CC9999$. A complement of this color would be $71.5130, -10.4229, -0.9144$, and the grayscale version is $67.9567, -3.6260, 3.6922$.

A 20% lighter version of the original color is $90.9288, 3.2481, 10.1036$, and $46.0686, 4.0314, 6.7982$ is the 20% darker color. If you saturate the color by 10%, you get $62.1071, 9.4799, 11.2516$, and if you desaturate by 10%, it is $72.7277, -1.4421, 5.5864$.

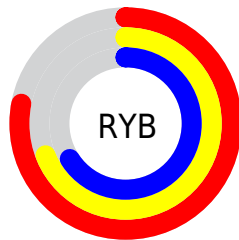
Distribution



Red (78%)

Green (68%)

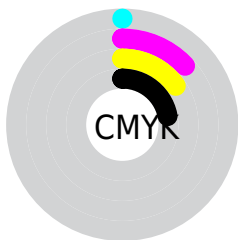
Blue (66%)



Red (78%)

Yellow (69%)

Blue (66%)

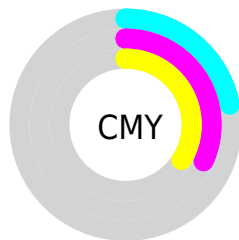


Cyan (0%)

Magenta (13%)

Yellow (15%)

Black (22%)



Cyan (22%)


Magenta (32%)


Yellow (34%)

Brightness & Saturation Gradients

These gradients show how the HunterLab color 67.2895, 3.8722, 8.4575 changes by changing the brightness by 10 percent. The first figure shows a shift by +10% for each color and the second figure -10%.


Similar to the brightness gradients but the following saturation gradients show a change of the HunterLab color 67.2895, 3.8722, 8.4575 by changing the saturation by 10% instead.

 67.2895, 3.8722,
8.4575

 67.2895, 3.8722,
8.4575

191.8097, 0.2263,
17.3737

 56.2838, 4.0455,
7.5601


 91.1820, 3.3576,
10.3079

 45.9523, 4.1591,
6.6773


104.0044, 3.0292,
11.2603

 36.3441, 4.2032,
5.8075


117.3771, 2.6571,
12.2317

 27.5183, 4.1668,
4.9464

131.2784, 2.2442,
13.2221

 19.5517, 4.0347,
4.0859

145.6889, 1.7928,
14.2316

 12.5494, 3.7834,
3.2100

160.5912, 1.3048,

 5.8359, 5.8048,

15.2601

4.0851

175.9695, 0.7822,
16.3075

0.0000, NaN, NaN

0.0000, NaN, NaN

■ 67.2895, 3.8722,
8.4575

■ 67.2895, 3.8722,
8.4575

■ 62.1071, 9.4799,
11.2516

■ 72.7277, -1.4421,
5.5864

■ 57.2154, 15.4019,
13.9308

■ 78.3852, -6.4830,
2.6577

■ 52.6629, 21.6262,
16.4448

■ 84.2369, -11.2832,
-0.3129

■ 48.5058, 28.0987,
18.7203

■ 90.2612, -15.8727,
-3.3160

■ 44.8078, 34.6943,

■ 95.3322, -21.9761,

20.6594

-0.4810

■ 41.6368, 41.1894,
22.1444

■ 39.0567, 47.2506,
23.0594

■ 37.1138, 52.4630,
23.3382

■ 36.3875, 54.5574,
23.3770

Harmonies

Analogous

The Analogous color harmony consists of three colors that are next to each other on the color wheel.



67.2910, 5.5896, 4.4980



67.2895, 3.8722, 8.4575



67.2910, 0.1549, 10.9980

Triad

The Triadic color harmony groups three colors that are evenly spaced from another and form a triangle on the color wheel.



67.2910, 3.8702, 8.4586



67.2910, -11.5907, 7.0961



67.2910, -2.7081, -5.4171

Complementary

The Complementary color scheme is a pair of colors which are on the opposite of each other on the color wheel.



67.2895, 3.8722, 8.4575



71.5130, -10.4229, -0.9144

Split Complementary

Split-complementary colors differ from the complementary color scheme. The scheme consists of three colors, the original color and two neighbors of the complement color.



67.2910, -7.2627, -4.6041



67.2895, 3.8722, 8.4575



67.2910, -12.3102, 2.8168

Square

The Square scheme is like the rectangle color scheme, but the four colors are evenly spaced on the color wheel.



67.2910, 3.8702, 8.4586



67.2910, -8.7536, 10.2498



67.2910, -10.7465, -1.5141



67.2910, 1.7257, -3.6657

Rectangle

The Rectangle color scheme consists of four colors that form a rectangle on the color wheel.



67.2895, 3.8722, 8.4575



67.2910, -2.9092, 11.6454



67.2910, -10.7465, -1.5141



67.2910, -4.2762, -5.4360

Sweetspot

The Sweet Spot groups the original color and five complimentary colors.



67.2910, 3.8702, 8.4586



96.2362, -1.9093, 7.3914



66.6436, 10.5434, -4.1575



44.2813, -0.6572, 3.5462

0.0000, NaN, NaN



46.2646, -2.4686, 2.5136

Same Dimension

The Same Dimension uses a secret algorithm to generate beautiful new colors.



67.2910, 3.8702, 8.4586



86.8148, 7.4442, 12.3844



71.6955, -3.6892, 13.0721



33.0425, 0.3808, 3.2083



29.3285, 43.2685, 18.8296



7.0636, 7.3938, 4.4820

Inverse Universe

The Inverse Universe completely reimagines the original color for something new.



71.5130, -10.4229, -0.9144



93.5534, -15.3922, -2.5805



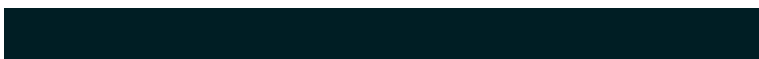
66.9323, -3.0116, -6.6731



34.2852, -3.8211, 0.4504



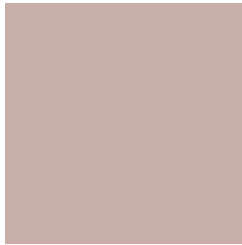
45.0048, -17.5585, -18.3484



10.2043, -4.3578, -3.3472

Previews

White Background



This preview shows how the HunterLab color 67.2895, 3.8722, 8.4575 looks on a white background.

Color Contrast Check

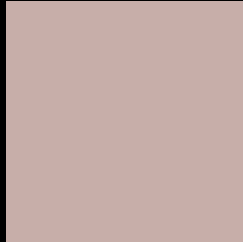
Large Text (above 18pt) WCAG AA × Fail

Any Text WCAG AA × Fail

Large Text (above 18pt) WCAG AAA × Fail

Any Text WCAG AAA × Fail

Black Background



This preview shows how the HunterLab color 67.2895, 3.8722, 8.4575 looks on a black background.

Color Contrast Check

Large Text (above 18pt) WCAG AA ✓ Pass

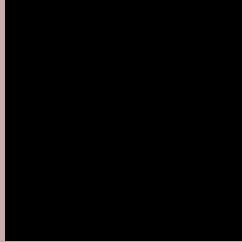
Any Text WCAG AA ✓ Pass

Large Text (above 18pt) WCAG AAA ✓ Pass

Any Text WCAG AAA ✓ Pass

If you want to check with other color combinations, try the [Color Contrast Checker](#).

HunterLab 67.2895, 3.8722, 8.4575 Background



This preview shows how black text looks on a background with the HunterLab color 67.2895, 3.8722, 8.4575.



This preview shows how white text looks on a background with the HunterLab color 67.2895, 3.8722,

8.4575.

Color Blindness Simulation

Color vision deficiency is a very complex topic, and I could not describe the different causes any better than Wikipedia does, so if you want to learn more, you should check out their [article about color blindness](#).

Dichromacy



Original Color

67.2895, 3.8722, 8.4575

Protanopia

67.4782, -2.8203, 7.2367

Deuteranopia

67.2081, 5.0698, 8.3882



Tritanopia

67.3983, 8.1101, 1.2954

Trichromacy



Original Color

67.2895, 3.8722, 8.4575

Protanomaly

67.3288, -0.3574, 7.5535

Deuteranomaly

67.1052, 4.7250, 8.2680

Tritanomaly

67.3952, 6.2747, 4.1197

Monochromacy



Original Color

67.2895, 3.8722, 8.4575

Achromatopsia

67.9762, -3.6270, 3.6933

Achromatomaly

67.6066, -0.5677, 5.1707

CSS Examples

Text

The CSS property to change the color of the text to HunterLab 67.2895, 3.8722, 8.4575 is called "color". The color property can be set on classes, ids or directly on the HTML element.

This example shows how text in the color `rgb(199, 174, 169)` looks like.

```
.text, #text, p{  
    color:rgb(199, 174, 169)  
}
```

If you want to add a text shadow in that color use the text-shadow property, you can generate a text shadow directly with our [CSS Text Shadow Generator](#).

Here you see how black text with a 4 pixel rgb(199, 174, 169) colored shadow looks like.

```
.shadow{ text-shadow: 4px 4px 2px rgb(199, 174, 169) }
```

Border

The CSS property to change the border of an element to HunterLab 67.2895, 3.8722, 8.4575 is called "border". The border property can be set on classes, ids or directly on the HTML element.

This example shows the color as border, it can be applied via the CSS property "border" or "border-color".

```
.border, #border, table{ border:4px solid rgb(199, 174, 169) }
```


If only the border color should be changed use the property `border-color`.

```
.border{ border-color:rgb(199, 174, 169) }
```

If you want to add a box shadow in that color use:

Here you see how a box with a 4 pixel `rgb(199, 174, 169)` colored shadow looks like.

```
.boxshadow{ -moz-box-shadow:4px 4px 4px  
4px rgb(199, 174, 169); -webkit-box-  
shadow:4px 4px 4px 4px rgb(199, 174, 169);  
box-shadow:4px 4px 4px 4px rgb(199, 174,  
169) }
```

Background

The CSS property to change the background color of an element to HunterLab 67.2895, 3.8722, 8.4575 is called "background". The background property can be set on classes, ids or directly on the HTML element.

```
.background, #background, body{  
background: rgb(199, 174, 169) }
```

If only the background color should be changed can be used:

```
.background{ background-color: rgb(199,  
174, 169) }
```

This example shows the color as background, it is applied via the CSS property "background".

To optimize and compress your CSS code, you can use our [online CSS compressor and optimizer](#) based on csstidy. If you want to create a linear or radial gradient as background or border, check our [CSS Gradient Generator](#).

Hey! You found this booklet interesting? Support Converting Colors with the new Membership Option!

The pro membership hides all ads, plus gives you double the colors in the color bucket, and more awesome pro features!

[Learn more, Memberships starting at \\$2.50/m!](#)

**Follow me
on Twitter!**

@ConvertingColor