

# Converting Colors

HunterLab(67.3194, 4.5956,  
0.0008)

Have a look what the booklet for  
HunterLab(67.3194, 4.5956, 0.0008)  
contains.

<b>HunterLab(67.2290, 4.7442, 0.0474)</b> .....	3
<i><b>Conversions</b></i> .....	4
<i><b>Details</b></i> .....	6
<i><b>Harmonies</b></i> .....	12
<i><b>Previews</b></i> .....	24
<i><b>Color Blindness Simulation</b></i> .....	28
<i><b>CSS Examples</b></i> .....	31

# Color

**HunterLab(67.2290, 4.7442,  
0.0474)**

# Conversions

## Conversions Part 1

Format	Color
Hex	C1AEBB
RGB	193, 174, 187
RGB Percent	76%, 68%, 73%
CMY	0.2431, 0.3176, 0.2667
CMYK	0.00, 0.10, 0.03, 0.24
HSL	319°, 13%, 72%
HSV	319°, 10%, 76%
XYZ	46.0980, 45.1974, 53.3080
YIQ	181.1630, 7.1510, 8.0710

# Conversions

## Conversions Part 2

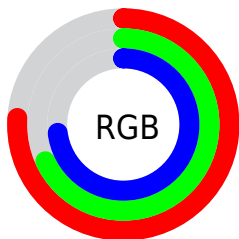
<b>Format</b>	<b>Color</b>
R <sub>Y</sub> B	193, 174, 187
Decimal	12693179
CIE Lab	73.02, 9.13, -4.14
CIE LCh	73, 10.023, 335.579
Yxy	45.1994, 0.3188, 0.3126
Android (android.graphics.Color)	4290883259 (0xFFC1AEBB)
YUV	181.1630, 2.8776, 10.3810
Hunter-Lab	67.2290, 4.7442, 0.0474

# Details

The HunterLab color  $67.2290, 4.7442, 0.0474$  is a light color, and the websafe version is hex `CCCCCC`. A complement of this color would be  $71.0177, -11.7648, 7.5034$ , and the grayscale version is  $68.0319, -3.6300, 3.6963$ .

A 20% lighter version of the original color is  $90.9117, 4.3884, 0.7960$ , and  $45.9666, 4.6409, -0.6860$  is the 20% darker color. If you saturate the color by 10%, you get  $61.6558, 13.6841, -3.7580$ , and if you desaturate by 10%, it is  $73.1211, -4.0331, 4.0314$ .

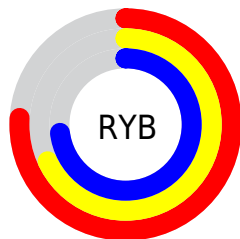
# Distribution



Red (76%)

Green (68%)

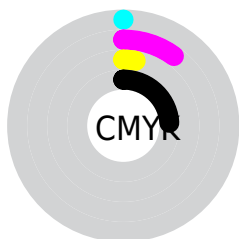
Blue (73%)



Red (76%)

Yellow (68%)

Blue (73%)

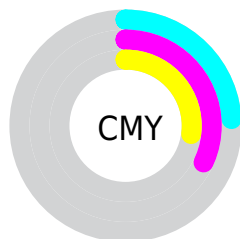


Cyan (0%)

Magenta (10%)

Yellow (3%)

Black (24%)



Cyan (24%)

Magenta (32%)

Yellow (27%)

# Brightness & Saturation Gradients

These gradients show how the HunterLab color 67.2290, 4.7442, 0.0474 changes by changing the brightness by 10 percent. The first figure shows a shift by +10% for each color and the second figure -10%.

Similar to the brightness gradients but the following saturation gradients show a change of the HunterLab color 67.2290, 4.7442, 0.0474 by changing the saturation by 10% instead.



■ 67.2290, 4.7442,  
0.0474

■ 67.2290, 4.7442,  
0.0474

191.7238, 1.4375,  
5.3840

■ 56.2268, 4.8716,  
-0.3531

■ 91.1150, 4.3156,  
0.9832

■ 45.8990, 4.9365,  
-0.7059

103.9344, 4.0272,  
1.5102

■ 36.2948, 4.9286,  
-1.0048

117.3042, 3.6937,  
2.0740

■ 27.4734, 4.8364,  
-1.2431

131.2027, 3.3180,  
2.6725

■ 19.5116, 4.6436,  
-1.4115

145.6105, 2.9025,  
3.3042

■ 12.5149, 4.3255,  
-1.4967

160.5103, 2.4494,

■ 5.7850, 6.5651,

3.9675

-2.6543

175.8861, 1.9605,  
4.6611

0.0000, NaN, NaN

0.0000, NaN, NaN

■ 67.2290, 4.7442,  
0.0474

■ 67.2290, 4.7442,  
0.0474

■ 61.6558, 13.6841,  
-3.7580

■ 73.1211, -4.0331,  
4.0314

■ 56.4502, 22.7380,  
-7.3122

■ 79.2843, -12.6273,  
8.1391

■ 51.6781, 31.7843,  
-10.5030

■ 85.6849, -21.0459,  
12.3380

■ 47.4146, 40.6025,  
-13.1768

■ 92.2944, -29.3049,  
16.6058

■ 43.7426, 48.8373,

■ 93.7510, -30.1389,

-15.1371

15.5180

■ 40.7432, 55.9938,  
-16.1648

■ 93.9236, -29.1476,  
13.0379

■ 38.4786, 61.5055,  
-16.0730

■ 94.1023, -28.1239,  
10.4767

■ 36.9673, 64.9078,  
-14.7912

■ 94.2869, -27.0680,  
7.8345

■ 36.0748, 66.3606,  
-12.5683

■ 94.4777, -25.9799,  
5.1114

# Harmonies

## Analogous

The Analogous color harmony consists of three colors that are next to each other on the color wheel.



67.2305, 1.6888, -3.6293



67.2290, 4.7442, 0.0474



67.2305, 5.5379, 4.4809

# Triad

The Triadic color harmony groups three colors that are evenly spaced from another and form a triangle on the color wheel.



67.2305, 4.7424, 0.0486



67.2305, -4.4576, 11.5836



67.2305, -10.7068, -1.4777

# Complementary

The Complementary color scheme is a pair of colors which are on the opposite of each other on the color wheel.



67.2290, 4.7442, 0.0474



71.0177, -11.7648, 7.5034

# Split Complementary

Split-complementary colors differ from the complementary color scheme. The scheme consists of three colors, the original color and two neighbors of the complement color.



67.2305, -12.2571, 2.8277



67.2290, 4.7442, 0.0474



67.2305, -8.7125, 10.2139

# Square

The Square scheme is like the rectangle color scheme, but the four colors are evenly spaced on the color wheel.



67.2305, 4.7424, 0.0486



67.2305, 0.1445, 10.9500



67.2305, -11.5370, 7.0807



67.2305, -7.2463, -4.5515



# Rectangle

The Rectangle color scheme consists of four colors that form a rectangle on the color wheel.



67.2290, 4.7442, 0.0474



67.2305, 4.6624, 7.2279



67.2305, -11.5370, 7.0807



67.2305, -11.4643, -0.1159

# Sweetspot

The Sweet Spot groups the original color and five complimentary colors.



67.2305, 4.7424, 0.0486



95.2881, -1.6605, 3.6663



66.1754, 1.5723, -4.3987



43.8372, -0.3294, 1.4969



98.8636, -5.2751, 5.3714



45.2661, -2.4153, 2.4594



# Same Dimension

The Same Dimension uses a secret algorithm to generate beautiful new colors.



67.2305, 4.7424, 0.0486



88.1830, 9.1348, -1.1540



66.9462, 3.2171, 4.0971



31.9243, 2.0450, 0.1103



29.4356, 54.2271, -10.5737



6.2161, 11.6199, -3.5384



# Inverse Universe

The Inverse Universe completely reimagines the original color for something new.



67.2305, 4.7424, 0.0486



88.1830, 9.1348, -1.1540



71.2899, -10.2458, 3.6133



31.9243, 2.0450, 0.1103



29.4356, 54.2271, -10.5737

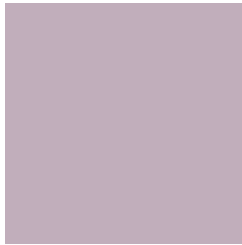


6.2161, 11.6199, -3.5384



# Previews

## White Background



This preview shows how the HunterLab color 67.2290, 4.7442, 0.0474 looks on a white background.

## Color Contrast Check

Large Text (above 18pt) WCAG AA × Fail

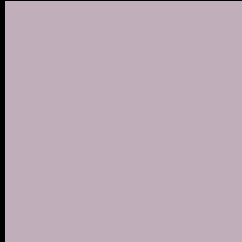
Any Text WCAG AA × Fail

Large Text (above 18pt) WCAG AAA × Fail

Any Text WCAG AAA × Fail



# Black Background



This preview shows how the HunterLab color 67.2290, 4.7442, 0.0474 looks on a black background.

## Color Contrast Check

Large Text (above 18pt) WCAG AA ✓ Pass

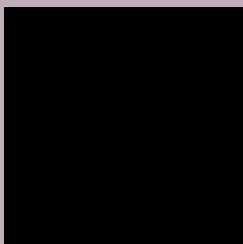
Any Text WCAG AA ✓ Pass

Large Text (above 18pt) WCAG AAA ✓ Pass

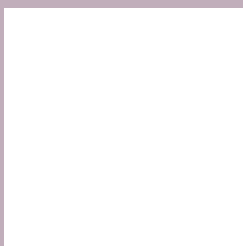
Any Text WCAG AAA ✓ Pass

If you want to check with other color combinations, try the [Color Contrast Checker](#).

## HunterLab 67.2290, 4.7442, 0.0474 Background



This preview shows how black text looks on a background with the HunterLab color 67.2290, 4.7442, 0.0474.



This preview shows how white text looks on a background with the HunterLab color 67.2290, 4.7442,

0.0474.

# Color Blindness Simulation

Color vision deficiency is a very complex topic, and I could not describe the different causes any better than Wikipedia does, so if you want to learn more, you should check out their [article about color blindness](#).

## Dichromacy



### Original Color

67.2290, 4.7442, 0.0474

### Protanopia

67.2769, -0.8948, -1.4919

### Deuteranopia

67.2290, 4.7442, 0.0474



## Tritanopia

67.2610, 4.9153, -0.4067

# Trichromacy



## Original Color

67.2290, 4.7442, 0.0474

## Protanomaly

67.4038, 0.9883, -0.7975

## Deuteranomaly

67.2290, 4.7442, 0.0474

## Tritanomaly

67.2610, 4.9153, -0.4067

# Monochromacy



## Original Color

67.2290, 4.7442, 0.0474

## Achromatopsia

67.9762, -3.6270, 3.6933

## Achromatomaly

67.5085, -0.5424, 2.2431

# CSS Examples

## Text

The CSS property to change the color of the text to HunterLab 67.2290, 4.7442, 0.0474 is called "color". The color property can be set on classes, ids or directly on the HTML element.

This example shows how text in the color `rgb(193, 174, 187)` looks like.

```
.text, #text, p{  
    color:rgb(193, 174, 187)  
}
```

If you want to add a text shadow in that color use the text-shadow property, you can generate a text shadow directly with our [CSS Text Shadow Generator](#).

Here you see how black text with a 4 pixel rgb(193, 174, 187) colored shadow looks like.

```
.shadow{ text-shadow: 4px 4px 2px rgb(193, 174, 187) }
```

## Border

The CSS property to change the border of an element to HunterLab 67.2290, 4.7442, 0.0474 is called "border". The border property can be set on classes, ids or directly on the HTML element.

This example shows the color as border, it can be applied via the CSS property "border" or "border-color".

```
.border, #border, table{ border:4px solid rgb(193, 174, 187) }
```



If only the border color should be changed use the property `border-color`.

```
.border{ border-color:rgb(193, 174, 187) }
```

If you want to add a box shadow in that color use:

Here you see how a box with a 4 pixel `rgb(193, 174, 187)` colored shadow looks like.

```
.boxshadow{ -moz-box-shadow:4px 4px 4px  
4px rgb(193, 174, 187); -webkit-box-  
shadow:4px 4px 4px 4px rgb(193, 174, 187);  
box-shadow:4px 4px 4px 4px rgb(193, 174,  
187) }
```

# Background

The CSS property to change the background color of an element to HunterLab 67.2290, 4.7442, 0.0474 is called "background". The background property can be set on classes, ids or directly on the HTML element.

```
.background, #background, body{  
background: rgb(193, 174, 187) }
```

If only the background color should be changed can be used:

```
.background{ background-color: rgb(193,  
174, 187) }
```

This example shows the color as background, it is applied via the CSS property "background".

To optimize and compress your CSS code, you can use our [online CSS compressor and optimizer](#) based on csstidy. If you want to create a linear or radial gradient as background or border, check our [CSS Gradient Generator](#).

Hey! You found this booklet interesting? Support Converting Colors with the new Membership Option!

The pro membership hides all ads, plus gives you double the colors in the color bucket, and more awesome pro features!

**[Learn more, Memberships starting at \\$2.50/m!](#)**

**Follow me  
on Twitter!**

@ConvertingColor