

Converting Colors

HunterLab(67.3506, 10.8287,
12.4133)

Have a look what the booklet for
HunterLab(67.3506, 10.8287,
12.4133) contains.

HunterLab(67.3506, 10.8287, 12.4133)	3
<i>Conversions</i>	4
<i>Details</i>	6
<i>Harmonies</i>	12
<i>Previews</i>	24
<i>Color Blindness Simulation</i>	28
<i>CSS Examples</i>	31

Color

**HunterLab(67.3506, 10.8287,
12.4133)**

Conversions

Conversions Part 1

Format	Color
Hex	D7A9A0
RGB	215, 169, 160
RGB Percent	84%, 66%, 63%
CMY	0.1569, 0.3372, 0.3725
CMYK	0.00, 0.21, 0.26, 0.16
HSL	10°, 41%, 74%
HSV	10°, 26%, 84%
XYZ	48.5574, 45.3610, 39.4540
YIQ	181.7280, 30.3050, 6.9530

Conversions

Conversions Part 2

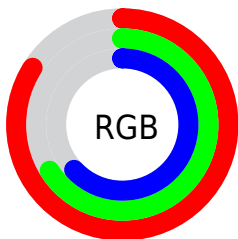
Format	Color
R _{YB}	215, 171, 160
Decimal	14133664
CIE Lab	73.13, 15.53, 11.09
CIE LCh	73, 19.080, 35.526
Yxy	45.3631, 0.3641, 0.3401
Android (android.graphics.Color)	4292323744 (0xFFD7A9A0)
YUV	181.7280, -10.7119, 29.1795
Hunter-Lab	67.3506, 10.8287, 12.4133

Details

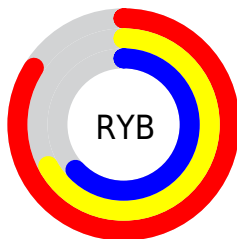
The HunterLab color **67.3506, 10.8287, 12.4133** is a light color, and the websafe version is hex **CC9999**. A complement of this color would be **75.1804, -15.6203, -4.6493**, and the grayscale version is **68.3166, -3.6452, 3.7118**.

A 20% lighter version of the original color is **89.1502, 4.4894, 12.2560**, and **46.0409, 10.2263, 9.9178** is the 20% darker color. If you saturate the color by 10%, you get **61.9983, 17.3744, 15.3305**, and if you desaturate by 10%, it is **73.0332, 4.6221, 9.3746**.

Distribution



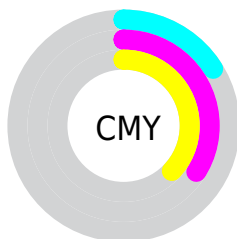
- Red (84%)
- Green (66%)
- Blue (63%)



- Red (84%)
- Yellow (67%)
- Blue (63%)



- Cyan (0%)
- Magenta (21%)
- Yellow (26%)
- Black (16%)





- Cyan (16%)
- Magenta (34%)
- Yellow (37%)

Brightness & Saturation Gradients


These gradients show how the HunterLab color 67.3506, 10.8287, 12.4133 changes by changing the brightness by 10 percent. The first figure shows a shift by +10% for each color and the second figure -10%.


Similar to the brightness gradients but the following saturation gradients show a change of the HunterLab color 67.3506, 10.8287, 12.4133 by changing the saturation by 10% instead.


 67.3506, 10.8287,
12.4133


 67.3506, 10.8287,
12.4133


191.8964, 9.7914,
23.3136

 56.3414, 10.6497,
11.2330


 91.2497, 10.9699,
14.7787

 46.0062, 10.3925,
10.0452


 104.0751, 10.9496,
15.9683

 36.3939, 10.0435,
8.8428


117.4507, 10.8742,
17.1658

 27.5637, 9.5878,
7.6128

131.3548, 10.7479,
18.3728

 19.5922, 9.0056,
6.3334

145.7680, 10.5737,
19.5902

 12.5844, 8.2692,
5.0041

160.6729, 10.3546,

 5.8869, 11.1798,

20.8191

4.1208

176.0538, 10.0931,
22.0601

0.0000, NaN, NaN

0.0000, NaN, NaN

■ 67.3506, 10.8287,
12.4133

■ 67.3506, 10.8287,
12.4133

■ 61.9983, 17.3744,
15.3305

■ 73.0332, 4.6221,
9.3746

■ 57.0253, 24.2522,
18.0649

■ 78.9970, -1.2527,
6.2498

■ 52.4964, 31.3930,
20.5347

■ 85.2072, -6.8268,
3.0654

■ 48.4835, 38.6477,
22.6291

■ 91.6340, -12.1336,
-0.1625

■ 45.0628, 45.7538,

■ 96.5335, -17.6136,

24.2157

1.0679

■ 42.3046, 52.3258,
25.1670

■ 40.2569, 57.8959,
25.4178

■ 39.5738, 59.8889,
25.4337

Harmonies

Analogous

The Analogous color harmony consists of three colors that are next to each other on the color wheel.



67.3522, 14.2002, 5.2072



67.3506, 10.8287, 12.4133



67.3522, 3.6019, 16.8036

Triad

The Triadic color harmony groups three colors that are evenly spaced from another and form a triangle on the color wheel.



67.3522, 10.8262, 12.4144



67.3522, -18.4030, 10.0365



67.3522, -1.9500, -14.5285

Complementary

The Complementary color scheme is a pair of colors which are on the opposite of each other on the color wheel.



67.3506, 10.8287, 12.4133



75.1804, -15.6203, -4.6493

Split Complementary

Split-complementary colors differ from the complementary color scheme. The scheme consists of three colors, the original color and two neighbors of the complement color.



67.3522, -10.5064, -12.8028



67.3506, 10.8287, 12.4133



67.3522, -19.7195, 2.0878

Square

The Square scheme is like the rectangle color scheme, but the four colors are evenly spaced on the color wheel.



67.3522, 10.8262, 12.4144



67.3522, -13.2075, 15.5599



67.3522, -16.9008, -6.4400



67.3522, 6.5838, -10.8914

Rectangle

The Rectangle color scheme consists of four colors that form a rectangle on the color wheel.



67.3506, 10.8287, 12.4133



67.3522, -2.2641, 17.8963



67.3522, -16.9008, -6.4400



67.3522, -4.9203, -14.5612

Sweetspot

The Sweet Spot groups the original color and five complimentary colors.



67.3522, 10.8262, 12.4144



93.9942, 0.2240, 8.5357



66.3943, 23.1473, -11.2552



42.9736, 0.5997, 4.2165

0.0000, NaN, NaN



46.2646, -2.4686, 2.5136

Same Dimension

The Same Dimension uses a secret algorithm to generate beautiful new colors.



67.3522, 10.8262, 12.4144



77.9366, 17.6256, 17.1053



75.0684, -2.8399, 19.9392



35.7015, 0.4492, 3.4722



30.7737, 45.7768, 19.7640



8.2174, 9.2541, 5.2255

Inverse Universe

The Inverse Universe completely reimagines the original color for something new.



75.1804, -15.6203, -4.6493



89.4334, -21.3608, -7.9858



66.8737, -2.4299, -15.8347



37.0750, -4.1644, 0.4838



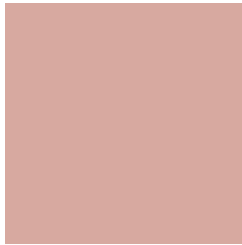
47.4799, -18.6492, -19.0875



12.0587, -5.1003, -4.0623

Previews

White Background



This preview shows how the HunterLab color 67.3506, 10.8287, 12.4133 looks on a white background.

Color Contrast Check

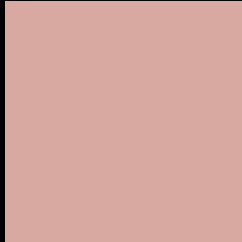
Large Text (above 18pt) WCAG AA × Fail

Any Text WCAG AA × Fail

Large Text (above 18pt) WCAG AAA × Fail

Any Text WCAG AAA × Fail

Black Background



This preview shows how the HunterLab color 67.3506, 10.8287, 12.4133 looks on a black background.

Color Contrast Check

Large Text (above 18pt) WCAG AA ✓ Pass

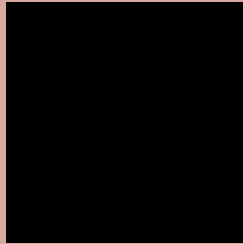
Any Text WCAG AA ✓ Pass

Large Text (above 18pt) WCAG AAA ✓ Pass

Any Text WCAG AAA ✓ Pass

If you want to check with other color combinations, try the [Color Contrast Checker](#).

HunterLab 67.3506, 10.8287, 12.4133 Background



This preview shows how black text looks on a background with the HunterLab color 67.3506, 10.8287, 12.4133.



This preview shows how white text looks on a background with the HunterLab color 67.3506, 10.8287, 12.4133.

Color Blindness Simulation

Color vision deficiency is a very complex topic, and I could not describe the different causes any better than Wikipedia does, so if you want to learn more, you should check out their [article about color blindness](#).

Dichromacy



Original Color

67.3506, 10.8287, 12.4133

Protanopia

67.3765, -3.5619, 10.1298

Deuteranopia

67.3569, 5.0312, 12.7205



Tritanopia

67.2895, 15.9088, 4.1643

Trichromacy



Original Color

67.3506, 10.8287, 12.4133

Protanomaly

67.2121, 1.8005, 10.8811

Deuteranomaly

67.5008, 6.9677, 12.9047

Tritanomaly

67.2420, 13.9516, 7.2644

Monochromacy



Original Color

67.3506, 10.8287, 12.4133

Achromatopsia

68.3947, -3.6494, 3.7160

Achromatomaly

67.8009, 1.4270, 6.7859

CSS Examples

Text

The CSS property to change the color of the text to HunterLab 67.3506, 10.8287, 12.4133 is called "color". The color property can be set on classes, ids or directly on the HTML element.

This example shows how text in the color `rgb(215, 169, 160)` looks like.

```
.text, #text, p{  
    color:rgb(215, 169, 160)  
}
```

If you want to add a text shadow in that color use the text-shadow property, you can generate a text shadow directly with our [CSS Text Shadow Generator](#).

Here you see how black text with a 4 pixel rgb(215, 169, 160) colored shadow looks like.

```
.shadow{ text-shadow: 4px 4px 2px rgb(215, 169, 160) }
```

Border

The CSS property to change the border of an element to HunterLab 67.3506, 10.8287, 12.4133 is called "border". The border property can be set on classes, ids or directly on the HTML element.

This example shows the color as border, it can be applied via the CSS property "border" or "border-color".

```
.border, #border, table{ border:4px solid rgb(215, 169, 160) }
```


If only the border color should be changed use the property `border-color`.

```
.border{ border-color:rgb(215, 169, 160) }
```

If you want to add a box shadow in that color use:

Here you see how a box with a 4 pixel `rgb(215, 169, 160)` colored shadow looks like.

```
.boxshadow{ -moz-box-shadow:4px 4px 4px  
4px rgb(215, 169, 160); -webkit-box-  
shadow:4px 4px 4px 4px rgb(215, 169, 160);  
box-shadow:4px 4px 4px 4px rgb(215, 169,  
160) }
```

Background

The CSS property to change the background color of an element to HunterLab 67.3506, 10.8287, 12.4133 is called "background". The background property can be set on classes, ids or directly on the HTML element.

```
.background, #background, body{  
background: rgb(215, 169, 160) }
```

If only the background color should be changed can be used:

```
.background{ background-color: rgb(215,  
169, 160) }
```

This example shows the color as background, it is applied via the CSS property "background".

To optimize and compress your CSS code, you can use our [online CSS compressor and optimizer](#) based on csstidy. If you want to create a linear or radial gradient as background or border, check our [CSS Gradient Generator](#).

Hey! You found this booklet interesting? Support Converting Colors with the new Membership Option!

The pro membership hides all ads, plus gives you double the colors in the color bucket, and more awesome pro features!

[Learn more, Memberships starting at \\$2.50/m!](#)

**Follow me
on Twitter!**

@ConvertingColor