

Converting Colors

HunterLab(67.4558, 38.4274,
0.9620)

Have a look what the booklet for
HunterLab(67.4558, 38.4274,
0.9620) contains.

HunterLab(67.3845, 38.7413, 0.8340)	3
<i>Conversions</i>	4
<i>Details</i>	6
<i>Harmonies</i>	12
<i>Previews</i>	24
<i>Color Blindness Simulation</i>	28
<i>CSS Examples</i>	31

Color

**HunterLab(67.3845, 38.7413,
0.8340)**

Conversions

Conversions Part 1

Format	Color
Hex	FA95BB
RGB	250, 149, 187
RGB Percent	98%, 58%, 73%
CMY	0.0196, 0.4157, 0.2667
CMYK	0.00, 0.40, 0.25, 0.02
HSL	337°, 91%, 78%
HSV	337°, 40%, 98%
XYZ	59.1414, 45.4067, 52.6610
YIQ	183.5310, 47.9980, 33.2300

Conversions

Conversions Part 2

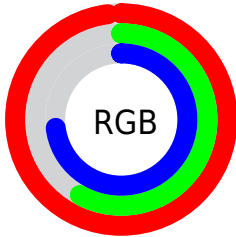
Format	Color
R_{YB}	250, 149, 187
Decimal	16422331
CIE _{Lab}	73.16, 42.55, -3.27
CIE _{LCh}	73, 42.679, 355.610
Yxy	45.4089, 0.3762, 0.2888
Android (android.graphics.Color)	4294612411 (0xFFFA95BB)
YUV	183.5310, 1.7102, 58.2933
Hunter-Lab	67.3845, 38.7413, 0.8340

Details

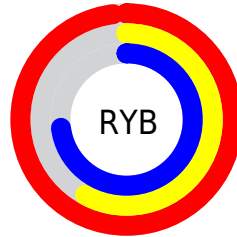
The HunterLab color **67.3845, 38.7413, 0.8340** is a light color, and the websafe version is hex **FF99CC**. A complement of this color would be **89.1714, -39.0154, 12.8466**, and the grayscale version is **69.0165, -3.6825, 3.7498**.

A 20% lighter version of the original color is **84.4948, 19.5520, -7.0924**, and **46.0036, 35.7881, -0.0944** is the 20% darker color. If you saturate the color by 10%, you get **61.3977, 49.6120, 1.2997**, and if you desaturate by 10%, it is **74.0886, 27.6542, 1.1245**.

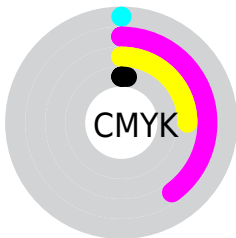
Distribution



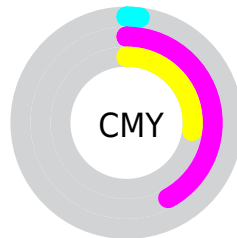
- Red (98%)
- Green (58%)
- Blue (73%)



- Red (98%)
- Yellow (58%)
- Blue (73%)



- Cyan (0%)
- Magenta (40%)
- Yellow (25%)
- Black (2%)



- Cyan (2%)
- Magenta (42%)
- Yellow (27%)

Brightness & Saturation Gradients

These gradients show how the HunterLab color 67.3845, 38.7413, 0.8340 changes by changing the brightness by 10 percent. The first figure shows a shift by +10% for each color and the second figure -10%.

Similar to the brightness gradients but the following saturation gradients show a change of the HunterLab color 67.3845, 38.7413, 0.8340 by changing the saturation by 10% instead.

67.3845, 38.7413,
0.8340

67.3845, 38.7413,
0.8340

191.9445, 46.6029,
6.4752

56.3734, 37.4213,
0.3925

91.2873, 41.0603,
1.8469

46.0361, 35.9903,
-0.0041

104.1143, 42.0807,
2.4100

36.4216, 34.4391,
-0.3496

117.4916, 43.0162,
3.0084

27.5889, 32.7681,
-0.6379

131.3972, 43.8727,
3.6403

19.6147, 30.9991,
-0.8606

145.8119, 44.6552,
4.3043

12.6038, 29.2281,
-1.0052

160.7183, 45.3685,

5.9150, 34.6181,

4.9988

-1.9672

176.1006, 46.0165,
5.7229

0.0000, INF, NaN

0.0000, NaN, NaN

■ 67.3845, 38.7413,
0.8340

■ 67.3845, 38.7413,
0.8340

■ 61.3977, 49.6120,
1.2997

■ 74.0886, 27.6542,
1.1245

■ 56.2520, 59.8129,
2.6464

■ 81.3916, 16.6288,
2.0307

■ 52.0791, 68.6619,
4.9513

■ 89.2004, 5.7940,
3.4334

■ 48.9819, 75.3577,
8.1696

■ 97.4386, -4.8010,
5.2336

■ 46.9918, 79.2514,

■ 99.5309, -6.9713,

12.0796

4.8512

 45.9708, 80.4863,
16.0625

Harmonies

Analogous

The Analogous color harmony consists of three colors that are next to each other on the color wheel.



67.3861, 30.8007, -20.1737



67.3845, 38.7413, 0.8340



67.3861, 34.3019, 17.5253

Triad

The Triadic color harmony groups three colors that are evenly spaced from another and form a triangle on the color wheel.



67.3861, 38.7381, 0.8355



67.3861, -19.2853, 28.8438



67.3861, -23.7912, -33.6052

Complementary

The Complementary color scheme is a pair of colors which are on the opposite of each other on the color wheel.



67.3845, 38.7413, 0.8340



89.1714, -39.0154, 12.8466

Split Complementary

Split-complementary colors differ from the complementary color scheme. The scheme consists of three colors, the original color and two neighbors of the complement color.



67.3861, -34.6211, -13.9482



67.3845, 38.7413, 0.8340



67.3861, -32.2381, 21.0915

Square

The Square scheme is like the rectangle color scheme, but the four colors are evenly spaced on the color wheel.



67.3861, 38.7381, 0.8355



67.3861, -0.6591, 30.7168



67.3861, -37.5263, 6.3827



67.3861, -6.4897, -43.3816

Rectangle

The Rectangle color scheme consists of four colors that form a rectangle on the color wheel.



67.3845, 38.7413, 0.8340



67.3861, 25.1687, 24.7628



67.3861, -37.5263, 6.3827



67.3861, -28.2273, -27.7004

Sweetspot

The Sweet Spot groups the original color and five complimentary colors.



67.3861, 38.7381, 0.8355



89.9097, 7.6996, 3.2499



65.0310, 37.0247, -41.7385



41.1053, 4.2288, 1.4093

0.0000, NaN, NaN



46.2646, -2.4686, 2.5136

Same Dimension

The Same Dimension uses a secret algorithm to generate beautiful new colors.



67.3861, 38.7381, 0.8355



64.1609, 48.1714, 1.1412



69.2172, 27.3021, 18.7712



41.6332, 2.2352, 1.6578



33.5191, 58.7593, 11.1414



10.2977, 18.2367, 1.9902

Inverse Universe

The Inverse Universe completely reimagines the original color for something new.



67.3861, 38.7381, 0.8355



64.1609, 48.1714, 1.1412



86.3529, -26.4944, -9.3517



41.6332, 2.2352, 1.6578



33.5191, 58.7593, 11.1414



10.2977, 18.2367, 1.9902

Previews

White Background



This preview shows how the HunterLab color 67.3845, 38.7413, 0.8340 looks on a white background.

Color Contrast Check

Large Text (above 18pt) WCAG AA × Fail

Any Text WCAG AA × Fail

Large Text (above 18pt) WCAG AAA × Fail

Any Text WCAG AAA × Fail

Black Background



This preview shows how the HunterLab color 67.3845, 38.7413, 0.8340 looks on a black background.

Color Contrast Check

Large Text (above 18pt) WCAG AA ✓ Pass

Any Text WCAG AA ✓ Pass

Large Text (above 18pt) WCAG AAA ✓ Pass

Any Text WCAG AAA ✓ Pass

If you want to check with other color combinations, try the [Color Contrast Checker](#).

HunterLab 67.3845, 38.7413, 0.8340 Background



This preview shows how black text looks on a background with the HunterLab color 67.3845, 38.7413, 0.8340.



This preview shows how white text looks on a background with the HunterLab color 67.3845, 38.7413,

0.8340.

Color Blindness Simulation

Color vision deficiency is a very complex topic, and I could not describe the different causes any better than Wikipedia does, so if you want to learn more, you should check out their [article about color blindness](#).

Dichromacy



Original Color

67.3845, 38.7413, 0.8340

Protanopia

67.7334, 0.1727, -8.8178

Deuteranopia

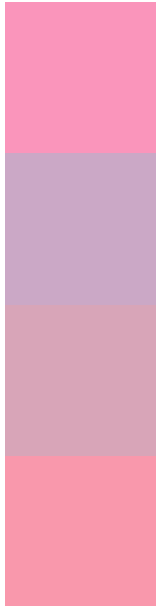
67.3994, 5.0643, 2.2103



Tritanopia

67.3938, 32.5111, 11.1982

Trichromacy



Original Color

67.3845, 38.7413, 0.8340

Protanomaly

66.9171, 13.1328, -5.8727

Deuteranomaly

67.0596, 16.8696, 1.5237

Tritanomaly

67.5091, 34.5329, 7.9254

Monochromacy



Original Color

67.3845, 38.7413, 0.8340

Achromatopsia

69.2330, -3.6941, 3.7616

Achromatomaly

67.8517, 11.0399, 1.8958

CSS Examples

Text

The CSS property to change the color of the text to HunterLab 67.3845, 38.7413, 0.8340 is called "color". The color property can be set on classes, ids or directly on the HTML element.

This example shows how text in the color `rgb(250, 149, 187)` looks like.

```
.text, #text, p{  
    color:rgb(250, 149, 187)  
}
```

If you want to add a text shadow in that color use the text-shadow property, you can generate a text shadow directly with our [CSS Text Shadow Generator](#).

Here you see how black text with a 4 pixel rgb(250, 149, 187) colored shadow looks like.

```
.shadow{ text-shadow: 4px 4px 2px rgb(250, 149, 187) }
```

Border

The CSS property to change the border of an element to HunterLab 67.3845, 38.7413, 0.8340 is called "border". The border property can be set on classes, ids or directly on the HTML element.

This example shows the color as border, it can be applied via the CSS property "border" or "border-color".

```
.border, #border, table{ border:4px solid rgb(250, 149, 187) }
```


If only the border color should be changed use the property `border-color`.

```
.border{ border-color:rgb(250, 149, 187) }
```

If you want to add a box shadow in that color use:

Here you see how a box with a 4 pixel `rgb(250, 149, 187)` colored shadow looks like.

```
.boxshadow{ -moz-box-shadow:4px 4px 4px  
4px rgb(250, 149, 187); -webkit-box-  
shadow:4px 4px 4px 4px rgb(250, 149, 187);  
box-shadow:4px 4px 4px 4px rgb(250, 149,  
187) }
```

Background

The CSS property to change the background color of an element to HunterLab 67.3845, 38.7413, 0.8340 is called "background". The background property can be set on classes, ids or directly on the HTML element.

```
.background, #background, body{  
background: rgb(250, 149, 187) }
```

If only the background color should be changed can be used:

```
.background{ background-color: rgb(250,  
149, 187) }
```

This example shows the color as background, it is applied via the CSS property "background".

To optimize and compress your CSS code, you can use our [online CSS compressor and optimizer](#) based on csstidy. If you want to create a linear or radial gradient as background or border, check our [CSS Gradient Generator](#).

Hey! You found this booklet interesting? Support Converting Colors with the new Membership Option!

The pro membership hides all ads, plus gives you double the colors in the color bucket, and more awesome pro features!

[Learn more, Memberships starting at \\$2.50/m!](#)

**Follow me
on Twitter!**

@ConvertingColor