

Converting Colors

HunterLab(67.5650, -1.6715,
11.4300)

Have a look what the booklet for
HunterLab(67.5650, -1.6715,
11.4300) contains.

HunterLab(67.5691, -1.5334, 11.6148)	3
<i>Conversions</i>	4
<i>Details</i>	6
<i>Harmonies</i>	12
<i>Previews</i>	24
<i>Color Blindness Simulation</i>	28
<i>CSS Examples</i>	31

Color

**HunterLab(67.5691, -1.5334,
11.6148)**

Conversions

Conversions Part 1

Format	Color
Hex	C0B2A2
RGB	192, 178, 162
RGB Percent	75%, 70%, 64%
CMY	0.2471, 0.3019, 0.3647
CMYK	0.00, 0.07, 0.16, 0.25
HSL	32°, 19%, 69%
HSV	32°, 16%, 75%
XYZ	44.1802, 45.6558, 40.6663
YIQ	180.3620, 13.4800, -2.0080

Conversions

Conversions Part 2

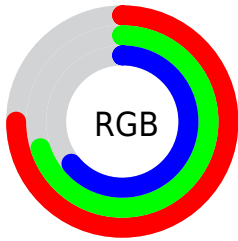
Format	Color
RYB	188, 192, 162
Decimal	12628642
CIELab	73.32, 2.31, 9.97
CIELCh	73, 10.237, 76.972
Yxy	45.6579, 0.3385, 0.3499
Android (android.graphics.Color)	4290818722 (0xFFC0B2A2)
YUV	180.3620, -9.0525, 10.2065
Hunter-Lab	67.5691, -1.5334, 11.6148

Details

The HunterLab color **67.5691, -1.5334, 11.6148** is a light color, and the websafe version is hex **CCCCCC**. A complement of this color would be **65.2204, -4.8251, -5.2310**, and the grayscale version is **67.7434, -3.6146, 3.6806**.

A 20% lighter version of the original color is **91.6489, -2.5982, 13.9603**, and **46.0394, -0.5868, 9.3614** is the 20% darker color. If you saturate the color by 10%, you get **64.4803, 0.3214, 15.9158**, and if you desaturate by 10%, it is **70.7642, -3.1075, 6.8316**.

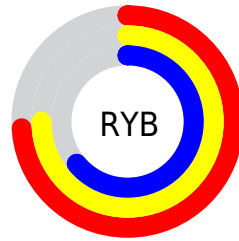
Distribution



Red (75%)

Green (70%)

Blue (64%)



Red (74%)

Yellow (75%)

Blue (64%)

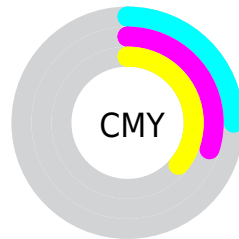


Cyan (0%)

Magenta (7%)

Yellow (16%)

Black (25%)



Cyan (25%)

Magenta (30%)

Yellow (36%)

Brightness & Saturation Gradients

These gradients show how the HunterLab color 67.5691, -1.5334, 11.6148 changes by changing the brightness by 10 percent. The first figure shows a shift by +10% for each color and the second figure -10%.

Similar to the brightness gradients but the following saturation gradients show a change of the HunterLab color 67.5691, -1.5334, 11.6148 by changing the saturation by 10% instead.

■ 67.5691, -1.5334,
11.6148

■ 67.5691, -1.5334,
11.6148

192.2060, -7.3366,
22.0869

■ 56.5473, -1.0646,
10.4960

■ 91.4914, -2.5951,
13.8684

■ 46.1986, -0.6375,
9.3750

■ 104.3276, -3.1791,
15.0067

■ 36.5719, -0.2583,
8.2456

117.7136, -3.7967,
16.1554

■ 27.7260, 0.0675,
7.0970

131.6277, -4.4461,
17.3156

■ 19.7371, 0.3322,
5.9107

146.0505, -5.1260,
18.4883

■ 12.7094, 0.5239,
4.6575

160.9647, -5.8351,

■ 6.0653, 1.3339,

19.6741

4.2457

176.3546, -6.5723,
20.8735

0.0000, NaN, NaN

0.0000, NaN, NaN

■ 67.5691, -1.5334,
11.6148

■ 67.5691, -1.5334,
11.6148

■ 64.4803, 0.3214,
15.9158

■ 70.7642, -3.1075,
6.8316

■ 61.5015, 2.4814,
19.6844

■ 74.0535, -4.4144,
1.6072

■ 58.6428, 4.9609,
22.8728

■ 77.4318, -5.4756,
-4.0172

■ 55.9137, 7.7721,
25.4320

■ 80.8929, -6.3100,
-10.0053

■ 53.3238, 10.9203,

■ 84.3157, -7.5719,

27.3179

-14.7049

■ 50.8826, 14.4001,
28.4965

■ 87.1777, -12.1511,
-10.8374

■ 48.5991, 18.1910,
28.9550

■ 90.0914, -16.6743,
-7.0402

■ 46.4800, 22.2494,
28.7225

■ 93.0540, -21.1433,
-3.3107

■ 45.5991, 24.0604,
28.5192

■ 94.8402, -23.7796,
-1.1210

Harmonies

Analogous

The Analogous color harmony consists of three colors that are next to each other on the color wheel.



67.5706, 2.7444, 9.7330



67.5691, -1.5334, 11.6148



67.5706, -6.2576, 11.4801

Triad

The Triadic color harmony groups three colors that are evenly spaced from another and form a triangle on the color wheel.



67.5706, -1.5354, 11.6158



67.5706, -12.1344, 1.0892



67.5706, 3.2064, -2.5307

Complementary

The Complementary color scheme is a pair of colors which are on the opposite of each other on the color wheel.



67.5691, -1.5334, 11.6148



65.2204, -4.8251, -5.2310

Split Complementary

Split-complementary colors differ from the complementary color scheme. The scheme consists of three colors, the original color and two neighbors of the complement color.



67.5706, -0.9190, -5.1818



67.5691, -1.5334, 11.6148



67.5706, -9.7360, -2.9948

Square

The Square scheme is like the rectangle color scheme, but the four colors are evenly spaced on the color wheel.



67.5706, -1.5354, 11.6158



67.5706, -12.2891, 5.6097



67.5706, -5.6580, -5.3573



67.5706, 5.5326, 1.6877

Rectangle

The Rectangle color scheme consists of four colors that form a rectangle on the color wheel.



67.5691, -1.5334, 11.6148



67.5706, -9.0211, 10.2651



67.5706, -5.6580, -5.3573



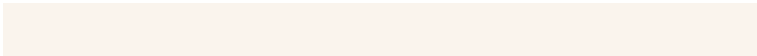
67.5706, 1.9790, -3.6471

Sweetspot

The Sweet Spot groups the original color and five complimentary colors.



67.5706, -1.5354, 11.6158



95.4921, -4.2876, 8.8278



63.3895, 8.7324, 0.7948



44.0865, -1.9227, 4.3106



98.8636, -5.2751, 5.3714



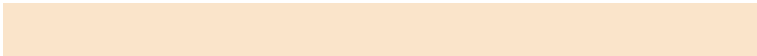
45.2661, -2.4153, 2.4594

Same Dimension

The Same Dimension uses a secret algorithm to generate beautiful new colors.



67.5706, -1.5354, 11.6158



89.4080, -1.1929, 17.8449



71.6831, -8.7643, 15.7441



33.0872, -1.2131, 4.1287



37.6145, 19.2683, 23.5152



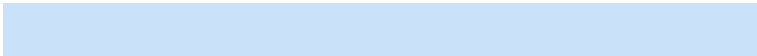
8.6502, 2.2627, 5.3698

Inverse Universe

The Inverse Universe completely reimagines the original color for something new.



65.2204, -4.8251, -5.2310



85.5159, -6.6296, -10.0703



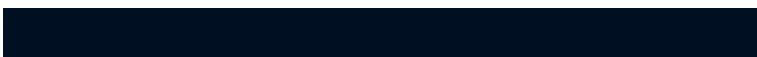
61.1830, 2.4506, -10.5830



32.4119, -2.1606, -0.7088



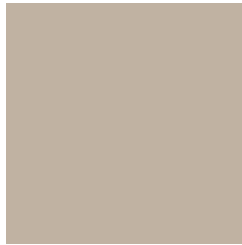
27.5432, 9.5743, -55.0949



6.8235, -0.0622, -8.3945

Previews

White Background



This preview shows how the HunterLab color 67.5691, -1.5334, 11.6148 looks on a white background.

Color Contrast Check

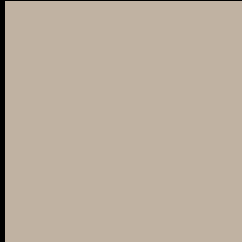
Large Text (above 18pt) WCAG AA × Fail

Any Text WCAG AA × Fail

Large Text (above 18pt) WCAG AAA × Fail

Any Text WCAG AAA × Fail

Black Background



This preview shows how the HunterLab color 67.5691, -1.5334, 11.6148 looks on a black background.

Color Contrast Check

Large Text (above 18pt) WCAG AA ✓ Pass

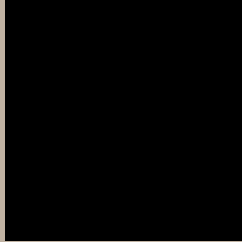
Any Text WCAG AA ✓ Pass

Large Text (above 18pt) WCAG AAA ✓ Pass

Any Text WCAG AAA ✓ Pass

If you want to check with other color combinations, try the [Color Contrast Checker](#).

HunterLab 67.5691, -1.5334, 11.6148 Background



This preview shows how black text looks on a background with the HunterLab color 67.5691, -1.5334, 11.6148.



This preview shows how white text looks on a background with the HunterLab color 67.5691, -1.5334,

Color Blindness Simulation

Color vision deficiency is a very complex topic, and I could not describe the different causes any better than Wikipedia does, so if you want to learn more, you should check out their [article about color blindness](#).

Dichromacy



Original Color

67.5691, -1.5334, 11.6148

Protanopia

67.4161, -3.5313, 11.0060

Deuteranopia

67.6416, 4.7291, 11.3911



Tritanopia

67.4574, 5.5728, -0.1520

Trichromacy



Original Color

67.5691, -1.5334, 11.6148

Protanomaly

67.6043, -2.8780, 11.2182

Deuteranomaly

67.5157, 2.8300, 11.2236

Tritanomaly

67.3676, 3.2345, 4.0340

Monochromacy



Original Color

67.5691, -1.5334, 11.6148

Achromatopsia

67.5582, -3.6047, 3.6706

Achromatomaly

67.4149, -2.9826, 6.7182

CSS Examples

Text

The CSS property to change the color of the text to HunterLab 67.5691, -1.5334, 11.6148 is called "color". The color property can be set on classes, ids or directly on the HTML element.

This example shows how text in the color `rgb(192, 178, 162)` looks like.

```
.text, #text, p{  
    color:rgb(192, 178, 162)  
}
```

If you want to add a text shadow in that color use the text-shadow property, you can generate a text shadow directly with our [CSS Text Shadow Generator](#).

Here you see how black text with a 4 pixel rgb(192, 178, 162) colored shadow looks like.

```
.shadow{ text-shadow: 4px 4px 2px rgb(192, 178, 162) }
```

Border

The CSS property to change the border of an element to HunterLab 67.5691, -1.5334, 11.6148 is called "border". The border property can be set on classes, ids or directly on the HTML element.

This example shows the color as border, it can be applied via the CSS property "border" or "border-color".

```
.border, #border, table{ border:4px solid rgb(192, 178, 162) }
```


If only the border color should be changed use the property `border-color`.

```
.border{ border-color:rgb(192, 178, 162) }
```

If you want to add a box shadow in that color use:

Here you see how a box with a 4 pixel `rgb(192, 178, 162)` colored shadow looks like.

```
.boxshadow{ -moz-box-shadow:4px 4px 4px  
4px rgb(192, 178, 162); -webkit-box-  
shadow:4px 4px 4px 4px rgb(192, 178, 162);  
box-shadow:4px 4px 4px 4px rgb(192, 178,  
162) }
```

Background

The CSS property to change the background color of an element to HunterLab 67.5691, -1.5334, 11.6148 is called "background". The background property can be set on classes, ids or directly on the HTML element.

```
.background, #background, body{  
background: rgb(192, 178, 162) }
```

If only the background color should be changed can be used:

```
.background{ background-color: rgb(192,  
178, 162) }
```

This example shows the color as background, it is applied via the CSS property "background".

To optimize and compress your CSS code, you can use our [online CSS compressor and optimizer](#) based on csstidy. If you want to create a linear or radial gradient as background or border, check our [CSS Gradient Generator](#).

Hey! You found this booklet interesting? Support Converting Colors with the new Membership Option!

The pro membership hides all ads, plus gives you double the colors in the color bucket, and more awesome pro features!

[Learn more, Memberships starting at \\$2.50/m!](#)

**Follow me
on Twitter!**

@ConvertingColor