

Converting Colors

HunterLab(67.6240, 12.4820,
6.7752)

Have a look what the booklet for
HunterLab(67.6240, 12.4820,
6.7752) contains.

HunterLab(67.6225, 12.4804, 6.7771)	3
<i>Conversions</i>	4
<i>Details</i>	6
<i>Harmonies</i>	12
<i>Previews</i>	24
<i>Color Blindness Simulation</i>	28
<i>CSS Examples</i>	31

Color

**HunterLab(67.6225, 12.4804,
6.7771)**

Conversions

Conversions Part 1

Format	Color
Hex	D6A9AE
RGB	214, 169, 174
RGB Percent	84%, 66%, 68%
CMY	0.1608, 0.3372, 0.3176
CMYK	0.00, 0.21, 0.19, 0.16
HSL	353°, 35%, 75%
HSV	353°, 21%, 84%
XYZ	49.5594, 45.7280, 46.2587
YIQ	183.0250, 25.2150, 11.0950

Conversions

Conversions Part 2

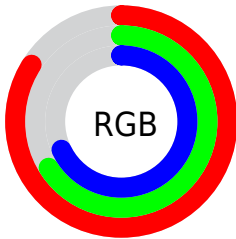
Format	Color
RYB	214, 169, 174
Decimal	14068142
CIELab	73.37, 17.23, 3.73
CIElCh	73, 17.626, 12.230
Yxy	45.7301, 0.3501, 0.3231
Android (android.graphics.Color)	4292258222 (0xFFD6A9AE)
YUV	183.0250, -4.4493, 27.1651
Hunter-Lab	67.6225, 12.4804, 6.7771

Details

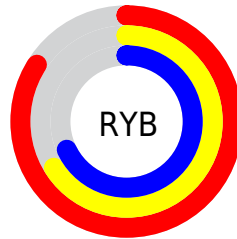
The HunterLab color $67.6225, 12.4804, 6.7771$ is a light color, and the websafe version is hex $CC9999$. A complement of this color would be $78.1874, -18.2976, 2.1139$, and the grayscale version is $68.8360, -3.6729, 3.7400$.

A 20% lighter version of the original color is $89.5703, 6.7421, 6.2422$, and $46.3666, 11.9154, 5.2352$ is the 20% darker color. If you saturate the color by 10%, you get $61.4151, 20.9138, 8.2822$, and if you desaturate by 10%, it is $74.2632, 4.3086, 5.5446$.

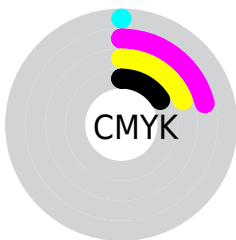
Distribution



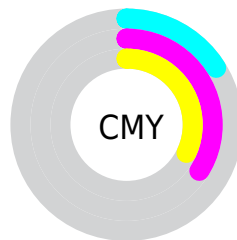
- Red (84%)
- Green (66%)
- Blue (68%)



- Red (84%)
- Yellow (66%)
- Blue (68%)



- Cyan (0%)
- Magenta (21%)
- Yellow (19%)
- Black (16%)



- Cyan (16%)
- Magenta (34%)
- Yellow (32%)

Brightness & Saturation Gradients

These gradients show how the HunterLab color 67.6225, 12.4804, 6.7771 changes by changing the brightness by 10 percent. The first figure shows a shift by +10% for each color and the second figure -10%.

Similar to the brightness gradients but the following saturation gradients show a change of the HunterLab color 67.6225, 12.4804, 6.7771 by changing the saturation by 10% instead.

67.6225, 12.4804,
6.7771

67.6225, 12.4804,
6.7771

192.2817, 12.0245,
14.9084

56.5976, 12.2244,
5.9907

91.5505, 12.7667,
8.4251

46.2457, 11.8865,
5.2269

104.3893, 12.8148,
9.2838

36.6154, 11.4526,
4.4865

117.7779, 12.8055,
10.1657

27.7657, 10.9077,
3.7682

131.6944, 12.7431,
11.0704

19.7725, 10.2316,
3.0689

146.1196, 12.6309,
11.9973

12.7400, 9.3980,
2.3819

161.0361, 12.4721,

6.1081, 11.9627,

12.9463

2.8664

176.4282, 12.2692,
13.9168

0.0000, NaN, NaN

0.0000, NaN, NaN

■ 67.6225, 12.4804,
6.7771

■ 67.6225, 12.4804,
6.7771

■ 61.4151, 20.9138,
8.2822

■ 74.2632, 4.3086,
5.5446

■ 55.7195, 29.5415,
10.0847

■ 81.2661, -3.5814,
4.5459

■ 50.6383, 38.1777,
12.1920

■ 88.5799, -11.2094,
3.7472

■ 46.2871, 46.4743,
14.5641

■ 96.1628, -18.6054,
3.1172

■ 42.7841, 53.8857,

■ 96.4553, -17.8958,

17.0871

0.9677

■ 40.2239, 59.7331,
19.5593

■ 38.6366, 63.4333,
21.7223

■ 37.8961, 65.0697,
23.1589

Harmonies

Analogous

The Analogous color harmony consists of three colors that are next to each other on the color wheel.



67.6240, 12.0485, -1.0528



67.6225, 12.4804, 6.7771



67.6240, 8.4490, 12.9958

Triad

The Triadic color harmony groups three colors that are evenly spaced from another and form a triangle on the color wheel.



67.6240, 12.4781, 6.7783



67.6240, -13.8746, 13.8609



67.6240, -8.3516, -12.1962

Complementary

The Complementary color scheme is a pair of colors which are on the opposite of each other on the color wheel.



67.6225, 12.4804, 6.7771



78.1874, -18.2976, 2.1139

Split Complementary

Split-complementary colors differ from the complementary color scheme. The scheme consists of three colors, the original color and two neighbors of the complement color.



67.6240, -14.8825, -7.1821



67.6225, 12.4804, 6.7771



67.6240, -17.9653, 8.0955

Square

The Square scheme is like the rectangle color scheme, but the four colors are evenly spaced on the color wheel.



67.6240, 12.4781, 6.7783



67.6240, -6.9158, 16.7466



67.6240, -18.3253, 0.4298



67.6240, -0.2433, -12.6583

Rectangle

The Rectangle color scheme consists of four colors that form a rectangle on the color wheel.



67.6225, 12.4804, 6.7771



67.6240, 3.8834, 15.6404



67.6240, -18.3253, 0.4298



67.6240, -10.7943, -10.9619

Sweetspot

The Sweet Spot groups the original color and five complimentary colors.



67.6240, 12.4781, 6.7783



94.7515, 0.4345, 6.1237



68.3754, 17.5313, -12.7258



43.5761, 0.4950, 2.8705

0.0000, NaN, NaN



46.2646, -2.4686, 2.5136

Same Dimension

The Same Dimension uses a secret algorithm to generate beautiful new colors.



67.6240, 12.4781, 6.7783



79.1979, 19.5252, 8.9980



72.3779, 2.8299, 13.8978



35.2746, 1.4156, 2.5133



29.4754, 50.6367, 17.8125



7.2920, 12.6325, 3.5907

Inverse Universe

The Inverse Universe completely reimagines the original color for something new.



67.6240, 12.4781, 6.7783



79.1979, 19.5252, 8.9980



72.8771, -8.9605, -7.0080



35.2746, 1.4156, 2.5133



29.4754, 50.6367, 17.8125



7.2920, 12.6325, 3.5907

Previews

White Background



This preview shows how the HunterLab color 67.6225, 12.4804, 6.7771 looks on a white background.

Color Contrast Check

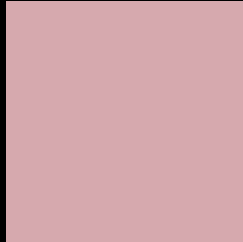
Large Text (above 18pt) WCAG AA × Fail

Any Text WCAG AA × Fail

Large Text (above 18pt) WCAG AAA × Fail

Any Text WCAG AAA × Fail

Black Background



This preview shows how the HunterLab color 67.6225, 12.4804, 6.7771 looks on a black background.

Color Contrast Check

Large Text (above 18pt) WCAG AA ✓ Pass

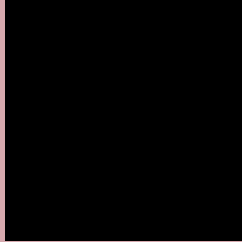
Any Text WCAG AA ✓ Pass

Large Text (above 18pt) WCAG AAA ✓ Pass

Any Text WCAG AAA ✓ Pass

If you want to check with other color combinations, try the [Color Contrast Checker](#).

HunterLab 67.6225, 12.4804, 6.7771 Background



This preview shows how black text looks on a background with the HunterLab color 67.6225, 12.4804, 6.7771.



This preview shows how white text looks on a background with the HunterLab color 67.6225, 12.4804,

6.7771.

Color Blindness Simulation

Color vision deficiency is a very complex topic, and I could not describe the different causes any better than Wikipedia does, so if you want to learn more, you should check out their [article about color blindness](#).

Dichromacy



Original Color

67.6225, 12.4804, 6.7771

Protanopia

67.9177, -2.3576, 4.1145

Deuteranopia

67.6068, 5.1637, 7.0777



Tritanopia

67.6672, 14.4471, 3.6451

Trichromacy



Original Color

67.6225, 12.4804, 6.7771

Protanomaly

67.7253, 2.8969, 4.9093

Deuteranomaly

67.5603, 7.9261, 7.0736

Tritanomaly

67.5771, 13.9773, 4.9311

Monochromacy



Original Color

67.6225, 12.4804, 6.7771

Achromatopsia

68.8136, -3.6717, 3.7388

Achromatomaly

68.2682, 1.8699, 4.5980

CSS Examples

Text

The CSS property to change the color of the text to HunterLab 67.6225, 12.4804, 6.7771 is called "color". The color property can be set on classes, ids or directly on the HTML element.

This example shows how text in the color `rgb(214, 169, 174)` looks like.

```
.text, #text, p{  
    color:rgb(214, 169, 174)  
}
```

If you want to add a text shadow in that color use the text-shadow property, you can generate a text shadow directly with our [CSS Text Shadow Generator](#).

Here you see how black text with a 4 pixel rgb(214, 169, 174) colored shadow looks like.

```
.shadow{ text-shadow: 4px 4px 2px rgb(214, 169, 174) }
```

Border

The CSS property to change the border of an element to HunterLab 67.6225, 12.4804, 6.7771 is called "border". The border property can be set on classes, ids or directly on the HTML element.

This example shows the color as border, it can be applied via the CSS property "border" or "border-color".

```
.border, #border, table{ border:4px solid rgb(214, 169, 174) }
```


If only the border color should be changed use the property `border-color`.

```
.border{ border-color:rgb(214, 169, 174) }
```

If you want to add a box shadow in that color use:

Here you see how a box with a 4 pixel `rgb(214, 169, 174)` colored shadow looks like.

```
.boxshadow{ -moz-box-shadow:4px 4px 4px  
4px rgb(214, 169, 174); -webkit-box-  
shadow:4px 4px 4px 4px rgb(214, 169, 174);  
box-shadow:4px 4px 4px 4px rgb(214, 169,  
174) }
```

Background

The CSS property to change the background color of an element to HunterLab 67.6225, 12.4804, 6.7771 is called "background". The background property can be set on classes, ids or directly on the HTML element.

```
.background, #background, body{  
background: rgb(214, 169, 174) }
```

If only the background color should be changed can be used:

```
.background{ background-color: rgb(214,  
169, 174) }
```

This example shows the color as background, it is applied via the CSS property "background".

To optimize and compress your CSS code, you can use our [online CSS compressor and optimizer](#) based on csstidy. If you want to create a linear or radial gradient as background or border, check our [CSS Gradient Generator](#).

Hey! You found this booklet interesting? Support Converting Colors with the new Membership Option!

The pro membership hides all ads, plus gives you double the colors in the color bucket, and more awesome pro features!

[Learn more, Memberships starting at \\$2.50/m!](#)

**Follow me
on Twitter!**

@ConvertingColor