

Converting Colors

HunterLab(67.7224, 26.4359,
0.0137)

Have a look what the booklet for
HunterLab(67.7224, 26.4359,
0.0137) contains.

HunterLab(67.8023, 26.2336, 0.1389)	3
<i>Conversions</i>	4
<i>Details</i>	6
<i>Harmonies</i>	12
<i>Previews</i>	24
<i>Color Blindness Simulation</i>	28
<i>CSS Examples</i>	31

Color

**HunterLab(67.8023, 26.2336,
0.1389)**

Conversions

Conversions Part 1

Format	Color
Hex	E8A0BD
RGB	232, 160, 189
RGB Percent	91%, 63%, 74%
CMY	0.0902, 0.3725, 0.2588
CMYK	0.00, 0.31, 0.19, 0.09
HSL	336°, 61%, 77%
HSV	336°, 31%, 91%
XYZ	55.0348, 45.9715, 54.1169
YIQ	184.8340, 33.6030, 24.2830

Conversions

Conversions Part 2

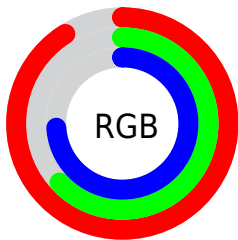
Format	Color
R _Y B	232, 160, 189
Decimal	15245501
CIE Lab	73.53, 30.85, -4.07
CIE LCh	74, 31.116, 352.492
Yxy	45.9736, 0.3548, 0.2964
Android (android.graphics.Color)	4293435581 (0xFFE8A0BD)
YUV	184.8340, 2.0538, 41.3646
Hunter-Lab	67.8023, 26.2336, 0.1389

Details

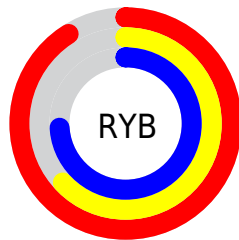
The HunterLab color $67.8023, 26.2336, 0.1389$ is a light color, and the websafe version is hex $FF99CC$. A complement of this color would be $83.3665, -29.9799, 10.6604$, and the grayscale version is $69.5660, -3.7119, 3.7797$.

A 20% lighter version of the original color is $87.4377, 14.4280, -4.4458$, and $46.4937, 24.1598, -0.6311$ is the 20% darker color. If you saturate the color by 10%, you get $61.7194, 36.4498, -0.3633$, and if you desaturate by 10%, it is $74.4398, 16.0446, 1.2200$.

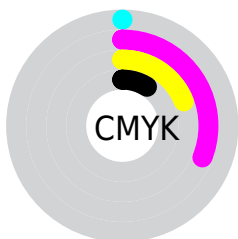
Distribution



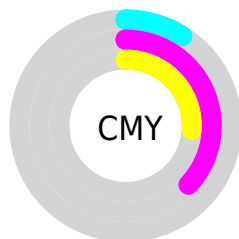
- Red (91%)
- Green (63%)
- Blue (74%)



- Red (91%)
- Yellow (63%)
- Blue (74%)



- Cyan (0%)
- Magenta (31%)
- Yellow (19%)
- Black (9%)



- Cyan (9%)
- Magenta (37%)
- Yellow (26%)

Brightness & Saturation Gradients

These gradients show how the HunterLab color 67.8023, 26.2336, 0.1389 changes by changing the brightness by 10 percent. The first figure shows a shift by +10% for each color and the second figure -10%.

Similar to the brightness gradients but the following saturation gradients show a change of the HunterLab color 67.8023, 26.2336, 0.1389 by changing the saturation by 10% instead.

67.8023, 26.2336,
0.1389

67.8023, 26.2336,
0.1389

192.5364, 30.3615,
5.5181

56.7671, 25.3801,
-0.2673

91.7494, 27.6515,
1.0858

46.4041, 24.4222,
-0.6265

104.5972, 28.2373,
1.6179

36.7620, 23.3456,
-0.9323

117.9942, 28.7489,
2.1865

27.8994, 22.1375,
-1.1782

131.9189, 29.1918,
2.7897

19.8920, 20.7885,
-1.3552

146.3520, 29.5707,
3.4258

12.8432, 19.3085,
-1.4500

161.2762, 29.8896,

6.2500, 22.1109,

4.0934

-2.3562

176.6757, 30.1522,
4.7912

0.0000, INF, NaN

0.0000, NaN, NaN

■ 67.8023, 26.2336,
0.1389

■ 67.8023, 26.2336,
0.1389

■ 61.7194, 36.4498,
-0.3633

■ 74.4398, 16.0446,
1.2200

■ 56.2895, 46.4454,
-0.1576

■ 81.5408, 6.0198,
2.7599

■ 51.6304, 55.7846,
0.8877

■ 89.0369, -3.7929,
4.6661

■ 47.8582, 63.8418,
2.8579

■ 96.8719, -13.3860,
6.8657

■ 45.0632, 69.8904,

■ 97.9265, -12.6259,

5.7296

2.8401

■ 43.2699, 73.3561,
9.3142

■ 42.3721, 74.4470,
12.7799

Harmonies

Analogous

The Analogous color harmony consists of three colors that are next to each other on the color wheel.



67.8039, 19.8948, -14.4855



67.8023, 26.2336, 0.1389



67.8039, 24.0514, 13.0566

Triad

The Triadic color harmony groups three colors that are evenly spaced from another and form a triangle on the color wheel.



67.8039, 26.2310, 0.1403



67.8039, -13.9419, 23.8756



67.8039, -19.7460, -20.8447

Complementary

The Complementary color scheme is a pair of colors which are on the opposite of each other on the color wheel.



67.8023, 26.2336, 0.1389



83.3665, -29.9799, 10.6604

Split Complementary

Split-complementary colors differ from the complementary color scheme. The scheme consists of three colors, the original color and two neighbors of the complement color.



67.8039, -27.4636, -7.2370



67.8023, 26.2336, 0.1389



67.8039, -24.3139, 17.9107

Square

The Square scheme is like the rectangle color scheme, but the four colors are evenly spaced on the color wheel.



67.8039, 26.2310, 0.1403



67.8039, 0.0527, 25.0391



67.8039, -29.0630, 7.0590



67.8039, -7.2190, -28.1475

Rectangle

The Rectangle color scheme consists of four colors that form a rectangle on the color wheel.



67.8023, 26.2336, 0.1389



67.8039, 18.1411, 19.2473



67.8039, -29.0630, 7.0590



67.8039, -22.9442, -16.7354

Sweetspot

The Sweet Spot groups the original color and five complimentary colors.



67.8039, 26.2310, 0.1403



92.3958, 4.5126, 3.4641



65.9748, 23.8685, -27.5377



42.1923, 2.8331, 1.4685

0.0000, NaN, NaN



46.2646, -2.4686, 2.5136

Same Dimension

The Same Dimension uses a secret algorithm to generate beautiful new colors.



67.8039, 26.2310, 0.1403



71.2284, 36.2167, -0.2741



68.5336, 18.7898, 13.7848



38.0312, 2.0473, 1.3976



31.6080, 55.6054, 8.9854



8.6963, 15.4958, 0.9440

Inverse Universe

The Inverse Universe completely reimagines the original color for something new.



67.8039, 26.2310, 0.1403



71.2284, 36.2167, -0.2741



82.2762, -21.9248, -4.7011



38.0312, 2.0473, 1.3976



31.6080, 55.6054, 8.9854



8.6963, 15.4958, 0.9440

Previews

White Background



This preview shows how the HunterLab color 67.8023, 26.2336, 0.1389 looks on a white background.

Color Contrast Check

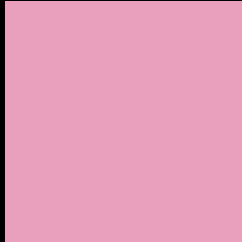
Large Text (above 18pt) WCAG AA × Fail

Any Text WCAG AA × Fail

Large Text (above 18pt) WCAG AAA × Fail

Any Text WCAG AAA × Fail

Black Background



This preview shows how the HunterLab color 67.8023, 26.2336, 0.1389 looks on a black background.

Color Contrast Check

Large Text (above 18pt) WCAG AA ✓ Pass

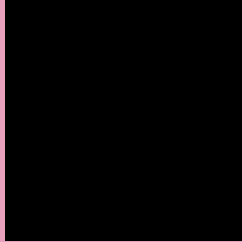
Any Text WCAG AA ✓ Pass

Large Text (above 18pt) WCAG AAA ✓ Pass

Any Text WCAG AAA ✓ Pass

If you want to check with other color combinations, try the [Color Contrast Checker](#).

HunterLab 67.8023, 26.2336, 0.1389 Background



This preview shows how black text looks on a background with the HunterLab color 67.8023, 26.2336, 0.1389.



This preview shows how white text looks on a background with the HunterLab color 67.8023, 26.2336,

0.1389.

Color Blindness Simulation

Color vision deficiency is a very complex topic, and I could not describe the different causes any better than Wikipedia does, so if you want to learn more, you should check out their [article about color blindness](#).

Dichromacy



Original Color

67.8023, 26.2336, 0.1389

Protanopia

68.0621, -0.5042, -6.2057

Deuteranopia

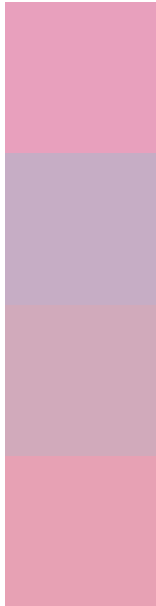
67.7797, 5.0505, 1.2182



Tritanopia

67.6453, 22.2441, 6.5241

Trichromacy



Original Color

67.8023, 26.2336, 0.1389

Protanomaly

67.7673, 8.6571, -4.3059

Deuteranomaly

67.7441, 12.2421, 0.8113

Tritanomaly

67.6564, 23.9077, 4.2678

Monochromacy



Original Color

67.8023, 26.2336, 0.1389

Achromatopsia

69.6527, -3.7165, 3.7844

Achromatomaly

68.6676, 6.5443, 2.3169

CSS Examples

Text

The CSS property to change the color of the text to HunterLab 67.8023, 26.2336, 0.1389 is called "color". The color property can be set on classes, ids or directly on the HTML element.

This example shows how text in the color `rgb(232, 160, 189)` looks like.

```
.text, #text, p{  
    color:rgb(232, 160, 189)  
}
```

If you want to add a text shadow in that color use the text-shadow property, you can generate a text shadow directly with our [CSS Text Shadow Generator](#).

Here you see how black text with a 4 pixel rgb(232, 160, 189) colored shadow looks like.

```
.shadow{ text-shadow: 4px 4px 2px rgb(232, 160, 189) }
```

Border

The CSS property to change the border of an element to HunterLab 67.8023, 26.2336, 0.1389 is called "border". The border property can be set on classes, ids or directly on the HTML element.

This example shows the color as border, it can be applied via the CSS property "border" or "border-color".

```
.border, #border, table{ border:4px solid rgb(232, 160, 189) }
```


If only the border color should be changed use the property border-color.

```
.border{ border-color:rgb(232, 160, 189) }
```

If you want to add a box shadow in that color use:

Here you see how a box with a 4 pixel rgb(232, 160, 189) colored shadow looks like.

```
.boxshadow{ -moz-box-shadow:4px 4px 4px  
4px rgb(232, 160, 189); -webkit-box-  
shadow:4px 4px 4px 4px rgb(232, 160, 189);  
box-shadow:4px 4px 4px 4px rgb(232, 160,  
189) }
```

Background

The CSS property to change the background color of an element to HunterLab 67.8023, 26.2336, 0.1389 is called "background". The background property can be set on classes, ids or directly on the HTML element.

```
.background, #background, body{  
background: rgb(232, 160, 189) }
```

If only the background color should be changed can be used:

```
.background{ background-color: rgb(232,  
160, 189) }
```

This example shows the color as background, it is applied via the CSS property "background".

To optimize and compress your CSS code, you can use our [online CSS compressor and optimizer](#) based on csstidy. If you want to create a linear or radial gradient as background or border, check our [CSS Gradient Generator](#).

Hey! You found this booklet interesting? Support Converting Colors with the new Membership Option!

The pro membership hides all ads, plus gives you double the colors in the color bucket, and more awesome pro features!

[Learn more, Memberships starting at \\$2.50/m!](#)

**Follow me
on Twitter!**

@ConvertingColor