

Converting Colors

HunterLab(67.7323, 27.2336,
1.0468)

Have a look what the booklet for
HunterLab(67.7323, 27.2336,
1.0468) contains.

HunterLab(67.7322, 27.2035, 1.0587)	3
<i>Conversions</i>	4
<i>Details</i>	6
<i>Harmonies</i>	12
<i>Previews</i>	24
<i>Color Blindness Simulation</i>	28
<i>CSS Examples</i>	31

Color

**HunterLab(67.7322, 27.2035,
1.0587)**

Conversions

Conversions Part 1

Format	Color
Hex	EA9FBB
RGB	234, 159, 187
RGB Percent	92%, 62%, 73%
CMY	0.0824, 0.3764, 0.2667
CMYK	0.00, 0.32, 0.20, 0.08
HSL	338°, 64%, 77%
HSV	338°, 32%, 92%
XYZ	55.2994, 45.8765, 52.9541
YIQ	184.6170, 35.7120, 24.6080

Conversions

Conversions Part 2

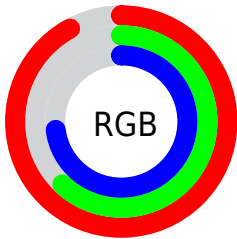
Format	Color
RYB	234, 159, 187
Decimal	15376315
CIELab	73.47, 31.78, -3.03
CIELCh	73, 31.926, 354.556
Yxy	45.8786, 0.3588, 0.2977
Android (android.graphics.Color)	4293566395 (0xFFEA9FBB)
YUV	184.6170, 1.1748, 43.3089
Hunter-Lab	67.7322, 27.2035, 1.0587

Details

The HunterLab color **67.7322, 27.2035, 1.0587** is a light color, and the websafe version is hex **FF99CC**. A complement of this color would be **84.0678, -30.6279, 10.0814**, and the grayscale version is **69.4779, -3.7072, 3.7749**.

A 20% lighter version of the original color is **87.0771, 14.6092, -3.8232**, and **46.4583, 25.0959, 0.2830** is the 20% darker color. If you saturate the color by 10%, you get **61.6291, 37.4284, 0.9195**, and if you desaturate by 10%, it is **74.4065, 17.0001, 1.7866**.

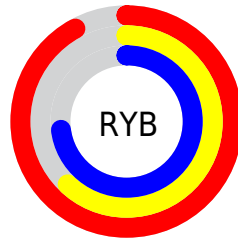
Distribution



Red (92%)

Green (62%)

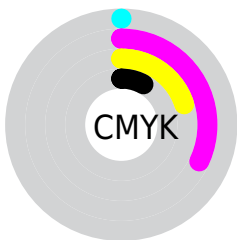
Blue (73%)



Red (92%)

Yellow (62%)

Blue (73%)

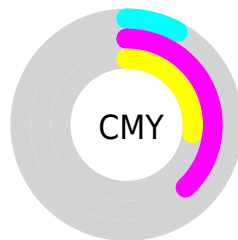


Cyan (0%)

Magenta (32%)

Yellow (20%)

Black (8%)



Cyan (8%)

Magenta (38%)

Yellow (27%)

Brightness & Saturation Gradients

These gradients show how the HunterLab color 67.7322, 27.2035, 1.0587 changes by changing the brightness by 10 percent. The first figure shows a shift by +10% for each color and the second figure -10%.

Similar to the brightness gradients but the following saturation gradients show a change of the HunterLab color 67.7322, 27.2035, 1.0587 by changing the saturation by 10% instead.

67.7322, 27.2035,
1.0587

67.7322, 27.2035,
1.0587

192.4371, 31.6389,
6.7907

56.7010, 26.3106,
0.6046

91.6719, 28.6964,
2.0946

46.3424, 25.3124,
0.1948

104.5162, 29.3182,
2.6684

36.7049, 24.1946,
-0.1648

117.9099, 29.8648,
3.2772

27.8473, 22.9452,
-0.4684

131.8314, 30.3417,
3.9191

19.8454, 21.5562,
-0.7079

146.2614, 30.7536,
4.5926

12.8030, 20.0426,
-0.8713

161.1826, 31.1048,

6.1951, 23.0830,

5.2965

-1.6895

176.5792, 31.3988,
6.0295

0.0000, INF, NaN

0.0000, NaN, NaN

■ 67.7322, 27.2035,
1.0587

■ 67.7322, 27.2035,
1.0587

■ 61.6291, 37.4284,
0.9195

■ 74.4065, 17.0001,
1.7866

■ 56.1993, 47.4133,
1.4894

■ 81.5578, 6.9631,
2.9861

■ 51.5638, 56.7013,
2.8829

■ 89.1148, -2.8562,
4.5650

■ 47.8407, 64.6445,
5.1553

■ 97.0193, -12.4493,
6.4493

■ 45.1180, 70.5076,

■ 98.0982, -12.0162,

8.2425

3.0569

■ 43.4121, 73.7412,
11.9156

■ 42.6455, 74.6587,
14.9440

Harmonies

Analogous

The Analogous color harmony consists of three colors that are next to each other on the color wheel.



67.7338, 21.2378, -14.0233



67.7322, 27.2035, 1.0587



67.7338, 24.3461, 14.0275

Triad

The Triadic color harmony groups three colors that are evenly spaced from another and form a triangle on the color wheel.



67.7338, 27.2008, 1.0601



67.7338, -15.0755, 24.0247



67.7338, -19.3872, -22.3713

Complementary

The Complementary color scheme is a pair of colors which are on the opposite of each other on the color wheel.



67.7322, 27.2035, 1.0587



84.0678, -30.6279, 10.0814

Split Complementary

Split-complementary colors differ from the complementary color scheme. The scheme consists of three colors, the original color and two neighbors of the complement color.



67.7338, -27.6719, -8.5946



67.7322, 27.2035, 1.0587



67.7338, -25.3368, 17.6176

Square

The Square scheme is like the rectangle color scheme, but the four colors are evenly spaced on the color wheel.



67.7338, 27.2008, 1.0601



67.7338, -0.8885, 25.5287



67.7338, -29.7530, 6.2126



67.7338, -6.3044, -29.2924

Rectangle

The Rectangle color scheme consists of four colors that form a rectangle on the color wheel.



67.7322, 27.2035, 1.0587



67.7338, 17.9432, 20.1036



67.7338, -29.7530, 6.2126



67.7338, -22.7792, -18.2620

Sweetspot

The Sweet Spot groups the original color and five complimentary colors.



67.7338, 27.2008, 1.0601



91.5472, 5.4890, 3.6100



66.1467, 25.9090, -28.5603



41.8198, 3.2527, 1.5656

0.0000, NaN, NaN



46.2646, -2.4686, 2.5136

Same Dimension

The Same Dimension uses a secret algorithm to generate beautiful new colors.



67.7338, 27.2008, 1.0601



70.4664, 36.9092, 0.9883



69.2177, 18.5067, 14.8770



38.9192, 2.0545, 1.5669



32.0033, 56.0949, 10.6932



9.0683, 16.0863, 1.5455

Inverse Universe

The Inverse Universe completely reimagines the original color for something new.



67.7338, 27.2008, 1.0601



70.4664, 36.9092, 0.9883



82.0356, -21.4000, -6.0841



38.9192, 2.0545, 1.5669



32.0033, 56.0949, 10.6932



9.0683, 16.0863, 1.5455

Previews

White Background



This preview shows how the HunterLab color 67.7322, 27.2035, 1.0587 looks on a white background.

Color Contrast Check

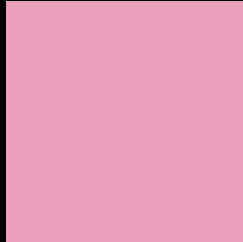
Large Text (above 18pt) WCAG AA × Fail

Any Text WCAG AA × Fail

Large Text (above 18pt) WCAG AAA × Fail

Any Text WCAG AAA × Fail

Black Background



This preview shows how the HunterLab color 67.7322, 27.2035, 1.0587 looks on a black background.

Color Contrast Check

Large Text (above 18pt) WCAG AA ✓ Pass

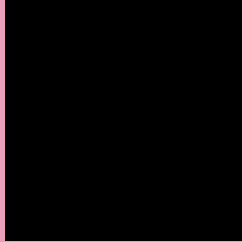
Any Text WCAG AA ✓ Pass

Large Text (above 18pt) WCAG AAA ✓ Pass

Any Text WCAG AAA ✓ Pass

If you want to check with other color combinations, try the [Color Contrast Checker](#).

HunterLab 67.7322, 27.2035, 1.0587 Background



This preview shows how black text looks on a background with the HunterLab color 67.7322, 27.2035, 1.0587.



This preview shows how white text looks on a background with the HunterLab color 67.7322, 27.2035,

1.0587.

Color Blindness Simulation

Color vision deficiency is a very complex topic, and I could not describe the different causes any better than Wikipedia does, so if you want to learn more, you should check out their [article about color blindness](#).

Dichromacy



Original Color

67.7322, 27.2035, 1.0587

Protanopia

68.1149, -0.3921, -5.5988

Deuteranopia

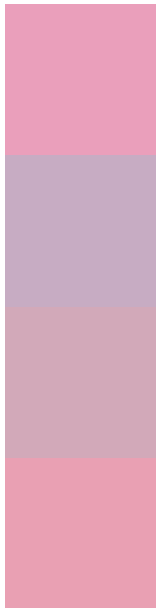
67.8166, 5.0497, 2.2309



Tritanopia

67.7269, 23.7707, 7.0932

Trichromacy



Original Color

67.7322, 27.2035, 1.0587

Protanomaly

67.5184, 9.1542, -3.5730

Deuteranomaly

67.5132, 12.7877, 1.5168

Tritanomaly

67.6165, 25.0481, 4.7074

Monochromacy



Original Color

67.7322, 27.2035, 1.0587

Achromatopsia

69.6527, -3.7165, 3.7844

Achromatomaly

68.7694, 6.8831, 2.4450

CSS Examples

Text

The CSS property to change the color of the text to HunterLab 67.7322, 27.2035, 1.0587 is called "color". The color property can be set on classes, ids or directly on the HTML element.

This example shows how text in the color `rgb(234, 159, 187)` looks like.

```
.text, #text, p{  
    color:rgb(234, 159, 187)  
}
```

If you want to add a text shadow in that color use the text-shadow property, you can generate a text shadow directly with our [CSS Text Shadow Generator](#).

Here you see how black text with a 4 pixel rgb(234, 159, 187) colored shadow looks like.

```
.shadow{ text-shadow: 4px 4px 2px rgb(234, 159, 187) }
```

Border

The CSS property to change the border of an element to HunterLab 67.7322, 27.2035, 1.0587 is called "border". The border property can be set on classes, ids or directly on the HTML element.

This example shows the color as border, it can be applied via the CSS property "border" or "border-color".

```
.border, #border, table{ border:4px solid rgb(234, 159, 187) }
```


If only the border color should be changed use the property `border-color`.

```
.border{ border-color:rgb(234, 159, 187) }
```

If you want to add a box shadow in that color use:

Here you see how a box with a 4 pixel `rgb(234, 159, 187)` colored shadow looks like.

```
.boxshadow{ -moz-box-shadow:4px 4px 4px  
4px rgb(234, 159, 187); -webkit-box-  
shadow:4px 4px 4px 4px rgb(234, 159, 187);  
box-shadow:4px 4px 4px 4px rgb(234, 159,  
187) }
```

Background

The CSS property to change the background color of an element to HunterLab 67.7322, 27.2035, 1.0587 is called "background". The background property can be set on classes, ids or directly on the HTML element.

```
.background, #background, body{  
background: rgb(234, 159, 187) }
```

If only the background color should be changed can be used:

```
.background{ background-color: rgb(234,  
159, 187) }
```

This example shows the color as background, it is applied via the CSS property "background".

To optimize and compress your CSS code, you can use our [online CSS compressor and optimizer](#) based on csstidy. If you want to create a linear or radial gradient as background or border, check our [CSS Gradient Generator](#).

Hey! You found this booklet interesting? Support Converting Colors with the new Membership Option!

The pro membership hides all ads, plus gives you double the colors in the color bucket, and more awesome pro features!

[Learn more, Memberships starting at \\$2.50/m!](#)

**Follow me
on Twitter!**

@ConvertingColor