

Converting Colors

HunterLab(67.8554, 10.1265,
8.3077)

Have a look what the booklet for
HunterLab(67.8554, 10.1265,
8.3077) contains.

HunterLab(67.8698, 10.2704, 8.3434)	3
<i>Conversions</i>	4
<i>Details</i>	6
<i>Harmonies</i>	12
<i>Previews</i>	24
<i>Color Blindness Simulation</i>	28
<i>CSS Examples</i>	31

Color

**HunterLab(67.8698, 10.2704,
8.3434)**

Conversions

Conversions Part 1

Format	Color
Hex	D4ABAB
RGB	212, 171, 171
RGB Percent	83%, 67%, 67%
CMY	0.1686, 0.3294, 0.3294
CMYK	0.00, 0.19, 0.19, 0.17
HSL	0°, 32%, 75%
HSV	0°, 19%, 83%
XYZ	49.0649, 46.0631, 44.8331
YIQ	183.2590, 24.4360, 8.6920

Conversions

Conversions Part 2

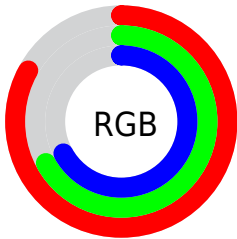
Format	Color
R _Y B	212, 171, 171
Decimal	13937579
CIE Lab	73.59, 14.94, 5.67
CIE LCh	74, 15.984, 20.777
Yxy	46.0652, 0.3506, 0.3291
Android (android.graphics.Color)	4292127659 (0xFFD4ABAB)
YUV	183.2590, -6.0437, 25.2059
Hunter-Lab	67.8698, 10.2704, 8.3434

Details

The HunterLab color **67.8698, 10.2704, 8.3434** is a light color, and the websafe version is hex **CC9999**. A complement of this color would be **77.7797, -16.2698, 0.1619**, and the grayscale version is **68.9408, -3.6785, 3.7457**.

A 20% lighter version of the original color is **90.0798, 5.1742, 8.2393**, and **46.5765, 9.8222, 6.6555** is the 20% darker color. If you saturate the color by 10%, you get **61.5986, 18.3031, 10.5853**, and if you desaturate by 10%, it is **74.5656, 2.5672, 6.2461**.

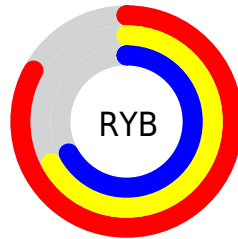
Distribution



Red (83%)

Green (67%)

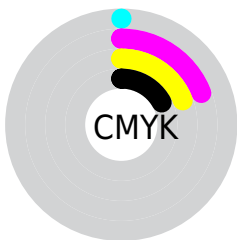
Blue (67%)



Red (83%)

Yellow (67%)

Blue (67%)

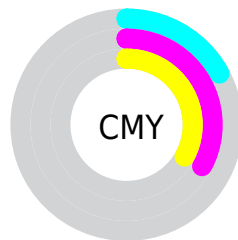


Cyan (0%)

Magenta (19%)

Yellow (19%)

Black (17%)



Cyan (17%)


Magenta (33%)


Yellow (33%)

Brightness & Saturation Gradients


These gradients show how the HunterLab color 67.8698, 10.2704, 8.3434 changes by changing the brightness by 10 percent. The first figure shows a shift by +10% for each color and the second figure -10%.


Similar to the brightness gradients but the following saturation gradients show a change of the HunterLab color 67.8698, 10.2704, 8.3434 by changing the saturation by 10% instead.


 67.8698, 10.2704,
8.3434

 67.8698, 10.2704,
8.3434


192.6320, 9.0076,
17.1927

 56.8307, 10.1224,
7.4559


 91.8240, 10.3546,
10.1762

 46.4636, 9.8978,
6.5839


104.6751, 10.3075,
11.1206

 36.8171, 9.5835,
5.7260


118.0754, 10.2065,
12.0842

 27.9496, 9.1652,
4.8783

132.0031, 10.0554,
13.0674

 19.9368, 8.6233,
4.0336

146.4392, 9.8573,
14.0699

 12.8820, 7.9305,
3.1773

161.3662, 9.6151,

 6.3023, 9.9961,

15.0917

4.0722

176.7685, 9.3312,
16.1327

0.0000, NaN, NaN

0.0000, NaN, NaN

■ 67.8698, 10.2704,
8.3434

■ 67.8698, 10.2704,
8.3434

■ 61.5986, 18.3031,
10.5853

■ 74.5656, 2.5672,
6.2461

■ 55.8294, 26.6275,
12.9592

■ 81.6163, -4.8071,
4.2827

■ 50.6641, 35.0984,
15.4255

■ 88.9717, -11.8859,
2.4403

■ 46.2190, 43.4138,
17.8915

■ 96.3001, -18.4565,
0.7685

■ 42.6159, 51.0665,

20.1958

■ 39.9566, 57.3791,
22.1188

■ 38.2821, 61.7036,
23.4463

■ 37.4581, 63.9446,
24.1373

■ 37.4133, 64.0684,
24.1756

Harmonies

Analogous

The Analogous color harmony consists of three colors that are next to each other on the color wheel.



67.8713, 11.0735, 1.4779



67.8698, 10.2704, 8.3434



67.8713, 5.6555, 13.4097

Triad

The Triadic color harmony groups three colors that are evenly spaced from another and form a triangle on the color wheel.



67.8713, 10.2681, 8.3445



67.8713, -14.3509, 11.7451



67.8713, -5.9018, -11.1500

Complementary

The Complementary color scheme is a pair of colors which are on the opposite of each other on the color wheel.



67.8698, 10.2704, 8.3434



77.7797, -16.2698, 0.1619

Split Complementary

Split-complementary colors differ from the complementary color scheme. The scheme consists of three colors, the original color and two neighbors of the complement color.



67.8713, -12.4324, -7.7103



67.8698, 10.2704, 8.3434



67.8713, -17.1704, 5.8387

Square

The Square scheme is like the rectangle color scheme, but the four colors are evenly spaced on the color wheel.



67.8713, 10.2681, 8.3445



67.8713, -8.6232, 15.2213



67.8713, -16.4835, -1.3099



67.8713, 1.5220, -10.2934

Rectangle

The Rectangle color scheme consists of four colors that form a rectangle on the color wheel.



67.8698, 10.2704, 8.3434



67.8713, 1.1473, 15.3241



67.8713, -16.4835, -1.3099



67.8713, -8.2692, -10.4452

Sweetspot

The Sweet Spot groups the original color and five complimentary colors.



67.8713, 10.2681, 8.3445



94.6985, 0.1438, 6.8876



69.1931, 17.1818, -10.4357



43.5490, 0.3465, 3.2614

0.0000, NaN, NaN



46.2646, -2.4686, 2.5136

Same Dimension

The Same Dimension uses a secret algorithm to generate beautiful new colors.



67.8713, 10.2681, 8.3445



80.5618, 16.4726, 11.3413



73.7685, -0.2621, 14.4846



35.2435, 1.2456, 2.9630



29.3964, 50.3390, 18.9952



7.2200, 12.3612, 4.6653

Inverse Universe

The Inverse Universe completely reimagines the original color for something new.



77.7797, -16.2698, 0.1619



95.1415, -22.6638, -0.7284



71.3386, -6.1936, -7.9177



37.5602, -4.9374, 1.0572



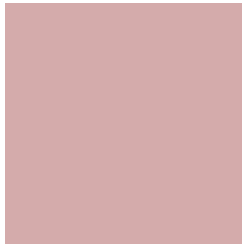
56.5663, -29.9850, -5.9738



13.8924, -7.3644, -1.4668

Previews

White Background



This preview shows how the HunterLab color 67.8698, 10.2704, 8.3434 looks on a white background.

Color Contrast Check

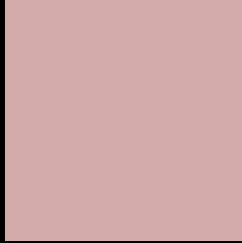
Large Text (above 18pt) WCAG AA × Fail

Any Text WCAG AA × Fail

Large Text (above 18pt) WCAG AAA × Fail

Any Text WCAG AAA × Fail

Black Background



This preview shows how the HunterLab color 67.8698, 10.2704, 8.3434 looks on a black background.

Color Contrast Check

Large Text (above 18pt) WCAG AA ✓ Pass

Any Text WCAG AA ✓ Pass

Large Text (above 18pt) WCAG AAA ✓ Pass

Any Text WCAG AAA ✓ Pass

If you want to check with other color combinations, try the [Color Contrast Checker](#).

HunterLab 67.8698, 10.2704, 8.3434 Background



This preview shows how black text looks on a background with the HunterLab color 67.8698, 10.2704, 8.3434.



This preview shows how white text looks on a background with the HunterLab color 67.8698, 10.2704,

8.3434.

Color Blindness Simulation

Color vision deficiency is a very complex topic, and I could not describe the different causes any better than Wikipedia does, so if you want to learn more, you should check out their [article about color blindness](#).

Dichromacy



Original Color

67.8698, 10.2704, 8.3434

Protanopia

67.8906, -2.6879, 5.9160

Deuteranopia

67.9108, 4.5427, 8.7233



Tritanopia

67.7491, 13.3648, 3.2505

Trichromacy



Original Color

67.8698, 10.2704, 8.3434

Protanomaly

67.8987, 1.7598, 6.9024

Deuteranomaly

68.0413, 6.4455, 8.9007

Tritanomaly

67.9043, 12.2113, 5.2799

Monochromacy



Original Color

67.8698, 10.2704, 8.3434

Achromatopsia

68.8136, -3.6717, 3.7388

Achromatomaly

68.5304, 1.2023, 5.3519

CSS Examples

Text

The CSS property to change the color of the text to HunterLab 67.8698, 10.2704, 8.3434 is called "color". The color property can be set on classes, ids or directly on the HTML element.

This example shows how text in the color `rgb(212, 171, 171)` looks like.

```
.text, #text, p{  
    color:rgb(212, 171, 171)  
}
```

If you want to add a text shadow in that color use the text-shadow property, you can generate a text shadow directly with our [CSS Text Shadow Generator](#).

Here you see how black text with a 4 pixel rgb(212, 171, 171) colored shadow looks like.

```
.shadow{ text-shadow: 4px 4px 2px rgb(212, 171, 171) }
```

Border

The CSS property to change the border of an element to HunterLab 67.8698, 10.2704, 8.3434 is called "border". The border property can be set on classes, ids or directly on the HTML element.

This example shows the color as border, it can be applied via the CSS property "border" or "border-color".

```
.border, #border, table{ border:4px solid rgb(212, 171, 171) }
```


If only the border color should be changed use the property `border-color`.

```
.border{ border-color:rgb(212, 171, 171) }
```

If you want to add a box shadow in that color use:

Here you see how a box with a 4 pixel `rgb(212, 171, 171)` colored shadow looks like.

```
.boxshadow{ -moz-box-shadow:4px 4px 4px  
4px rgb(212, 171, 171); -webkit-box-  
shadow:4px 4px 4px 4px rgb(212, 171, 171);  
box-shadow:4px 4px 4px 4px rgb(212, 171,  
171) }
```

Background

The CSS property to change the background color of an element to HunterLab 67.8698, 10.2704, 8.3434 is called "background". The background property can be set on classes, ids or directly on the HTML element.

```
.background, #background, body{  
background: rgb(212, 171, 171) }
```

If only the background color should be changed can be used:

```
.background{ background-color: rgb(212,  
171, 171) }
```

This example shows the color as background, it is applied via the CSS property "background".

To optimize and compress your CSS code, you can use our [online CSS compressor and optimizer](#) based on csstidy. If you want to create a linear or radial gradient as background or border, check our [CSS Gradient Generator](#).

Hey! You found this booklet interesting? Support Converting Colors with the new Membership Option!

The pro membership hides all ads, plus gives you double the colors in the color bucket, and more awesome pro features!

[Learn more, Memberships starting at \\$2.50/m!](#)

**Follow me
on Twitter!**

@ConvertingColor