

Converting Colors

HunterLab(67.8787, 1.1020,
10.3074)

Have a look what the booklet for
HunterLab(67.8787, 1.1020,
10.3074) contains.

HunterLab(67.8732, 1.2270, 10.3305)	3
<i>Conversions</i>	4
<i>Details</i>	6
<i>Harmonies</i>	12
<i>Previews</i>	24
<i>Color Blindness Simulation</i>	28
<i>CSS Examples</i>	31

Color

**HunterLab(67.8732, 1.2270,
10.3305)**

Conversions

Conversions Part 1

Format	Color
Hex	C5B1A6
RGB	197, 177, 166
RGB Percent	77%, 69%, 65%
CMY	0.2274, 0.3059, 0.3490
CMYK	0.00, 0.10, 0.16, 0.23
HSL	21°, 21%, 71%
HSV	21°, 16%, 77%
XYZ	45.6310, 46.0677, 42.5633
YIQ	181.7260, 15.4510, 0.8190

Conversions

Conversions Part 2

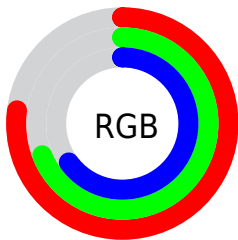
Format	Color
RYB	197, 183, 166
Decimal	12956070
CIELab	73.59, 5.35, 8.23
CIElCh	74, 9.814, 56.986
Yxy	46.0698, 0.3399, 0.3431
Android (android.graphics.Color)	4291146150 (0xFFC5B1A6)
YUV	181.7260, -7.7529, 13.3953
Hunter-Lab	67.8732, 1.2270, 10.3305

Details

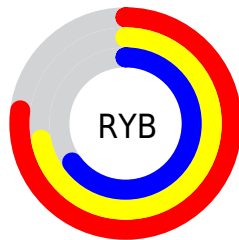
The HunterLab color $67.8732, 1.2270, 10.3305$ is a light color, and the websafe version is hex `CCCCCC`. A complement of this color would be $68.7422, -7.7013, -3.3365$, and the grayscale version is $68.3081, -3.6447, 3.7113$.

A 20% lighter version of the original color is $91.9615, 0.2954, 12.5678$, and $46.3356, 2.0176, 8.2167$ is the 20% darker color. If you saturate the color by 10%, you get $63.7280, 4.9027, 13.9400$, and if you desaturate by 10%, it is $72.1839, -2.1639, 6.4217$.

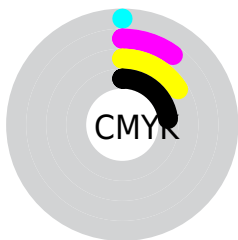
Distribution



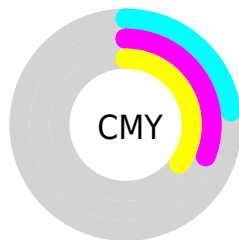
- Red (77%)
- Green (69%)
- Blue (65%)



- Red (77%)
- Yellow (72%)
- Blue (65%)



- Cyan (0%)
- Magenta (10%)
- Yellow (16%)
- Black (23%)



- Cyan (23%)
- Magenta (31%)
- Yellow (35%)

Brightness & Saturation Gradients

These gradients show how the HunterLab color 67.8732, 1.2270, 10.3305 changes by changing the brightness by 10 percent. The first figure shows a shift by +10% for each color and the second figure -10%.

Similar to the brightness gradients but the following saturation gradients show a change of the HunterLab color 67.8732, 1.2270, 10.3305 by changing the saturation by 10% instead.

■ 67.8732, 1.2270,
10.3305

■ 67.8732, 1.2270,
10.3305

192.6367, -3.4692,
20.1402

■ 56.8339, 1.5439,
9.3067

■ 91.8278, 0.4463,
12.4118

■ 46.4666, 1.8098,
8.2880

■ 104.6790, -0.0066,
13.4708

■ 36.8198, 2.0166,
7.2707

118.0794, -0.4982,
14.5439

■ 27.9521, 2.1559,
6.2466

132.0074, -1.0263,
15.6319

■ 19.9390, 2.2157,
5.2022

146.4436, -1.5889,
16.7353

■ 12.8839, 2.1779,
4.1119

161.3707, -2.1846,

■ 6.3049, 3.3589,

17.8543

4.4135

176.7732, -2.8118,
18.9892

0.0000, NaN, NaN

0.0000, NaN, NaN

■ 67.8732, 1.2270,
10.3305

■ 67.8732, 1.2270,
10.3305

■ 63.7280, 4.9027,
13.9400

■ 72.1839, -2.1639,
6.4217

■ 59.7628, 8.8920,
17.1964

■ 76.6392, -5.2891,
2.2527

■ 56.0010, 13.2093,
20.0409

■ 81.2266, -8.1764,
-2.1408

■ 52.4675, 17.8587,
22.4049

■ 85.9339, -10.8499,
-6.7303

■ 49.1901, 22.8236,

■ 90.4045, -15.2654,

24.2144

-6.6070

■ 46.1986, 28.0561,
25.3974

■ 94.6034, -21.6292,
-1.3772

■ 43.5235, 33.4641,
25.8996

■ 95.1895, -22.4980,
-0.6662

■ 41.1923, 38.8979,
25.7162

■ 40.3009, 41.1407,
25.5535

Harmonies

Analogous

The Analogous color harmony consists of three colors that are next to each other on the color wheel.



67.8747, 4.3771, 7.3762



67.8732, 1.2270, 10.3305



67.8747, -3.1629, 11.5171

Triad

The Triadic color harmony groups three colors that are evenly spaced from another and form a triangle on the color wheel.



67.8747, 1.2250, 10.3315



67.8747, -12.1723, 4.1323



67.8747, 0.4048, -4.1774

Complementary

The Complementary color scheme is a pair of colors which are on the opposite of each other on the color wheel.



67.8732, 1.2270, 10.3305



68.7422, -7.7013, -3.3365

Split Complementary

Split-complementary colors differ from the complementary color scheme. The scheme consists of three colors, the original color and two neighbors of the complement color.



67.8747, -4.0864, -5.1862



67.8732, 1.2270, 10.3305



67.8747, -11.2733, -0.2056

Square

The Square scheme is like the rectangle color scheme, but the four colors are evenly spaced on the color wheel.



67.8747, 1.2250, 10.3315



67.8747, -10.8317, 8.0895



67.8747, -8.3430, -3.6886



67.8747, 3.8949, -1.0153

Rectangle

The Rectangle color scheme consists of four colors that form a rectangle on the color wheel.



67.8732, 1.2270, 10.3305



67.8747, -6.1711, 11.2067



67.8747, -8.3430, -3.6886



67.8747, -1.0413, -4.7883

Sweetspot

The Sweet Spot groups the original color and five complimentary colors.



67.8747, 1.2250, 10.3315



96.9898, -3.1820, 8.2366



65.3413, 10.0635, -1.7893



44.6780, -1.3288, 3.9897

0.0000, NaN, NaN



46.2646, -2.4686, 2.5136

Same Dimension

The Same Dimension uses a secret algorithm to generate beautiful new colors.



67.8747, 1.2250, 10.3315



88.8363, 3.3435, 15.5932



72.4411, -6.4367, 14.9977



33.5302, -0.4551, 3.7437



32.9039, 32.7683, 20.8489



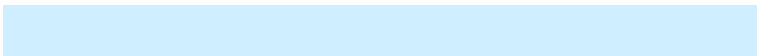
8.0575, 4.8825, 5.0505

Inverse Universe

The Inverse Universe completely reimagines the original color for something new.



68.7422, -7.7013, -3.3365



90.2522, -11.2416, -6.7351



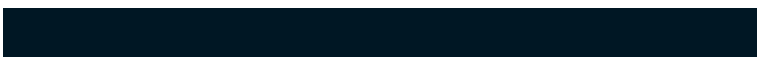
64.1347, -0.0687, -9.3152



33.7780, -3.0021, -0.1573



35.7909, -4.2428, -35.5765



8.5991, -2.1615, -6.0822

Previews

White Background



This preview shows how the HunterLab color 67.8732, 1.2270, 10.3305 looks on a white background.

Color Contrast Check

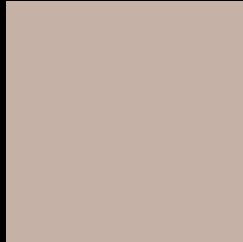
Large Text (above 18pt) WCAG AA × Fail

Any Text WCAG AA × Fail

Large Text (above 18pt) WCAG AAA × Fail

Any Text WCAG AAA × Fail

Black Background



This preview shows how the HunterLab color 67.8732, 1.2270, 10.3305 looks on a black background.

Color Contrast Check

Large Text (above 18pt) WCAG AA ✓ Pass

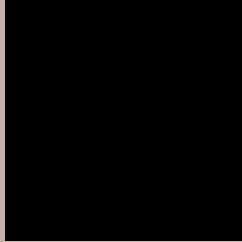
Any Text WCAG AA ✓ Pass

Large Text (above 18pt) WCAG AAA ✓ Pass

Any Text WCAG AAA ✓ Pass

If you want to check with other color combinations, try the [Color Contrast Checker](#).

HunterLab 67.8732, 1.2270, 10.3305 Background



This preview shows how black text looks on a background with the HunterLab color 67.8732, 1.2270, 10.3305.



This preview shows how white text looks on a background with the HunterLab color 67.8732, 1.2270,

Color Blindness Simulation

Color vision deficiency is a very complex topic, and I could not describe the different causes any better than Wikipedia does, so if you want to learn more, you should check out their [article about color blindness](#).

Dichromacy



Original Color

67.8732, 1.2270, 10.3305

Protanopia

67.8487, -3.2864, 9.3778

Deuteranopia

68.0077, 4.6487, 10.5356



Tritanopia

67.9259, 7.0702, 0.9429

Trichromacy



Original Color

67.8732, 1.2270, 10.3305

Protanomaly

67.9018, -1.6339, 9.8897

Deuteranomaly

67.9863, 3.0997, 10.4853

Tritanomaly

67.8651, 4.9085, 4.6450

Monochromacy



Original Color

67.8732, 1.2270, 10.3305

Achromatopsia

68.3947, -3.6494, 3.7160

Achromatomaly

68.0749, -2.0505, 6.1378

CSS Examples

Text

The CSS property to change the color of the text to HunterLab 67.8732, 1.2270, 10.3305 is called "color". The color property can be set on classes, ids or directly on the HTML element.

This example shows how text in the color `rgb(197, 177, 166)` looks like.

```
.text, #text, p{  
    color:rgb(197, 177, 166)  
}
```

If you want to add a text shadow in that color use the text-shadow property, you can generate a text shadow directly with our [CSS Text Shadow Generator](#).

Here you see how black text with a 4 pixel rgb(197, 177, 166) colored shadow looks like.

```
.shadow{ text-shadow: 4px 4px 2px rgb(197, 177, 166) }
```

Border

The CSS property to change the border of an element to HunterLab 67.8732, 1.2270, 10.3305 is called "border". The border property can be set on classes, ids or directly on the HTML element.

This example shows the color as border, it can be applied via the CSS property "border" or "border-color".

```
.border, #border, table{ border:4px solid rgb(197, 177, 166) }
```


If only the border color should be changed use the property `border-color`.

```
.border{ border-color:rgb(197, 177, 166) }
```

If you want to add a box shadow in that color use:

Here you see how a box with a 4 pixel `rgb(197, 177, 166)` colored shadow looks like.

```
.boxshadow{ -moz-box-shadow:4px 4px 4px  
4px rgb(197, 177, 166); -webkit-box-  
shadow:4px 4px 4px 4px rgb(197, 177, 166);  
box-shadow:4px 4px 4px 4px rgb(197, 177,  
166) }
```

Background

The CSS property to change the background color of an element to HunterLab 67.8732, 1.2270, 10.3305 is called "background". The background property can be set on classes, ids or directly on the HTML element.

```
.background, #background, body{  
background: rgb(197, 177, 166) }
```

If only the background color should be changed can be used:

```
.background{ background-color: rgb(197,  
177, 166) }
```

This example shows the color as background, it is applied via the CSS property "background".

To optimize and compress your CSS code, you can use our [online CSS compressor and optimizer](#) based on csstidy. If you want to create a linear or radial gradient as background or border, check our [CSS Gradient Generator](#).

Hey! You found this booklet interesting? Support Converting Colors with the new Membership Option!

The pro membership hides all ads, plus gives you double the colors in the color bucket, and more awesome pro features!

[Learn more, Memberships starting at \\$2.50/m!](#)

**Follow me
on Twitter!**

@ConvertingColor